



Penn Avenue Streetscape Phase II Artist Enhancements

Final Design Presentation

**Artists atiya jones and Marlana Adele Vassar with
City of Pittsburgh / DOMI, Trans Associates, LBA Landscape Architecture,
and Shiftworks Community + Public Arts**

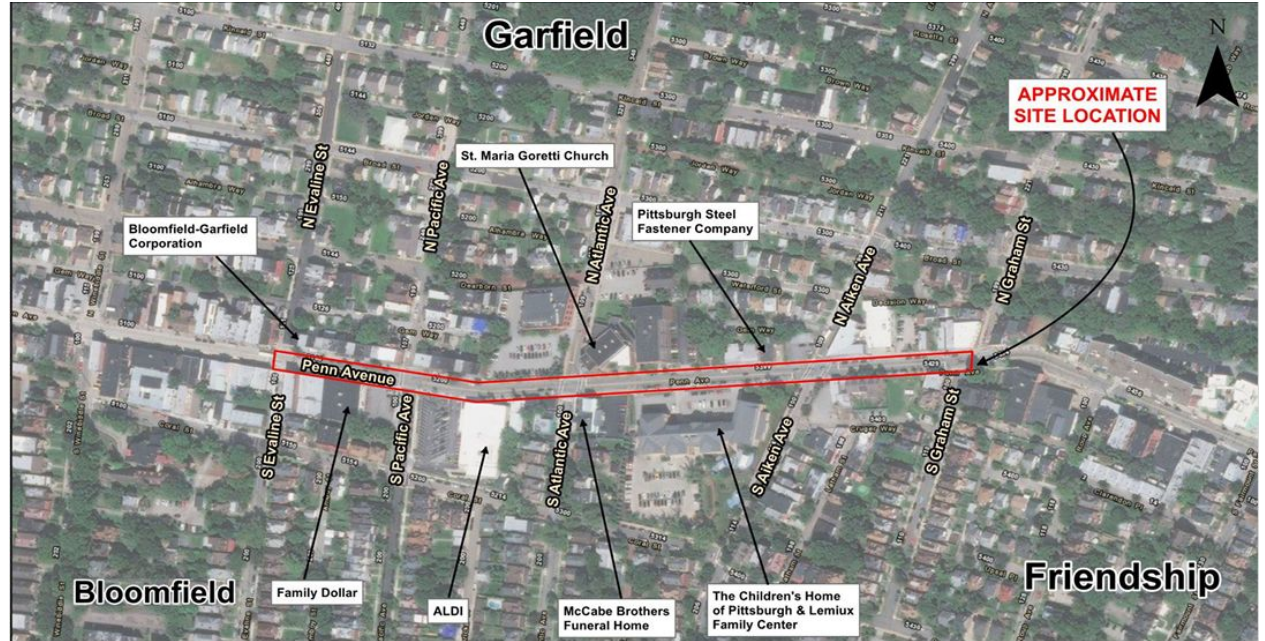
Penn Avenue Phase II Overview



Penn Avenue Phase II, which follows Phase I (Evaline Street to Graham Street), will consist of full-depth reconstruction of all street infrastructure in the project area, including the street, curb sidewalk, ADA ramps, and traffic signals, as well as other mobility and safety improvements

Penn Avenue Phase II Site

The project site for Penn Avenue Phase II will span the length of Penn Avenue between Evaline Street and Graham Street



Penn Avenue Phase II Project Team

- Department of Mobility and Infrastructure (DOMI), City of Pittsburgh
- Trans Associates, Engineers
- LBA, Landscape Architecture
- Shiftworks Community + Public Arts, Public Art Consultants

Penn Avenue Phase II Project Team

Shiftworks Community + Public Arts was engaged by Trans Associates Engineering, the project's lead contractor hired by DOMI, to develop public art recommendations, facilitate artist selection, and provide project management for the design and implementation of integrated artwork.

These artist-designed elements are intended to enhance the streetscape experience for residents, property owners, and visitors to the Penn Avenue corridor.

Penn Avenue Artist Community Worksession



In January 2023, Shiftworks hosted a listening session with artists and Penn Ave arts leaders to identify potential artwork integration opportunities for Phase II construction, and to gain a better understanding of the needs of the community and lessons learned from Phase I construction

Three Themes to What We Heard from the Community about Streetscape Design

1. Enhance the identity as the Penn Avenue Arts District
2. Activate the streets to better serve the community and role as an arts district
3. Increase pedestrian safety

Artist Opportunity Details

Opportunity 1: Design of Custom Tree Grates

Selected Artist: atiya jones

Opportunity Scope: Tree grate design to be fabricated and installed at designated tree pits along Penn Ave Phase II

Artist Fee (design + project management only): \$7,500

Opportunity 2: Design of Pedestrian Spaces

Selected Artist: Marlana Adele Vassar

Opportunity Scope: Design of streetscape amenities including surface treatment for concrete benches, bus shelter wraps, and bike racks.

Artist Fee (design + project management only): \$30,000



Artist Selection

Pittsburgh Creative Corps Artist Directory

The Pittsburgh Creative Corps is a group of pre-qualified artists whose work has been reviewed by a panel of artists, art and design professionals, and community stakeholders. The Pittsburgh Creative Corps supports the rapid deployment of the Corps and their creative practices to respond to various public art and artist-led programming opportunities throughout the greater Pittsburgh region.



The Pittsburgh Creative Corps is open to artists throughout Southwestern Pennsylvania.

Artist opportunities were released to members of the [Pittsburgh Creative Corps](#), a roster of pre-qualified artists living in Southwestern Pennsylvania who have expressed a desire to work on projects in the public realm.

Artists were selected by a panel of representatives from the City of Pittsburgh, Trans Associates, LBA Landscape Architecture, as well as artist and community representatives from Bloomfield and Garfield neighborhoods.

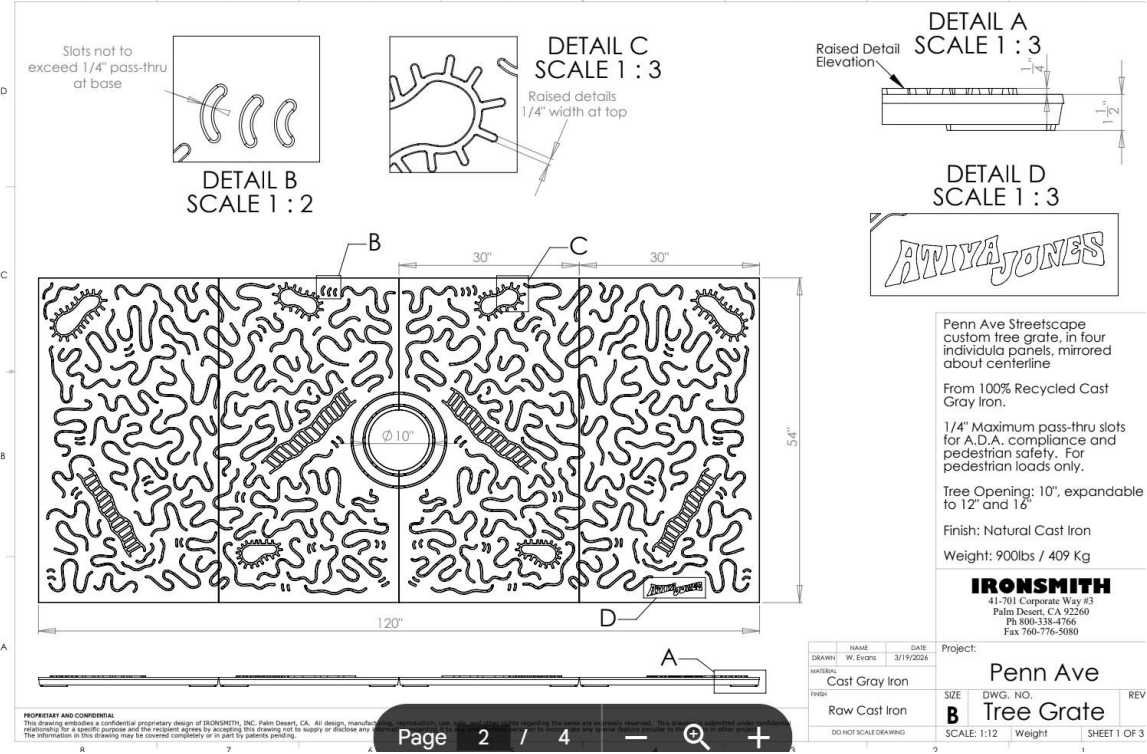
Project Timeline

- **Artists selected:** February 2024
- **Artist design development:** March-October 2024
- **Interim design review meeting with project team:** May 2024
- **Art Commission Preliminary Review:** November 2024
- **Designs incorporated into Bid Package:** May 2025
- **Shop Drawings + Refinement Process:** Winter 2026
- **Development Activities Meeting:** April 2026
- **Art Commission Hearing + Action:** May 2026
- **Final Designs submitted for fabrication:** May 2026
- **Installation:** 2027

Project Outreach to Date

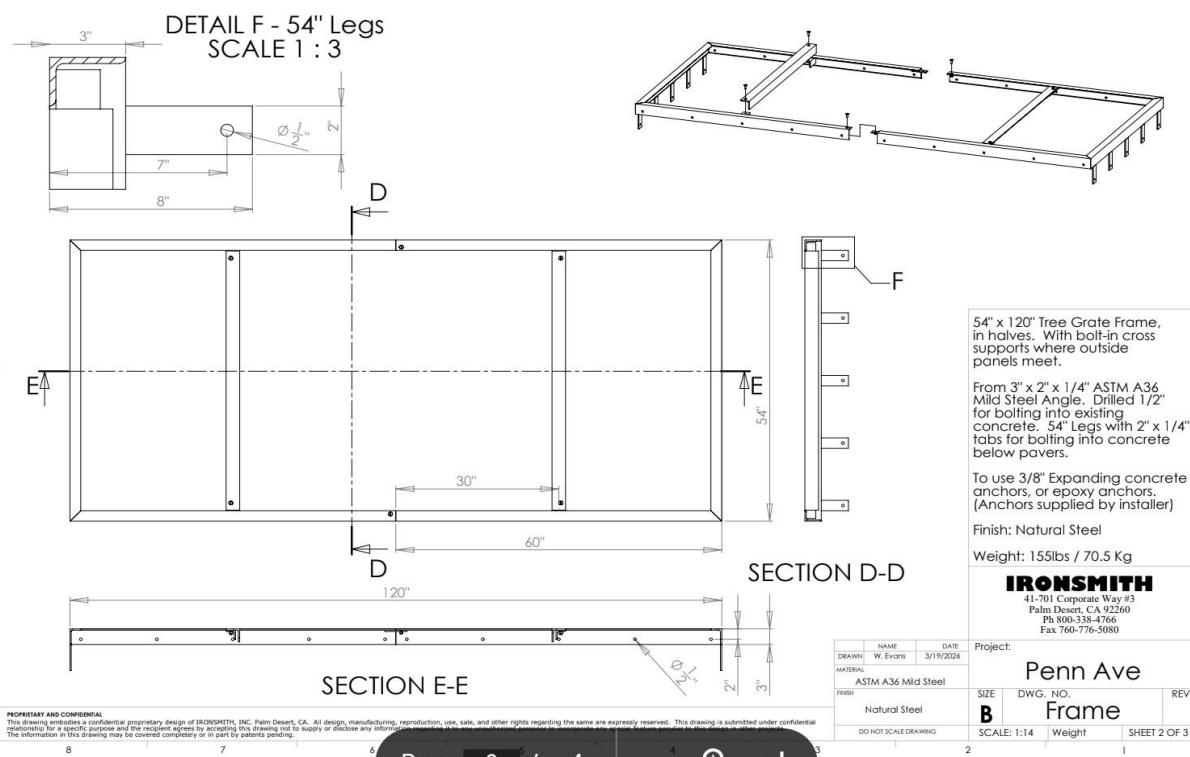
- **Penn Avenue Artist Listening Session:** January 2023
- **Presentation of Artwork Recommendations at public meeting:** February 2023
- **Presentation of Artwork Recommendations to Bloomfield Garfield Corporation:** February 2023
- **Pedestrian Spaces community design session during Unblurred:** April 2024
- **Pedestrian Spaces community design session during Unblurred:** May 2024
- **Pedestrian Spaces and Tree Grate design unveiling during Unblurred:** September 2024
- **Streetscape Final Design public meeting:** November 2024

Opportunity 1: Design of Custom Tree Grates



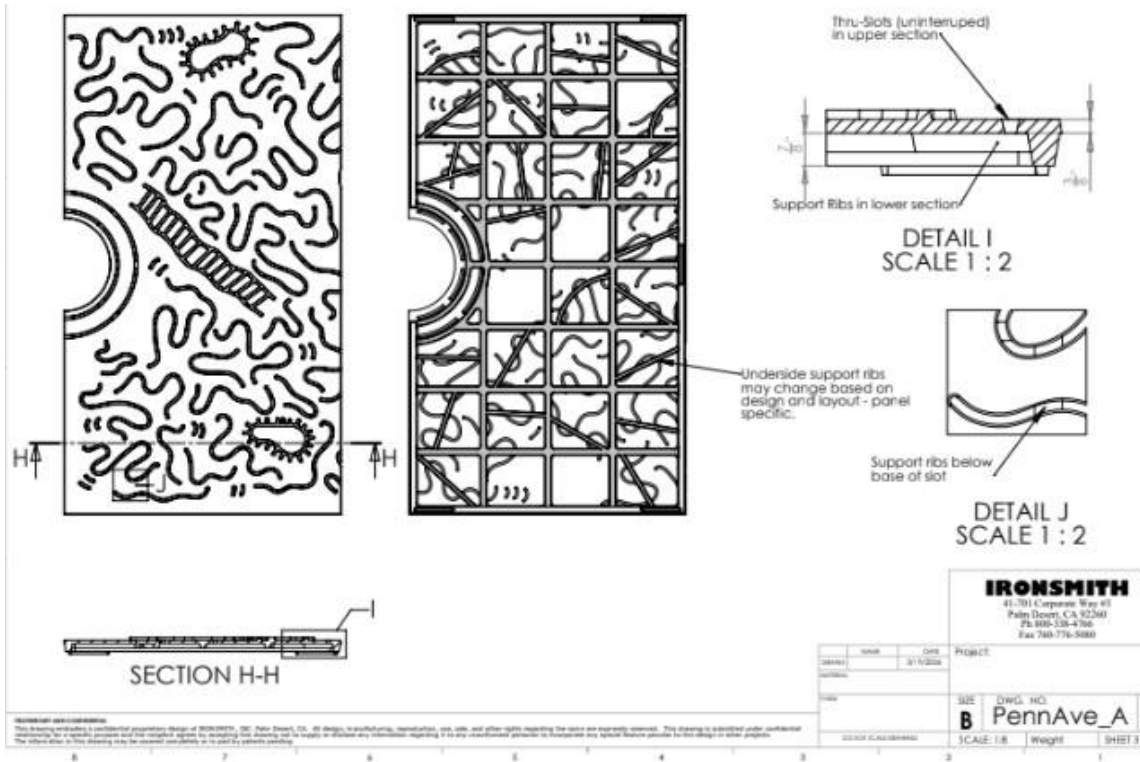
Note: Center breakaway rings allow City Forestry to remove rings as tree caliper grows.

Opportunity 1: Design of Custom Tree Grates

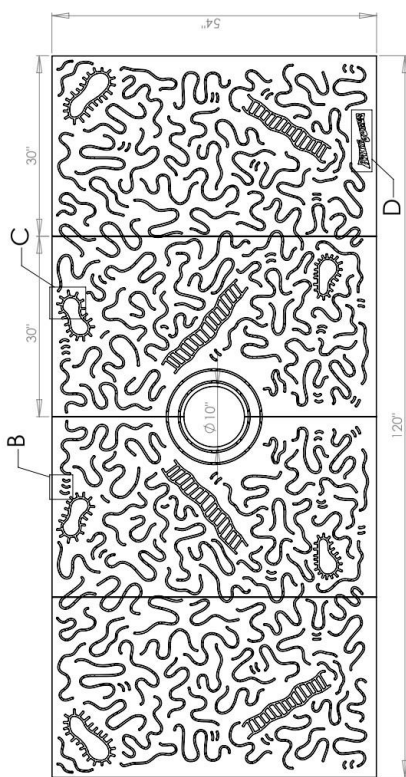


PROPRIETARY AND CONFIDENTIAL
This drawing contains a confidential proprietary design of IRONSMITH, INC. Palm Desert, CA. All design, manufacturing, reproduction, use, sale, and other rights regarding the same are expressly reserved. This drawing is submitted under confidential relationship for a specific purpose and the recipient agrees by accepting this drawing not to supply or disclose any information contained herein to any third party without the prior written consent of IRONSMITH, INC. The information in this drawing may be covered completely or in part by patent pending.

Opportunity 1: Design of Custom Tree Grates



Opportunity 1: Design of Custom Tree Grates



atiya jones, artist

atiya jones artist statement:

"In approaching the tree grate design, I wanted to incorporate abstracted elements of whimsy, beginning with the wandering lines of my Brain Maps. The lines search for one another, seeking connection; share commonalities (but are each unique); and come together to create a bigger picture—just as the members of our community do.

Other aspects of the design include symbols that are commonly found in my work: Connected lines mimic railroad tracks, city steps and ladders found at the swimming pools, or those of worksites. The soft oblong shapes might bring to mind portals, sunshine, or biological structures found within our own bodies."

Opportunity 2: Design of Pedestrian Spaces

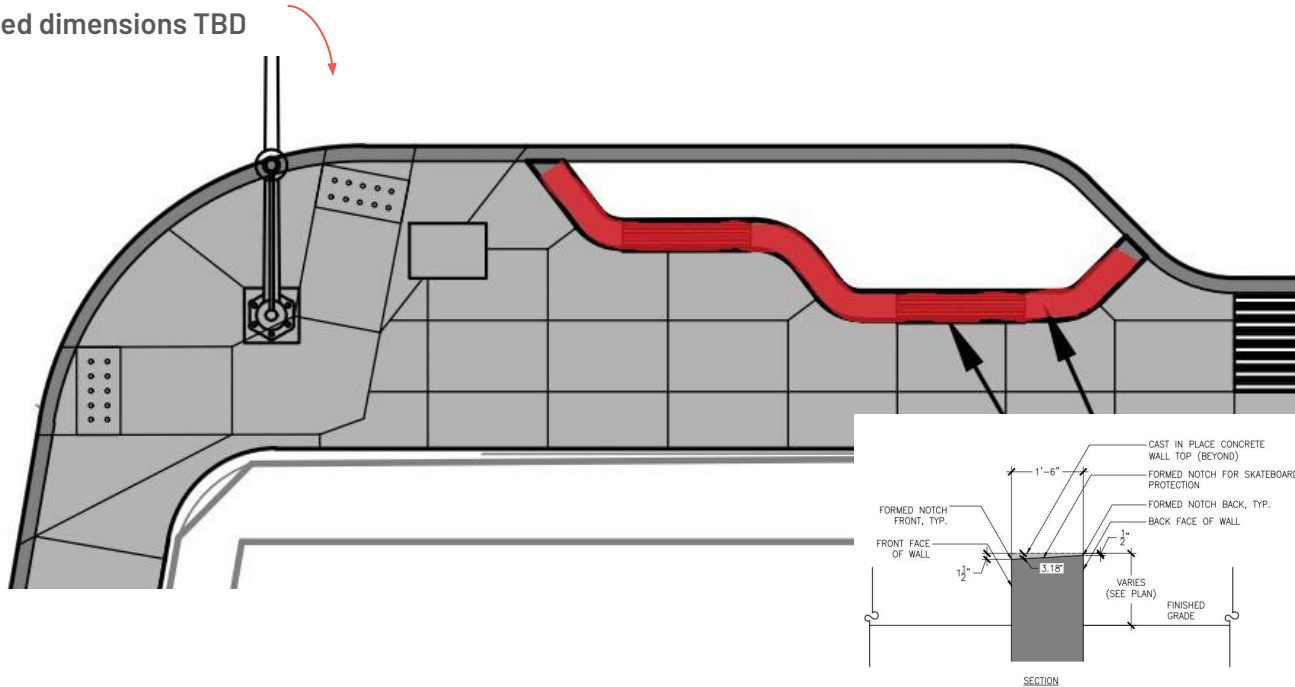
The project team identified three elements within the pedestrian spaces for which Marlana Adele Vassar was chosen to design:

- Concrete Formwork Benches
- Bike Racks
- Bus Shelter Wrap

A fourth element - paving in crosswalks - was eliminated due to concerns for maintenance and roadway safety.

Pedestrian Spaces: Concrete Formwork Benches

Aerial view of the bench.
Finalized dimensions TBD



Concrete benches will be installed at the intersection bump outs. It is anticipated there will be eight total benches—two per intersection, with one on either side of Penn Ave.

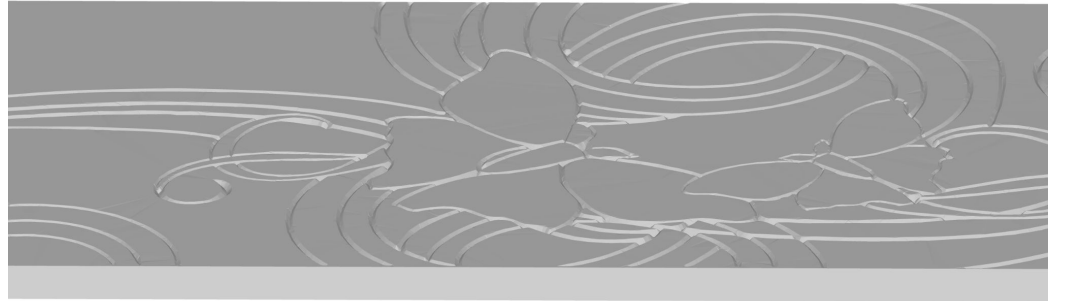
The formwork design will be imprinted using concrete molds, which will provide a textured surface on the face of the benches.

Pedestrian Spaces: Concrete Formwork Benches

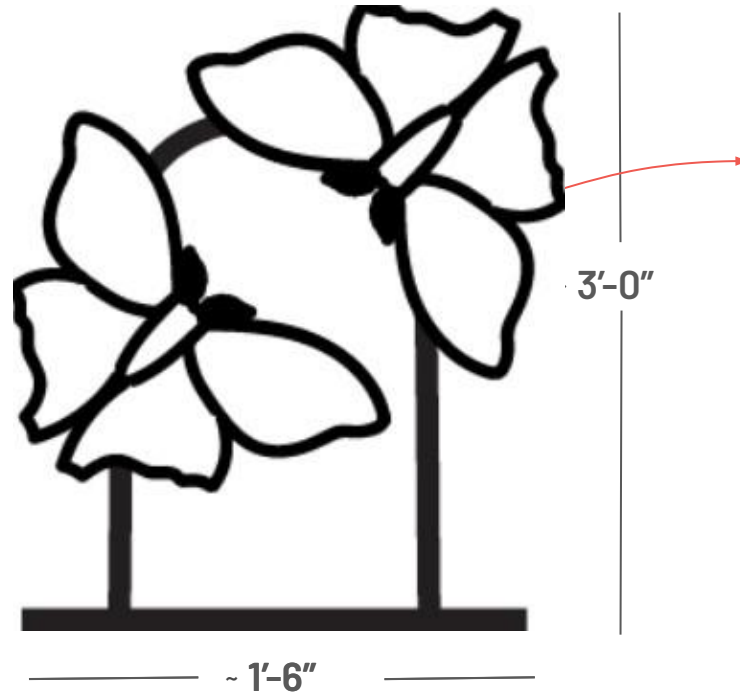


Aerial view of the bench.
Finalized dimensions TBD

3D rendering detail
showing depth of
imprinted grooved lines



Pedestrian Spaces: Bike Racks



Black areas represent positive space. Whites areas are negative space.

Total number of bike racks are TBD

Pedestrian Spaces: Bus Shelter Wrap



Design will be applied to the back panels of the bus shelters as a vinyl wrap. Side panels will remain usable advertising space.

Opportunity 2: Design of Pedestrian Spaces

Marlana Adele Vassar Artist Statement:

"For the Streetscape project, we held several feedback sessions and events to develop a theme for the artwork and determine what was most important to the community.

Many respondents wanted to see natural elements connected throughout the designs and have artwork promoting a sense of inclusion and unity. I created many designs and allowed respondents to rate ideas for the bike racks, concrete bench planters, stamped asphalt, and bus station graphics. Then I chose all of the highest-rated designs that also matched as a set of four.

The chosen designs use butterflies as a central, unifying symbol, representing transformation, hope, freedom and joy, which are values that are important to our growing community."