



## A. PROJECT INFORMATION

### 1. ZONING DEVELOPMENT REVIEW CASE INFORMATION

Application is: ☒ Development Project ☐ Protest Appeal

BDA Case Number: BDA-2025-05757

Project Description: Install 145.5 sf wall sign at front of existing one (1) story building

Case Review Date: June 2025

### 2. SITE INFORMATION

Development Address: 2103 Noblestown Rd

Parcel (s): 39-D-165

Zoning Designation: UNC

Neighborhood: Westwood

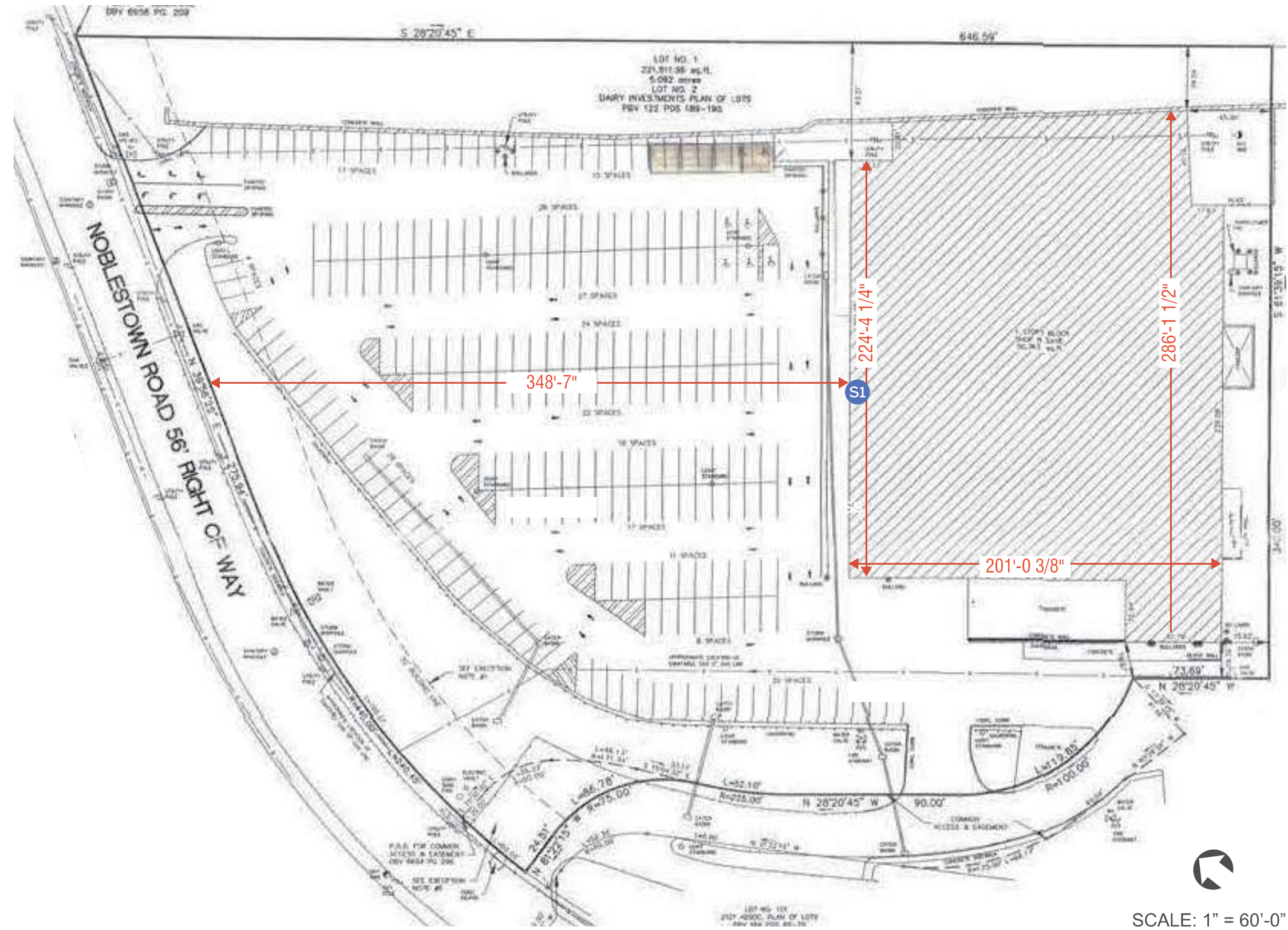
Registered Community Organization: NA

Date of Development Activities Meeting: NA

## B. ZBA REQUESTS

Type of Request: Variance Code Section: [919.03M.5\(a\)](#)

Description: A maximum 80 sf wall sign is permitted, 145.5 sf wall sign is requested.



SIGN ID	DESCRIPTION	QTY
S1	60" GIANT EAGLE CHANNEL LETTERS	1

These drawings are not for construction purposes. The information contained herein is intended to express design intent only. This original design is the sole property of Blair Image Elements. It cannot be reproduced, copied or exhibited, in whole or in part, without first obtaining written consent from Blair Image Elements.

# BRANDBOOK CHECKLIST

# BRANDBOOK

CLIENT: Giant Eagle  
LOCATION: 2103 Noblestown Rd  
Pittsburgh, PA 15205  
STORE #: 0006  
DATE: 04/30/25  
VARIANCE: YES

## TABLE OF CONTENTS

PAGE 1 - Cover Checklist  
PAGE 2 - Cover  
PAGE 3 - Program Color Specifications  
PAGE 4 - Exterior Signage Site Plan  
PAGE 5 - Exterior Signage Site Plan  
PAGE 6 - S1 Existing / Proposed  
PAGE 7 - S1 Detail  
PAGE 8 - Existing Signs  
PAGE 9 - Code Check  
PAGE 10 - Code Of Conduct / Safety Criteria

## CONTACTS

PgM: Tom Glunt  
Email: tglunt@blairimage.com  
Phone: (814) 283-2040  
  
PjM: Justin Kensinger  
Email: jkensinger@blairimage.com  
Phone: (814) 283-2045

## DOCUMENT INFO

BLAIR PROJECT #: 124628  
SALES ORDER # 97413  
DOC #: AD-GNE-124628-250430-1

## REVISIONS

REV	DATE	DESCRIPTION
0	04/30/25	INITIAL RELEASE
1	06/02/25	REVISED PER COMMENTS



### DESIGNER CHECK

(initials)

RSF

RSF

RSF

RSF

RSF

RSF

RSF

RSF

### DATE CHECKED

06/02/25

### PjM CHECK

(initials)

JK

JK

JK

JK

JK

JK

JK

JK

### DATE CHECKED

06/03/25

### 1. INFORMATION ACCURACY

- a) Client Name
- b) Site Address / Location
- c) Project and Sales Order Number
- d) Date and Rendering Revisions w/ Revision Note(s)
- e) Required Item Notes or N/A

### 2. BRANDING ELEMENTS

- a) Brand Standard document number and revision or N/A
- b) Branding Elements and / or services meet current revision of Brand Standard identified
- c) Branding Elements and descriptions contained in Rendering match Branding Elements and descriptions in Proposal / Quote

CUSTOMER APPROVAL

☐ Approved☐ Approved as Noted☐ Not Approved  
Resubmit with Changes

Print Name

Title

Signature

Date



giant eagle

BRAND STANDARD  
REVISION DATE:

10/30/2024

☒ All provided image elements and / or services meet the current brand revision.

☐ The following image elements and / or services do not meet the current brand standard due to municipal code and / or specific site conditions. \_\_\_\_\_

BRANDBOOK

CLIENT: Giant Eagle

LOCATION: 2103 Noblestown Rd  
Pittsburgh, PA 15205

STORE #: 0006

DATE: 04/30/25

VARIANCE: YES

TABLE OF CONTENTS

PAGE 1	- Cover Checklist
PAGE 2	- Cover
PAGE 3	- Program Color Specifications
PAGE 4	- Exterior Signage Site Plan
PAGE 5	- Exterior Signage Site Plan
PAGE 6	- S1 Existing / Proposed
PAGE 7	- S1 Detail
PAGE 8	- Existing Signs
PAGE 9	- Code Check
PAGE 10	- Code Of Conduct / Safety Criteria

CONTACTS

PgM: Tom Glunt

Email: tglunt@blairimage.com

Phone: (814) 283-2040

PjM: Justin Kensinger

Email: jkensinger@blairimage.com

Phone: (814) 283-2045

DOCUMENT INFO

BLAIR PROJECT #: 124628









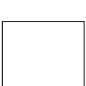

SALES ORDER # 97413

DOC #: AD-GNE-124628-250430-1

REVISIONS

REV	DATE	DESCRIPTION
0	04/30/25	INITIAL RELEASE
1	06/02/25	REVISED PER COMMENTS

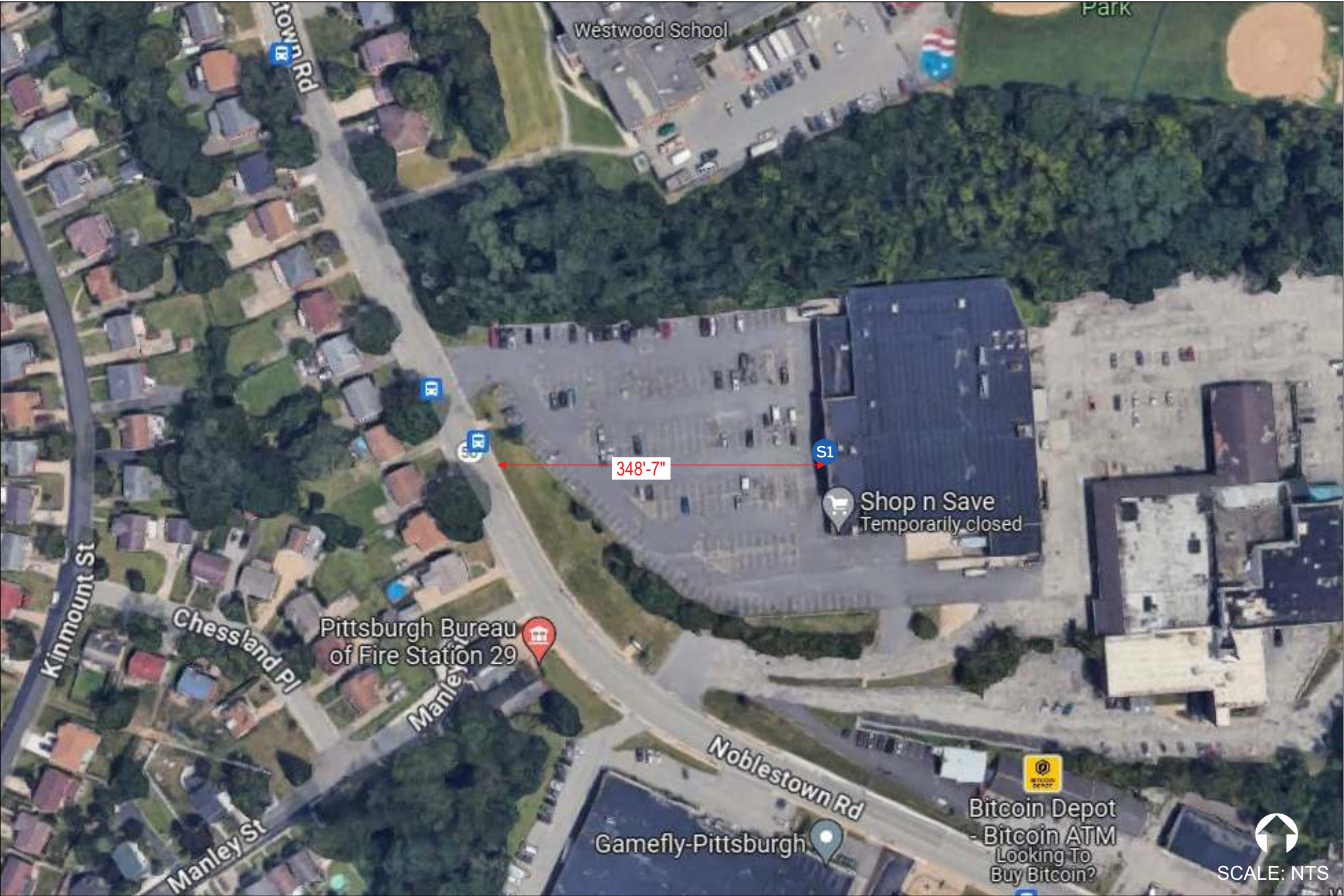


COLOR SPECIFICATIONS	
	PMS 186C RED 3M 3630-73 DARK RED ARLON DARK RED #73
	PMS 377C GREEN
	PMS 390C GREEN
	PANTONE 430C GREY
	PANTONE 877C GREY
	PANTONE 356C 3M 3630-76 HOLLY GREEN ARLON GREEN #76
	PANTONE 7496C
	PANTONE 448C 3M 3630-69 DURANODIC OPAQUE ARLON OPAQUE DURANDOIC #69
	WHITE 3M 3630-20 WHITE ARLON WHITE #20
	BLACK 3M 180C-12 BLACK OPAQUE ARLON OPAQUE BLACK #03



These drawings are not for construction purposes. The information contained herein is intended to express design intent only. This original design is the sole property of Blair Image Elements. It cannot be reproduced, copied or exhibited, in whole or in part, without first obtaining written consent from Blair Image Elements.

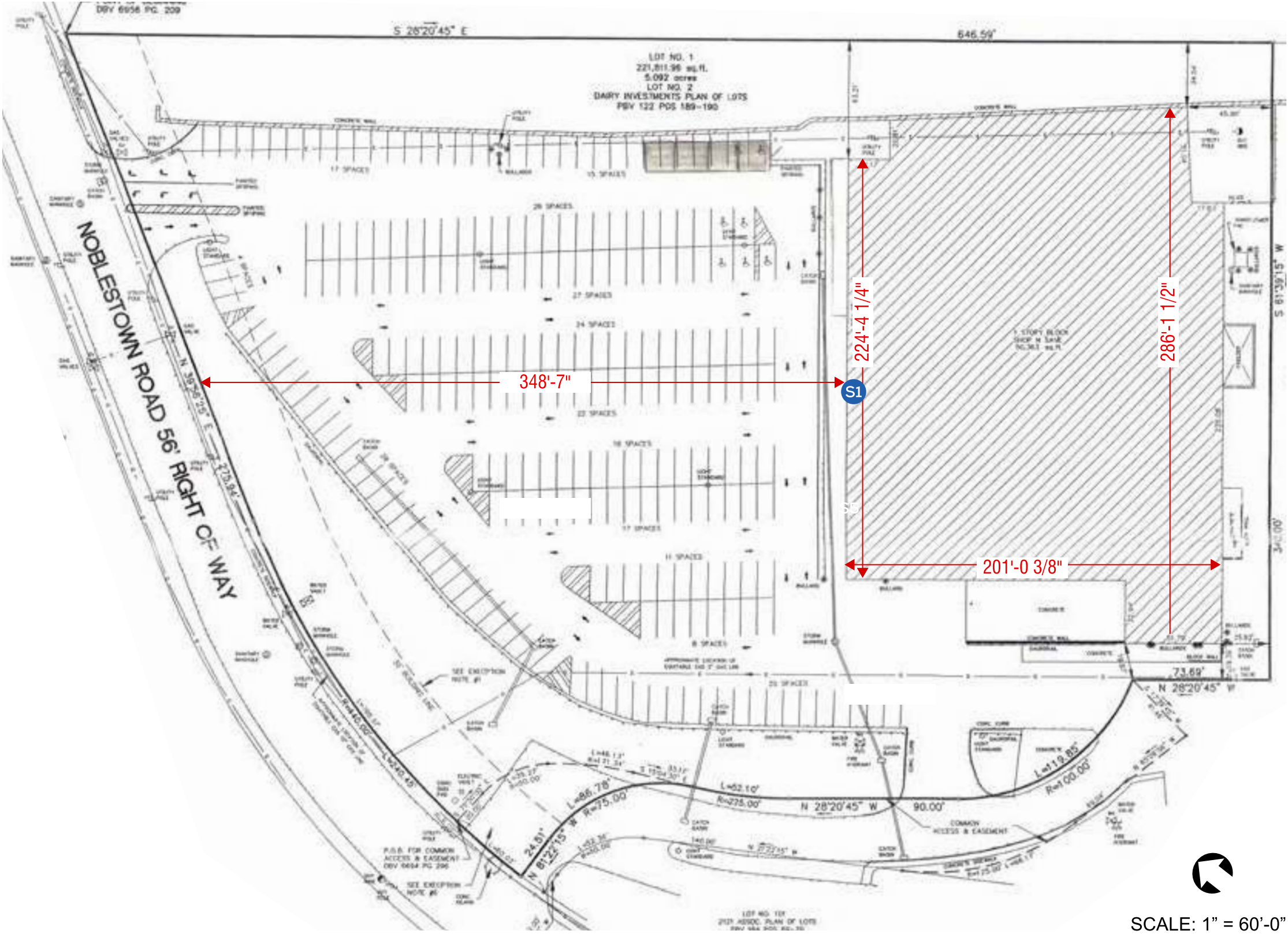




SIGN ID	DESCRIPTION	QTY
S1	60" GIANT EAGLE CHANNEL LETTERS	1

These drawings are not for construction purposes. The information contained herein is intended to express design intent only. This original design is the sole property of Blair Image Elements. It cannot be reproduced, copied or exhibited, in whole or in part, without first obtaining written consent from Blair Image Elements.



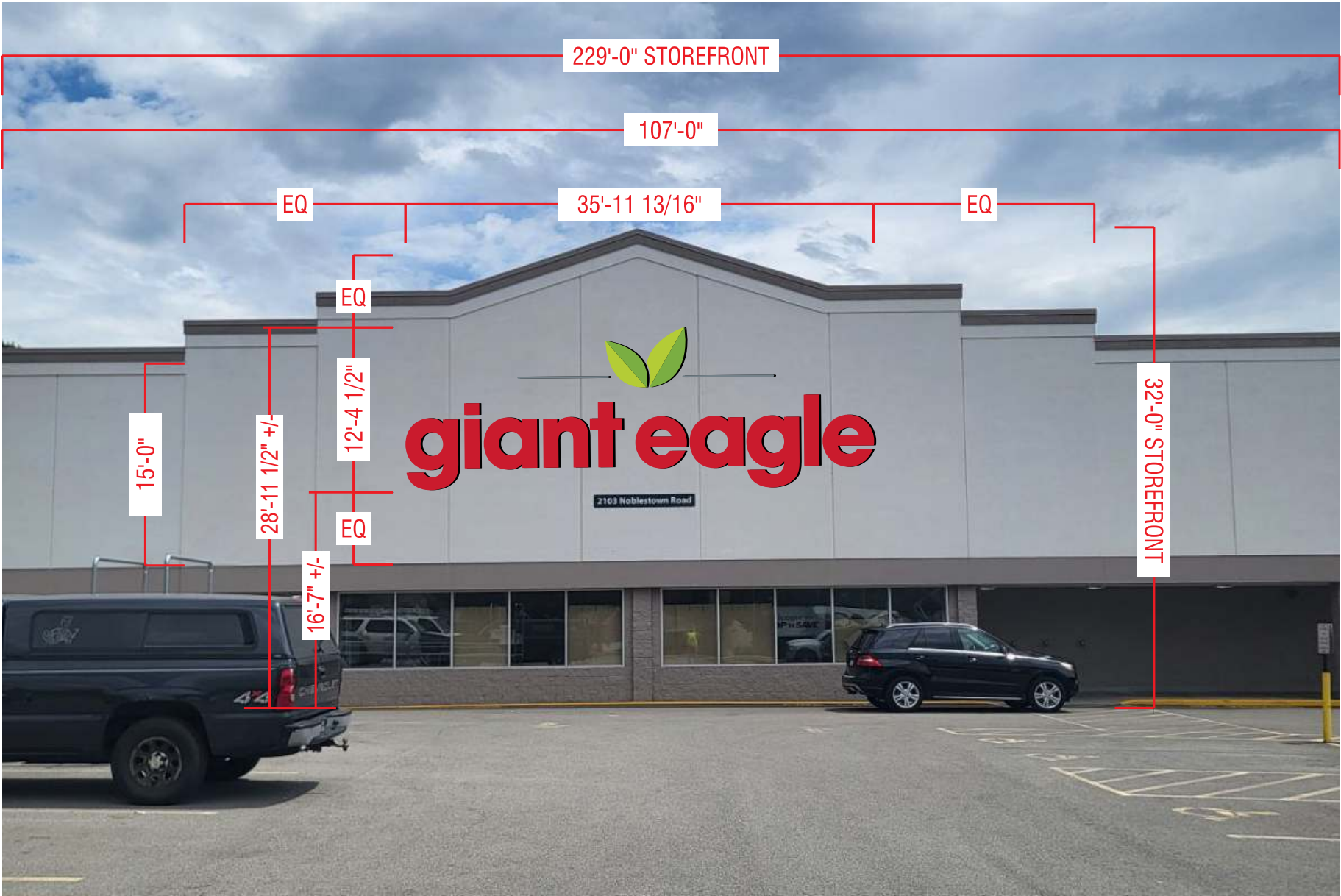


SIGN ID	DESCRIPTION	QTY
S1	60" GIANT EAGLE CHANNEL LETTERS	1

These drawings are not for construction purposes. The information contained herein is intended to express design intent only. This original design is the sole property of Blair Image Elements. It cannot be reproduced, copied or exhibited, in whole or in part, without first obtaining written consent from Blair Image Elements.

SCOPE OF WORK

- 1. REMOVE EXISTING GIANT EAGLE LETTERS.
- 2. CLEAN SURFACE AND REPAIR ANY HOLES WITH STUCCO PATCH, PAINT TO MATCH.
- 3. VERIFY THE PLACEMENT OF ALL LETTERS TO THE PROVIDED PATTERN. ENSURE THAT THE MOUNTING HOLES AND ELECTRICAL HOLES MATCH THE PROVIDED PATTERN.
- 4. SET THE PATTERN ON THE SUBSTRATE FOLLOWING DIMENSIONS SPECIFIED IN THE ELEVATION DRAWINGS. IF NONE ARE PROVIDED, CONTACT BIE PM.
- 5. ENSURE PLACEMENT IS PLUMB/LEVEL.
- 6. INSTALL THE [INSERT SIZE] CHANNEL LETTERS PER THE INSTALLATION DRAWINGS PROVIDED BY BIE. THESE DRAWINGS COULD INCLUDE SEALED ENGINEERING DRAWINGS WITH [INSERT TEXT] ATTACHMENT METHODS.
- 7. IF THE LETTERS ARE INSTALLED FLUSH AGAINST THE WALL, APPLY AN APPROVED BUILDING SEALANT ALONG THE ENTIRE TOP OF EACH LETTER WHERE IT MEETS WALL.
- 8. CONNECT TO EXISTING POWER WITHIN 6FT. NEW POWER TO BE PROVIDED ON SITE.
- 9. POWER SUPPLY ENCLOSURES ARE INSTALLED ON THE INTERIOR SIDE OF THE WALL UNLESS LETTERS ARE SELF-CONTAINED. ENCLOSURES MUST BE ATTACHED TO THE STRUCTURE AND PROPER ELECTRICAL CONNECTORS MUST BE USED. PRIMARY VOLTAGE AND SECONDARY VOLTAGE MUST USE PROPER CONNECTORS TO SECURE THEM.



PROPOSED SIGNAGE



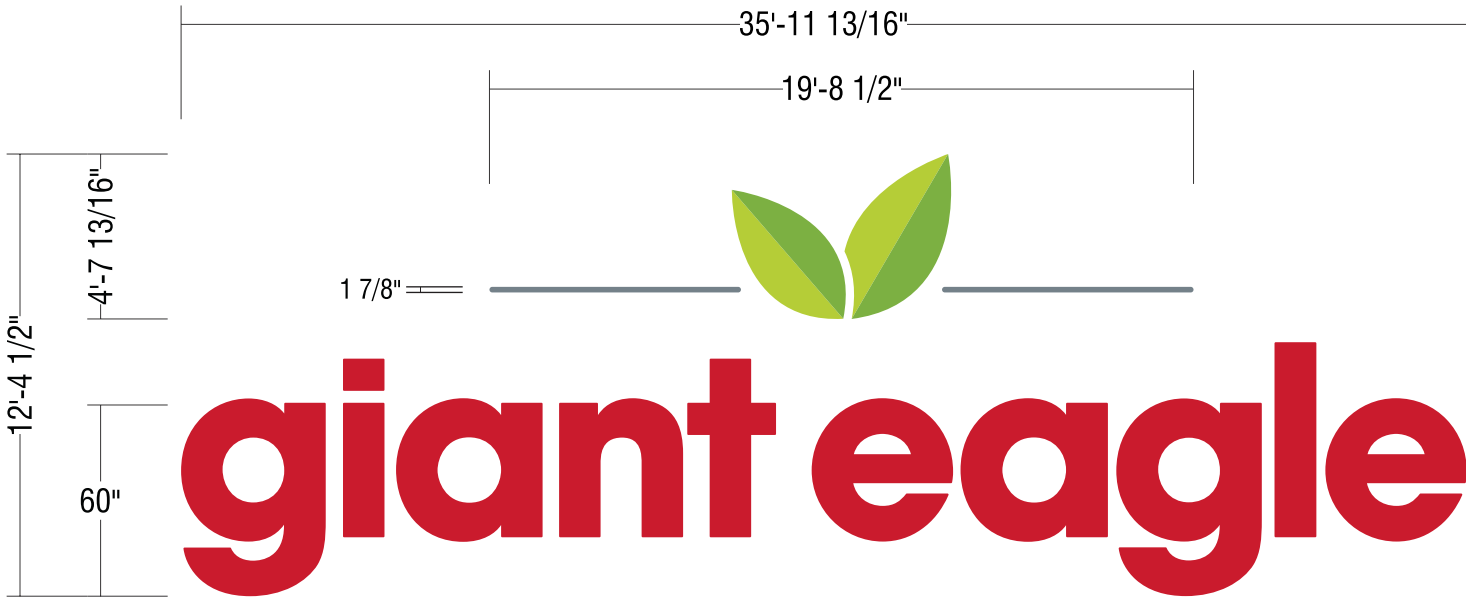
EXISTING SIGNAGE

These drawings are not for construction purposes. The information contained herein is intended to express design intent only. This original design is the sole property of Blair Image Elements. It cannot be reproduced, copied or exhibited, in whole or in part, without first obtaining written consent from Blair Image Elements.



BLAIR ITEM #

GNELA00390



FRONT ELEVATION

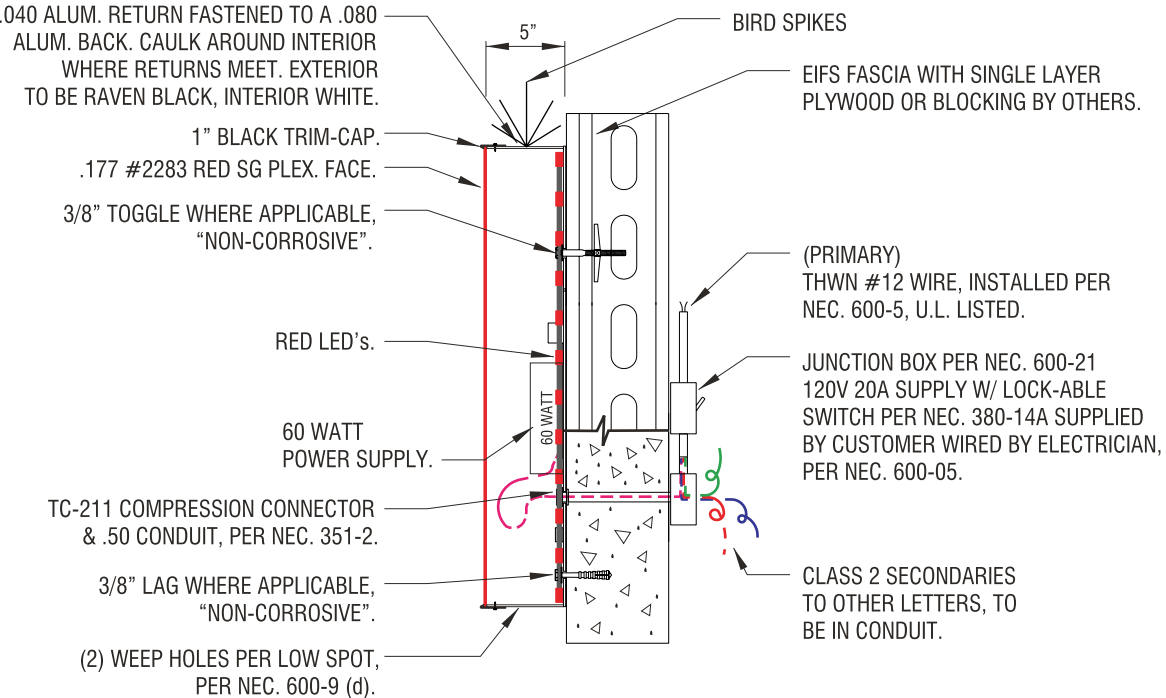
SCALE: NTS

Square Footage for "Leaf & Rule Line" - 17.06

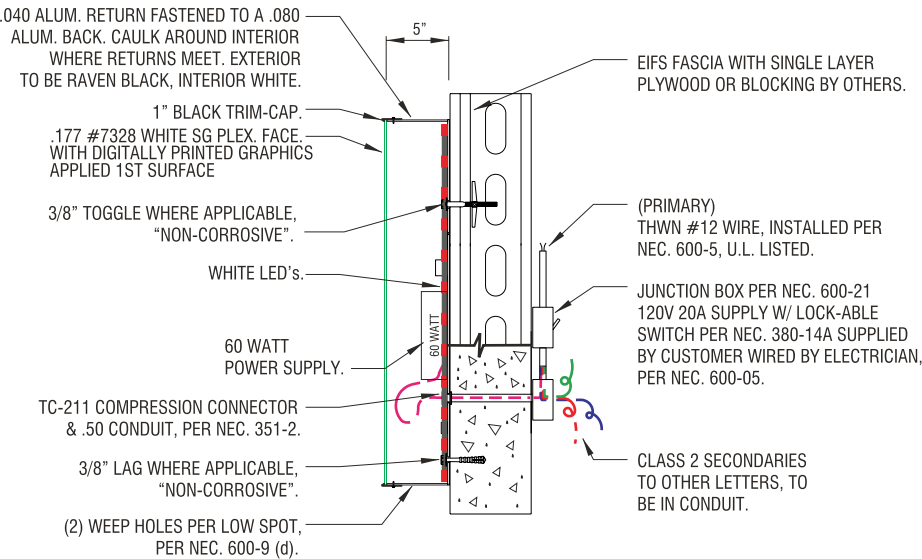
Square Footage for "Giant Eagle" - 127.9

Total Square Footage - 145.5

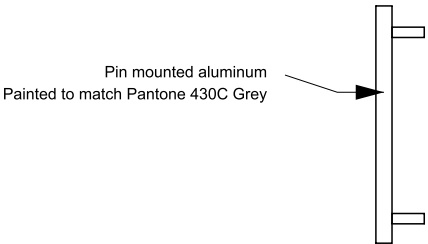
\*REGISTERED "R" IS NOT INCLUDED WITH THE BUILDING LOGO



giant eagle SECTION DETAIL  
NOT TO SCALE



LEAF SECTION DETAIL  
NOT TO SCALE



RULE LINE SECTION DETAIL  
NOT TO SCALE

These drawings are not for construction purposes. The information contained herein is intended to express design intent only. This original design is the sole property of Blair Image Elements. It cannot be reproduced, copied or exhibited, in whole or in part, without first obtaining written consent from Blair Image Elements.



Square Footage for "Leaf & Rule Line" - 10.2  
Square Footage for "Giant Eagle" - 48.2  
Total Square Footage - 58.4



"beer & wine" - 31.7 Sq Ft



"pharmacy" - 32.6 Sq Ft



"giant eagle" - 29.2 Sq Ft  
"beer & wine" - 14.4 Sq Ft

These drawings are not for construction purposes. The information contained herein is intended to express design intent only. This original design is the sole property of Blair Image Elements. It cannot be reproduced, copied or exhibited, in whole or in part, without first obtaining written consent from Blair Image Elements.



GROUND SIGNS	ALLOWED total sf	CURRENTLY INSTALLED	PROPOSED	CODE	VARIANCE (Y/N)
EXISTING GROUND SIGN	150 SF TOTAL	43.6 SF	NO CHANGE	150 SQ FT ALLOWABLE SQ FT. MONUMENT IS EXISTING. WILL STILL REQUIRE PERMITS	N
WALL SIGNS	ALLOWED total sf	CURRENTLY INSTALLED	PROPOSED	CODE	VARIANCE (Y/N)
S1 - 60" GIANT EAGLE CHANNEL LETTERS	80 SF	0 SF	145.5 SF	2 SF PER L FOOT OF BUILDING WALL WIDTH. MAX 80 SQ FT PER FACE SIGN. CANNOT EXTEND ABOVE ROOF OR PARAPET	Y
EXISTING BEER & WINE LETTERS	80 SF	31.7 SF	NO CHANGE		N
EXISTING PHARMACY LETTERS	80 SF	32.6 SF	NO CHANGE		N
EXISTING 36" GIANT EAGLE CHANNEL LETTERS ON SIDE	80 SF	58.4 SF	NO CHANGE		N

COMMENTS

TEMPORARY BANNERS (5 ALLOWED) AGGREGATE OF 378 SQ FT, LOGO CANNOT EXCEED 15% OF SIGN FACE BANNER. 30 DAYS MAX, SIGNS FOR THE SAME EVENT WILL NOT BE APPROVED MORE THAN ONCE PER YEAR. VARIANCE REQUIREMENTSCOPMLETED VARIANCE APPLICATION WITH 400.00 FEE, AND STATEMENT OF HARDSHIP.45 CALENDAR DAYS REQUIRED TO PROCESS. APPLICATION DUE 21 CALENDAR DAYS BEFORE BOARD HEARING.

These drawings are not for construction purposes. The information contained herein is intended to express design intent only. This original design is the sole property of Blair Image Elements. It cannot be reproduced, copied or exhibited, in whole or in part, without first obtaining written consent from Blair Image Elements.

Jobsite Code of Conduct and Basic Expectations

As an Independent Contractor, the Subcontractor acknowledges that, while operating separately from Blair and the Owner, they represent the Owner to the public. The Subcontractor, along with any approved subcontractors, agrees to uphold the following Code of Conduct while performing work for Blair. These expectations ensure professionalism for all parties involved, including the Subcontractor, Blair, and the Owner.

1. Professional Behavior

- Refrain from using profanity.
- Avoid wearing offensive or inappropriate clothing.
- Smoking is only permitted in designated areas, away from the worksite.
- Loud music is prohibited.
- Horseplay or unsafe conduct is strictly prohibited.
- Always maintain a professional workplace environment. Treat customers, patrons, and the public with respect and courtesy.

2. Site Protocol

- Notify the site manager upon arrival and departure from the site.
- Review the work and safety plan with the site manager before beginning work.
- Clearly mark the work area using cones, caution tape, or an appropriate barricading system, in accordance with required safety protocols.
- Always use the proper Personal Protective Equipment (PPE).
  - Maintain a clean, organized, and safe work environment.
  - Properly dispose of trash and recycle when possible.
  - Pets and animals are not allowed on the worksite.
- Individuals not employed by the installation company are prohibited from work site.

3. Worksite Appearance

- Ensure the site is properly branded at the end of each workday. Temporary banners must be installed at designated locations to ensure visibility and compliance.

By following these expectations, the Subcontractor helps maintain a safe, respectful, and professional work environment for Blair and the Owner.

Installation Instructions

Upon delivery, the installation instructions will be included with the product, typically housed in a plastic sleeve attached directly to the crate. For more detailed installation instructions or a copy of the site-specific scope of work, please contact your Blair Project Manager.

All necessary installation hardware must be provided by the installer.

Communication and Work Progress Reporting

The Subcontractor, including any approved subcontractors, must provide regular updates to the Blair Project Manager regarding work progress at the site. At a minimum, the following communication is required:

- **Arrival Notification:** A confirmation text message/email within 15 minutes of arriving at the site.
- Mid-Day Update:** A text message/email with the current work status.
- Departure Notification:** A text message/email within 15 minutes of leaving the site, including a summary of completed work and relevant photographs of both completed and in-progress work.
- Completion Photographs:**
  - Lit branding elements must show nighttime conditions or illuminated LEDs/bulbs.
  - [other photos determined by PM]
  - [other photos determined by PM]

If there are any questions, concerns, or requests for additional instructions, the Subcontractor should contact the Blair Project Manager while on-site. Any change orders or deviations must be submitted in writing to the Project Manager before proceeding with the work.

Upon completion of work, the Subcontractor must obtain written acceptance of the completed work from the site manager and provide a copy of this documentation to Blair.

Service Contact Information

**Phone:** (814) 283-2177  
**Service Hours:** Monday Friday | 8:00 AM 4:30 PM EST  
**Website:** www.blairimage.com/contact-blair/  
**Email:** service@blairimage.com  
**Emergency/After 4:30pm:** (800) 563-9598

Safety Criteria

All subcontractors working for Blair are required to complete the Blair Safety Certification Program and comply with OSHA regulations, along with all applicable local, state, and federal laws. Subcontractors must provide documentation of:

- COI (Proof of minimum Liability)
- Workers Comp
- W-9
- MSA
- Blair Install Safety Certification
- JSA for every component of the project

Subcontractors working on petroleum sites must also hold a valid API Certification and adhere to API guidelines.

Safety Protocols

- Blair should be NOTIFIED IMMEDIATELY for any and all incidents.**
- Job Safety Analysis:** Conduct a thorough safety analysis before beginning work.
- First Aid and Emergency Response:** Be aware of the location of first aid supplies and medical treatment facilities, including CPR protocols.
- Personal Protective Equipment"(PPE):** Use appropriate PPE for each task.
- Tools and Equipment:** Ensure tools are in safe working order and are used for their intended purpose within safe operating limits.
- Vehicle Operation:** Vehicle operators must comply with all DOT and API regulations.
- **Fall Protection:** Use appropriate fall arrest equipment when required.
- Working at Heights:** Understand and follow safety requirements for working at heights.
- **Worksite Barricading:** Properly barricade the work area to protect against potential hazards.
- **Lifting Operations:** Only trained and competent personnel should perform lifting tasks using approved equipment.

Adhering to these safety criteria ensures a safe and compliant work environment for all personnel.

These drawings are not for construction purposes. The information contained herein is intended to express design intent only. This original design is the sole property of Blair Image Elements. It cannot be reproduced, copied or exhibited, in whole or in part, without first obtaining written consent from Blair Image Elements.