



A. PROJECT INFORMATION

1. ZONING DEVELOPMENT REVIEW CASE INFORMATION

Application is: ☒ Development Project ☐ Protest Appeal

BDA Case Number: BDA-2025-02260

Project Description: Install 21 sf window sign (Chick-fil-A) at front on third floor of existing 17 story structure within EMI district

Case Review Date: March 2025

2. SITE INFORMATION

Development Address: 1000 Locust St

Parcel (s): 2-L-221

Zoning Designation: EMI

Neighborhood: Bluff

Registered Community Organization: Hill CDC & Hill DC & Hill DCG & Uptown Partners of Pittsburgh

Date of Development Activities Meeting: NA

B. ZBA REQUESTS

Type of Request: Variance

Code Section: [919.03.M.3.\(a\)](#)

Description: Only one wall sign is permitted for each street frontage within EMI district, additional tenant business identification sign is requested

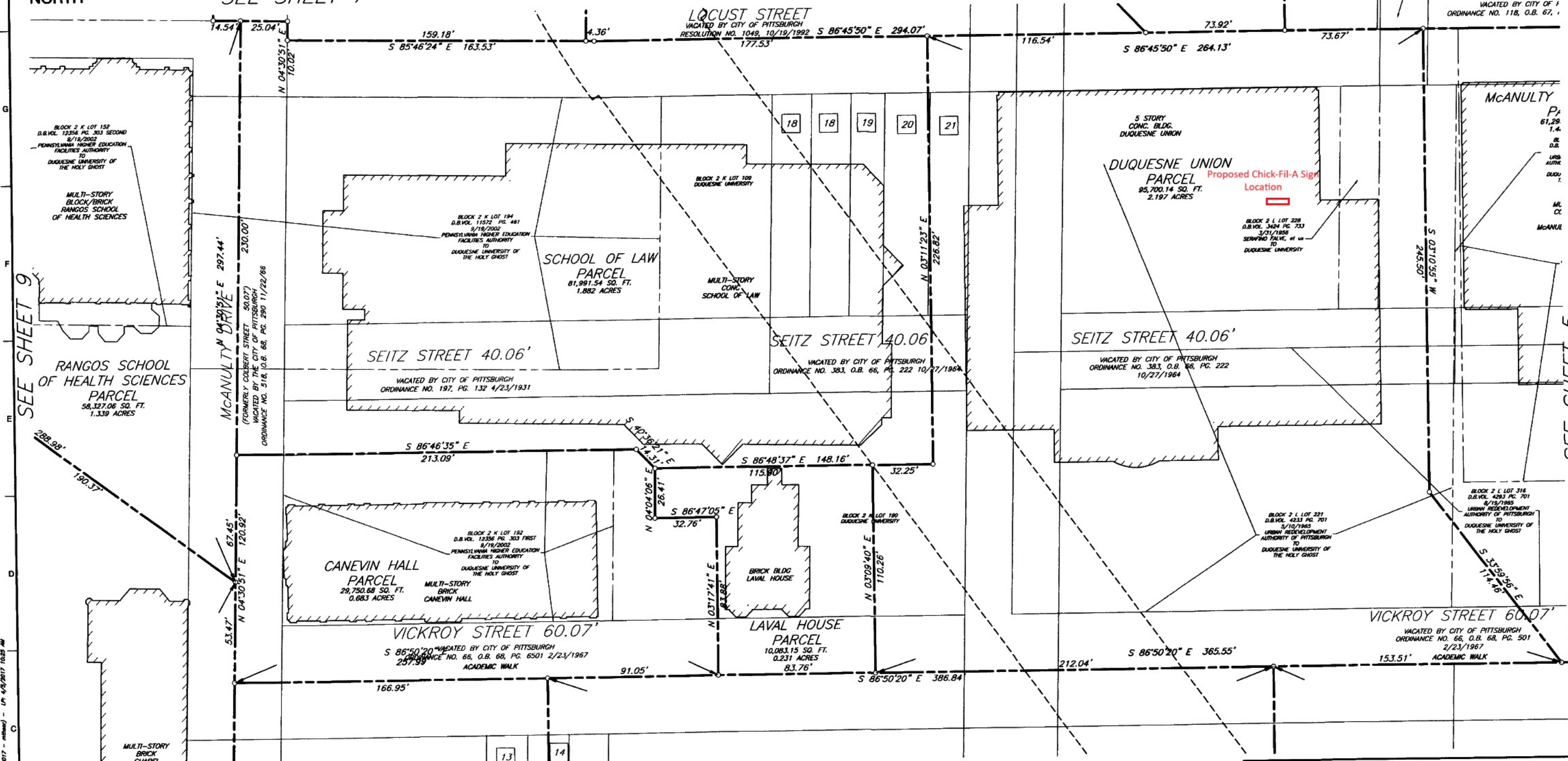


NORTH

SEE SHEET 7

SEE SHEET 6

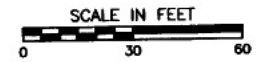
REVISION RECORD		
NO	DATE	DESCRIPTION




CITY OF PITTSBURGH
DEPARTMENT OF CITY PLANNING
APPROVED DATE: May 2, 2017
CITY PLANNING COMMISSION

CHAIRMAN

ATTEST: [Signature]
SECRETARY





Civil & Environmental Consultants, Inc.
333 Baldwin Road - Pittsburgh, PA 15205
Ph: 412.429.2324 • 800.365.2324 • Fax: 412.429.2114
www.cecinc.com

**DUQUESNE UNIVERSITY
CONSOLIDATION PLAN NO. 4**
Situate in
**1ST WARD, CITY OF PITTSBURGH
ALLEGHENY COUNTY, PENNSYLVANIA**
Made For
**DUQUESNE UNIVERSITY
OF THE HOLY SPIRIT**
(SEE AFFIDAVIT OF CLARIFICATION OF TITLE RECORDED IN D.B.V. 16505, PG. 327)

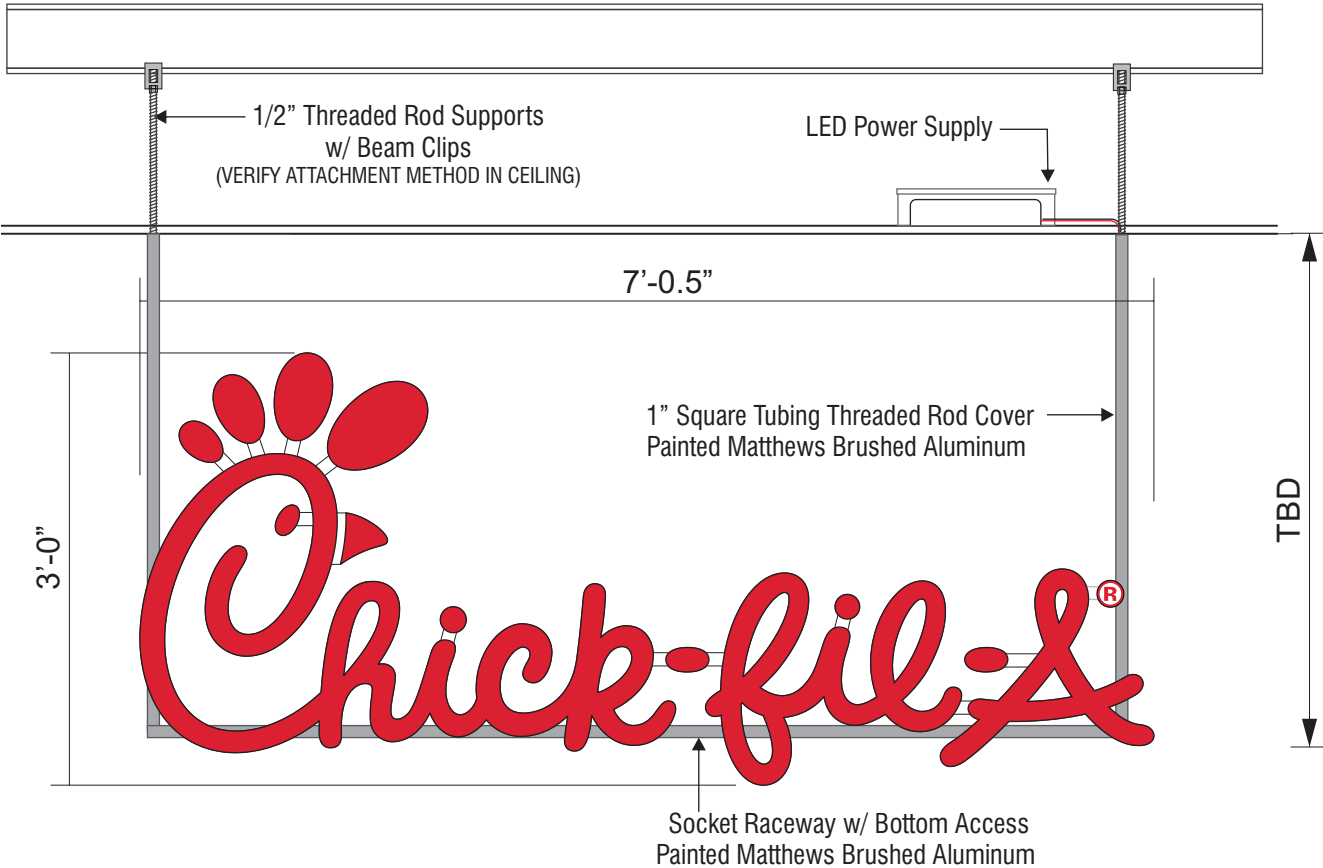
DATE:	3/10/2017	SCALE:	1"=30'	DRAWING NO.:
DRAWN BY:	DRAFT	CHECKED BY:	JRB	CON
PROJECT NO.:	072-016	APPROVED BY:	DGG	

8 OF 12



S:\Projects\2017\072-016-Duquesne University\072-016-Campus Survey\Task 2-Update 2.dwg(SHEET 4) LS(04/05/2017 - mmm) - 10:49:20 10/27/2017 10:28 AM

SIGN TYPE: 36" SUSPENDED LO-PRO
INTERNALLY ILLUMINATED
QTY: 1



Detail
a

Heritage Script Lo Profile Face & Edge Lit Acrylic Letters

Scale: 3/4" = 1'

SHAPES+ LIGHT TAPE



- FEATURES:**
- 16.4FT (5M) per reel
 - Interior Rated (IP65)
 - Exterior Rated (IP65) - Silicone encased
 - Standard Density = 300 Diodes/foot
 - High Density = 600 Diodes/foot
 - WHITE: 2700K, 4500K, 6500K & 8000K
 - RGB w/Controllers
 - Beam angle: 115°
 - 12V/DC
 - Can be cut at the printed marks

- SAFETY CERTIFICATION:**
- UL, CSA, CE & RoHS compliant

CONNECTORS:

- INTERIOR: 1CN-07-070 (1 END)
1CN-07-071 (2 END)
- EXTERIOR: 1CN-07-097 (1 END)
1CN-07-098 (2 END)
- RGB: 1CN-07-112 (2 END)

APPLICATIONS:

- May be suitable for POP displays, cove and contour lighting in places such as hotels, shopping malls, homes, cabinets, etc.

INSTALLATION:

- Easy installation with double-sided adhesive tape

WARRANTY:

- 3 years Material and Labor warranty
- 3 years or 13,000 hours, whichever comes first

SHAPES+ LED POWER SUPPLY

PS-60W-100-277VAC



Class 2 Power Supply

FEATURES:

- Input: 100-277 VAC; Output: 12VDC 5A
- Fire rating UL94 V-0 (UL and FCC authentication)
- 25 units per case

APPLICATIONS:

- IP-68 rated, metal encased for indoor/outdoor use

INSTALLATION:

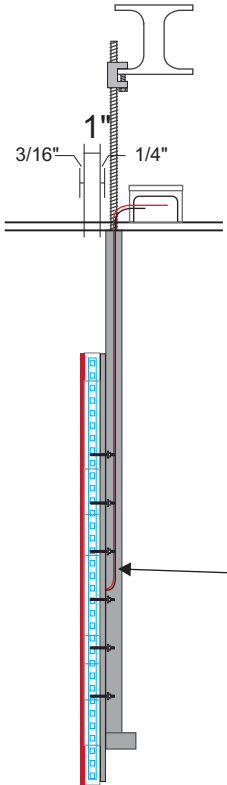
- Lock Screw & Screw-on connectors

WARRANTY:

- 5 year Material & Labor (max \$200 per site)
- 5 years or 50,000 hours, whichever comes first

PRODUCT PARAMETERS:

Output Characteristics	Rated Output: Voltage/Current/Power	12V/5A/60W
	Output Voltage Accuracy	±2.5% (11.7-12.3V)
	Output ripple & noise	≤150mV
	Input Voltage Range	100VAC~277VAC
Input Characteristics	Input Frequency Range	50~60HZ
	Input Current	0.78A/115V 0.35/230V
	Inrush Current (cold start)	≤50A(100-240VAC)
	Efficiency	≥86%
Protective Characteristics	PF	≥0.95
	Protection against: Over-Current, Short-Circuit, Over-Voltage & Over Temperature	■ YES □ NO
	Working Humidity	20~95%RH, (non-condensing)
	Storage Humidity	10~95%RH
Environmental Characteristics	Vibration	10~500HZ, 5G, 30 minutes (for X, Y, Z each axis)
	Safety Standard	UL879
	Dielectric Strength (Hi-Pot)	I/P-O/P 3.75KVAC/ 10mA/ 3S
	I/P-Case	1.8 KVAC/ 10mA/ 3S
Safety and EMC	Insulation Resistance	100MΩmax/ 500VDC/ 3S
	Grounding Resistance	100mΩmax
	EMC	FCC part 15classB EN55015
	MTBF	≥335Khrs. MIL-HDBK-217F(25°C)
Other:		

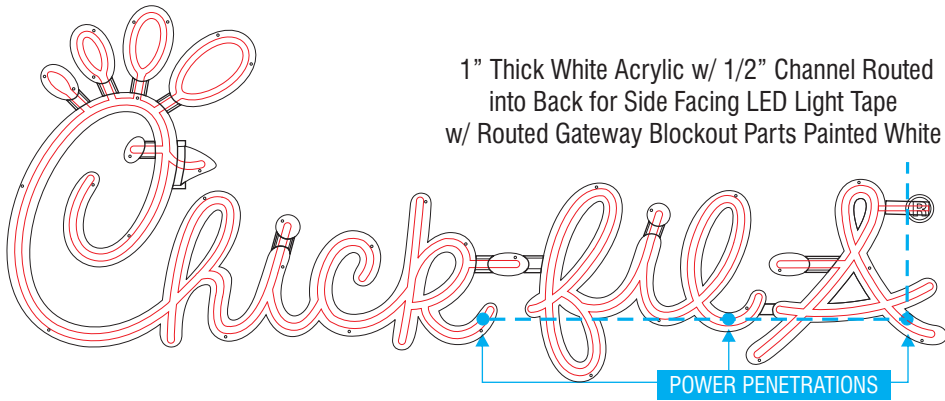
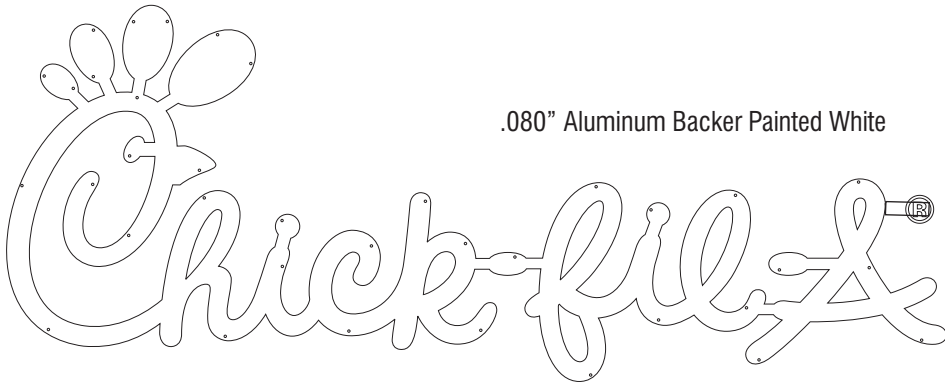


Detail
a

Profile

Scale: 1" = 1'

NOTE:
BACK SIDE OF SIGN WILL BE
VISIBLE FROM INTERIOR OF
DINING AREA, SO IT WILL NEED
TO BE FINISHED AND PAINTED



CLAYTON Signs
C UL US LISTED

CHANNEL LETTERS (WHITE ILLUMINATION)

LED's
JTSLS065W-0.5 WHITE LED
POWER SUPPLY
BL-120-12-60 POWER SUPPLY

WET LOCATION

CONNECT THE AC LINE TO THE BLACK (LINE) AND WHITE (NEUTRAL) INPUT WIRES OF THE POWER SUPPLY USING 18-14 AWG TWIST ON WIRE CONNECTORS. GROUND POWER SUPPLY GREEN WIRE TO GROUNDING SCREW. REPLACE JUNCTION BOX COVER.

Wet location wiring diagram

THIS SIGN IS INTENDED TO BE INSTALLED IN ACCORDANCE WITH REQUIREMENTS OF ARTICLE 600 OF THE NATIONAL ELECTRICAL CODE AND/OR APPLICABLE LOCAL CODES. THIS INCLUDES PROPER GROUNDING & BONDING OF THE SIGN.

Single Qwik Box

DIMENSIONS: 11.0583" x 5.1704" x 3.6537"

SPECIFICATIONS

Part Number	Description
PL-QB1-60-12-U (B-QB51A-06012)	Single Qwik Box with 1 Universal 60W (12V) Power Supply
PL-QB1-60-12-U (P-OH060-12-PL)	Includes: (1) PL-QB1-60-12-U (P-OH060-12-PL)



5198 NORTH LAKE DRIVE
LAKE CITY, GA 30260
404-361-3800
FAX 404-361-7038
WWW.CLAYTONSIGNS.COM

DATE - 05 / 19 / 2021
SIGN TYPE
SIGN PACKAGE

CLIENT
CHICK-FIL-A
DUQUESNE UNIVERSITY
600 Forbes Ave
Pittsburgh, PA 15282

REVISIONS:
REVISION # - DATE

DESIGNER Nathan Diffe
ACCOUNT REP. SF

SCALE: AS INDICATED
DRAWING FILE NAME
O:\Nathan Diffe\CHICK-FIL-A \ CFA - DUQUESNE
UNIVERSITY \ CFA - DUQUESNE UNIVERSITY
SIGN PACKAGE - 05_19_22.CDR

DRAWING
STATUS:



THIS DRAWING IS AN ORIGINAL, UNPUBLISHED
DESIGN CREATED BY CLAYTON SIGNS, INC. IT IS
NOT TO BE REPRODUCED, CHANGED, OR
EXHIBITED TO ANYONE OUTSIDE OF YOUR
COMPANY IN WHOLE OR IN PART WITHOUT
WRITTEN PERMISSION FROM THE OWNER OF
CLAYTON SIGNS, INC. ANY SUCH ACTIONS MAY BE
SUBJECT TO LEGAL ACTION IN A COURT OF LAW.
© 2019 ALL RIGHTS RESERVED

PAGE
1

Duquesne Chick-fil-A Signage



Lo-Pro Interior Script Sign, suspended from ceiling. Back of sign can be fabricated to look more finished for rear visibility.



