

PROPOSED PHASE 4 PARK FEATURES & IMPROVEMENTS:

- 26

PAVED DESIGNATED BICYCLE LANE:
Solid red lines on the plan represent paved bicycle lanes that extend through the base of Sheraden Park and connect across Chartiers Creek to the neighboring McKees Rocks. Additional designated bicycle lanes are proposed throughout the Sheraden community in order to better connect to adjacent neighborhoods and even to downtown Pittsburgh.
- 27

MOUNTAIN BIKE TRAIL:
Dotted red lines on the plan represent a proposed looping mountain bike trail that spans the three parks before connecting to the paved designated bicycle lane on the road and connecting back to Sheraden Park. This trail is intended to be for mountain bikes only and will incorporate signage to keep others off of the trail for safety.
- 28

PEDESTRIAN BRIDGE TO MCKEES ROCKS:
Indicates a proposed pedestrian and emergency vehicle bridge connecting the waterfront zone of Sheraden Park to the neighboring McKees Rocks community. The proposed bridge is strategically located in an area that will provide access to future planned McKees Rocks downtown development. This plan aims to couple Sheraden Park improvements nicely with future parking, retail and waterfront access on the McKees Rocks side of Chartiers Creek.
- 29

KAYAK RENTALS: THIRD PARTY OPERATOR
Proposes a kayak and canoe rental facility operated by a third party vendor on Chartiers Creek. This proposed rental facility will provide easy access to the water without needing to carry boats in from the nearest parking area. All revenue is proposed to be used for park maintenance and operations.
- 30

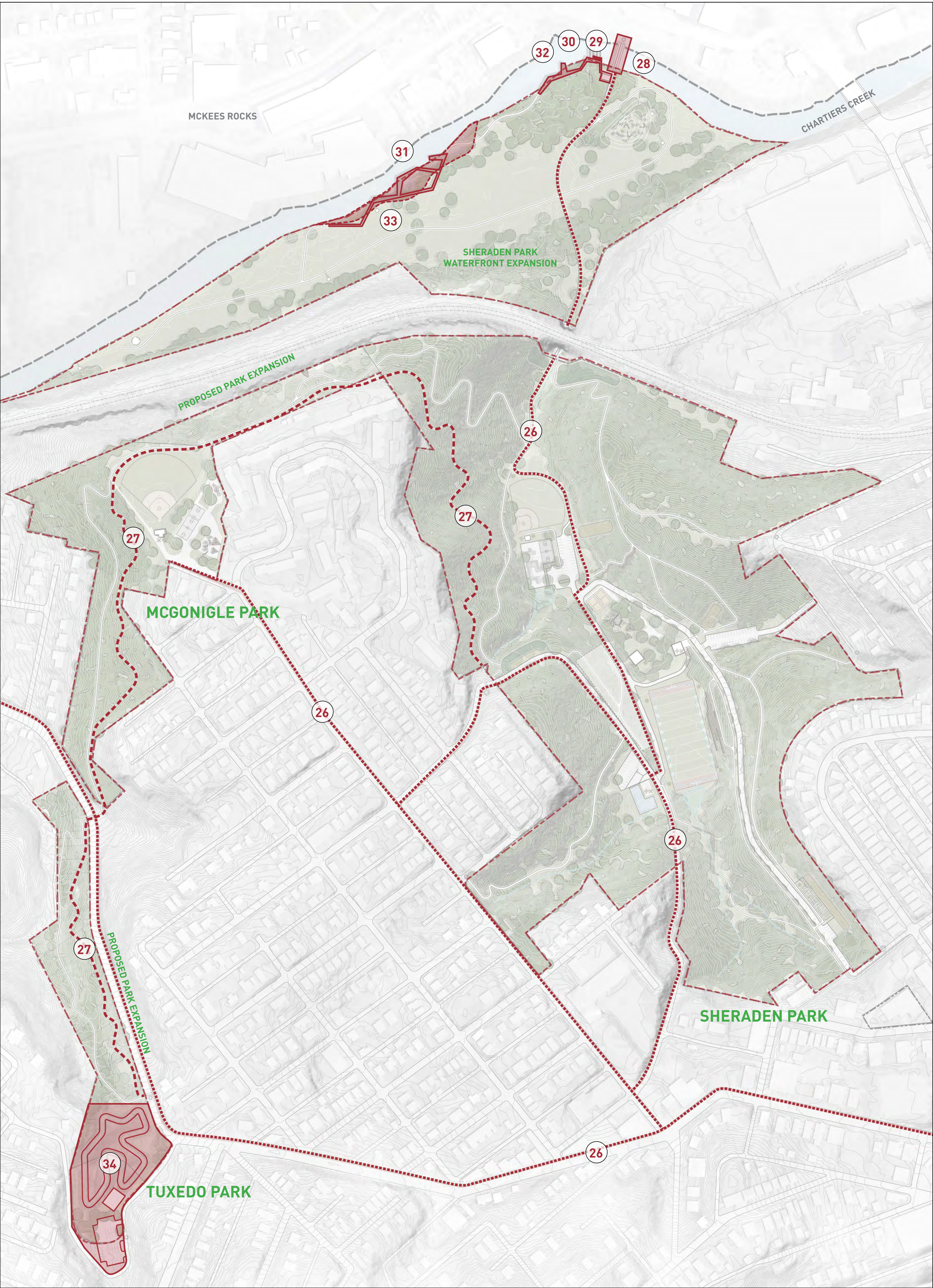
CHARTIERS CREEK BOAT LAUNCH:
Indicates a proposed boat launch for non-motorized kayaks and canoes adjacent to the proposed rental facility. This proposed boat launch will incorporate a series of floating finger docks and gangways designed to be flexible during flooding and storm events. These launches will provide easy drop in and pull out. ADA accessible boat launches will also be available.
- 31

CREEK BOARDWALK & NATURE OBSERVATION:
Indicates a proposed boardwalk paralleling the edge of Chartiers Creek. The proposed boardwalk will weave in and out of proposed creekside wetlands and aquatic habitat improvement areas as it provides multiple points for recreation, relaxation and nature observation along this quiet portion of Chartiers Creek.
- 32

FLEXIBLE FISHING/BIRDING/EXERCISE PIER:
Indicates a proposed creekside flexible pier to be used for fishing, birding exercise classes and other potential programming. This proposed pier is located adjacent to the boat launch and proposed connection point to McKees Rocks, giving it plenty of opportunity to be utilized by various user groups.
- 33

LEWIS AND CLARK HISTORICAL SIGNAGE & PROGRAMMING:
As the official starting point of the historic Lewis and Clark Trail, Brunots island is located just downstream of Sheraden Park and provides an opportunity for many unique educational events to take place within the park. Proposed signage and classes in canoing, cordeling, map making, orienteering, bird watching and plant identification can take place throughout the year to teach community members some of the skills necessary for the infamous Lewis and Clark expedition.
- 34

DIRT BIKE FACILITY: THIRD PARTY OPERATOR
Located in Tuxedo park, in the area of the relocated skate park, This proposed dirt bike facility will be operated by a third party vendor and provide an official and safe environment for community members and other Pittsburgh residents to learn to responsibly ride motorized dirt bikes. The proposed facility will rent motorized bikes on site and be fenced in to prohibit dirt bikes from leaving the official riding zone. The proposed facility is located to keep noise levels low and away from as many homes in the community as possible, while also keeping dirt bikes away from the more quiet and contemplative features of Sheraden Park.



PHASE 4: LONG TERM PROJECTS

ONGOING PARK IMPROVEMENTS:

HIKING TRAIL ADDITIONS & IMPROVEMENTS:

- Trail building
- Trail maintenance
- Trash pickup
- Historic stone steps restoration

ERODED SLOPE STABILIZATION

- Slope repair
- Tree planting

INVASIVE PLANT SPECIES MANAGEMENT

- Japanese knotweed cutback
- Tarp smothering
- Native plant installations

AQUATIC HABITAT PROTECTION & MANAGEMENT

- Trail maintenance
- Trash pickup
- Native plant installations