

STUDIO|BRYAN HANES



BREAN
ASSOCIATES

SciTek
CONSULTANTS, INC.



pittsburgh
city planning

SHERADEN PARK MASTER PLAN

COMMUNITY EVENT #2 RECAP

STATION 1: COMMUNITY EVENT #1 RECAP



SURVEY RESPONSES

COMMUNITY EVENT EXIT SURVEY

1. Did you feel this survey is a helpful platform to express your opinions about Sheraden Park?

2. How did you feel about this event? (Circle all that apply)

3. Can you think of an activity that would better help us gather your ideas about Sheraden Park and the community?

4. How did you feel about this event? (Circle all that apply)

5. Who was missing from this event? Who else should be part of the planning process for the park?

6. Do you think you will participate in our next community engagement event in October 2027?

7. Do you have any last opinions about the future of Sheraden Park that you did not share during today's event? (Use reverse side if you need more space)

"IT SHOULD BE DECLARED A WILDLIFE SANCTUARY"

"PLEASE DON'T OVER DEVELOPED"

"WE NEED A BUILDING FOR KIDS TO DO ACTIVITIES INDOORS AND OUT AFTER SCHOOL"

INTERACTIVE MAPPING ACTIVITIES

WHERE DO YOU AVOID IN THE PARK?
WHERE DO YOU FEEL SAFE?

HOW DO YOU MOVE THROUGH THE PARK?
HOW DO YOU GET TO THE PARK?

VISUAL PREFERENCE PHOTOS

EMBANKMENT SLIDES 16	FORESTED CANOPY WALK 15	BEACH 12	KAYAK/ CANOE LAUNCH 11
ADVENTURE COURSE 11	GATHERING PAVILION 7	PLAY STRUCTURE 7	WINTER ACTIVITY TRAILS 6
GATHERING PAVILION 6	LARGE EVENT SPACE 6	GATHERING PAVILION 5	SLEDDING HILL 5

MOST POPULAR PHOTOS FROM LAST TIME

PARK VALUES QUESTIONS

WHAT WOULD MAKE SHERADEN PARK A GREATER ASSET TO THE COMMUNITY?

-BETTER LIGHTING
-AN AMPHITHEATER
-MORE PARKING

-AN APIARY
-A DOG PARK
-ACCESS TO MCKEES ROCKS

WHAT WOULD MAKE YOU FEEL MORE COMFORTABLE IN SHERADEN PARK?

-WORKING BATHROOMS
-MORE POLICE PRESENCE
-BETTER TRAIL MAINTENANCE

WHAT IS CURRENTLY MOST IMPORTANT TO YOU ABOUT SHERADEN PARK?

-WILDLIFE
-TRAILS & OPEN SPACE
-ACTIVITIES FOR THE KIDS

WHAT IS YOUR GREATEST CONCERN ABOUT THE PARK?

-SAFETY & LIGHTING
-DRUGS & VANDALISM
-DUMPING

-INVASIVE SPECIES
-ACCESS
-MAINTENANCE

GRAFFITI BOARD

MORE AWARENESS OF WILDLIFE
OUR OWN GARDEN TO PLAY ANYTHING WE WANT
FITNESS, YOGA, ETC. CLASSES IN THE SUMMER
ZIPLINE
WILDLIFE PARK
HIKING, BIKING, WELLNESS AND ARTS
POLLINATOR GARDENS
NATIVES!
DECLARED A WILDLIFE SANCTUARY!
ADD TUXEDO SKATE PARK
WILDLIFE PROTECTION AND AWARENESS
AN APIARY
MORE WILDLIFE PROTECTION AND AWARENESS
EMBANKMENT SLIDE LOOKS AMAZING!
SLEDDING
DOGS PARK
Hiking Trails
VOLLEYBALL
SPRAY PARK
MORE HIKING TRAILS
MORE GARDENS!
SOMETHING THAT ATTRACTS MORE PERMANENT RESIDENTS

SIGNATURE USES

WHAT WOULD ELEVATE SHERADEN PARK TO PITTSBURGH SIGNATURE PARK STATUS?

WHAT WOULD MAKE YOU FEEL MORE COMFORTABLE IN SHERADEN PARK?

WHAT IS CURRENTLY MOST IMPORTANT TO YOU ABOUT SHERADEN PARK?

WHAT IS YOUR GREATEST CONCERN ABOUT THE PARK?

STEERING COMMITTEE INTERVIEWS

AFFILIATED ORGANIZATIONS & DEPARTMENTS:

- Theresa Kail-Smith - City Council Woman, District 2
- Kevin Pawlos - Assistant Director, Operating Budget, Mayor's Office
- Tom Paulin - Superintendent of Parks, Department of Public Works
- Andrea Ketzel - Landscape Architect, Department of Public Works
- Joe Fedor - Environment Scientist, ALCOSAN
- Jeane Clark - Director of Governmental Affairs, ALCOSAN
- Henry-Horn-Pyatt - Small Business & Redevelopment Manager
- Ana Flores - Engineer III, PWSA
- Susan Rademacher - Parks Curator, Pittsburgh Parks Conservancy

RESIDENT VOICES:

- Debra Bailey - President, Sheraden Community Council
- Lallon Thompson - Resident
- Jeb Feldman - Director of Economic Development, McKees Rocks CDC
- Taris Vrcek - Director, McKees Rocks CDC
- Rick Hildebrand - Sheraden Baseball / Resident
- Marianne Muraska - Sheraden Kiwanis Club / Resident
- Shawn Smith - Resident
- Don Scholz - American Legion / Resident

STATION 2:

SCHEME A: WILDERNESS & ECOLOGY



SCHEME A: RENDERINGS



CURRENT CONDITION:



CREEK & WETLAND BOARDWALK:



SCHEME A SURVEYS

SURVEY - SCHEME A: WILDERNESS & ECOLOGY

1. A primary feature of Scheme 'A' is a series of creek and wetland boardwalks. The boardwalks give visitors a direct access to Chartiers Creek and allow for opportunities to fish, bird watch and kayak. What do you think? (Circle one)

I like it a lot! I like it somewhat I dislike it somewhat I strongly dislike it I'm not sure

2. Scheme 'A' introduces a forest canopy walk that allows visitors to get up high and reach sweeping views of the park and neighborhoods below. What do you think? (Circle One)

I like it a lot! I like it somewhat I dislike it somewhat I strongly dislike it I'm not sure

3. Imagine how you might use the park. What do you think of the arrangement of new paths, the new connections to neighboring McGonnigle and Tuxedo Parks and the pedestrian experiences offered along the way?

I like it a lot! I like it somewhat I dislike it somewhat I strongly dislike it I'm not sure

4. What is your overall impression of Scheme 'A'?

I like it a lot! I like it somewhat I dislike it somewhat I strongly dislike it I'm not sure

5. Please leave any additional comments on the back!



THANK YOU FOR YOUR HELP!

SURVEY - SCHEME A: WILDERNESS & ECOLOGY

1. A primary feature of Scheme 'A' is a series of creek and wetland boardwalks. The boardwalks give visitors a direct access to Chartiers Creek and allow for opportunities to fish, bird watch and kayak. What do you think? (Circle one)

I like it a lot! I like it somewhat I dislike it somewhat I strongly dislike it I'm not sure

2. Scheme 'A' introduces a forest canopy walk that allows visitors to get up high and reach sweeping views of the park and neighborhoods below. What do you think? (Circle One)

I like it a lot! I like it somewhat I dislike it somewhat I strongly dislike it I'm not sure

3. Imagine how you might use the park. What do you think of the arrangement of new paths, the new connections to neighboring McGonnigle and Tuxedo Parks and the pedestrian experiences offered along the way?

I like it a lot! I like it somewhat I dislike it somewhat I strongly dislike it I'm not sure

4. What is your overall impression of Scheme 'A'?

I like it a lot! I like it somewhat I dislike it somewhat I strongly dislike it I'm not sure

5. Please leave any additional comments on the back!



THANK YOU FOR YOUR HELP!

SURVEY - SCHEME A: WILDERNESS & ECOLOGY

1. A primary feature of Scheme 'A' is a series of creek and wetland boardwalks. The boardwalks give visitors a direct access to Chartiers Creek and allow for opportunities to fish, bird watch and kayak. What do you think? (Circle one)

I like it a lot! I like it somewhat I dislike it somewhat I strongly dislike it I'm not sure

2. Scheme 'A' introduces a forest canopy walk that allows visitors to get up high and reach sweeping views of the park and neighborhoods below. What do you think? (Circle One)

I like it a lot! I like it somewhat I dislike it somewhat I strongly dislike it I'm not sure

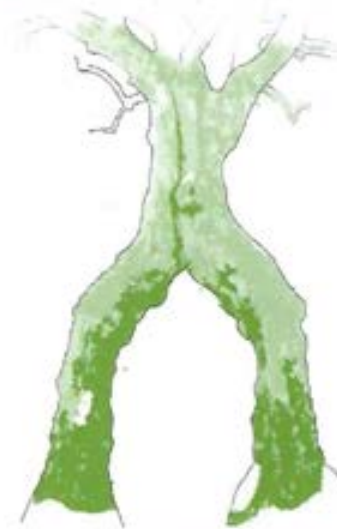
3. Imagine how you might use the park. What do you think of the arrangement of new paths, the new connections to neighboring McGonnigle and Tuxedo Parks and the pedestrian experiences offered along the way?

I like it a lot! I like it somewhat I dislike it somewhat I strongly dislike it I'm not sure

4. What is your overall impression of Scheme 'A'?

I like it a lot! I like it somewhat I dislike it somewhat I strongly dislike it I'm not sure

5. Please leave any additional comments on the back!



THANK YOU FOR YOUR HELP!

Like element of stormwater mitigation highlighted
Would like benches on a dock or on the wetland boardwalk
Love wetland boardwalk
Boat launch!

5. Please leave any additional comments on the back!
Add draw for naturalists, and other wildlife attracted to the area.

SURVEY - SCHEME A: WILDERNESS & ECOLOGY

1. A primary feature of Scheme 'A' is a series of creek and wetland boardwalks. The boardwalks give visitors a direct access to Chartiers Creek and allow for opportunities to fish, bird watch and kayak. What do you think? (Circle one)

I like it a lot! I like it somewhat I dislike it somewhat I strongly dislike it I'm not sure

2. Scheme 'A' introduces a forest canopy walk that allows visitors to get up high and reach sweeping views of the park and neighborhoods below. What do you think? (Circle One)

I like it a lot! I like it somewhat I dislike it somewhat I strongly dislike it I'm not sure

3. Imagine how you might use the park. What do you think of the arrangement of new paths, the new connections to neighboring McGonnigle and Tuxedo Parks and the pedestrian experiences offered along the way?

I like it a lot! I like it somewhat I dislike it somewhat I strongly dislike it I'm not sure

4. What is your overall impression of Scheme 'A'?

I like it a lot! I like it somewhat I dislike it somewhat I strongly dislike it I'm not sure

5. Please leave any additional comments on the back!

I like planning use as natural space - But community doesn't use what's there



THANK YOU FOR
YOUR HELP!

SURVEY - SCHEME A: WILDERNESS & ECOLOGY

1. A primary feature of Scheme 'A' is a series of creek and wetland boardwalks. The boardwalks give visitors a direct access to Chartiers Creek and allow for opportunities to fish, bird watch and kayak. What do you think? (Circle one)

I like it a lot! I like it somewhat I dislike it somewhat I strongly dislike it I'm not sure

2. Scheme 'A' introduces a forest canopy walk that allows visitors to get up high and reach sweeping views of the park and neighborhoods below. What do you think? (Circle One)

I like it a lot! I like it somewhat I dislike it somewhat I strongly dislike it I'm not sure

3. Imagine how you might use the park. What do you think of the arrangement of new paths, the new connections to neighboring McGonnigle and Tuxedo Parks and the pedestrian experiences offered along the way?

I like it a lot! I like it somewhat I dislike it somewhat I strongly dislike it I'm not sure

4. What is your overall impression of Scheme 'A'?

I like it a lot! I like it somewhat I dislike it somewhat I strongly dislike it I'm not sure

5. Please leave any additional comments on the back!

A-B-C Needs to be reviewed in various aspects



THANK YOU FOR
YOUR HELP!

SURVEY - SCHEME A: WILDERNESS & ECOLOGY

1. A primary feature of Scheme 'A' is a series of creek and wetland boardwalks. The boardwalks give visitors a direct access to Chartiers Creek and allow for opportunities to fish, bird watch and kayak. What do you think? (Circle one)

I like it a lot! I like it somewhat I dislike it somewhat I strongly dislike it I'm not sure

2. Scheme 'A' introduces a forest canopy walk that allows visitors to get up high and reach sweeping views of the park and neighborhoods below. What do you think? (Circle One)

I like it a lot! I like it somewhat I dislike it somewhat I strongly dislike it I'm not sure

3. Imagine how you might use the park. What do you think of the arrangement of new paths, the new connections to neighboring McGonnigle and Tuxedo Parks and the pedestrian experiences offered along the way?

I like it a lot! I like it somewhat I dislike it somewhat I strongly dislike it I'm not sure

4. What is your overall impression of Scheme 'A'?

I like it a lot! I like it somewhat I dislike it somewhat I strongly dislike it I'm not sure

5. Please leave any additional comments on the back!

These ideas are great but NOT FOR SHERADEN



THANK YOU FOR
YOUR HELP!

SURVEY - SCHEME A: WILDERNESS & ECOLOGY

1. A primary feature of Scheme 'A' is a series of creek and wetland boardwalks. The boardwalks give visitors a direct access to Chartiers Creek and allow for opportunities to fish, bird watch and kayak. What do you think? (Circle one)

I like it a lot! I like it somewhat I dislike it somewhat I strongly dislike it I'm not sure

2. Scheme 'A' introduces a forest canopy walk that allows visitors to get up high and reach sweeping views of the park and neighborhoods below. What do you think? (Circle One)

I like it a lot! I like it somewhat I dislike it somewhat I strongly dislike it I'm not sure

3. Imagine how you might use the park. What do you think of the arrangement of new paths, the new connections to neighboring McGonnigle and Tuxedo Parks and the pedestrian experiences offered along the way?

I like it a lot! I like it somewhat I dislike it somewhat I strongly dislike it I'm not sure

4. What is your overall impression of Scheme 'A'?

I like it a lot! I like it somewhat I dislike it somewhat I strongly dislike it I'm not sure

5. Please leave any additional comments on the back!



THANK YOU FOR
YOUR HELP!

SCHEME A: FEEDBACK

SURVEY - SCHEME A: WILDERNESS & ECOLOGY

1. A primary feature of Scheme 'A' is a series of creek and wetland boardwalks. The boardwalks give visitors a direct access to Chartiers Creek and allow for opportunities to fish, bird watch and kayak. What do you think? [Circle one]

<input checked="" type="radio"/> I like it a lot!	<input type="radio"/> I like it somewhat	<input type="radio"/> I dislike it somewhat	<input type="radio"/> I strongly dislike it	<input type="radio"/> I'm not sure
---	--	---	---	------------------------------------

2. Scheme 'A' introduces a forest canopy walk that allows visitors to get up high and reach sweeping views of the park and neighborhoods below. What do you think? [Circle One]

<input checked="" type="radio"/> I like it a lot!	<input type="radio"/> I like it somewhat	<input type="radio"/> I dislike it somewhat	<input type="radio"/> I strongly dislike it	<input type="radio"/> I'm not sure
---	--	---	---	------------------------------------

3. Imagine how you might use the park. What do you think of the arrangement of new paths, the new connections to neighboring McGonnigle and Tuxedo Parks and the pedestrian experiences offered along the way?

<input checked="" type="radio"/> I like it a lot!	<input type="radio"/> I like it somewhat	<input type="radio"/> I dislike it somewhat	<input type="radio"/> I strongly dislike it	<input type="radio"/> I'm not sure
---	--	---	---	------------------------------------

4. What is your overall impression of Scheme 'A'?

<input checked="" type="radio"/> I like it a lot!	<input type="radio"/> I like it somewhat	<input type="radio"/> I dislike it somewhat	<input type="radio"/> I strongly dislike it	<input type="radio"/> I'm not sure
---	--	---	---	------------------------------------

5. Please leave any additional comments on the back!

THANK YOU FOR YOUR HELP!

(over)



safety on the slide?

IF YOU'RE NOT A FISHERMAN, BIRD WATCHER OR KAYAKER
THERE IS MINIMAL OPPORTUNITY FOR KIDS TO PLAY

SCHEME 'A'

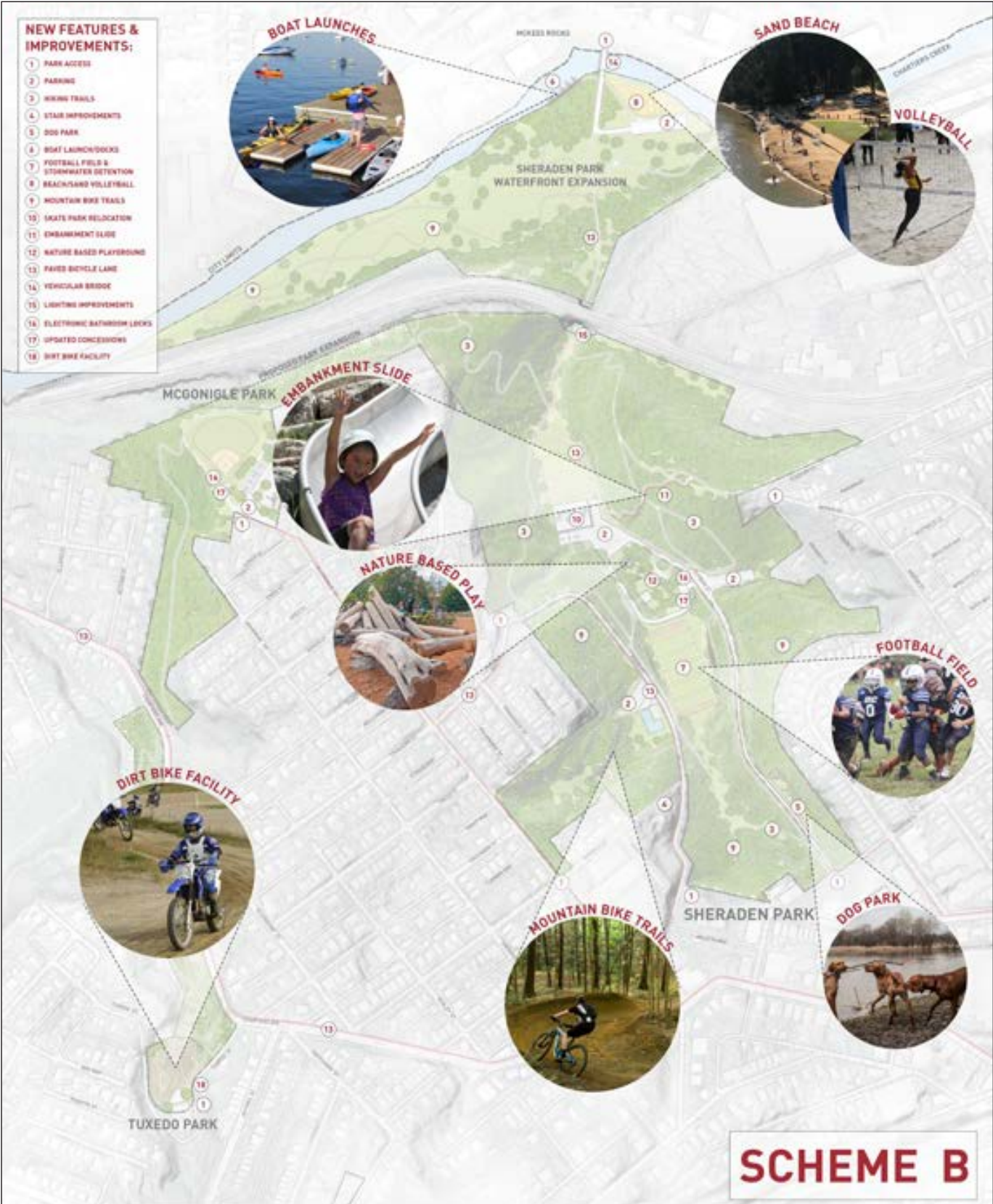
- dislike bridge to McKees Rocks
- likes connection to all parks
- like: forest canopy walk^{x4}
- Fishing is great! Forest walk too!
- Like:
 - Forest Walk
 - Overlook
 - Pedestrian bridge
 - Hiking trails
 - Boat launch
 - Look out
 - Kayak/Canoe Launch
 - Multi-use trails
 - wetland boardwalk
- Dislike:
 - Canopy Walk - too expensive
 - Parking in Wetland
 - Trail through McGonnigle Expansion across Chartiers Ave
 - ENVIRONMENTAL Education
 - *especially like the creek area to stay less disturbed - no parking or autos or dog park access due to water fowl
 - *need to make sure traffic & safety are addressed
 - *they seem a little excessive in this photo
 - Boy SC 0413

STATION 3:

SCHEME B: ACTIVE RECREATION



SCHEME B: RENDERINGS



HILLSIDE EMBANKMENT SLIDE:



SCHEME B SURVEYS

SURVEY - SCHEME B: ACTIVE RECREATION

1. A primary feature of Scheme 'B' is a large embankment slide built into the naturally steep slopes of the park. The slide could be a major draw of a Pittsburgh Signature park that brings visitors with children. What do you think? (Circle one)

I like it a lot! I like it somewhat I dislike it somewhat I strongly dislike it I'm not sure

2. Scheme 'B' introduces a network of mountain biking trails throughout Sheraden Park. This trail system could be a unique element that attracts bikers from around the city and even the region. What do you think? (Circle One)

I like it a lot! I like it somewhat I dislike it somewhat I strongly dislike it I'm not sure

3. Scheme 'B' designates the current upper ball field into a single use football field, while using the lower ball field for adult rec league softball events. Do you feel like these are the right uses for the fields?

I like it a lot! I like it somewhat I dislike it somewhat I strongly dislike it I'm not sure

4. What is your overall impression of Scheme 'B'?

I like it a lot! I like it somewhat I dislike it somewhat I strongly dislike it I'm not sure

5. Please leave any additional comments on the back!

pedestrian bridge preferred from McKees Rocks



THANK YOU FOR
YOUR HELP!

SURVEY - SCHEME B: ACTIVE RECREATION

1. A primary feature of Scheme 'B' is a large embankment slide built into the naturally steep slopes of the park. The slide could be a major draw of a Pittsburgh Signature park that brings visitors with children. What do you think? (Circle one)

I like it a lot! I like it somewhat I dislike it somewhat I strongly dislike it I'm not sure

2. Scheme 'B' introduces a network of mountain biking trails throughout Sheraden Park. This trail system could be a unique element that attracts bikers from around the city and even the region. What do you think? (Circle One)

I like it a lot! I like it somewhat I dislike it somewhat I strongly dislike it I'm not sure

3. Scheme 'B' designates the current upper ball field into a single use football field, while using the lower ball field for adult rec league softball events. Do you feel like these are the right uses for the fields?

I like it a lot! I like it somewhat I dislike it somewhat I strongly dislike it I'm not sure

4. What is your overall impression of Scheme 'B'?

I like it a lot! I like it somewhat I dislike it somewhat I strongly dislike it I'm not sure

5. Please leave any additional comments on the back!

Continued maintenance, safety, Programs to effectively utilize,



THANK YOU FOR
YOUR HELP!

SURVEY - SCHEME B: ACTIVE RECREATION

1. A primary feature of Scheme 'B' is a large embankment slide built into the naturally steep slopes of the park. The slide could be a major draw of a Pittsburgh Signature park that brings visitors with children. What do you think? (Circle one)

I like it a lot! I like it somewhat I dislike it somewhat I strongly dislike it I'm not sure

2. Scheme 'B' introduces a network of mountain biking trails throughout Sheraden Park. This trail system could be a unique element that attracts bikers from around the city and even the region. What do you think? (Circle One)

I like it a lot! I like it somewhat I dislike it somewhat I strongly dislike it I'm not sure

3. Scheme 'B' designates the current upper ball field into a single use football field, while using the lower ball field for adult rec league softball events. Do you feel like these are the right uses for the fields?

I like it a lot! I like it somewhat I dislike it somewhat I strongly dislike it I'm not sure

4. What is your overall impression of Scheme 'B'?

I like it a lot! I like it somewhat I dislike it somewhat I strongly dislike it I'm not sure

5. Please leave any additional comments on the back!

I like the community garden better



THANK YOU FOR
YOUR HELP!

SURVEY - SCHEME B: ACTIVE RECREATION

1. A primary feature of Scheme 'B' is a large embankment slide built into the naturally steep slopes of the park. The slide could be a major draw of a Pittsburgh Signature park that brings visitors with children. What do you think? (Circle one)

I like it a lot! I like it somewhat I dislike it somewhat I strongly dislike it I'm not sure

2. Scheme 'B' introduces a network of mountain biking trails throughout Sheraden Park. This trail system could be a unique element that attracts bikers from around the city and even the region. What do you think? (Circle One)

I like it a lot! I like it somewhat I dislike it somewhat I strongly dislike it I'm not sure

3. Scheme 'B' designates the current upper ball field into a single use football field, while using the lower ball field for adult rec league softball events. Do you feel like these are the right uses for the fields?

I like the nature based play for kids and think the slide can be incorporated in there somehow.

I think dirt biking should be totally removed from Sheraden Park and that moving it legally to Tuxedo would help.



SURVEY - SCHEME B: ACTIVE RECREATION

1. A primary feature of Scheme 'B' is a large embankment slide built into the naturally steep slopes of the park. The slide could be a major draw of a Pittsburgh Signature park that brings visitors with children. What do you think? (Circle one)

I like it a lot! I like it somewhat I dislike it somewhat I strongly dislike it I'm not sure

2. Scheme 'B' introduces a network of mountain biking trails throughout Sheraden Park. This trail system could be a unique element that attracts bikers from around the city and even the region. What do you think? (Circle One)

I like it a lot! I like it somewhat I dislike it somewhat I strongly dislike it I'm not sure

3. Scheme 'B' designates the current upper ball field into a single use football field, while using the lower ball field for adult rec league softball events. Do you feel like these are the right uses for the fields?

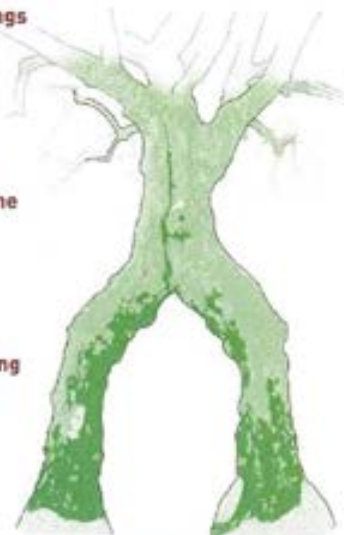
I like it a lot! I like it somewhat I dislike it somewhat I strongly dislike it I'm not sure

4. What is your overall impression of Scheme 'B'?

I like it a lot! I like it somewhat I dislike it somewhat I strongly dislike it I'm not sure

5. Please leave any additional comments on the back!

Need to keep nice picnic space



THANK YOU FOR
YOUR HELP!

SURVEY - SCHEME B: ACTIVE RECREATION

1. A primary feature of Scheme 'B' is a large embankment slide built into the naturally steep slopes of the park. The slide could be a major draw of a Pittsburgh Signature park that brings visitors with children. What do you think? (Circle one)

I like it a lot! I like it somewhat I dislike it somewhat I strongly dislike it I'm not sure

2. Scheme 'B' introduces a network of mountain biking trails throughout Sheraden Park. This trail system could be a unique element that attracts bikers from around the city and even the region. What do you think? (Circle One)

I like it a lot! I like it somewhat I dislike it somewhat I strongly dislike it I'm not sure

3. Scheme 'B' designates the current upper ball field into a single use football field, while using the lower ball field for adult rec league softball events. Do you feel like these are the right uses for the fields?

I like it a lot! I like it somewhat I dislike it somewhat I strongly dislike it I'm not sure

4. What is your overall impression of Scheme 'B'?

I like it a lot! I like it somewhat I dislike it somewhat I strongly dislike it I'm not sure

5. Please leave any additional comments on the back!

CONCERN ABOUT SAFETY ISSUES



THANK YOU FOR
YOUR HELP!

SURVEY - SCHEME B: ACTIVE RECREATION

1. A primary feature of Scheme 'B' is a large embankment slide built into the naturally steep slopes of the park. The slide could be a major draw of a Pittsburgh Signature park that brings visitors with children. What do you think? (Circle one)

I like it a lot! I like it somewhat I dislike it somewhat I strongly dislike it I'm not sure

2. Scheme 'B' introduces a network of mountain biking trails throughout Sheraden Park. This trail system could be a unique element that attracts bikers from around the city and even the region. What do you think? (Circle One)

I like it a lot! I like it somewhat I dislike it somewhat I strongly dislike it I'm not sure

3. Scheme 'B' designates the current upper ball field into a single use football field, while using the lower ball field for adult rec league softball events. Do you feel like these are the right uses for the fields?

I like it a lot! I like it somewhat I dislike it somewhat I strongly dislike it I'm not sure

4. What is your overall impression of Scheme 'B'?

I like it a lot! I like it somewhat I dislike it somewhat I strongly dislike it I'm not sure

5. Please leave any additional comments on the back!

Sled riding hills



THANK YOU FOR
YOUR HELP!

SURVEY - SCHEME B: ACTIVE RECREATION

1. A primary feature of Scheme 'B' is a large embankment slide built into the naturally steep slopes of the park. The slide could be a major draw of a Pittsburgh Signature park that brings visitors with children. What do you think? (Circle one)

I like it a lot! I like it somewhat I dislike it somewhat I strongly dislike it I'm not sure

2. Scheme 'B' introduces a network of mountain biking trails throughout Sheraden Park. This trail system could be a unique element that attracts bikers from around the city and even the region. What do you think? (Circle One)

I like it a lot! I like it somewhat I dislike it somewhat I strongly dislike it I'm not sure

3. Scheme 'B' designates the current upper ball field into a single use football field, while using the lower ball field for adult rec league softball events. Do you feel like these are the right uses for the fields?

I like it a lot! I like it somewhat I dislike it somewhat I strongly dislike it I'm not sure

4. What is your overall impression of Scheme 'B'?

I like it a lot! I like it somewhat I dislike it somewhat I strongly dislike it I'm not sure

5. Please leave any additional comments on the back!

See A-B-C.



THANK YOU FOR
YOUR HELP!

SCHEME B: FEEDBACK

Safety on the slide?

Where are the traditional or even better -
an inclusive playground?

I like the addition of the ball fields, but
hope that Shroden community groups would
receive first right to them and not PSL.

Need playgrounds

PLACE TO SLED RIDE IN WINTER

ELECTRICAL OUTLETS AT SHELTER

THIS SCHEME IS MORE FAMILY
ORIENTED AND IS WHAT PEOPLE
IN THE COMMUNITY ARE REALLY
LOOKING FOR.

ALSO YOU PROVIDE FOR BOTH BASEBALL &
FOOTBALL TEAMS

SCHEME 'B'

Dirt Bike + Mountain Bike
Dog Park
Football Field
LIGHTING!!

Sit in shade, near bathrooms, + read a book! ✓

NO DISTURBANCE OF FORESTED LAND TO BUILD A SLIDE -
PUT IN PLAYGROUND AREA. ✓

Boat launches
Bike Trails
Hiking Trails
Dog Park - good location!
Paved bike lane

DOG PARK ^{I like the location in this one}
Hiking / bike trails
Football field maybe
Kajak access
~~The~~ The slide is a great
dream!

STATION 4:

SCHEME C: COMMUNITY GATHERING



SCHEME C: RENDERINGS



CURRENT CONDITION:



COMMUNITY GARDENS & GATHERING SPACE:



SCHEME C SURVEYS

SURVEY - SCHEME C: COMMUNITY GATHERING & EVENTS

1. A major goal of Scheme 'C' is to create spaces that aid in building community and generating revenue for ongoing park events and maintenance. This includes constructing a new community building with various types of rentable spaces for events. What do you think?

I like it a lot! I like it somewhat I dislike it somewhat I strongly dislike it I'm not sure

2. Scheme 'C' introduces a large community garden as well as an amphitheatre for musical performances and events in place of the current upper ball field. This sunny spot could act as a centralized gathering space for the community and a place for neighbors to meet and interact. What do you think?

I like it a lot! I like it somewhat I dislike it somewhat I strongly dislike it I'm not sure

3. Scheme 'C' promotes the idea of multiple streams for revenue generation for the park through 3rd party vendors, such as food trucks, kayak rentals and a high ropes course. Are these appropriate for Sheraden Park?

I like it a lot! I like it somewhat I dislike it somewhat I strongly dislike it I'm not sure

4. What is your overall impression of Scheme 'B'?

I like it a lot! I like it somewhat I dislike it somewhat I strongly dislike it I'm not sure

5. Please leave any additional comments on the back!



THANK YOU FOR
YOUR HELP!

SURVEY - SCHEME C: COMMUNITY GATHERING & EVENTS

1. A major goal of Scheme 'C' is to create spaces that aid in building community and generating revenue for ongoing park events and maintenance. This includes constructing a new community building with various types of rentable spaces for events. What do you think?

I like it a lot! I like it somewhat I dislike it somewhat I strongly dislike it I'm not sure

2. Scheme 'C' introduces a large community garden as well as an amphitheatre for musical performances and events in place of the current upper ball field. This sunny spot could act as a centralized gathering space for the community and a place for neighbors to meet and interact. What do you think?

I like it a lot! I like it somewhat I dislike it somewhat I strongly dislike it I'm not sure

3. Scheme 'C' promotes the idea of multiple streams for revenue generation for the park through 3rd party vendors, such as food trucks, kayak rentals and a high ropes course. Are these appropriate for Sheraden Park?

I like it a lot! I like it somewhat I dislike it somewhat I strongly dislike it I'm not sure

4. What is your overall impression of Scheme 'B'?

I like it a lot! I like it somewhat I dislike it somewhat I strongly dislike it I'm not sure

5. Please leave any additional comments on the back!



THANK YOU FOR
YOUR HELP!

SURVEY - SCHEME C: COMMUNITY GATHERING & EVENTS

1. A major goal of Scheme 'C' is to create spaces that aid in building community and generating revenue for ongoing park events and maintenance. This includes constructing a new community building with various types of rentable spaces for events. What do you think?

I like it a lot! I like it somewhat I dislike it somewhat I strongly dislike it I'm not sure

2. Scheme 'C' introduces a large community garden as well as an amphitheatre for musical performances and events in place of the current upper ball field. This sunny spot could act as a centralized gathering space for the community and a place for neighbors to meet and interact. What do you think?

I like it a lot! I like it somewhat I dislike it somewhat I strongly dislike it I'm not sure

3. Scheme 'C' promotes the idea of multiple streams for revenue generation for the park through 3rd party vendors, such as food trucks, kayak rentals and a high ropes course. Are these appropriate for Sheraden Park?

I like it a lot! I like it somewhat I dislike it somewhat I strongly dislike it I'm not sure

4. What is your overall impression of Scheme 'C'?

I like it a lot! I like it somewhat I dislike it somewhat I strongly dislike it I'm not sure

5. Please leave any additional comments on the back!



THANK YOU FOR
YOUR HELP!

Make bridge large enough for carrying boats

Like the garden, but not sold on whether
amphitheatre would be used over a ball field

Concerned about maintenance of any of these
new additions.

SURVEY - SCHEME C: COMMUNITY GATHERING & EVENTS

1. A major goal of Scheme 'C' is to create spaces that aid in building community and generating revenue for ongoing park events and maintenance. This includes constructing a new community building with various types of rentable spaces for events. What do you think?

I like it a lot! I like it somewhat I dislike it somewhat I strongly dislike it I'm not sure

2. Scheme 'C' introduces a large community garden as well as an amphitheatre for musical performances and events in place of the current upper ball field. This sunny spot could act as a centralized gathering space for the community and a place for neighbors to meet and interact. What do you think?

I like it a lot! I like it somewhat I dislike it somewhat I strongly dislike it I'm not sure

3. Scheme 'C' promotes the idea of multiple streams for revenue generation for the park through 3rd party vendors, such as food trucks, kayak rentals and a high ropes course. Are these appropriate for Sheraden Park?

I like it a lot! I like it somewhat I dislike it somewhat I strongly dislike it I'm not sure

4. What is your overall impression of Scheme 'B'?

I like it a lot! I like it somewhat I dislike it somewhat I strongly dislike it I'm not sure

5. Please leave any additional comments on the back! *I would like to see better use of waterfront*



THANK YOU FOR
YOUR HELP!

SURVEY - SCHEME C: COMMUNITY GATHERING & EVENTS

1. A major goal of Scheme 'C' is to create spaces that aid in building community and generating revenue for ongoing park events and maintenance. This includes constructing a new community building with various types of rentable spaces for events. What do you think?

I like it a lot! I like it somewhat I dislike it somewhat I strongly dislike it I'm not sure

2. Scheme 'C' introduces a large community garden as well as an amphitheatre for musical performances and events in place of the current upper ball field. This sunny spot could act as a centralized gathering space for the community and a place for neighbors to meet and interact. What do you think?

I like it a lot! I like it somewhat I dislike it somewhat I strongly dislike it I'm not sure

3. Scheme 'C' promotes the idea of multiple streams for revenue generation for the park through 3rd party vendors, such as food trucks, kayak rentals and a high ropes course. Are these appropriate for Sheraden Park?

I like it a lot! I like it somewhat I dislike it somewhat I strongly dislike it I'm not sure

4. What is your overall impression of Scheme 'B'?

I like it a lot! I like it somewhat I dislike it somewhat I strongly dislike it I'm not sure

5. Please leave any additional comments on the back! *Watch revenue-generating*



THANK YOU FOR
YOUR HELP!

SURVEY - SCHEME C: COMMUNITY GATHERING & EVENTS

1. A major goal of Scheme 'C' is to create spaces that aid in building community and generating revenue for ongoing park events and maintenance. This includes constructing a new community building with various types of rentable spaces for events. What do you think?

I like it a lot! I like it somewhat I dislike it somewhat I strongly dislike it I'm not sure

2. Scheme 'C' introduces a large community garden as well as an amphitheatre for musical performances and events in place of the current upper ball field. This sunny spot could act as a centralized gathering space for the community and a place for neighbors to meet and interact. What do you think?

I like it a lot! I like it somewhat I dislike it somewhat I strongly dislike it I'm not sure

3. Scheme 'C' promotes the idea of multiple streams for revenue generation for the park through 3rd party vendors, such as food trucks, kayak rentals and a high ropes course. Are these appropriate for Sheraden Park?

I like it a lot! I like it somewhat I dislike it somewhat I strongly dislike it I'm not sure

4. What is your overall impression of Scheme 'B'?

I like it a lot! I like it somewhat I dislike it somewhat I strongly dislike it I'm not sure

5. Please leave any additional comments on the back! *A place to congregate, enter fair, etc. are great but I'd limit what you charge for.*



THANK YOU FOR
YOUR HELP!

SURVEY - SCHEME C: COMMUNITY GATHERING & EVENTS

1. A major goal of Scheme 'C' is to create spaces that aid in building community and generating revenue for ongoing park events and maintenance. This includes constructing a new community building with various types of rentable spaces for events. What do you think?

I like it a lot! I like it somewhat I dislike it somewhat I strongly dislike it I'm not sure

2. Scheme 'C' introduces a large community garden as well as an amphitheatre for musical performances and events in place of the current upper ball field. This sunny spot could act as a centralized gathering space for the community and a place for neighbors to meet and interact. What do you think? *There is already a community garden in progress. This would be a better use of space.*

I like it a lot! I like it somewhat I dislike it somewhat I strongly dislike it I'm not sure

3. Scheme 'C' promotes the idea of multiple streams for revenue generation for the park through 3rd party vendors, such as food trucks, kayak rentals and a high ropes course. Are these appropriate for Sheraden Park? *The only issue with this is Sheraden is already a very economically depressed area.*

I like it a lot! I like it somewhat I dislike it somewhat I strongly dislike it I'm not sure

4. What is your overall impression of Scheme 'B'?

I like it a lot! I like it somewhat I dislike it somewhat I strongly dislike it I'm not sure

5. Please leave any additional comments on the back! *See Back*



THANK YOU FOR
YOUR HELP!

SCHEME C: FEEDBACK

This scheme leaves a lot to be desired.

Need playgrounds.

AN UPDATED COMMUNITY BUDGET
IS PERTINENT TO WHICHEVER
SCHEME IS SELECTED

CONCERN CAR ACCESS TO McKEES ROCKS...
RE: DRUG DEALERS OR ANY ILLEGAL
ACTIVITIES.

KIWAUIS INTERNATIONAL OFFERS GRANTS THROUGH LANDSCAPE STRUCTURES,
A PLAYGROUND EQUIPMENT COMPANY (AND STRATEGIC PARTNER) OF UPWARDS
OF \$25,000 FOR NEW PLAYGROUNDS.

THIS WOULD BE SOMETHING OUR CLUB COULD PURSUE TO
ASSIST WITH THE NEW PARK

SCHEME 'C'

NO

- Some camping already happens in Park
- Reach out to other municipalities that have accomplished some of these big ideas

- Community garden? Aging well received
- Bridge to align with road/dike across creek?
- No camping. Safety issues

- Wetland Boardwalk great idea

- Camping No.

- Dog park nice, but not as important

- Zip line. Review provides options

- Football field probably wouldn't get used. Granway Pub nearby

- No parking at Mymynyl. Playground gets used

- Horse riding in Waterfront Parcel

- Tree house Air BnB?

- Campfire for BOY SCOUTS & girl Scouts

- Swim classes

- Current Atlantic Community garden

Dog park NOT by the creek

Need compost areas to go with community garden.

Flexible use boat launch area

- don't like driving park near the creek

- Dog park not in floodplain but closer to homes like in SW part of park

- Flexible-use boat launch fishing etc.

- Rentable pavilion for picnic/day etc.

- Benches overlooking dock/creek