

HISTORIC RESOURCE SURVEY

Manchester Neighborhood,
Pittsburgh, Pennsylvania

This project is supported by a grant from the Pennsylvania Historical and Museum Commission's Keystone Historic Preservation Grant, a program funded by the Commonwealth of Pennsylvania



PRACTICAL
PRESERVATION



Who we are



**John and Sandra
Practical
Preservation**



**Jeff Raykes
Stuart Group**



**Eden Zenisek
Stuart Group**



**Donovan Daniel
Stuart Group**

Points of Discussion

Who We Are

Why Manchester?

What is the NRHP?

Methodology

How to Help

Next Steps



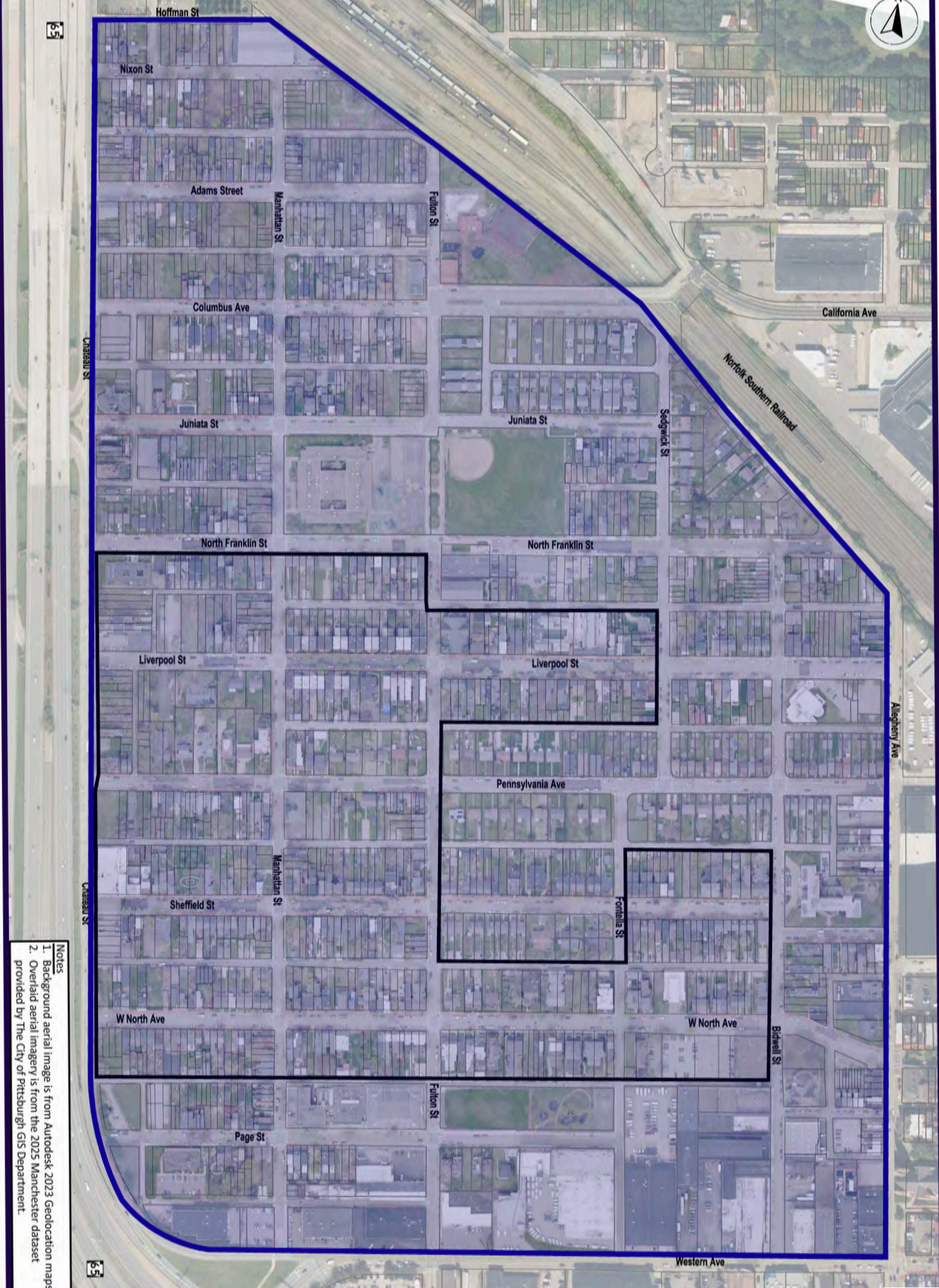
Why Study Manchester?



EXISTING HISTORIC DISTRICT

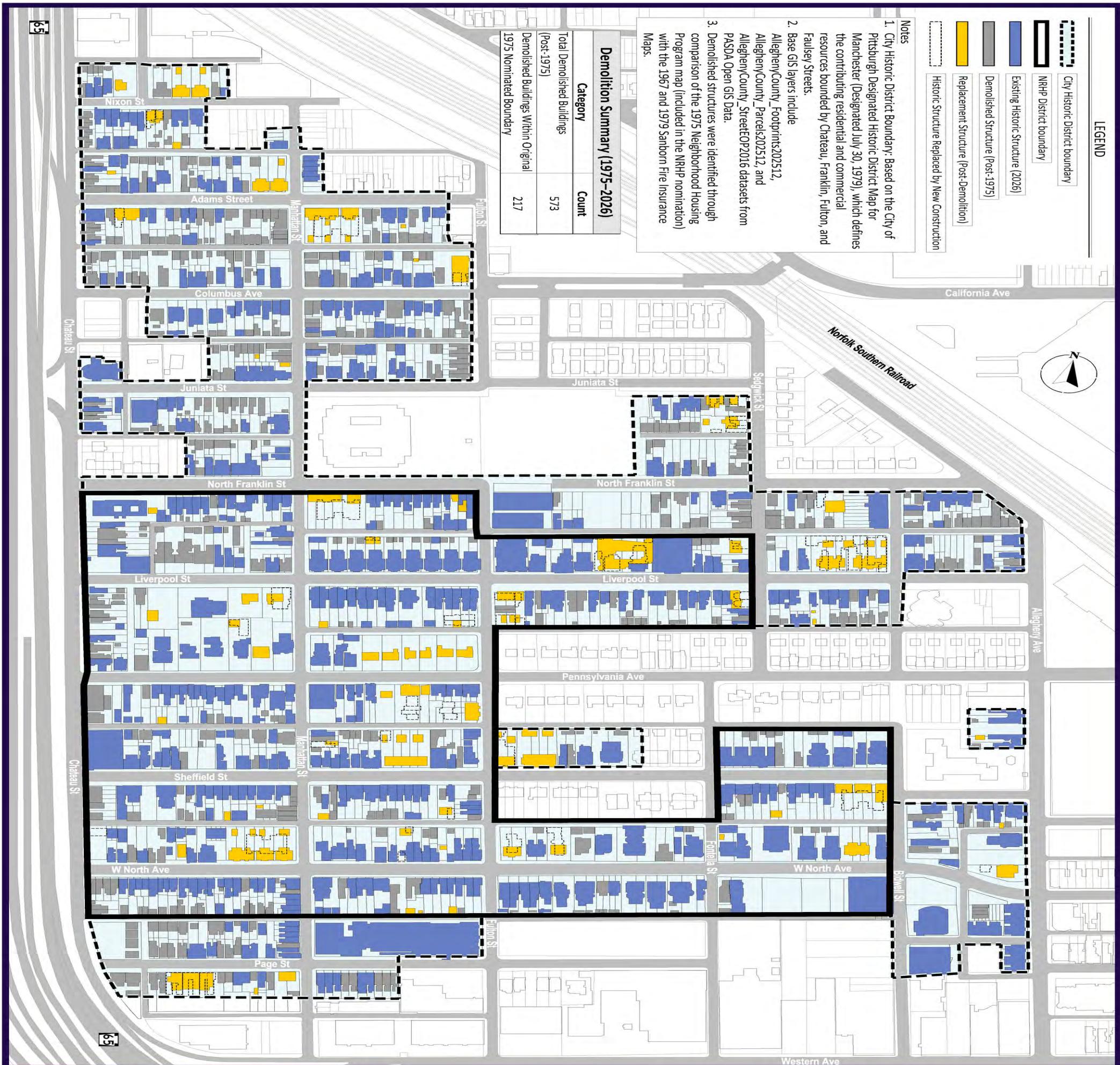


UPDATED STUDY AREA



Notes
1. Background aerial image is from Autodesk 2023 Geolocation maps
2. Overlaid aerial imagery is from the 2025 Manchester dataset provided by The City of Pittsburgh GIS Department.

DEMOLISHED RESOURCES



Demolition Summary (1975-2026)	
Category	Count
Total Demolished Buildings (Post-1975)	573
Demolished buildings Within Original 1975 Nominated Boundary	217

- Notes**
1. City Historic District Boundary: Based on the City of Pittsburgh Designated Historic District Map for Manchester (Designated July 30, 1979), which defines the contributing residential and commercial resources bounded by Chateau, Franklin, Fulton, and Fausley Streets.
 2. Base GIS layers include AlleghenyCounty_Footprints202512, AlleghenyCounty_ParcelS202512, and AlleghenyCounty_StreetEOP2016 datasets from PASDA Open GIS Data.
 3. Demolished structures were identified through comparison of the 1975 Neighborhood Housing Program map (Included in the NRHP nomination) with the 1967 and 1979 Sanborn Fire Insurance Maps.

LEGEND

- City Historic District boundary
- NRHP District boundary
- Existing Historic Structure (2026)
- Demolished Structure (Post-1975)
- Replacement Structure (Post-Demolition)
- Historic Structure Replaced by New Construction

Scale: Not to scale

Sheet: **APPX A**

DATE: 09/14/26
 ISSUED FOR:
 PROJECT NO:
 DRAWN BY: JCP
 CHECKED BY:
 APPROVED BY:
 TENSION # DATE:

Manchester Historic District Update

Pittsburgh, Allegheny County, PA

Demolished Buildings Exhibit

PRACTICAL PRESERVATION

What is the NRHP?

The National Register of Historic Places is the official list of the nation's historic places worthy of preservation.



How do we qualify?



Resources must be generally 50 years old, retain historic integrity and possess significance through at least one of these criteria:

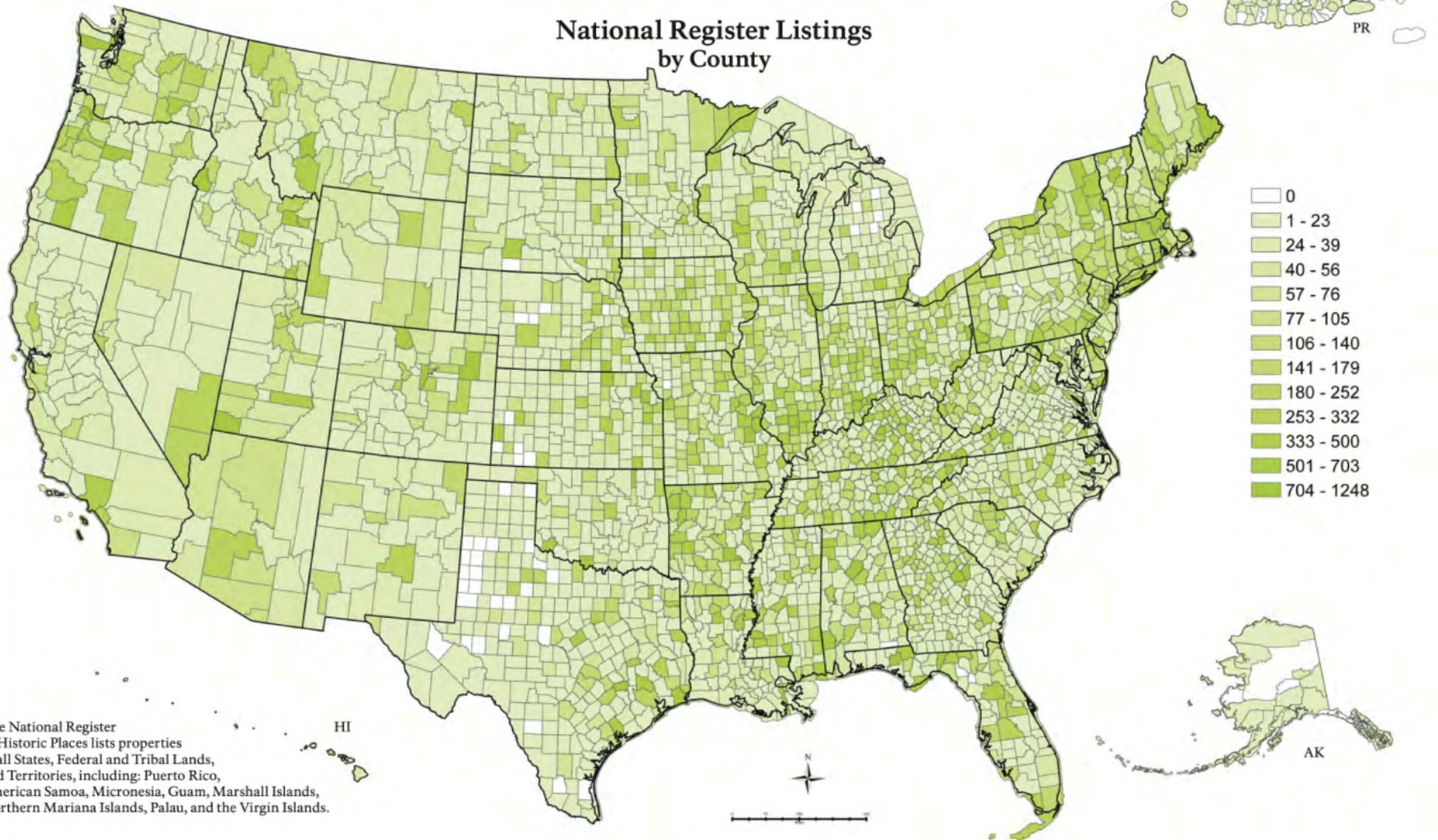
Criterion A: Event

Criterion B: Person

**Criterion C: Design/
Construction**

Criterion D: Data Potential

National Register Listings by County



The National Register of Historic Places lists properties in all States, Federal and Tribal Lands, and Territories, including: Puerto Rico, American Samoa, Micronesia, Guam, Marshall Islands, Northern Mariana Islands, Palau, and the Virgin Islands.

Federal vs. Local Distinction

Federal (NRHP)

- Managed by the National Park Service
- Honorary acknowledgement of historic significance
- No restrictions on demolitions and exterior changes by private property owners using private funds

Recognizing historic places.

Local

- Designated by City Council
- Exterior changes and demolitions reviewed by Historic Review Commission
- Public Process
- Locally developed guidelines

Protecting historic places.

Methodology



Survey



Research



Write



Determination of Eligibility



Prepare Nomination



Public Comment



State Review Board



National Park Service



How you can help.

Share your story.

**Share why Manchester is
important to you.**

Let your voice be heard.

Our Outreach + Engagement Process

Outreach → one-way communication intended to build awareness (e.g. flyers, news release).

Engagement → two-way interaction that invites dialogue and feedback (e.g. listening sessions, surveys, interviews).

Why Community Participation Is Important: The Manchester Historic District Update is about more than buildings. It is an opportunity to document the people, experiences, organizations, and community leadership that shaped Manchester during the Civil Rights era and beyond—*many of which are not found in archives or official records.*

Outreach + Engagement Goals:

- ✓ Build awareness of the Historic District Update
- ✓ Hear from a broad range of community voices
- ✓ Ensure local knowledge informs the historic research
- ✓ Create a more complete, accurate, and meaningful story of Manchester



Credit: Pittsburgh City Photographer Collection, 1901-2002

Up Next: Community Listening Sessions

What is a listening session?

An informal opportunity for residents, former residents, property owners, community leaders, and neighborhood organizations to share stories, memories, and knowledge about Manchester.

What will be discussed?

- Civil Rights-era experiences
- Community organizing and leadership
- Important people and places
- Neighborhood institutions and churches
- Urban renewal and displacement
- Preservation and community development efforts
- Historic photos, documents, and personal memories



What Could a Listening Session Look Like?

Example Session: "Manchester Stories in the Park"

Option A - One day, two times

- Morning Session (9:00–11:00 AM)
- Evening Session (5:00–7:00 PM)

Option B - Two days, two times

- One morning session on a weekday
- One evening session on a different day

Listening methods: Group listening sessions, individual interviews, photo / document review, Walk & Talk activity (key site identification), and focused listening activities

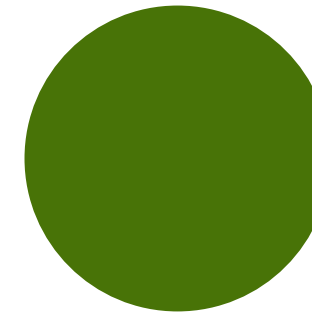


GOAL: To collect local knowledge, stories, photographs, documents, memories, and perspectives from community members in an accessible format. Your experiences help explain the gaps that appear in archives but are critical to understanding **Manchester's history**.

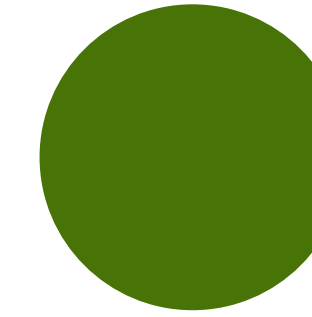
NEXT STEPS



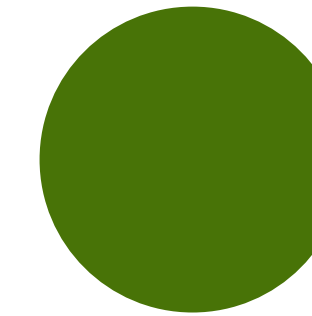
Contact Us



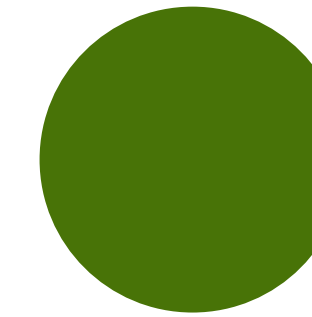
Engage PGH



Sandra Scaffidi
Historian



Jeff Raykes
Outreach and Engagement



Katie Reed
City of Pittsburgh Project Manager

The screenshot shows the City of Pittsburgh website for the Manchester National Register Update project. The header includes the City of Pittsburgh logo and navigation links for Home, Archived Projects, Office of Community Affairs, English, and Log In / Join. The main content area features a blue banner with the title "Manchester National Register Update" and a sub-header "Updating the context for Manchester's National Register listing as a historic district, with a focus on Manchester's Civil Rights history." Below the banner is a "Follow" button and a photograph of a brick building with green window frames. The page content is organized into sections: "About this project" (describing the project's goal and funding), "Supporting information" (with a PDF link for "Manchester National Register Update Recommendations"), "Share Your Stories!" (a call to action for residents and community members), and "Key Dates" (listing two community meetings: one on Wednesday 17 June 2026 and another on Wednesday 15 July 2026).



Questions?

THANK YOU

