

BEECHVIEW

Percent For Art
PUBLIC ART PROJECT

• *Hearing and Action* • April 2026 •



Front View



Left side, where public art will be placed.

• *Implementation and Installation, Fall 2026* •

LOCATION: Beechview Healthy Active Living Community Center
(a city-owned property visible by car and T-Line).



PUBLIC CALL FOR ARTISTS – BEECHVIEW

Follow

Request for Proposal City Planning

Project ID: 2024-RFP-252

Release Date: Friday, August 9, 2024 · Due Date: Monday, September 9, 2024 3:00pm

Posted Friday, August 9, 2024 12:00pm

All dates & times in Eastern Time



CLOSED

Awarded

Overview

Project Documents

Downloads

Addenda & Notices

Question & Answer

Followers

1. Introduction

2. Instructions to Bidders

3. Scope of Work

4. Proposal Format Requirements

5. Evaluation Phases

6. Equal Opportunity Review Commission Terms

7. Award and Contract

8. General Terms & Conditions

9. Miscellaneous Requirements

10. Vendor Questionnaire

11. Attachments

View All Sections

3. Scope of Work

3.1. The location and broad themes to consider

Beechview is a neighborhood situated in the steep southern hills of Pittsburgh. It is a family-friendly neighborhood that prides itself on its diversity, culture, and community. It is known for the trolley line running through it, connecting the urban center of the city to the residential neighborhoods and towns to the south.

The demographics of Beechview reflects a wide multiculturalism, with residents whose families have lived in the area for many years living alongside those who have moved there more recently, including a growing Latinx population. People of all ages make this neighborhood home.

Initial feedback from the Beechview community has indicated that a high priority is creating/fostering a sense of unity within the diversity of the neighborhood. Potential cues for an artist to explore include:

- Artwork that brings people together and creates community conversations
- Artwork that reveals the heart, integrity, and history of the community
- Artwork that honors the diverse populations living in Beechview
- Artwork that is family-friendly

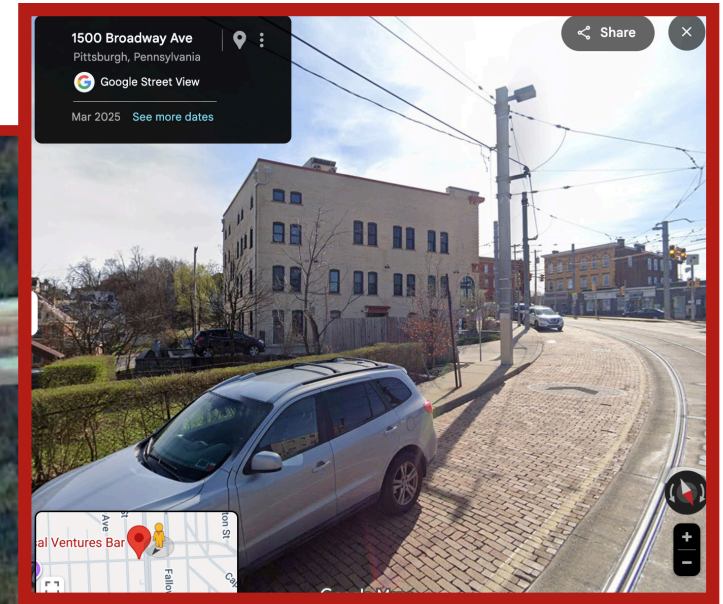
The selected artist will be expected to engage with the community to determine the scope of their project, its themes, and its location(s). Artists applying for this project should have a focus on working with and for communities in the creation of art.

Locations of artwork within Beechview will be determined following community engagement and consultation with city staff. All locations subject to approval of the Department of Public Works and the Department of Mobility and Infrastructure.

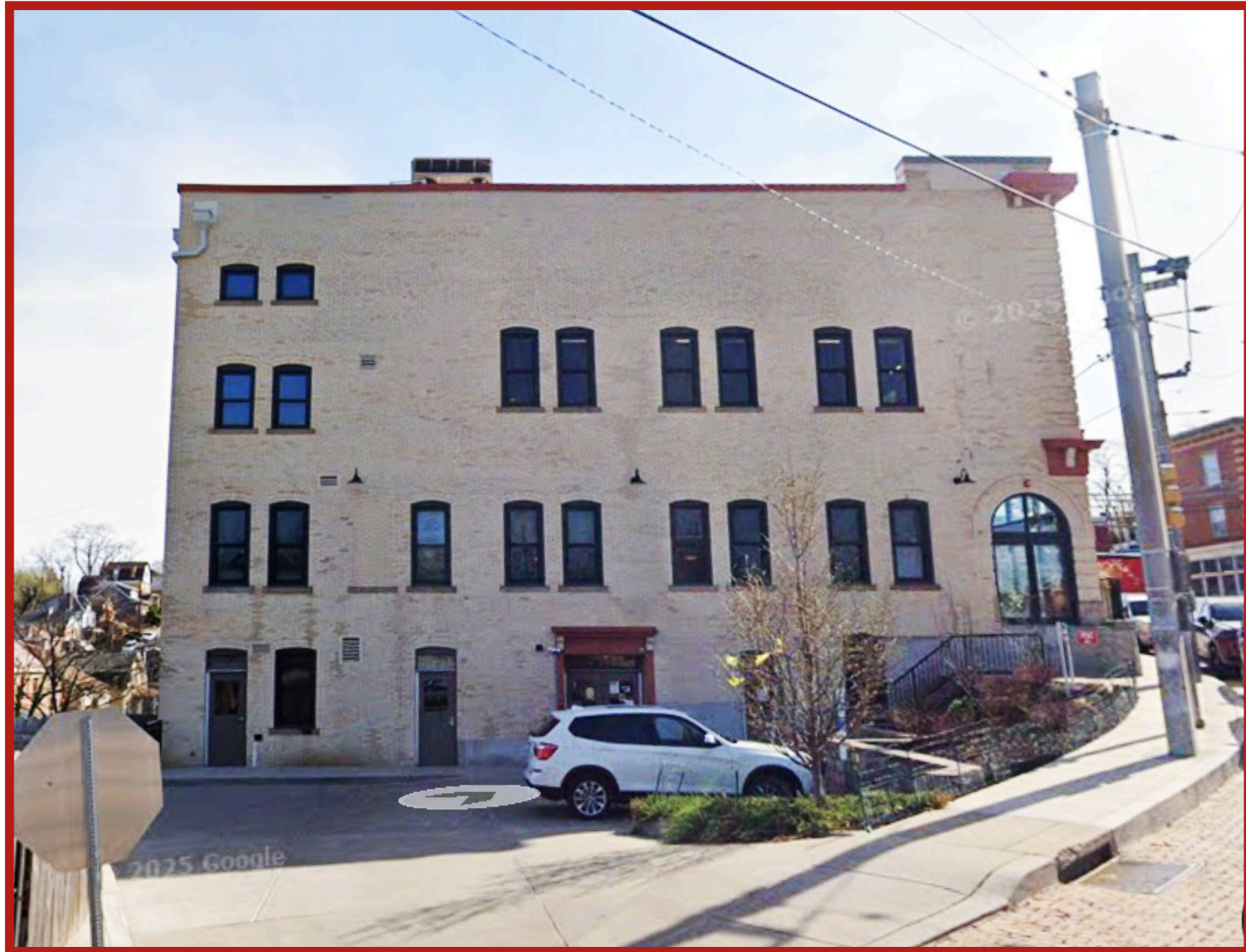
3.3. Budget

The selected applicant will receive a total budget of \$90,000. This amount includes all aspects of project development and installation, including engagement, concept and design development, project administration, insurance, travel, permitting (including any necessary engineered drawings), fabrication (including labor), and installation costs. The selected applicant is responsible for ensuring that the project remains within the approved budget. Up to 20% of the total budget may be allocated as an artist fee; the remaining 80% must be allocated to itemized expenses, which can include hourly rates and other expenses for both the selected artist and any subcontractors.

Because this Percent For Art project is utilizing ARPA funding, the entire project must be complete (artwork installed; required completion documents and final invoice submitted) by November 1, 2026.



1555 Broadway Ave Suite 101, Pittsburgh, PA 15216



**Left side of building where public art will be placed, visible from the T-Line.
Parking lot accessible for installation.**

What Is Unique About Beechview?

- T-line, very close to downtown
- Steps, hills
- Steepest street (Canton Ave.)
- Beech leaves
- Boilermakers / working class roots
- Diversity — integrated community, melting pot, mixture of cultures, immigrants
- Generations of families
- Farms — agricultural start / vineyard
- History — miners, farmers, mills, bookies
- Diverse religious groups: synagogue, Turkish, Muslim, Mormonism,
- Connectedness / connectivity

Community members expressed a strong desire for a public artwork that strengthens Beechview's identity and serves as a unifying landmark. They emphasized the neighborhood's defining features—its steep hills, long staircases, T-line connection, working-class roots, and diverse cultural and religious communities. Beech leaves were highlighted as important symbols, along with community traditions and shared spaces. Above all, residents want an artwork that embodies unity and vibrancy while reflecting Beechview's past, present, and evolving identity.



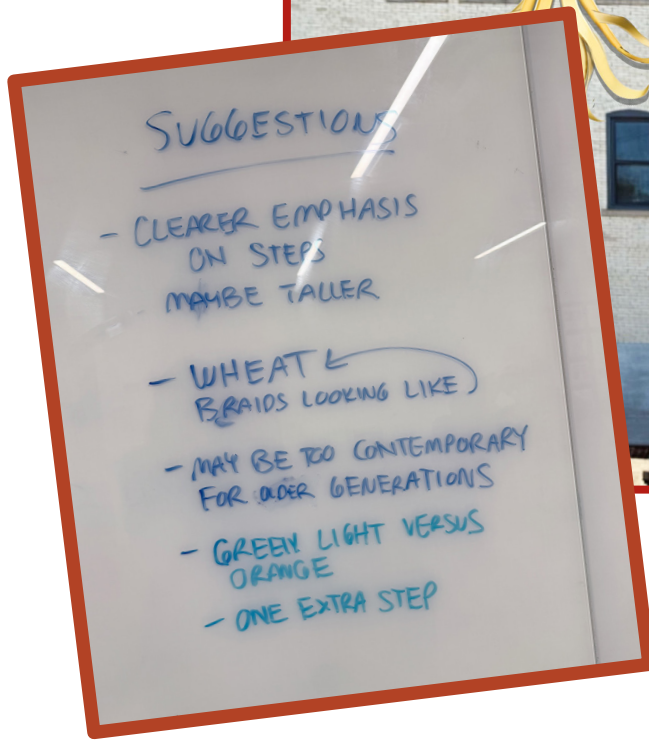
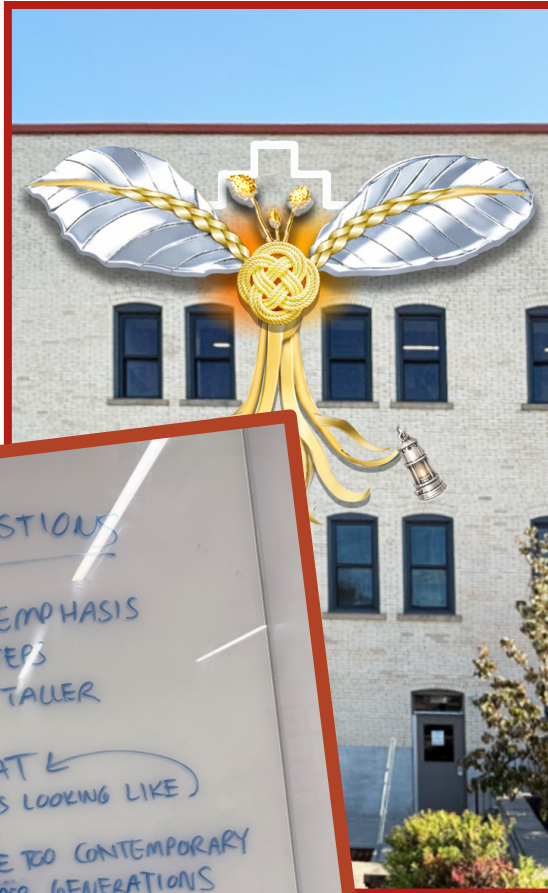
INITIAL STATEMENT: With an over arching concept of unity, I've worked to include the community priorities represented by symbols, while maintaining a strong focal point that can be seen clearly by car and foot. Community participants will help to decide on the symbols used.

DESIGN CHALLENGES: Large amount of storytelling created busy design. Metal finishes weren't warm enough and were perceived as too modern. Community wanted trolley represented, the sacred heart was controversial and coal miner davey lamp was reading as a beer stein.

COMMUNITY DESIGN REVIEW (1) (third overall community meeting)

Key Takeaways

- Design appeared too modern.
- Layout of things looked religious.
- Beech nut was hard to read.
- Did not favor graphic line representation of steps, nor placement of steps.
- Braided stems could be confused as wheat.
- Trolley needed to be included.
- Davey lamp icon could be read as beer stein from a distance.



COMMUNITY DESIGN REVIEW (2) *(fourth overall community meeting)*



Key Takeaways

- Attendees seemed to be very satisfied with the changes in layout, color, and symbolism.
- Can a globe be included to represent current diversity?
- Can the churches be represented?
- Can additional farming be represented?
- Can the name “Beechview” be included?
- The room was split on being in favor of the new knot design: a few thought celtic was appropriate, others disagreed. It was also suggested that the globe could be used in place of the knot.





- A globe is positioned as the focal point, with the ribbon that encircles the design coming together to form a knot behind it. This is meant to act as the central symbol of unity and interconnection within the design.
- Flanking the globe are beech leaves, the namesake of Beechview. This is a literal and symbolic nod to the land, promoting place and identity. The leaves also pay homage to green spaces within Beechview.
- A coal miner hat points towards the past, the history, and the iconic trolley points towards the future. Both will have lit headlights. These icons sit atop stair motifs which are being used to represent Beechview's signature steep hills and public stairways. They're also a symbol of perseverance and perspective.
- Circle or wreath motif represents togetherness, a universal symbol of unity. Ribbons coming from the "knot" twist into a braid, furthering unity concept. Beechview's early Scots-Irish and English settlers brought craft traditions of knotwork and weaving. Braiding is also a universal practice found across cultures - in Appalachian rope craft, Latin American hair braiding and textiles, Eastern European thread-wrapping, and African diasporic traditions.



- Grape vines weave their way thru the ribbons as the agricultural past of Beechview, where hillside farms and vineyards covered the landscape.
- The hanging “banners” are inspired by Mexican papel picado, the decorative cut-paper banners often strung across streets during celebrations.

Tree of life: growth, resilience, and deep-rooted connection—reflecting both the multigenerational history and the shared support of the community.

Sun and Moon: passage of time and the rhythm of daily life.

Eight-Pointed Star: cross-cultural symbol that shows up in Eastern European folk art as protection, continuity; Islamic geometric design as balance, order, infinity; Ancient Mesopotamia as power, light; General decorative arts as guidance, radiance, unity.

- A TIME CAPSULE will be created with the intent to be opened at a later date. This adds a participatory component and invites community members to contribute handwritten notes. I’d like it be a replica of the knot or globe.



Powder-Coated Steel Construction

The artwork will be fabricated from CNC-cut steel and metal formed pieces, with select areas utilizing layered steel.

High-Performance, Exterior-Grade Powder Coating

The artwork will be powder coated to provide exceptional durability, corrosion resistance, and color stability, ensuring the piece maintains its appearance under prolonged exposure to weather, UV light, and environmental wear. The coating system will be specified to meet or exceed a 10-year lifespan with minimal maintenance.

Architectural-grade metallic powder coat, copper tone (RAL Effect) or similar, with subtle reflectivity.

RAL 410-1

RAL 410-2

RAL 410-6

Integrated LED Lighting System

Will utilize exterior-rated, low-voltage LED modules with a minimum rated lifespan of 50,000 hours. All components, including waterproof drivers and sealed connections, will be specified for outdoor use and designed for durability.

The artwork is designed for long-term outdoor durability and minimal maintenance. Materials and systems have been selected to withstand environmental exposure.

Routine Maintenance (1–2 times per year)

Visual inspection from ground level to assess overall condition

Elevated Access Maintenance (as needed)

Due to the height of the installation (4 stories), any physical maintenance will be performed using standard professional access equipment (lift or scaffolding)

Elevated access is anticipated only for periodic inspection, cleaning, or lighting maintenance. Cleaning performed as needed using low-pressure water and mild detergent.

Periodic inspection (every 5 years or as needed)

Inspect mounting hardware and structural connections for stability. Check powder-coated surfaces for signs of wear, chipping, or corrosion. Inspect lighting system, including LED modules, wiring, and connections, to ensure proper function.

Lighting Maintenance

LED system is rated for 50,000+ hours of use. Drivers and electrical components will be installed in accessible locations where feasible. Any failed components can be replaced individually using lift access, without removing the artwork.

Long-Term Care (10+ years)

Reassess overall finish condition; powder-coated steel is expected to maintain integrity with minimal degradation. Touch-up or recoating only if significant wear or damage occurs.

General Notes

High-pressure washing is not required and will be avoided to protect the finish and lighting components. Maintenance procedures align with standard practices for façade-mounted architectural elements. The system is designed to meet or exceed a 10-year lifespan with routine care.



As part of the project, a **time capsule** will be created in the form of a small-scale replica of the central knot, extending the artwork's theme of connection into a living, community-driven element.

Two community meetings will guide this process. The first meeting will invite participants to collectively determine a question posed to the broader Beechview community. This question will reflect shared values, experiences, or hopes for the neighborhood.

A second meeting will provide an opportunity for residents to gather and place their contributions into the time capsule, answering the chosen question. The community will also be invited to help determine the placement and duration of the time capsule, allowing the project to remain open-ended and responsive to neighborhood input.