



DISMAS CHARITIES, INC.

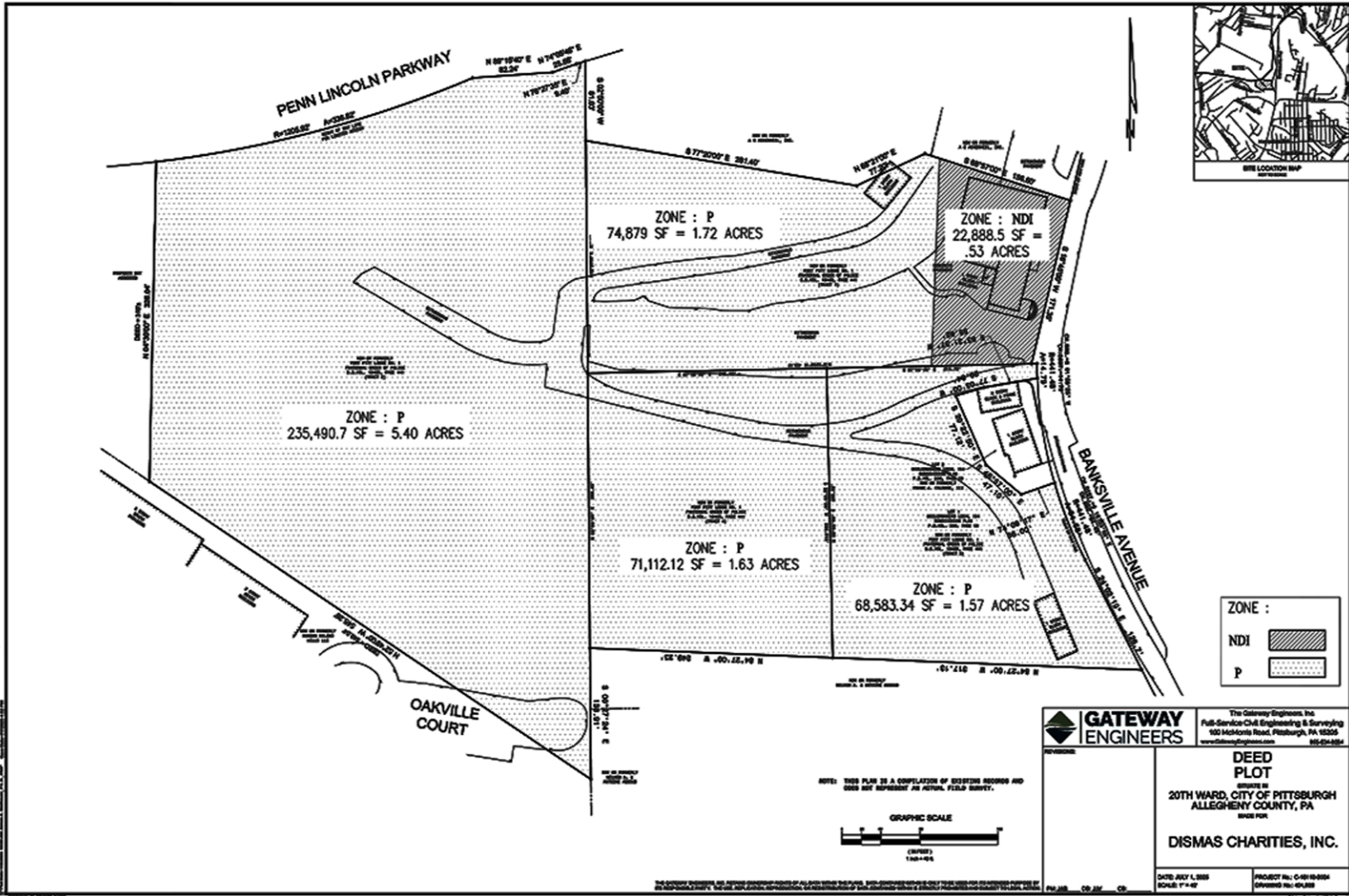
Healing the Human Spirit



CONTACT:
JAKE VOGEL
jvogel@hannacre.com
412 290 2621

SANDY CIKOVIC
scikovic@hannacre.com
412 261 2200

HANNA COMMERCIAL REAL ESTATE
11 STANWIX ST., SUITE 1024
PITTSBURGH, PA 15222
HANNACRE.COM



Parr, Ken (Corporate)

Subject: Existing Building Photo



RE: Dismas Charities Pittsburgh
1070 Banksville Avenue
Pittsburgh PA 15216



Parr, Ken (Corporate)

Subject:

Existing Site Photo



RE: Dismas Charities Pittsburgh
1070 Banksville Avenue
Pittsburgh PA 15216



Parr, Ken (Corporate)

Subject:

Proposed Elevation Sketch



RE: Dismas Charities Pittsburgh
1070 Banksville Avenue
Pittsburgh PA 15216





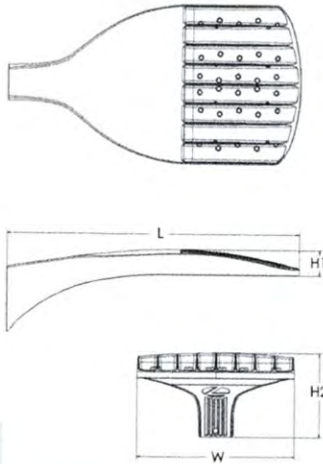
D-Series Size 0 LED Area Luminaire



Catalog Number
Notes
Type

Specifications

EPA:	0.44 ft ² (0.04 m ²)
Length:	26.18" (66.5 cm)
Width:	14.06" (35.7 cm)
Height H1:	2.26" (5.7 cm)
Height H2:	7.46" (18.9 cm)
Weight:	23 lbs (10.4 kg)



ds Design Select options indicated by this color background.

Introduction

The modern styling of the D-Series features a highly refined aesthetic that blends seamlessly with its environment. The D-Series offers the benefits of the latest in LED technology into a high performance, high efficacy, long-life luminaire.

The photometric performance results in sites with excellent uniformity, greater pole spacing and lower power density. D-Series outstanding photometry aids in reducing the number of poles required in area lighting applications, with typical energy savings of 70% and expected service life of over 100,000 hours.



Items marked by a shaded background qualify for the Design Select program and ship in 15 days or less. To learn more about Design Select, visit www.acuitybrands.com/designselect. *See ordering tree for details

Ordering Information

EXAMPLE: DSX0 LED P6 40K 70CRI T3M MVOLT SPA NLTAIR2 PIRHN DDBXD

DSX0 LED

Series	LEDs	Color temperature ¹	Color Rendering Index ²	Distribution	Voltage	Mounting
DSX0 LED	Forward optics	(this section 70CRI only)				
	P1 P5	30K 3000K	70CRI	AFR Automotive front row	TSM Type V medium	MVOLT (120V-277V) ⁴
	P2 P6	40K 4000K	70CRI	T1S Type I short	TSLG Type V low glare	HVOLT (347V-480V) ^{5,6}
	P3 P7	50K 5000K	70CRI	T2M Type II medium	TSW Type V wide	XVOLT (277V-480V) ^{7,8}
	P4			T3M Type III medium	BLC3 Type III backlight control ³	120 ^{16,24}
	Rotated optics	27K 2700K	80CRI	T3LG Type III low glare ³	BLC4 Type IV backlight control ³	208 ^{16,24}
	P10 ¹ P12 ¹	30K 3000K	80CRI	T4M Type IV medium	LCCO Left corner cutoff ³	240 ^{16,24}
	P11 ¹ P13 ¹	35K 3500K	80CRI	T4LG Type IV low glare ³	RCCO Right corner cutoff ³	277 ^{16,24}
		40K 4000K	80CRI	TFTM Forward throw medium		347 ^{16,24}
		50K 5000K	80CRI			480 ^{16,24}
						Shipped included
						SPA Square pole mounting (#8 drilling, 3.5" min. SQ pole)
						RPA Round pole mounting (#8 drilling, 3" min. RND pole)
						SPAS Square pole mounting (#5 drilling, 3" min. SQ pole) ⁹
						RPAS Round pole mounting (#5 drilling, 3" min. RND pole) ⁹
						SPA8N Square narrow pole mounting (#8 drilling, 3" min. SQ pole)
						WBA Wall bracket ¹⁰
						MA Mast arm adapter (mounts on 2 3/8" OD horizontal tenon)

Control options	Other options	Finish (required)
Shipped installed	Shipped installed	DDBXD Dark Bronze
NLTAIR2 PIRHN nLight AIR gen 2 enabled with bi-level motion / ambient sensor, 8-40' mounting height, ambient sensor enabled at 2fc ^{11,12,18,19}	HS Houseside shield (black finish standard) ²⁰	DBLXD Black
PIR High/low, motion/ambient sensor, 8-40' mounting height, ambient sensor enabled at 2fc ^{13,18,19}	L90 Left rotated optics ¹	DNAXD Natural Aluminum
PER NEMA twist-lock receptacle only (controls ordered separate) ¹⁴	R90 Right rotated optics ¹	DWHXD White
PER5 Five-pin receptacle only (controls ordered separate) ^{14,19}	CCE Coastal Construction ²¹	DBBTXD Textured dark bronze
PER7 Seven-pin receptacle only (controls ordered separate) ^{14,19}	HA 50°C ambient operation ²²	DBLTXD Textured black
FAO Field adjustable output ^{15,19}	BAA Buy America(n) Act and/or Build America Buy America Qualified	DNATXD Textured natural aluminum
BL30 Bi-level switched dimming, 30% ^{16,19}	SF Single fuse (120, 277, 347V) ²⁴	DWHGXD Textured white
BL50 Bi-level switched dimming, 50% ^{16,19}	DF Double fuse (208, 240, 480V) ²⁴	
DMG 0-10v dimming wires pulled outside fixture (for use with an external control, ordered separately) ¹⁷	Shipped separately	
	EGSR External Glare Shield (reversible, field install required, matches housing finish)	
	BSDB Bird Spikes (field install required)	

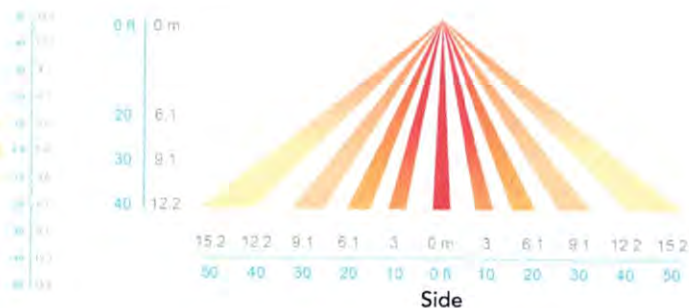


nLight Sensor Coverage Pattern

NLTAIR2 PIRHN



Top



Side

FEATURES & SPECIFICATIONS

INTENDED USE

The sleek design of the D-Series Size 0 reflects the embedded high performance LED technology. It is ideal for many commercial and municipal applications, such as parking lots, plazas, campuses, and pedestrian areas.

CONSTRUCTION

Single-piece die-cast aluminum housing has integral heat sink fins to optimize thermal management through conductive and convective cooling. Modular design allows for ease of maintenance and future light engine upgrades. The LED driver is mounted in direct contact with the casting to promote low operating temperature and long life. Housing driver compartment is completely sealed against moisture and environmental contaminants (IP66). Vibration rated per ANSI C136.31 for 3G. Low EPA (0.44 ft²) for optimized pole wind loading.

FINISH

Exterior parts are protected by a zinc-infused Super Durable TGIC thermoset powder coat finish that provides superior resistance to corrosion and weathering. A tightly controlled multi-stage process ensures a minimum 3 mils thickness for a finish that can withstand extreme climate changes without cracking or peeling. Available in both textured and non-textured finishes.

COASTAL CONSTRUCTION (CCE)

Optional corrosion resistant construction is engineered with added corrosion protection in materials and/or pre-treatment of base material under super durable paint. Provides additional corrosion protection for applications near coastal areas. Finish is salt spray tested to over 5,000 hours per ASTM B117 with scribe rating of 10. Additional lead-times may apply.

OPTICS

Precision-molded proprietary silicone lenses are engineered for superior area lighting distribution, uniformity, and pole spacing. Light engines are available in 3000 K, 4000 K or 5000 K (70 CRI) configurations. 80CRI configurations are also available. The D-Series Size 0 has zero uplight and qualifies as a Nighttime Friendly™ product, meaning it is consistent with the LEED® and Green Globes™ criteria for eliminating wasteful uplight.

ELECTRICAL

Light engine(s) configurations consist of high-efficacy LEDs mounted to metal-core circuit boards to maximize heat dissipation and promote long life (up to L80/100,000 hours at 25°C). Class 1 electronic drivers are designed to have a power factor >90%, THD <20%, and an expected life of 100,000 hours with <1% failure rate. Easily serviceable 10kV surge protection device meets a minimum Category C Low operation (per ANSI/IEEE C62.41.2).

STANDARD CONTROLS

The DSX0 LED area luminaire has a number of control options. DSX Size 0, comes standard with 0-10V dimming driver. Dusk to dawn controls can be utilized via optional NEMA twist-lock photocell receptacles. PIR integrated motion sensor with on-board photocell feature field-adjustable programming and are suitable for mounting heights up to 40 feet. Control option BL features a bi-level device that allows a second control circuit to switch all light engines to either 30% or 50% light output.

nLIGHT AIR CONTROLS

The DSX0 LED area luminaire is also available with nLight® AIR for the ultimate in wireless control. This powerful controls platform provides out-of-the-box basic motion sensing and photocontrol functionality and is suitable for mounting heights up to 40 feet. Once commissioned using a smartphone and the easy-to-use CLAIRITY app, nLight AIR equipped luminaires can be grouped, resulting in motion sensor and photocell group response without the need for additional equipment. Scheduled dimming with motion sensor over-ride can be achieved when used with the nLight Eclipse. Additional information about nLight Air can be found [here](#).

INSTALLATION

Integral mounting arm allows for fast mounting using Lithonia standard #8 drilling and accommodates pole drilling's from 2.41 to 3.12" on center. The standard "SPA" option for square poles and the "RPA" option for round poles use the #8 drilling. For #5 pole drillings, use SPA5 or RPA5. Additional mountings are available including a wall bracket (WBA) and mast arm (MA) option that allows luminaire attachment to a 2 3/8" horizontal mast arm.

LISTINGS

UL listed to meet U.S. and Canadian standards. UL Listed for wet locations. Light engines are IP66 rated; luminaire is IP66 rated. Rated for -40°C minimum ambient.

DesignLights Consortium® (DLC) Premium qualified product and DLC qualified product. Not all versions of this product may be DLC Premium qualified or DLC qualified. Please check the DLC Qualified Products List at www.designlights.org/QPL to confirm which versions are qualified.

International Dark-Sky Association (IDA) Fixture Seal of Approval (FSA) is available for all products on this page utilizing 3000K color temperature only.

GOVERNMENT PROCUREMENT

BAA – Buy America(n) Act: Product with the BAA option qualifies as a domestic end product under the Buy American Act as implemented in the FAR and DFARS. Product with the BAA option also qualifies as manufactured in the United States under DOT Buy America regulations.

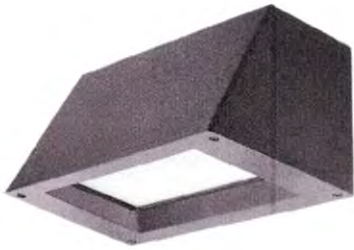
BABA – Build America Buy America: Product with the BAA option also qualifies as produced in the United States under the definitions of the Build America, Buy America Act.

Please refer to www.acuitybrands.com/buy-america for additional information.

WARRANTY

5-year limited warranty. This is the only warranty provided and no other statements in this specification sheet create any warranty of any kind. All other express and implied warranties are disclaimed. Complete warranty terms located at: www.acuitybrands.com/support/warranty/terms-and-conditions

Note: Actual performance may differ as a result of end-user environment and application. All values are design or typical values, measured under laboratory conditions at 25 °C. Specifications subject to change without notice.



WST LED

Architectural Wall Sconce



Catalog
Number

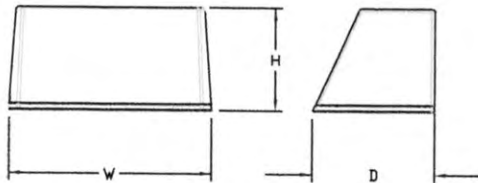
Notes

Type

Specifications

Luminaire

- Height:** 8-1/2"
(21.59 cm)
- Width:** 17"
(43.18 cm)
- Depth:** 10-3/16"
(25.9 cm)
- Weight:** 20 lbs
(9.1 kg)



Introduction

The WST LED is designed with the specifier in mind. The traditional, trapezoidal shape offers a soft, non-pixelated light source for end-user visual comfort. For emergency egress lighting, the WST LED offers six battery options, including remote. For additional code compliance and energy savings, there is also a Bi-level motion sensor option. With so many standard and optional features, three lumen packages, and high LPW, the WST LED is your "go to" luminaire for most any application.



A+ Capable options indicated by this color background.

Ordering Information

EXAMPLE: WST LED P1 40K VF MVOLT DBBTXD

WST LED

Series	Performance Package	Color temperature	Distribution	Voltage	Mounting
WST LED	P1 1,500 Lumen package	27K 2700 K	VF Visual comfort forward throw	MVOLT ¹ 277 ²	Shipped included (blank) Surface mounting bracket PBBW Premium surface-mounted back box ^{3,4} Shipped separately BBW Surface-mounted back box ³
	P2 3,000 Lumen package	30K 3000 K	VW Visual comfort wide	120 ² 347 ²	
	P3 6,000 Lumen package	40K 4000 K		208 ² 480 ²	
		50K 5000 K		240 ²	

Options	Finish (required)
NLTAIR2 PIR nLIGHT AIR Wireless enabled motion/ambient sensor for 8'-15' mounting heights ^{5,6,7}	DDBXD Dark bronze
NLTAIR2 PIRH nLIGHT AIR Wireless enabled motion/ambient sensor for 15'-30' mounting heights ^{5,6,7}	DBLXD Black
PE Photoelectric cell, button type ⁸	DNAXD Natural aluminum
PER NEMA twist-lock receptacle only (controls ordered separate) ⁹	DWHXD White
PER5 Five-wire receptacle only (controls ordered separate) ⁹	DSSXD Sandstone
PER7 Seven-wire receptacle only (controls ordered separate) ⁹	DBBTXD Textured dark bronze
PIR Motion/Ambient Light Sensor, 8-15' mounting height ^{5,6}	DBLXD Textured black
PIR1FC3V Motion/ambient sensor, 8-15' mounting height, ambient sensor enabled at 1fc ^{5,6}	DNATXD Textured natural aluminum
PIRH 180° motion/ambient light sensor, 15-30' mounting height ^{5,6}	DWHGXD Textured white
PIRH1FC3V Motion/ambient sensor, 15-30' mounting height, ambient sensor enabled at 1fc ^{5,6}	DSSTXD Textured sandstone
SF Single fuse (120, 277, 347V) ²	
DF Double fuse (208, 240, 480V) ²	
DS Dual switching ¹⁰	
DMG 0-10V dimming extend out back of housing for external control (control ordered separate) ¹¹	
E7WC Emergency battery backup, CA Title 20 Noncompliant (cold, 7W) ^{7,12}	
E20WH Emergency battery pack 18W constant power, Certified in CA Title 20 MAEDBS ⁷	
E20WC Emergency battery pack -20°C 18W constant power, Certified in CA Title 20 MAEDBS ^{7,12}	
LCE Left side conduit entry ¹⁴	
RCE Right side conduit entry ¹⁴	
BAA Buy America(n) Act Compliant	
Shipped separately	
RBPW Retrofit back plate ³	
VG Vandal guard ¹⁵	
WG Wire guard ¹⁵	

See Accessories and Notes on next page.



COMMERCIAL OUTDOOR

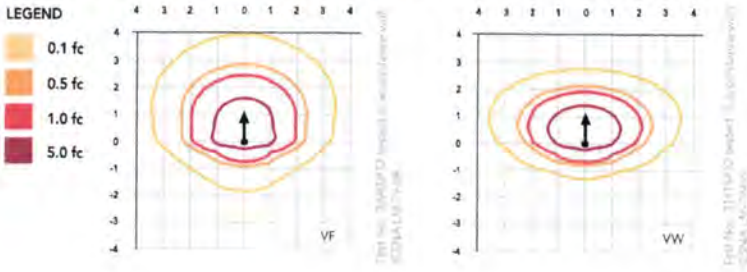
1 Acuity Way • Decatur, GA 30035 • Phone: 800-705-SERV (7378) • www.lithonia.com
© 2011-2025 Acuity Brands Lighting, Inc. All rights reserved.

WST-LED
Rev. 07/08/25

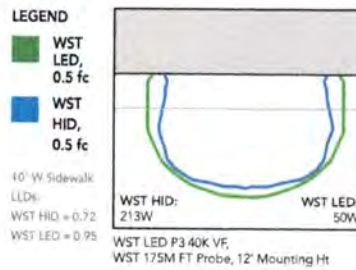
Photometric Diagrams

To see complete photometric reports or download .ies files for this product, visit Lithonia Lighting's [WST LED homepage](#).

Isofootcandle plots for the WST LED P3 40K VF and VW. Distances are in units of mounting height (10').



Distribution overlay comparison to 175W metal halide.



FEATURES & SPECIFICATIONS

INTENDED USE

The classic architectural shape of the WST LED was designed for applications such as hospitals, schools, malls, restaurants, and commercial buildings. The long life LEDs and driver make this luminaire nearly maintenance-free.

CONSTRUCTION

The single-piece die-cast aluminum housing integrates secondary heat sinks to optimize thermal transfer from the internal light engine heat sinks and promote long life. The driver is mounted in direct contact with the casting for a low operating temperature and long life. The die-cast door frame is fully gasketed with a one-piece solid silicone gasket to keep out moisture and dust, providing an IP65 rating for the luminaire.

FINISH

Exterior parts are protected by a zinc-infused Super Durable TGIC thermoset powder coat finish that provides superior resistance to corrosion and weathering. A tightly controlled multi-stage process ensures a minimum 3 mils thickness for a finish that can withstand extreme climate changes without cracking or peeling. Standard Super Durable colors include dark bronze, black, natural aluminum, sandstone and white. Available in textured and non-textured finishes.

OPTICS

Well crafted reflector optics allow the light engine to be recessed within the luminaire, providing visual comfort, superior distribution, uniformity, and spacing in wall-mount applications. The WST LED has zero uplight and qualifies as a Nighttime Friendly™ product, meaning it is consistent with the LEED® and Green Globes™ criteria for eliminating wasteful uplight.

ELECTRICAL

Light engine(s) consist of 98 high-efficacy LEDs mounted to a metal core circuit board and integral aluminum heat sinks to maximize heat dissipation and promote long life (100,000 hrs at 40°C, L87). Class 2 electronic driver has a power factor >90%, THD <20%. Easily-serviceable surge protection device meets a minimum Category B (per ANSI/IEEE C62.41.2).

INSTALLATION

A universal mounting plate with integral mounting support arms allows the fixture to hinge down for easy access while making wiring connections.

LISTINGS

CSA certified to U.S. and Canadian standards. Luminaire is IP65 rated. PIR and back box options are rated for wet location. Rated for -30°C to 40°C ambient.

GOVERNMENT PROCUREMENT

BAA – Buy America(n) Act: Product qualifies as a domestic end product under the Buy American Act as implemented in the FAR and DFARS. Product also qualifies as manufactured in the United States under DOT Buy America regulations.

BABA – Build America Buy America: Product qualifies as produced in the United States under the definitions of the Build America, Buy America Act.

Please refer to [www.lithonia.com](#) for additional information.

WARRANTY

5-year limited warranty. This is the only warranty provided and no other statements in this specification sheet create any warranty of any kind. All other express and implied warranties are disclaimed. Complete warranty terms located at: [www.lithonia.com/warranty](#)

Note: Actual performance may differ as a result of end-user environment and application. All values are design or typical values, measured under laboratory conditions at 25 °C. Specifications subject to change without notice.



COMMERCIAL OUTDOOR

1 Acuity Way • Decatur, GA 30035 • Phone: 800-705-SERV (7378) • [www.lithonia.com](#)
© 2011-2025 Acuity Brands Lighting, Inc. All rights reserved

WST-LED
Rev. 07/08/25

DORM AREA CALCULATIONS AND PLUMBING FIXTURES

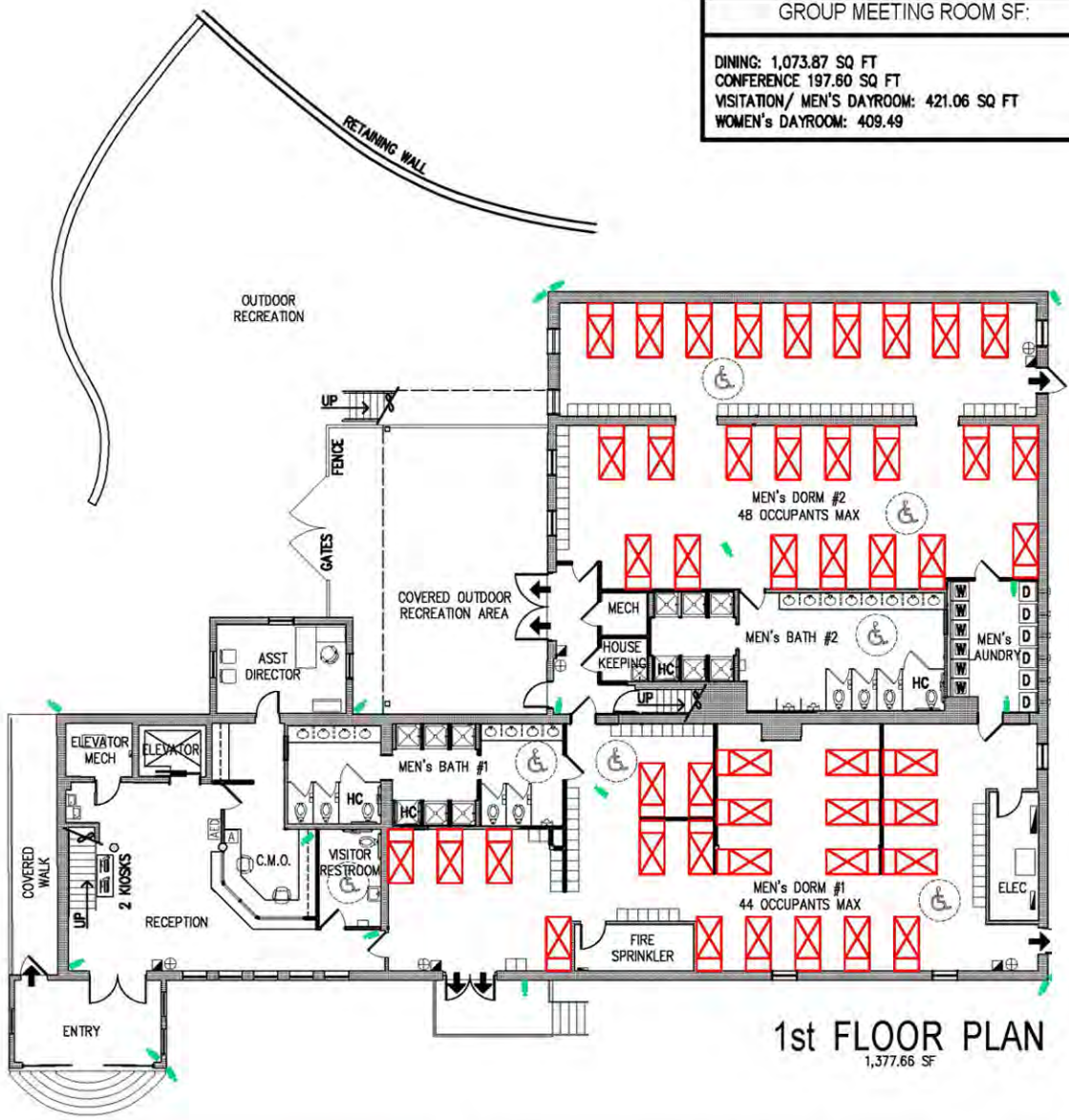
ROOM	CONTRACT OCCUPANTS	MAXIMUM OCCUPANTS	GROSS SQUARE FT	BEDS TOTAL x 19.75 SF	LOCKERS TOTAL x 1.87 SF	UNENCUMBERED SF (NET)	UNENCUMBERED SQ FT PER OCCUPANT AT MAXIMUM OCCUPANCY	TOTAL FIXTURES AT MAXIMUM OCCUPANCY *	TOTAL AVAILABLE FIXTURES *		
MEN'S DORM #1	44	44	1,848.05	22	434.5	44	82.28	1,331.27	30.26	6T, 8WB, 6SH	6T, 8WB, 6SH
MEN'S DORM #2	48	48	1,923.03	24	474	48	89.76	1,359.27	28.32	6T, 8WB, 6SH	6T, 8WB, 6SH
WOMEN'S DORM #3	8	12	502.79	6	118.5	12	22.44	361.85	30.15	2T, 2WB, 2SH	2T, 2WB, 2SH
	92 M + 8 W = 100	92 M + 12 W = 104									

* FIXTURES LEGEND
 T = TOILET or URINAL
 WB = WASH BASIN
 SH = SHOWER

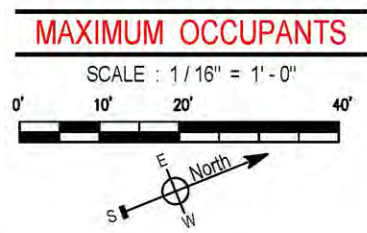
- NOTES
- HARDWIRED SMOKE DETECTORS WILL BE INSTALLED THROUGHOUT THE FACILITY ACCORDING TO ALL APPLICABLE CODES AND REQUIREMENTS.
 - FIRE ALARM ANNUNCIATOR PANEL WILL BE LOCATED IN THE CMO
 - GROSS AREA OF BUILDING:
 1st FLOOR: 7,377.66 SF GROSS
 2nd FLOOR: 7,231.66 SF GROSS
 - FACILITY WILL BE SPRINKLED TO MEET LOCAL CODES AND NFPA REQUIREMENTS.
 - FIRE EXIT EVACUATION CAPACITY BASED ON "UNIT OF EGRESS WIDTH" OF .15" PER OCCUPANT.
 - MAXIMUM ROOM OCCUPANCIES, EXCEPT DORMS ARE CALCULATED AT 1 OCCUPANT PER 15 SQUARE FEET.
 - DORMS HAVE A MINIMUM OF 25 CONTINUOUS SQUARE FEET OF UNENCUMBERED SPACE PER OCCUPANT.

GROUP MEETING ROOM SF:
 DINING: 1,073.87 SQ FT
 CONFERENCE 197.60 SQ FT
 VISITATION/ MEN'S DAYROOM: 421.06 SQ FT
 WOMEN'S DAYROOM: 409.49

- SYMBOLS LIST
- DOUBLE BUNK BED 19.75 SF
 - SINGLE BED 19.75 SF
 - LOCKER 1.87 SF
 - RESIDENT KIOSK
 - RESIDENT COMPUTER
 - SURVEILLANCE CAMERA
 - WALL HUNG TV
 - RESIDENT WALL PHONE
 - SECURITY MONITOR
 - ANNUNCIATOR PANEL
 - AUTOMATED EXTERNAL DEFIBRILLATOR
 - FIRE ALARM PULL STATION
 - FIRE EXTINGUISHER
 - URINAL
 - TOILET
 - WALL HUNG WASH BASIN
 - COUNTERTOP WASH BASIN
 - MOP SINK
 - ABA DRINKING FOUNTAIN
 - STANDARD SHOWER
 - ABA SHOWER
 - WASHER
 - DRYER
 - 240 PERSON EGRESS CAPACITY PER NOTE 6
 - 480 PERSON EGRESS CAPACITY PER NOTE 6
 - 5' DIAMETER ADA CLEARANCE



1st FLOOR PLAN
 1,377.66 SF



1st FLOOR PLAN
 MAXIMUM OCCUPANTS
 DATE : JULY 09, 2025

DISMAS CHARITIES
 PITTSBURGH
 1070 - 1076 BANKSVILLE AVENUE
 PITTSBURGH, PA 15216



DRAWN BY:
 DIVERSIONS LLC
 PENNY GBBS GARRETT
 DESIGN PROFESSIONAL
 247 PEPPER DRIVE
 LEXINGTON KY. 40511

DORM AREA CALCULATIONS AND PLUMBING FIXTURES											
ROOM	CONTRACT OCCUPANTS	MAXIMUM OCCUPANTS	GROSS SQUARE FT	BEDS TOTAL x 19.75 SF	LOCKERS TOTAL x 1.87 SF	UNENCUMBERED SF (NET)	UNENCUMBERED SQ FT PER OCCUPANT AT MAXIMUM OCCUPANCY	TOTAL FIXTURES AT MAXIMUM OCCUPANCY *	TOTAL AVAILABLE FIXTURES *		
MEN'S DORM #1	44	44	1,848.05	22	434.5	44	82.28	1,331.27	30.26	6T, 8WB, 6SH	6T, 8WB, 6SH
MEN'S DORM #2	48	48	1,923.03	24	474	48	89.76	1,359.27	28.32	6T, 8WB, 6SH	6T, 8WB, 6SH
WOMEN'S DORM #3	8	12	502.79	6	118.5	12	22.44	361.85	30.15	2T, 2WB, 2SH	2T, 2WB, 2SH
	92 M + 8 W = 100	92 M + 12 W = 104									

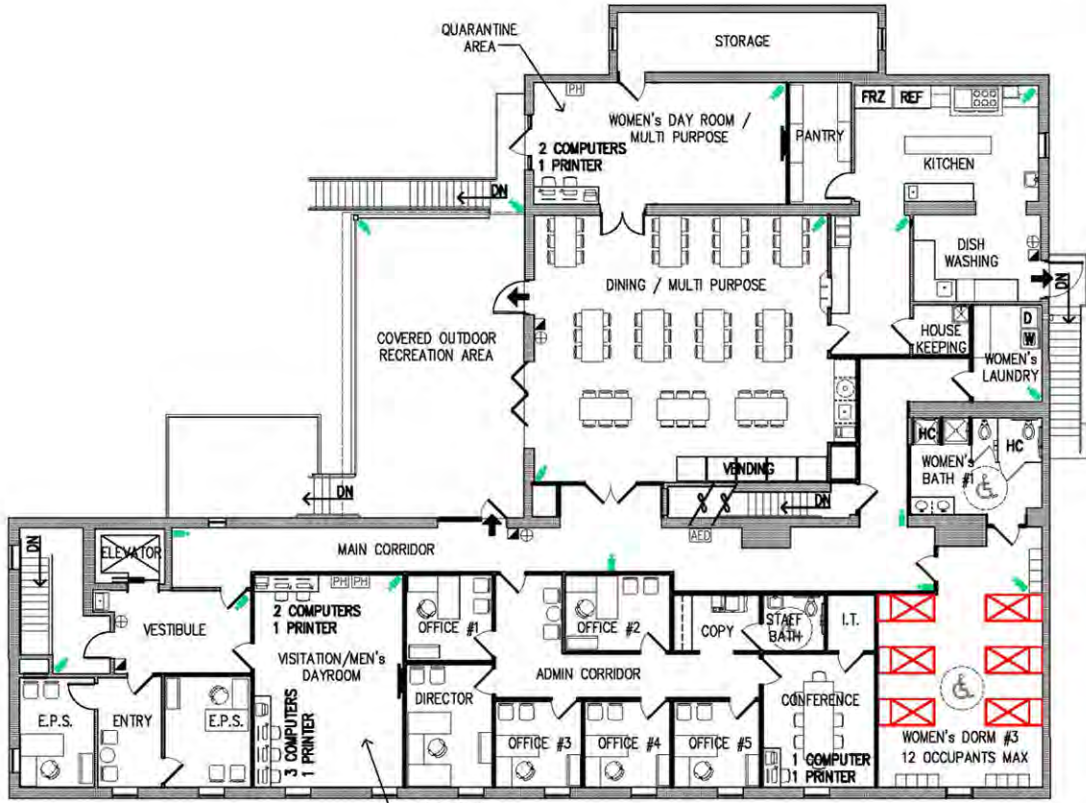
* FIXTURES LEGEND
 T = TOILET or URINAL
 WB = WASH BASIN
 SH = SHOWER

- NOTES
- HARDWIRED SMOKE DETECTORS WILL BE INSTALLED THROUGHOUT THE FACILITY ACCORDING TO ALL APPLICABLE CODES AND REQUIREMENTS.
 - FIRE ALARM ANNUNCIATOR PANEL WILL BE LOCATED IN THE CMO
 - GROSS AREA OF BUILDING:
 1st FLOOR: 7,377.66 SF GROSS
 2nd FLOOR: 7,231.66 SF GROSS
 - FACILITY WILL BE SPRINKLED TO MEET LOCAL CODES AND NFPA REQUIREMENTS.
 - FIRE EXIT EVACUATION CAPACITY BASED ON "UNIT OF EGRESS WIDTH" OF .15" PER OCCUPANT.
 - MAXIMUM ROOM OCCUPANCIES, EXCEPT DORMS ARE CALCULATED AT 1 OCCUPANT PER 15 SQUARE FEET.
 - DORMS HAVE A MINIMUM OF 25 CONTINUOUS SQUARE FEET OF UNENCUMBERED SPACE PER OCCUPANT.

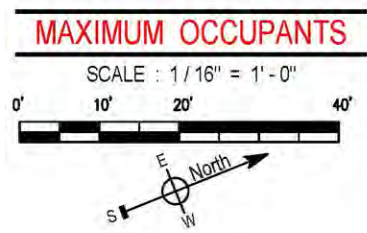
GROUP MEETING ROOM SF:

DINING: 1,073.87 SQ FT
 CONFERENCE 197.60 SQ FT
 VISITATION/ MEN'S DAYROOM: 421.06 SQ FT
 WOMEN'S DAYROOM: 409.49

- SYMBOLS LIST
- DOUBLE BUNK BED 19.75 SF
 - SINGLE BED 19.75 SF
 - LOCKER 1.87 SF
 - RESIDENT KIOSK
 - RESIDENT COMPUTER
 - SURVEILLANCE CAMERA
 - WALL HUNG TV
 - RESIDENT WALL PHONE
 - SECURITY MONITOR
 - ANNUNCIATOR PANEL
 - AUTOMATED EXTERNAL DEFIBRILLATOR
 - FIRE ALARM PULL STATION
 - FIRE EXTINGUISHER
 - URINAL
 - TOILET
 - WALL HUNG WASH BASIN
 - COUNTERTOP WASH BASIN
 - MOP SINK
 - ABA DRINKING FOUNTAIN
 - STANDARD SHOWER
 - ABA SHOWER
 - WASHER
 - DRYER
 - 240 PERSON EGRESS CAPACITY PER NOTE 6
 - 480 PERSON EGRESS CAPACITY PER NOTE 6
 - 5' DIAMETER ADA CLEARANCE



2nd FLOOR PLAN
 7,231.66 SF



2nd FLOOR PLAN
 MAXIMUM OCCUPANTS
 DATE : JULY 09, 2025

DISMAS CHARITIES
 PITTSBURGH
 1070 - 1076 BANKSVILLE AVENUE
 PITTSBURGH, PA 15216



DRAWN BY:
 DIVERSIONS LLC
 PENNY GBBS GARRETT
 DESIGN PROFESSIONAL
 247 PEPPER DRIVE
 LEXINGTON KY. 40511

DORM AREA CALCULATIONS AND PLUMBING FIXTURES											
ROOM	CONTRACT OCCUPANTS	MAXIMUM OCCUPANTS	GROSS SQUARE FT	BEDS TOTAL x 19.75 SF	LOCKERS TOTAL x 1.87 SF	UNENCUMBERED SF (NET)	UNENCUMBERED SQ FT PER OCCUPANT AT MAXIMUM OCCUPANCY	TOTAL FIXTURES AT MAXIMUM OCCUPANCY *	TOTAL AVAILABLE FIXTURES *		
MEN'S DORM #1	44	44	1,848.05	22	434.5	44	82.28	1,331.27	30.26	6T, 8WB, 6SH	6T, 8WB, 6SH
MEN'S DORM #2	48	48	1,923.03	24	474	48	89.76	1,359.27	28.32	6T, 8WB, 6SH	6T, 8WB, 6SH
WOMEN'S DORM #3	8	12	502.79	6	118.5	12	22.44	361.85	30.15	2T, 2WB, 2SH	2T, 2WB, 2SH
	92 M + 8 W = 100	92 M + 12 W = 104									

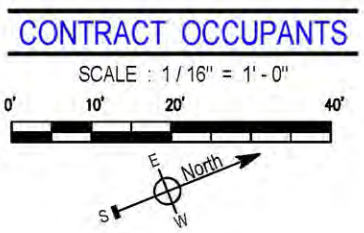
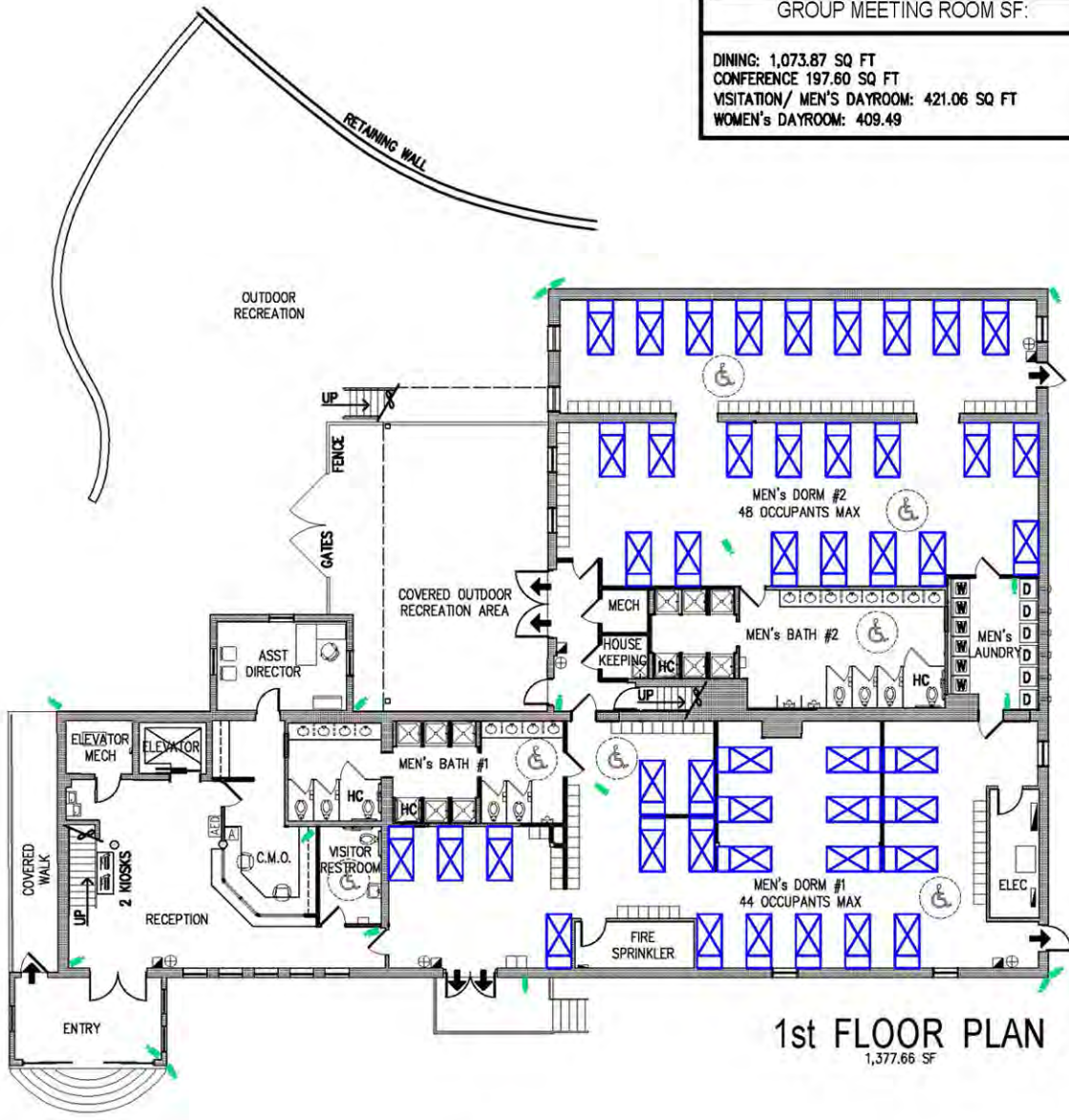
* FIXTURES LEGEND
 T = TOILET or URINAL
 WB = WASH BASIN
 SH = SHOWER

- NOTES**
- HARDWIRED SMOKE DETECTORS WILL BE INSTALLED THROUGHOUT THE FACILITY ACCORDING TO ALL APPLICABLE CODES AND REQUIREMENTS.
 - FIRE ALARM ANNUNCIATOR PANEL WILL BE LOCATED IN THE CMO
 - GROSS AREA OF BUILDING:
 1st FLOOR: 7,377.66 SF GROSS
 2nd FLOOR: 7,231.66 SF GROSS
 - FACILITY WILL BE SPRINKLED TO MEET LOCAL CODES AND NFPA REQUIREMENTS.
 - FIRE EXIT EVACUATION CAPACITY BASED ON "UNIT OF EGRESS WIDTH" OF .15" PER OCCUPANT.
 - MAXIMUM ROOM OCCUPANCIES, EXCEPT DORMS ARE CALCULATED AT 1 OCCUPANT PER 15 SQUARE FEET.
 - DORMS HAVE A MINIMUM OF 25 CONTINUOUS SQUARE FEET OF UNENCUMBERED SPACE PER OCCUPANT.

GROUP MEETING ROOM SF:

DINING: 1,073.87 SQ FT
 CONFERENCE 197.60 SQ FT
 VISITATION/ MEN'S DAYROOM: 421.06 SQ FT
 WOMEN'S DAYROOM: 409.49

- SYMBOLS LIST**
- DOUBLE BUNK BED 19.75 SF
 - SINGLE BED 19.75 SF
 - LOCKER 1.87 SF
 - RESIDENT KIOSK
 - RESIDENT COMPUTER
 - SURVEILLANCE CAMERA
 - WALL HUNG TV
 - RESIDENT WALL PHONE
 - SECURITY MONITOR
 - ANNUNCIATOR PANEL
 - AUTOMATED EXTERNAL DEFIBRILLATOR
 - FIRE ALARM PULL STATION
 - FIRE EXTINGUISHER
 - URINAL
 - TOILET
 - WALL HUNG WASH BASIN
 - COUNTERTOP WASH BASIN
 - MOP SINK
 - ABA DRINKING FOUNTAIN
 - STANDARD SHOWER
 - ABA SHOWER
 - WASHER
 - DRYER
 - 240 PERSON EGRESS CAPACITY PER NOTE 6
 - 480 PERSON EGRESS CAPACITY PER NOTE 6
 - 5' DIAMETER ADA CLEARANCE



1st FLOOR PLAN
 1,377.66 SF

1st FLOOR PLAN CONTRACT OCCUPANTS
 DATE : JULY 09, 2025

DISMAS CHARITIES
 PITTSBURGH
 1070 - 1076 BANKSVILLE AVENUE
 PITTSBURGH, PA 15216



DRAWN BY:
 DIVERSIONS LLC
 PENNY GBBS GARRETT
 DESIGN PROFESSIONAL
 247 PEPPER DRIVE
 LEXINGTON KY, 40511

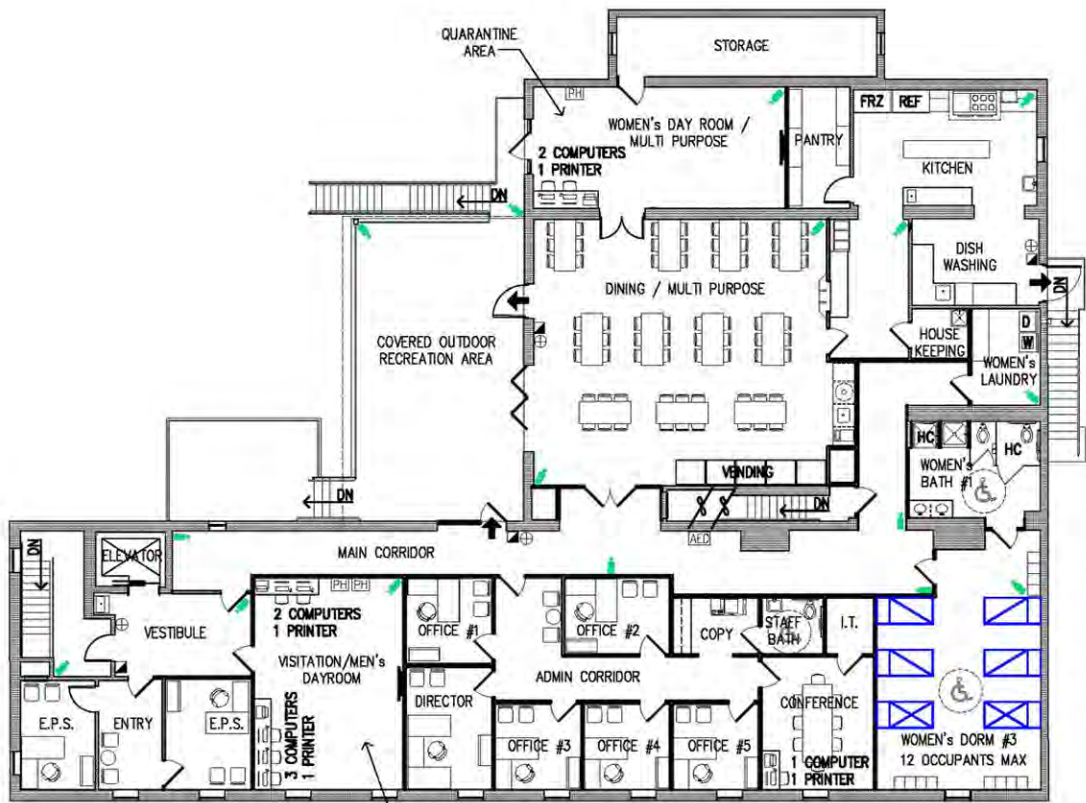
DORM AREA CALCULATIONS AND PLUMBING FIXTURES											
ROOM	CONTRACT OCCUPANTS	MAXIMUM OCCUPANTS	GROSS SQUARE FT	BEDS TOTAL x 19.75 SF	LOCKERS TOTAL x 1.87 SF	UNENCUMBERED SF (NET)	UNENCUMBERED SQ FT PER OCCUPANT AT MAXIMUM OCCUPANCY	TOTAL FIXTURES AT MAXIMUM OCCUPANCY *	TOTAL AVAILABLE FIXTURES *		
MEN'S DORM #1	44	44	1,848.05	22	434.5	44	82.28	1,331.27	30.26	6T, 8WB, 6SH	6T, 8WB, 6SH
MEN'S DORM #2	48	48	1,923.03	24	474	48	89.76	1,359.27	28.32	6T, 8WB, 6SH	6T, 8WB, 6SH
WOMEN'S DORM #3	8	12	502.79	6	118.5	12	22.44	361.85	30.15	2T, 2WB, 2SH	2T, 2WB, 2SH
	92 M + 8 W = 100	92 M + 12 W = 104									

* FIXTURES LEGEND
T = TOILET or URINAL
WB = WASH BASIN
SH = SHOWER

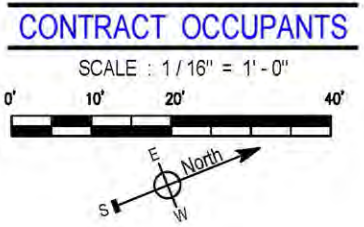
- NOTES
- HARDWIRED SMOKE DETECTORS WILL BE INSTALLED THROUGHOUT THE FACILITY ACCORDING TO ALL APPLICABLE CODES AND REQUIREMENTS.
 - FIRE ALARM ANNUNCIATOR PANEL WILL BE LOCATED IN THE CMO
 - GROSS AREA OF BUILDING:
1st FLOOR: 7,377.66 SF GROSS
2nd FLOOR: 7,231.66 SF GROSS
 - FACILITY WILL BE SPRINKLED TO MEET LOCAL CODES AND NFPA REQUIREMENTS.
 - FIRE EXIT EVACUATION CAPACITY BASED ON "UNIT OF EGRESS WIDTH" OF .15" PER OCCUPANT.
 - MAXIMUM ROOM OCCUPANCIES, EXCEPT DORMS ARE CALCULATED AT 1 OCCUPANT PER 15 SQUARE FEET.
 - DORMS HAVE A MINIMUM OF 25 CONTINUOUS SQUARE FEET OF UNENCUMBERED SPACE PER OCCUPANT.

GROUP MEETING ROOM SF:
DINING: 1,073.87 SQ FT
CONFERENCE 197.60 SQ FT
VISITATION/ MEN'S DAYROOM: 421.06 SQ FT
WOMEN'S DAYROOM: 409.49

- SYMBOLS LIST
- DOUBLE BUNK BED 19.75 SF
 - SINGLE BED 19.75 SF
 - LOCKER 1.87 SF
 - RESIDENT KIOSK
 - RESIDENT COMPUTER
 - SURVEILLANCE CAMERA
 - WALL HUNG TV
 - RESIDENT WALL PHONE
 - SECURITY MONITOR
 - ANNUNCIATOR PANEL
 - AUTOMATED EXTERNAL DEFIBRILLATOR
 - FIRE ALARM PULL STATION
 - FIRE EXTINGUISHER
 - URINAL
 - TOILET
 - WALL HUNG WASH BASIN
 - COUNTERTOP WASH BASIN
 - MOP SINK
 - ABA DRINKING FOUNTAIN
 - STANDARD SHOWER
 - ABA SHOWER
 - WASHER
 - DRYER
 - 240 PERSON EGRESS CAPACITY PER NOTE 6
 - 480 PERSON EGRESS CAPACITY PER NOTE 6
 - 5' DIAMETER ADA CLEARANCE



2nd FLOOR PLAN
7,231.66 SF

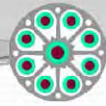


2nd FLOOR PLAN CONTRACT OCCUPANTS
DATE : JULY 09, 2025

DISMAS CHARITIES
PITTSBURGH
1070 - 1076 BANKSVILLE AVENUE
PITTSBURGH, PA 15216



DRAWN BY:
DIVERSIONS LLC
PENNY GBBS GARRETT
DESIGN PROFESSIONAL
247 PEPPER DRIVE
LEXINGTON KY. 40511



Healing the Human Spirit

Recovery & Redemption



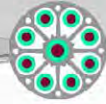
Father William Diersen

“It’s hard for someone who’s failed to get up if you are walking on top of them. You’d be surprised some time if you’d reach down, give a helping hand, and maybe ask:

How’d you fall?

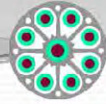
How can I help?

Well let’s try this again.”



Dismas Beginnings

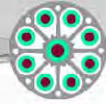
- Founded in 1964 in Louisville, Kentucky.
- Opened 15 bed halfway house or residential reentry center.
- Provided transitional support for parolee, probationers and soon to be released inmates to break the cycle of recidivism and reduce victimization.



Dismas Beginnings

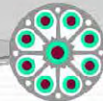


Dismas Charities Louisville



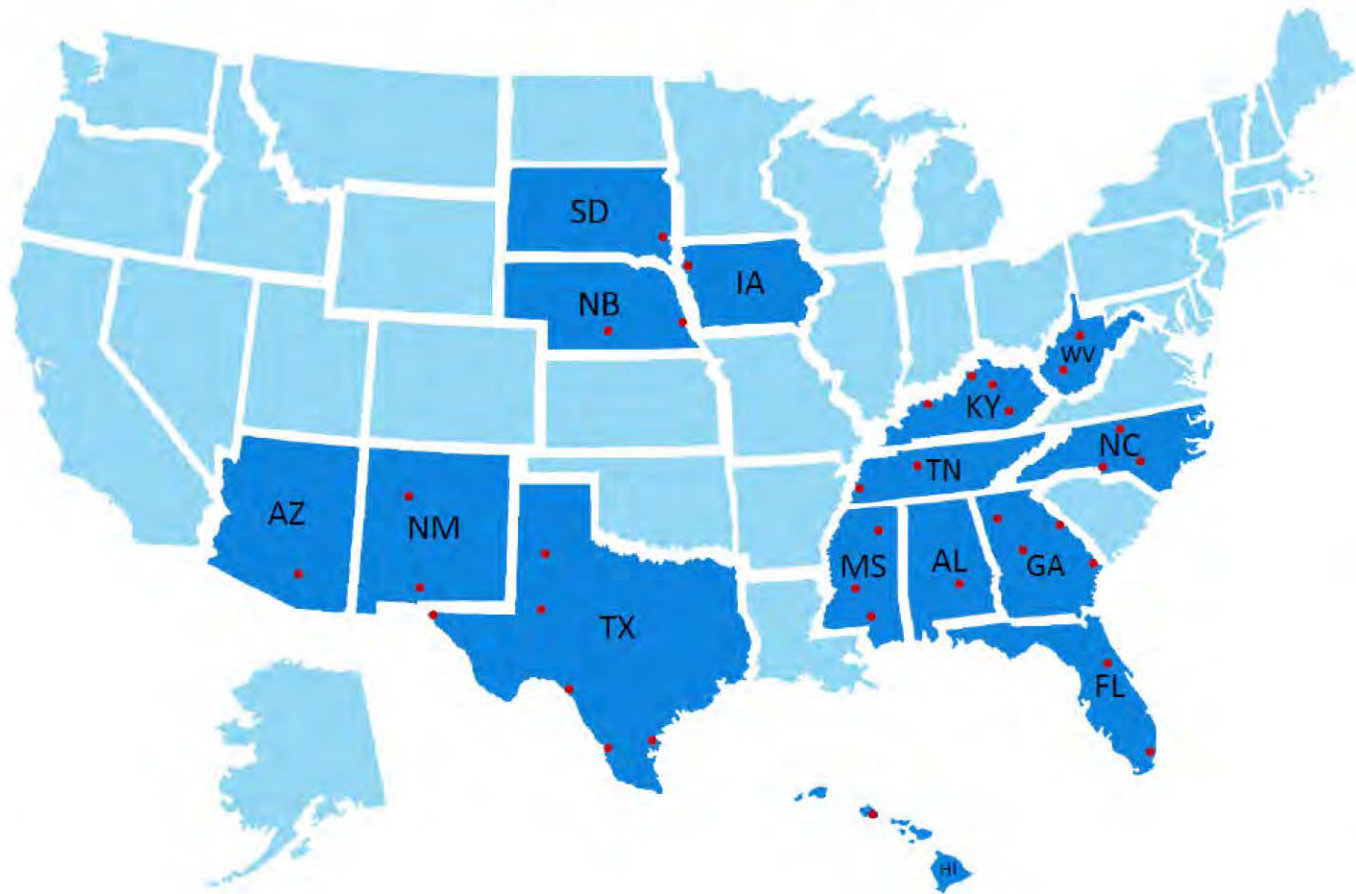
Dismas Now

- 39 Residential Reentry Centers in 14 states and 1 Day Reporting Center in Honolulu, HI.
- Contracts with the Federal Bureau of Prisons, Federal District Courts and KY Department of Corrections.
- In the past 5 years – we served 39,918 clients. *Only .08% returned through our facilities as repeat clients.*



Dismas Now

National Presence



Arizona

Tucson

Hawaii

Honolulu

Iowa

Sioux City

Mississippi

Hattiesburg
Tupelo
Jackson

Nebraska

Kearney
Omaha

New Mexico

Albuquerque
Las Cruces

South Dakota

Sioux Falls

Texas

Corpus Christi
Del Rio
El Paso
Laredo
Lubbock
Midland

Alabama

Montgomery

Florida

Dania Beach
Orlando

Georgia

Atlanta
Augusta
Macon
Savannah

Kentucky

Corporate Office
Diersen
Lexington
Louisville
Manchester
Owensboro
Portland
St. Ann
St. Patrick

Tennessee

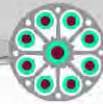
Memphis
Memphis DRC
Nashville

West Virginia

Charleston
Clarksburg

North Carolina

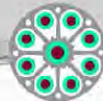
Greensboro
Charlotte
Fayetteville



Dismas Charities Pittsburgh, PA

Key Security & Accountability Practices

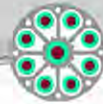
- Clients referred by Federal Bureau of Prisons or US District Court.
- For the last five years - Average Residential Stay is 42 days and Average Age is 40 years.
- Community Custody, the minimum custody level in the Federal system.
- Reside in the facility; then reside at an approved home placement residence with 24/7 GPS electronic monitoring.
- Facility staffed 24/7/365 by locally hired, professional, trained staff.



Dismas Charities Pittsburgh, PA

Key Security & Accountability Practices

- A Central Monitoring Office at the main entrance will monitor all client activity in and outside of the facility.
- Interior and Exterior surveillance security cameras with hi-definition color cameras and continuous digital recorder.
- Validated risks, needs and strengths assessment completed for clients.
- Assessment is completed to determine appropriate, effective community supervision and support services needed for each client.



Dismas Charities Pittsburgh, PA

Key Security & Accountability Practices

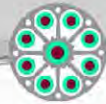
- Dismas Charities and the Federal Bureau of Prisons have a zero-tolerance policy for drug and alcohol use.
- 90% of the population randomly drug tested 4 times per month.
- Additional, on-going random drug testing performed based on suspected drug use.
- Upon return from an approved community movement, all clients receive a breathalyzer for the detection of alcohol use and a pat-search for the detection of contraband.
- Monthly scheduled and random searches are conducted for the entire facility, all clients and their approved vehicles for the detection and removal of contraband.



Dismas Charities Pittsburgh, PA

Key Security & Accountability Practices

- Each time a client leaves and returns from an approved community movement, they do so by our bio-metric sign-in and sign-out accountability system.
- Clients are required to provide staff with receipts or attendance verification for all approved community movements.
- Since 2005, we have electronically recorded millions of client accountability transactions.
- All client visitation is scheduled and staff supervised.



Dismas Charities Pittsburgh, PA

Key Security & Accountability Practices

- During a client's stay, communication on the client's progress is frequently discussed and shared with US Probation and the Bureau of Prisons.
- If a client is not successfully meeting their program requirements, they can be removed and returned to incarceration.
- Upon release, most clients continue their community accountability and supervision through the US Probation Department, normally this is a period of 3, 5 or 7 years.

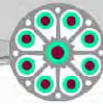


Dismas Charities

Community Integration – Greensboro, NC (*Downtown Location*)

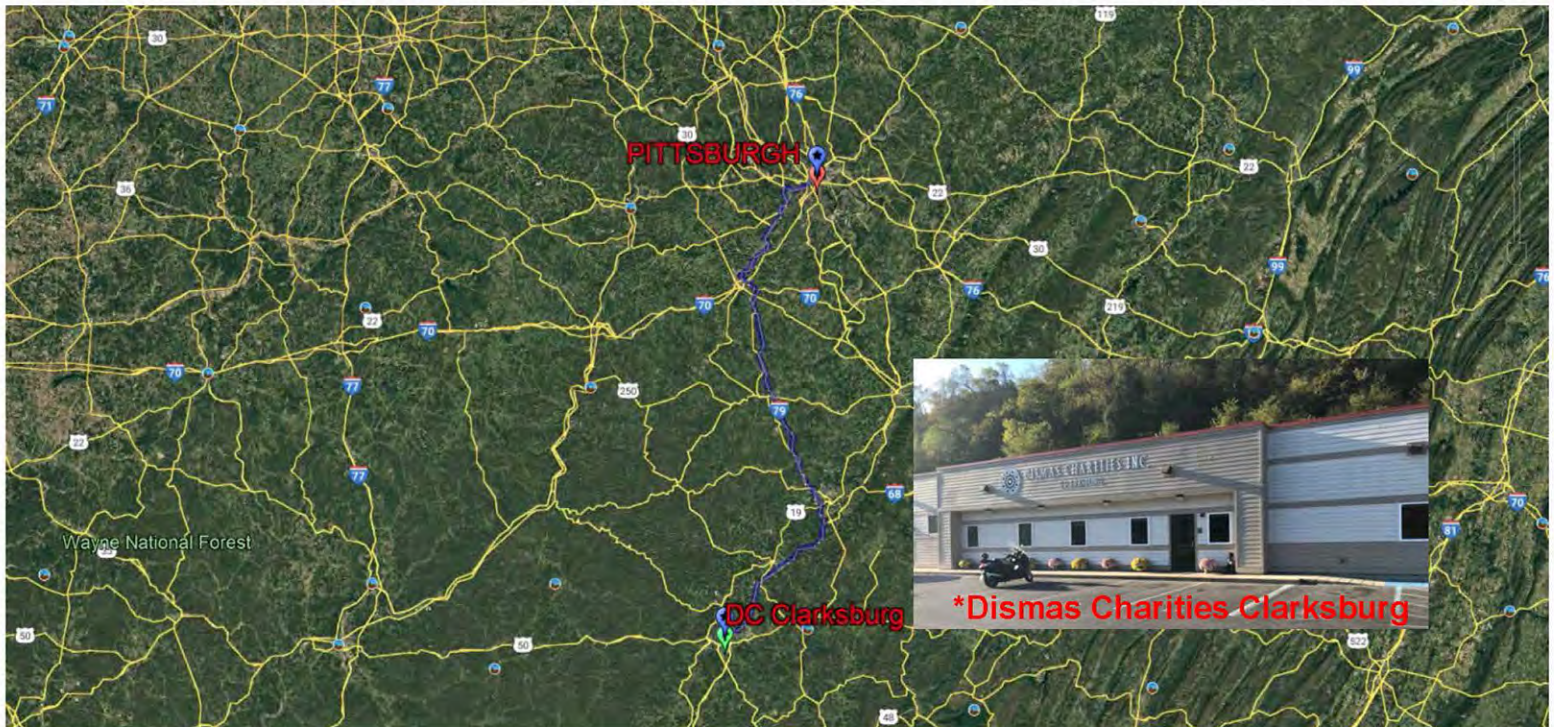


Our Greensboro Residential Reentry Facility opened on November 1, 2003. Dismas' facility is located in a downtown area and similar in contract size to Pittsburgh. Our current 5-year contract is for 60 (52 M + 8 F) RRC Beds + 40 HC Placements.



Dismas Charities

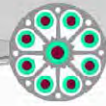
Community Integration – Clarksburg, WV (*Nearest Facility*)



Our Clarksburg, WV Residential Reentry Facility opened on October 1, 2015.

Dismas' nearest facility to Pittsburgh, PA – Approximately 107 miles and 1 hour, 45 minutes.

Our current 10-year contract is for 38 (30 M + 8 F) RRC Beds + 8 HC Placements.



Dismas Charities



In August 2024, over 125 diverse, senior management team members including Dismas Executive Leadership, Regional Vice Presidents, Directors, Assistant Directors and Support Team Members attended the annual Leadership Conference and our 60th Year Celebration held in Louisville, KY.



Private Director's Office equipped with Networked Computer, Security Camera Monitor, Dedicated Color Printer and Multi-line Telephone System.



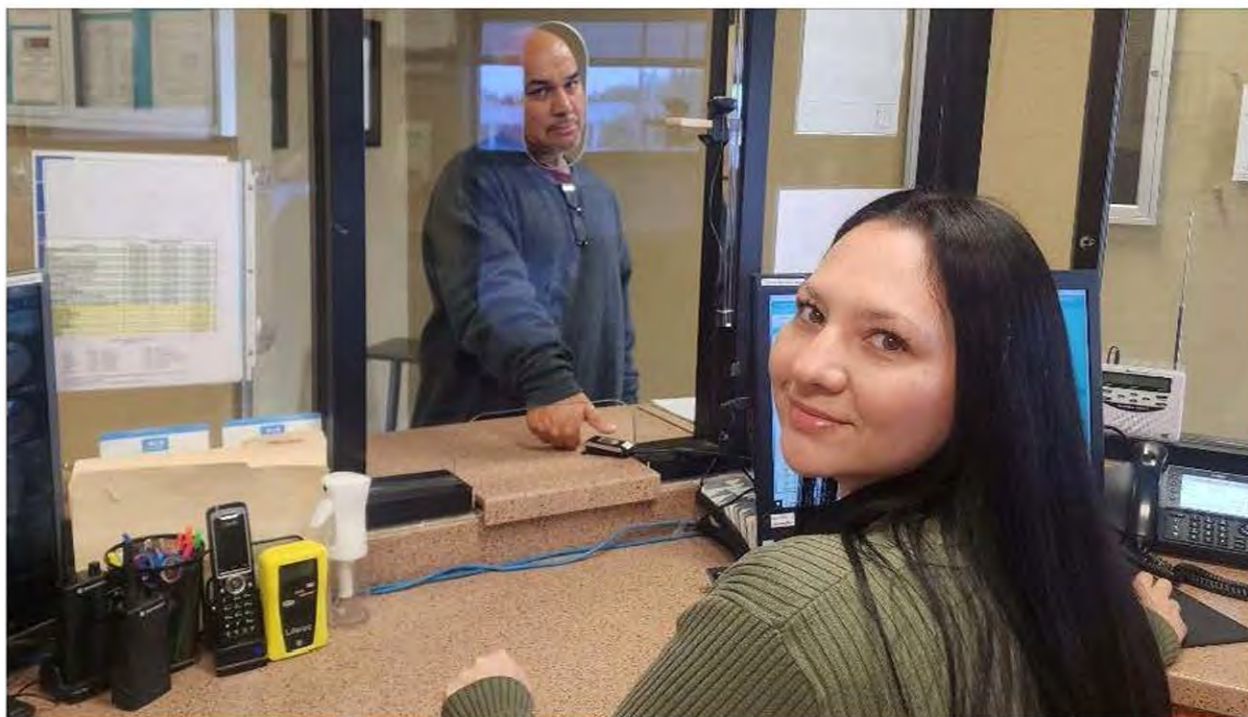
Private Administrative Office showing Networked Computer, Printer and Multi-line Telephone System. Individual offices permit Administrative Team Members to meet privately with clients.



Conference Room equipped with Television, Cable Service, DVD Player and Wall Art



Copy Room showing a Hi-speed Copier/Scanner/Fax Machine, Team Member Bulletin Board, Facility Supplies and Wall Art



Typical Secure Central Monitoring Office (CMO) showing Transaction and Observation Windows to Main Entrance, Reception Area, Security Camera Monitor, multi-line Staff Telephone system with Intercom/Paging capability, Alco Blow Evidential Breath Measurement Device and a Hand-Held Metal Detector. The CMO monitors all client, team member, vendor and visitor movement in and out of the RRC. A Resident Monitor is shown checking a client out of the RRC using the Resident Accountability Module (RAM) fingerprint scanner to identify the client and confirm their approved movement schedule.



Typical Reception Area showing an RRC team member utilizing an Alco Blow Evidential Breath Measurement Device upon a client return to the RRC from the community.



Typical Dining Room showing securable Food Service Window, Entrance to Kitchen, Color TV with Internet or Cable Service and large Exterior Windows for natural lighting.



Typical Full Service, Commercial Kitchen is equipped with High Quality, Stainless Steel Equipment



Typical Men's and Women's Dorms





Typical Men's and Women's Dayrooms with Tables, Chairs, Cable Television, DVD Player, Colorful Wall Art and Resident Computers





**Typical Bathroom showing
Handicapped Accessible Showers, Toilets & Urinal**





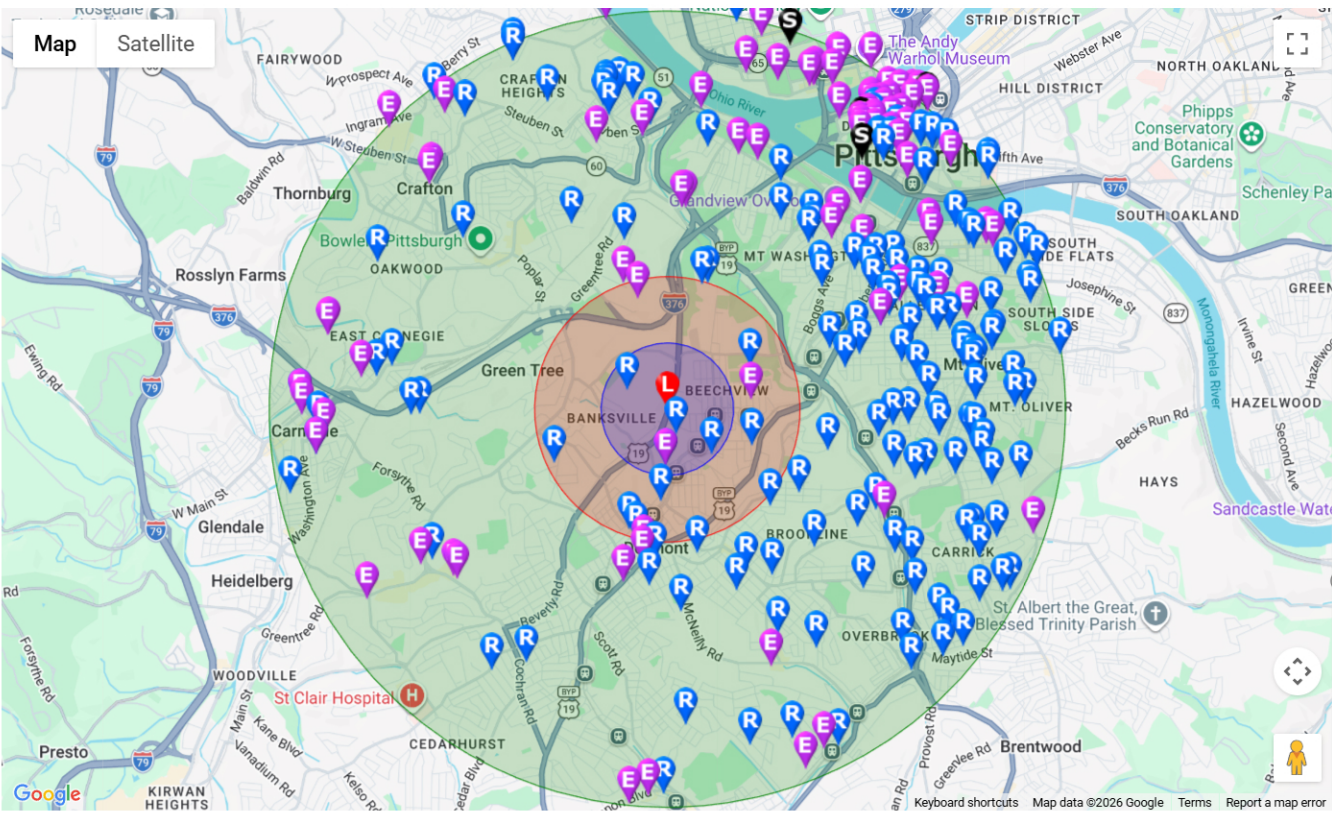
Typical Bathroom showing Wash Basins



Typical Laundry

PA Megan's Law Offender Search

Show All Offenders on List



Search Location

Residential

Employment

School

1/2 mile radius

1 mile radius

3 mile radius

5 mile radius