



709 N. Aiken Ave.  
Pittsburgh, PA

Stanton Heights  
Zoning District R1D-L

Additions and Renovations  
to existing facilities to  
accommodate educational  
programs to support  
student needs and goals

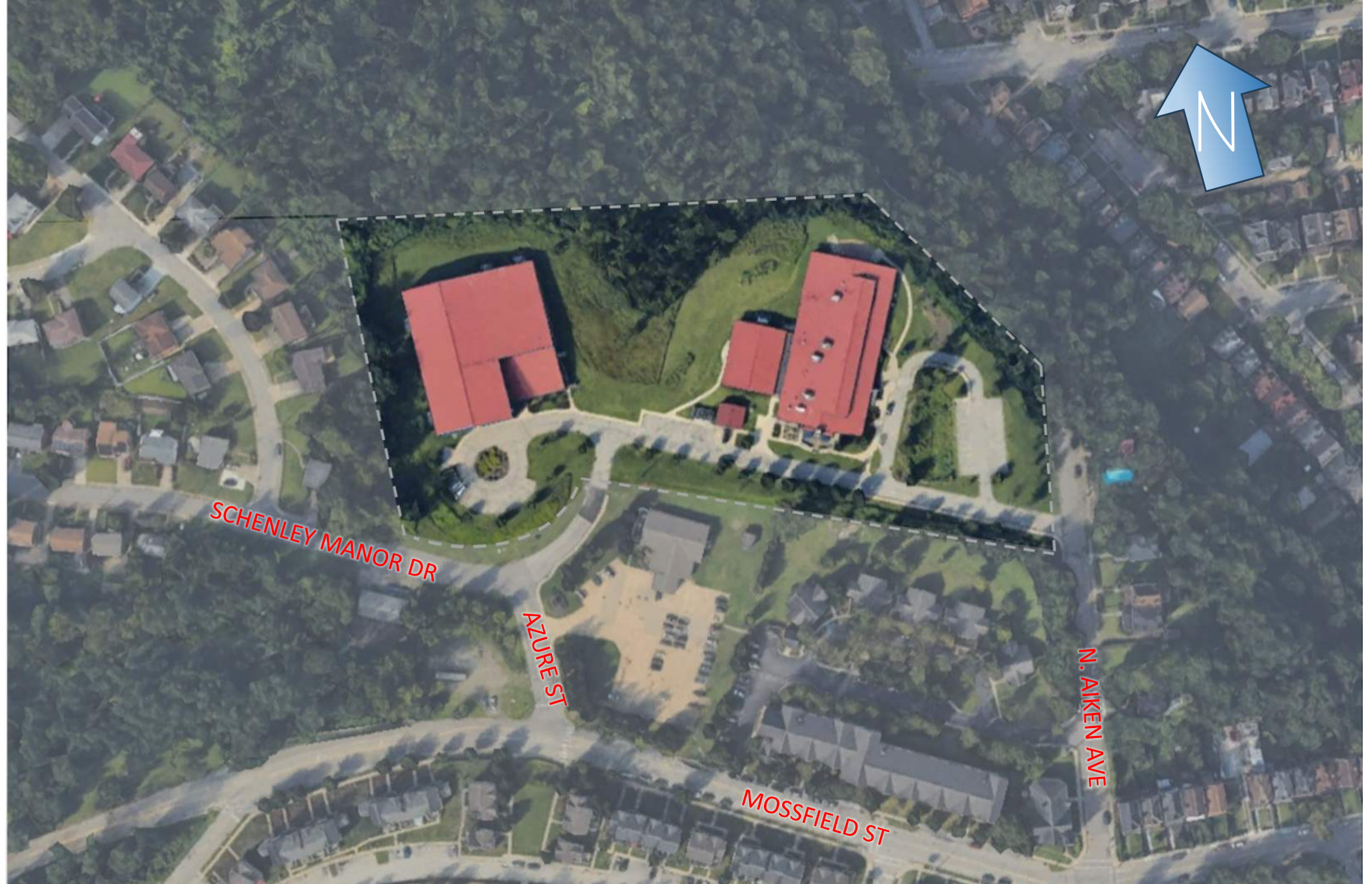
# THE NEIGHBORHOOD ACADEMY

## Renovations and Additions

06 May 2025

SCHRADERGROUP

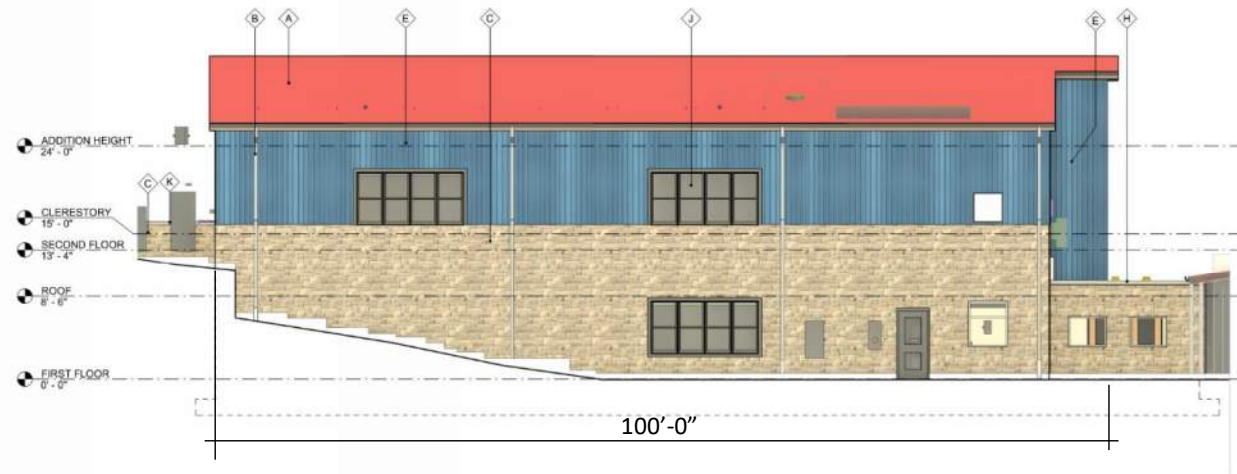




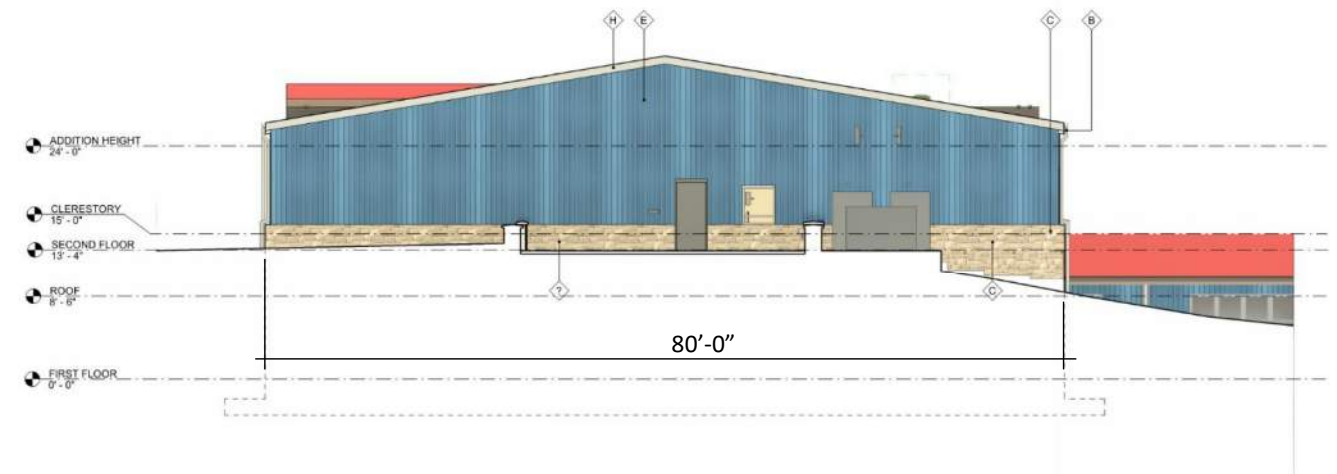




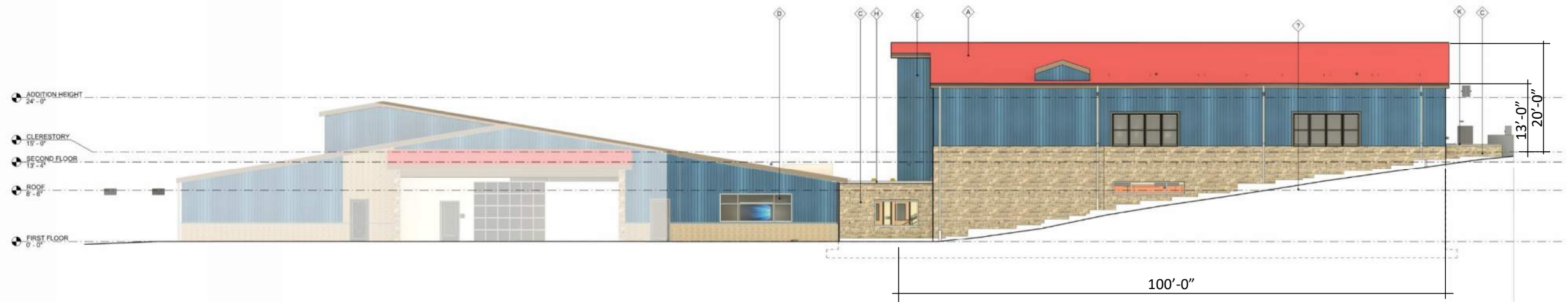




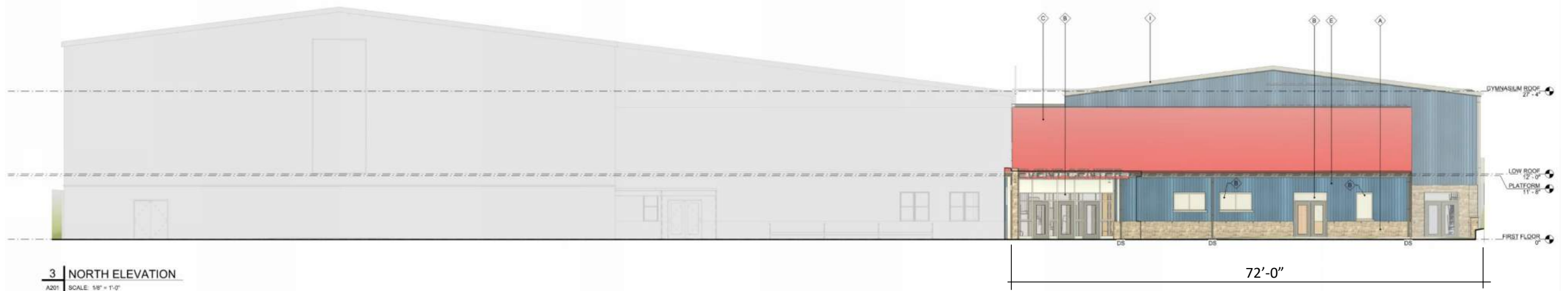
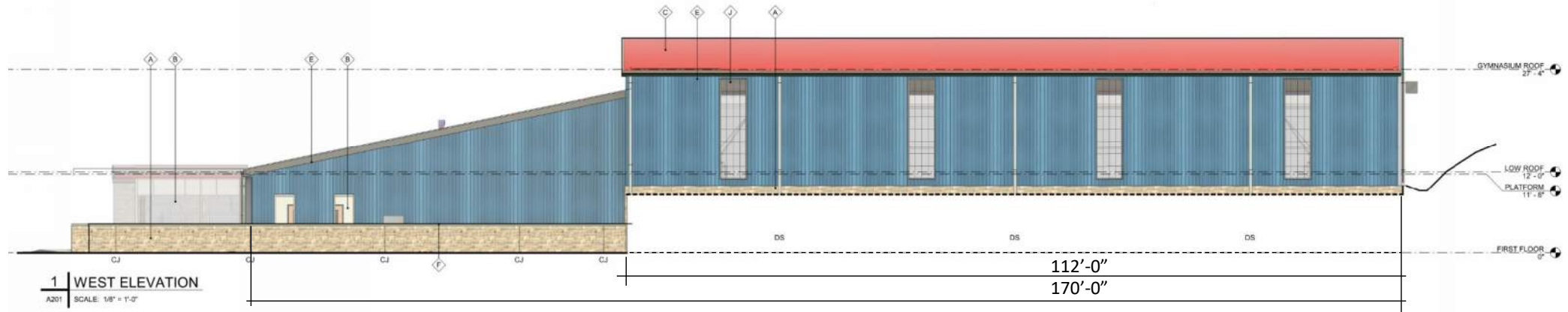
1 | WEST BUILDING ELEVATION  
A201 SCALE: 1/8" = 1'-0"



2 | NORTH BUILDING ELEVATION  
A201 SCALE: 1/8" = 1'-0"



3 | EAST BUILDING ELEVATION  
A201 SCALE: 1/8" = 1'-0"

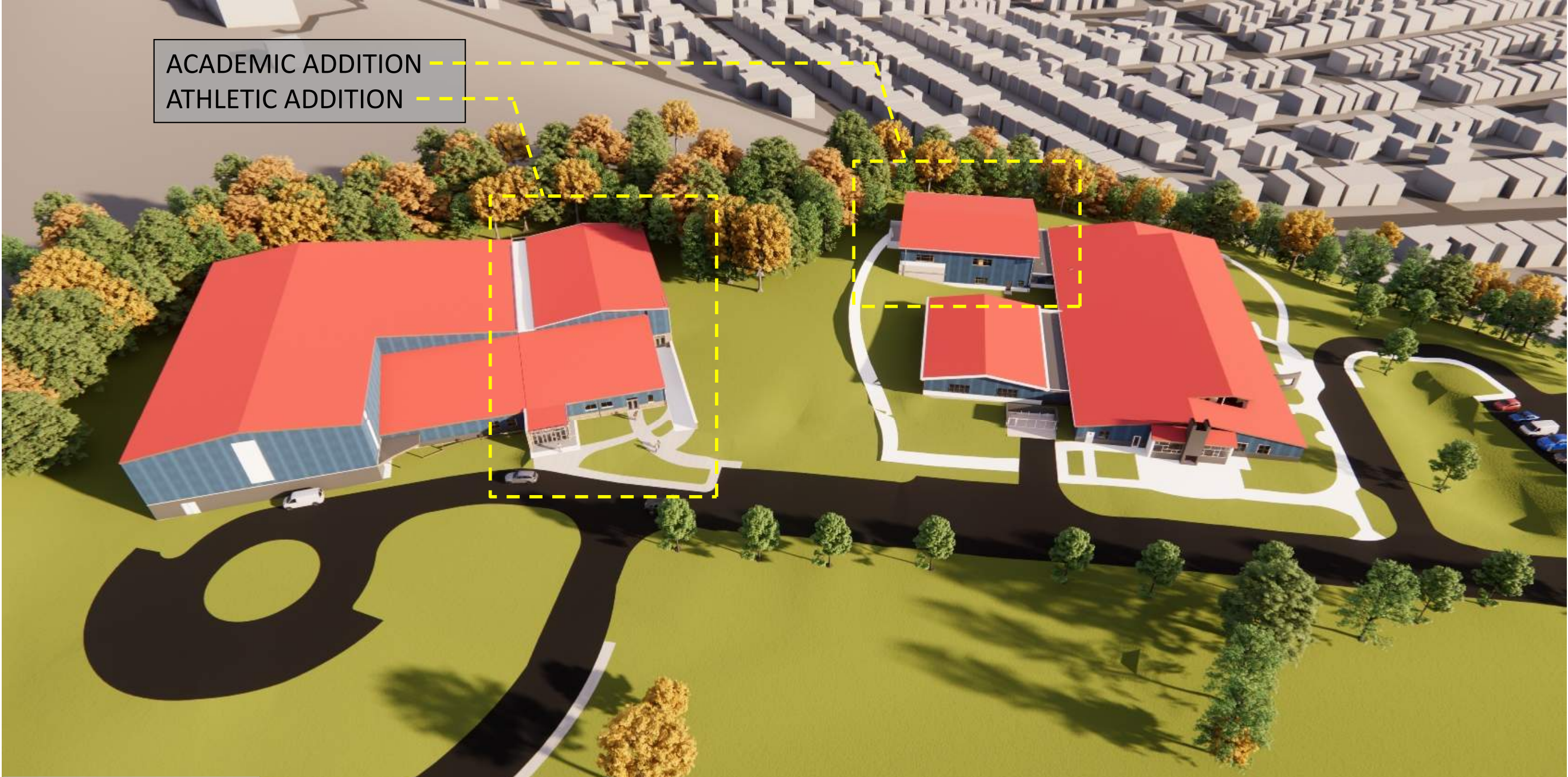








ACADEMIC ADDITION  
ATHLETIC ADDITION











ACADEMIC ADDITION



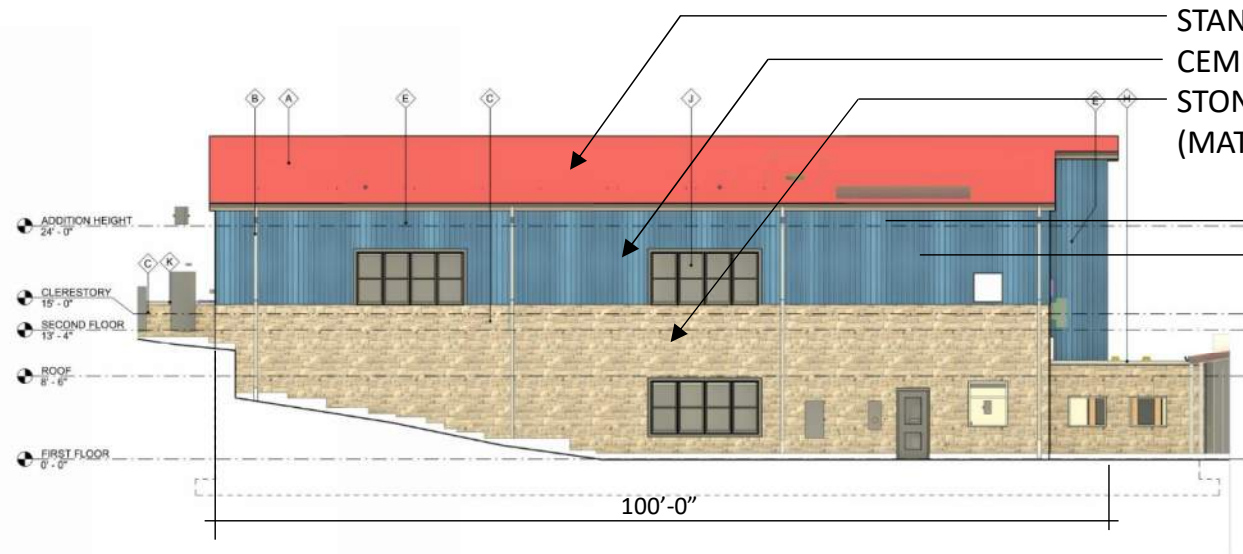




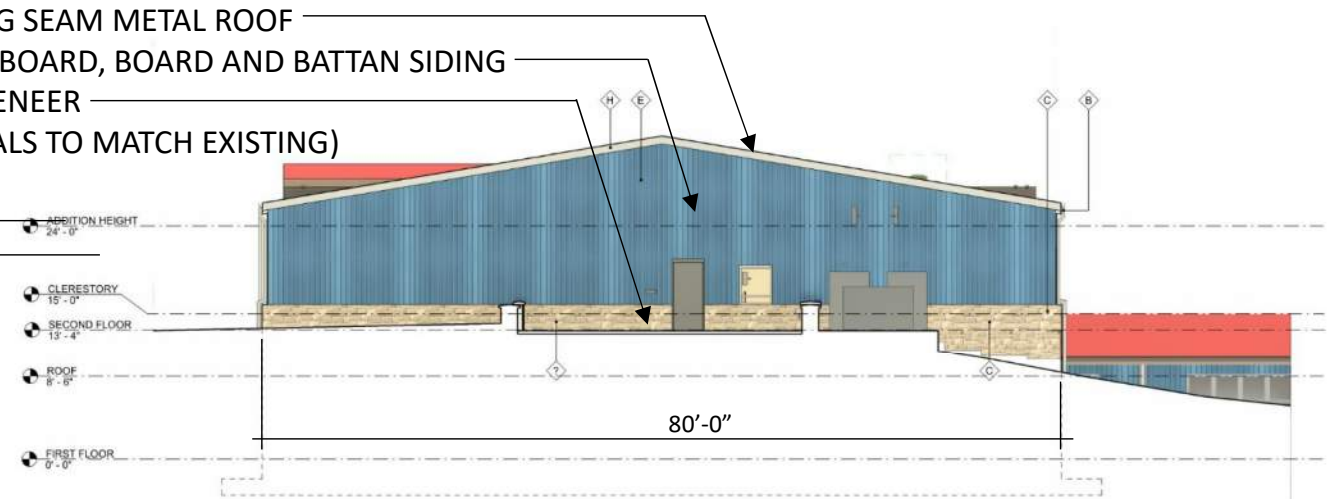
ATHLETIC ADDITION



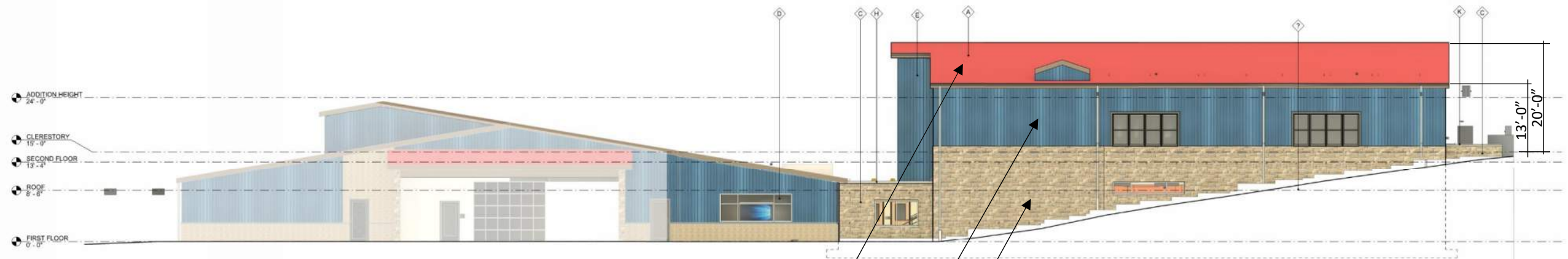




1 | WEST BUILDING ELEVATION  
A201 SCALE: 1/8" = 1'-0"



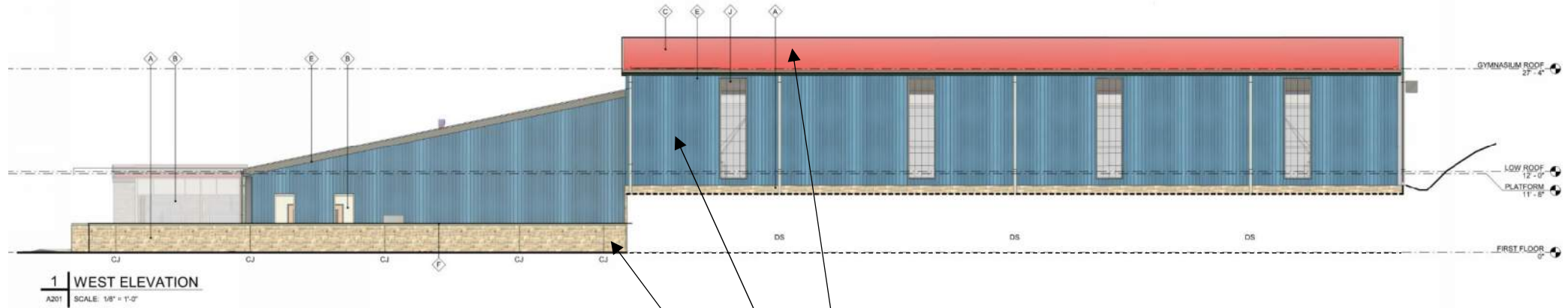
2 | NORTH BUILDING ELEVATION  
A201 SCALE: 1/8" = 1'-0"



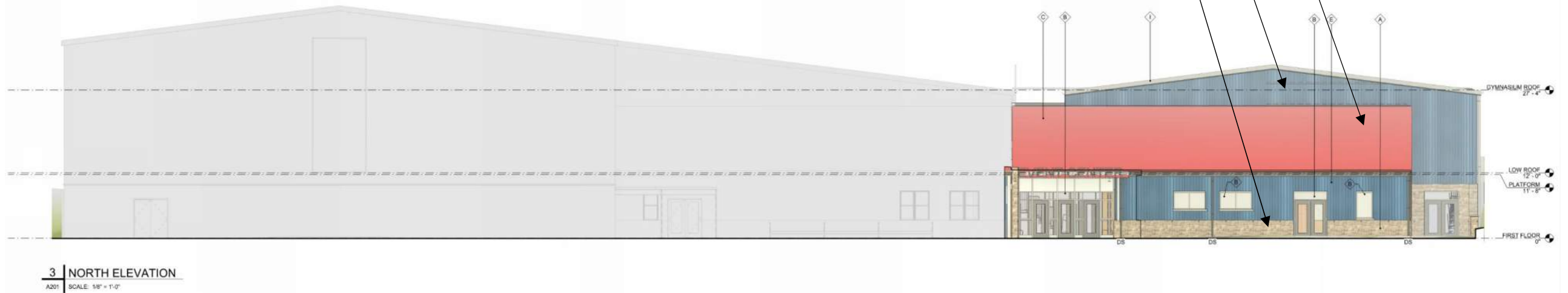
3 | EAST BUILDING ELEVATION  
A201 SCALE: 1/8" = 1'-0"

STANDING SEAM METAL ROOF  
CEMENT BOARD, BOARD AND BATTAN SIDING  
STONE VENEER  
(MATERIALS TO MATCH EXISTING)





METAL PANEL ROOF  
METAL SIDING  
STONE VENEER  
(MATERIALS TO MATCH EXISTING)





# Neighborhood Academy

Site Logistics Plan

## Legend

709 N Aiken Ave



Google Earth

Image Landsat 7/2000-2015

300 ft





# SUSTAINABILITY AND STORMWATER MANAGEMENT SUMMARY

## Proposed Underground tanks

- MRC Volume tank: ACO StormBrixx SD 1.5 Layers 40' x 20' x 4.50'
- Rate Control Tank: ACO Strombrixx SD 2.5 Layers 47.50'x 30' x 7.50'

## Volume Control

Existing Conditions Runoff Volume = 2,838 cf

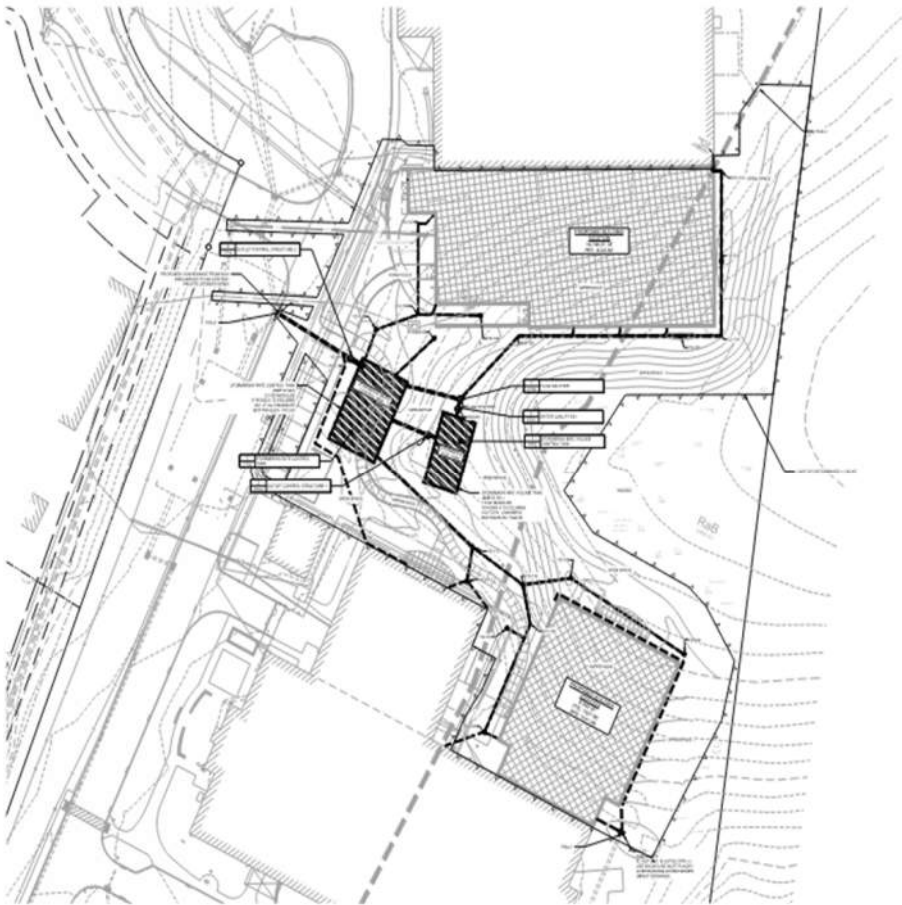
Proposed Conditions Runoff Volume = 7,117 cf

Required Volume Storage = 4,279 cf

**Provide Volume Storage = 4,596 cf**

## Rate Control

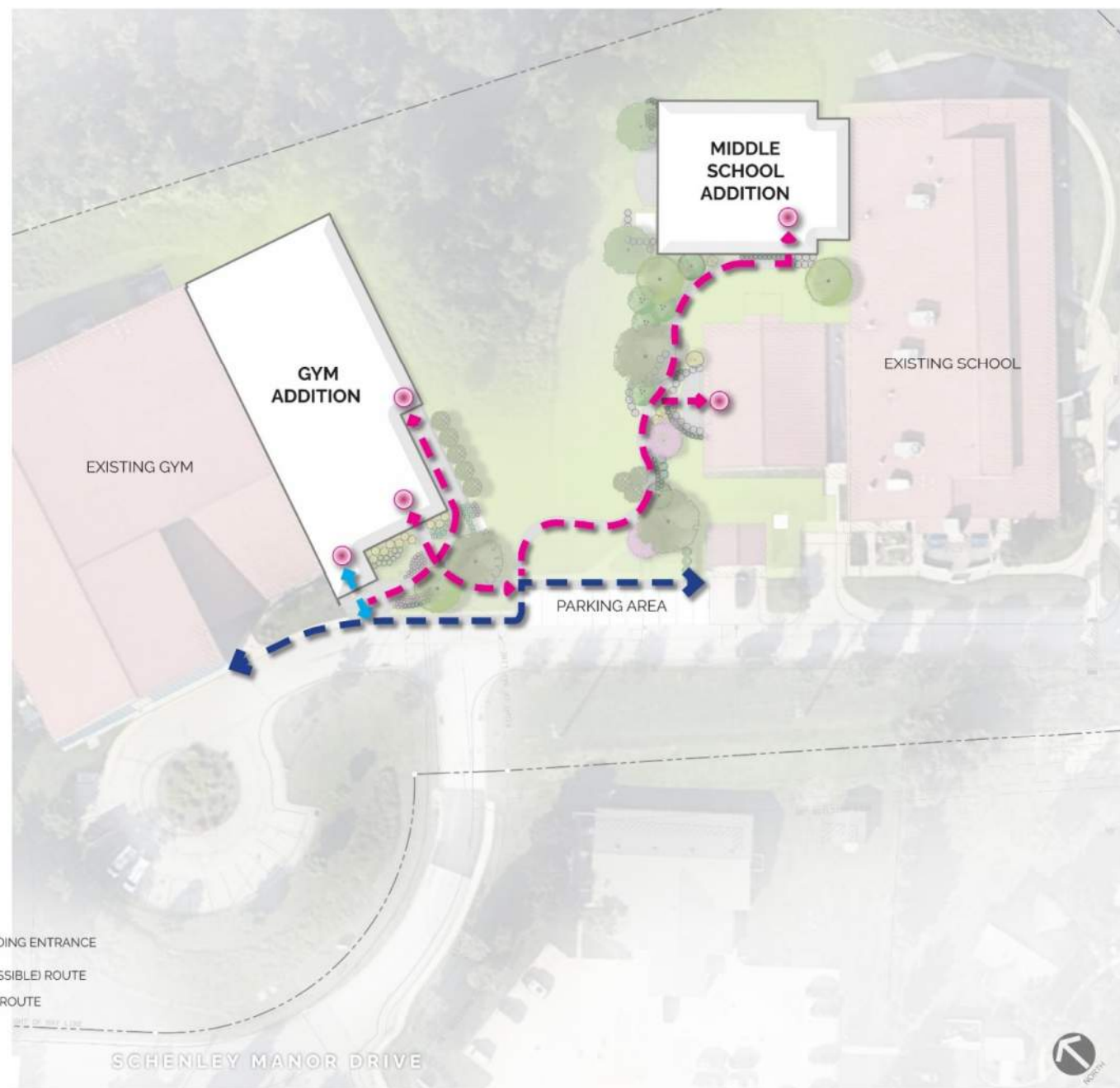
Storm Event	Pre-Conditions (cfs)	Post Conditions (cfs)	Δ Peak Rate (cfs)
1-Year	1.00	0.89	<b>-0.11</b>
2-Year	1.47	1.03	<b>-0.44</b>
5-Year	2.20	2.02	<b>-0.18</b>
10-Year	2.87	2.70	<b>-0.17</b>
25-Year	3.87	3.61	<b>-0.26</b>
50-Year	4.74	4.57	<b>-0.17</b>
100- Year	5.67	5.43	<b>-0.24</b>





**LEGEND**

-  PEDESTRIAN BUILDING ENTRANCE
-  UNIVERSAL (ACCESSIBLE) ROUTE
-  NON-ACCESSIBLE ROUTE
-  PUBLIC ROUTE





## COMMUNITY ENGAGEMENT PROCESS

IN MAY OF 2024, THE NEIGHBORHOOD ACADEMY HELD 2 SEPARATE COMMUNITY ENGAGEMENT MEETINGS. POSTCARDS WERE DISTRIBUTED TO THE NEIGHBORS AND NEIGHBORHOODS SURROUNDING THE SCHOOL PROPERTY.

THE FIRST WAS HELD ON MONDAY, MAY 13. THIS MEETING WAS HELD IN PERSON AS WELL AS VIRTUAL. THE NEIGHBORHOOD ACADEMY RECEIVED ONE COMMENT IN VIRTUAL CHAT BOX THAT THE NEIGHBOR WAS EXCITED TO SEE THE CONTINUED GROWTH OF THE SCHOOL

The SECOND MEETING WAS HELD AT A COMMUNITY CENTER IN STANTON HEIGHTS. NO ONE FROM THE COMMUNITY ATTENDED THE MEETING

## PROJECT TIMELINE

Drawings submitted to PLI	April 17, 2025
Planning Commission Hearing and Action Meeting	May 6, 2025
Anticipated start of construction	Beginning of July, 2025
Anticipated project completion	August 1, 2026