



**ALCOSAN**  
**Wet Weather Pump Station**  
**Planning Commission**  
**Hearing and Action**  
**BDA-2024-07516**

**May 6, 2025**



# Agenda

- Welcome and Introductions
- ALCOSAN Plant Expansion & Clean Water Plan Updates
- Design Plans for the Wet Weather Pump Station
- Project Schedule
- Questions and Answers



# Wet Weather Pump Station Location

Main Pump Station

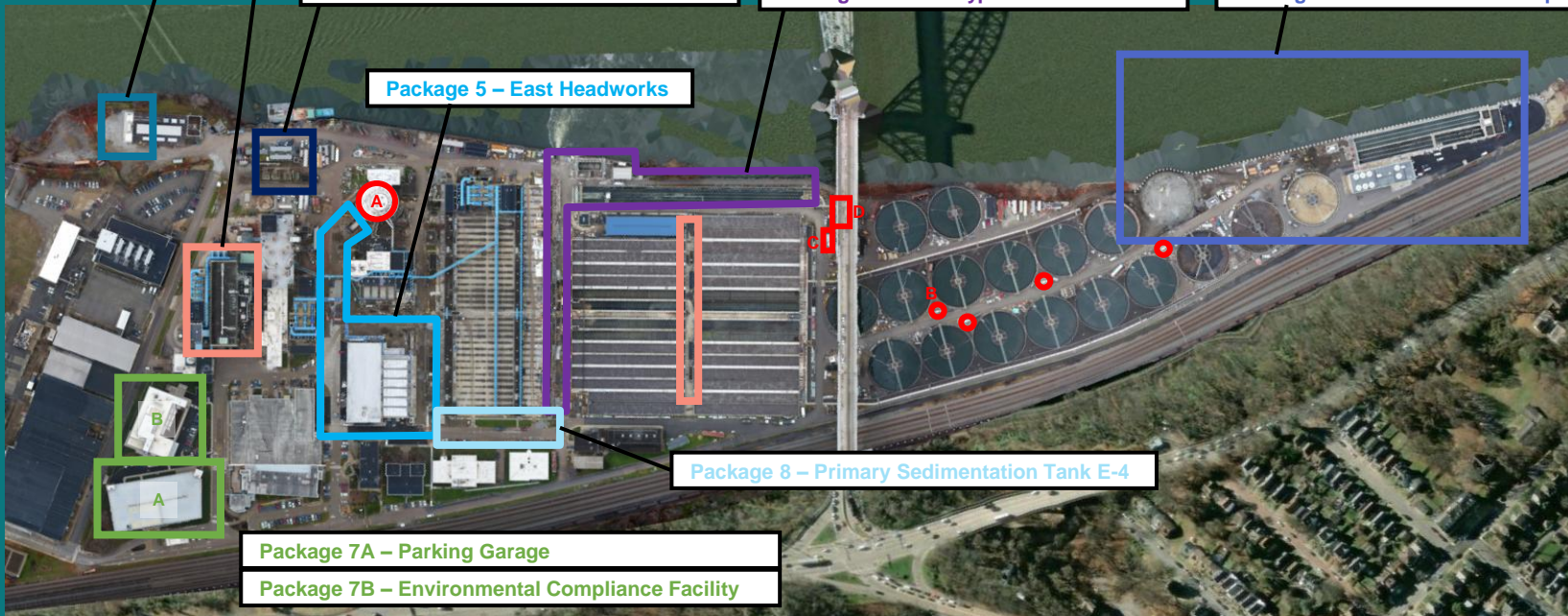
Wet Weather Pump  
Station







### Package 3D – Effluent Flushing Water (EFW) Improvements





# Wet Weather Pump Station





# Wet Weather Pump Station Description

## Existing Use

- Wastewater Treatment Plant
- 3300 Preble Avenue

## Proposed Use

- No Change in use

## Context

- Zoning Code – 905.04 RIV
- RIV-GI zoning district
- Marshall Shadeland Neighborhood
- RCO: Marshall Shadeland Civic Group
- Nonresidential
- Water-dependent use

## Regulatory Review Status

- Responded to design review comments
- RCO DAM Meeting completed 3/4/2025
- CDAP – 4/1/2025 completed
- No Variances

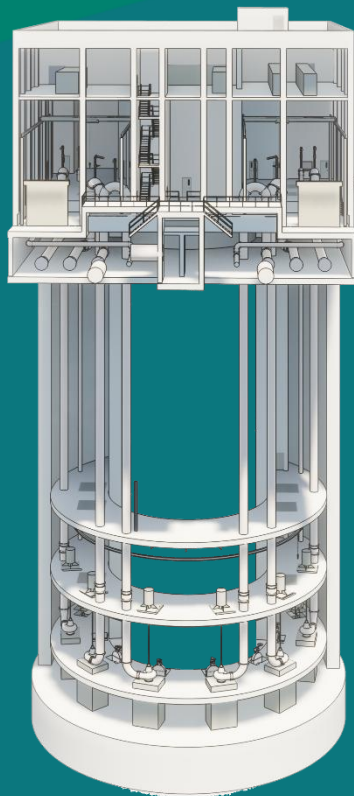


*Presented to Riverlife 3/21 and received letter of support 3/26*



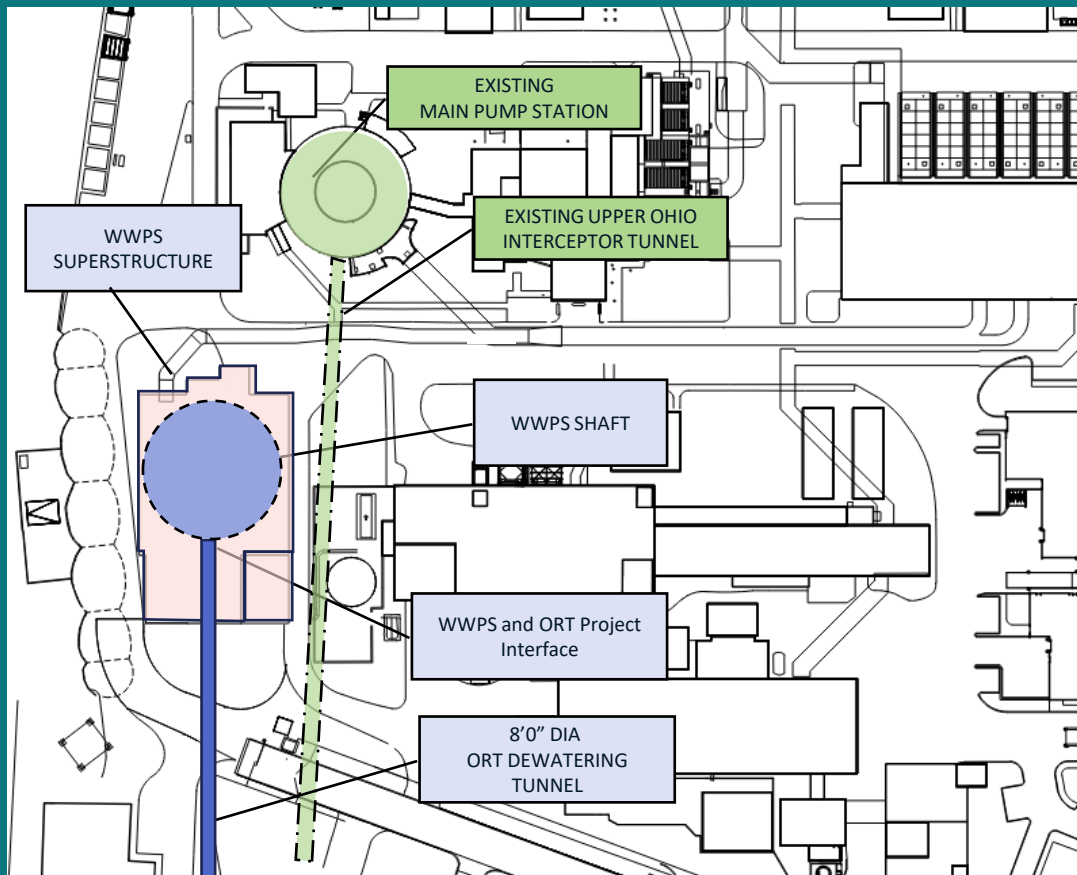


# Site Layout



Above Grade

Below Grade





# Extent of Construction

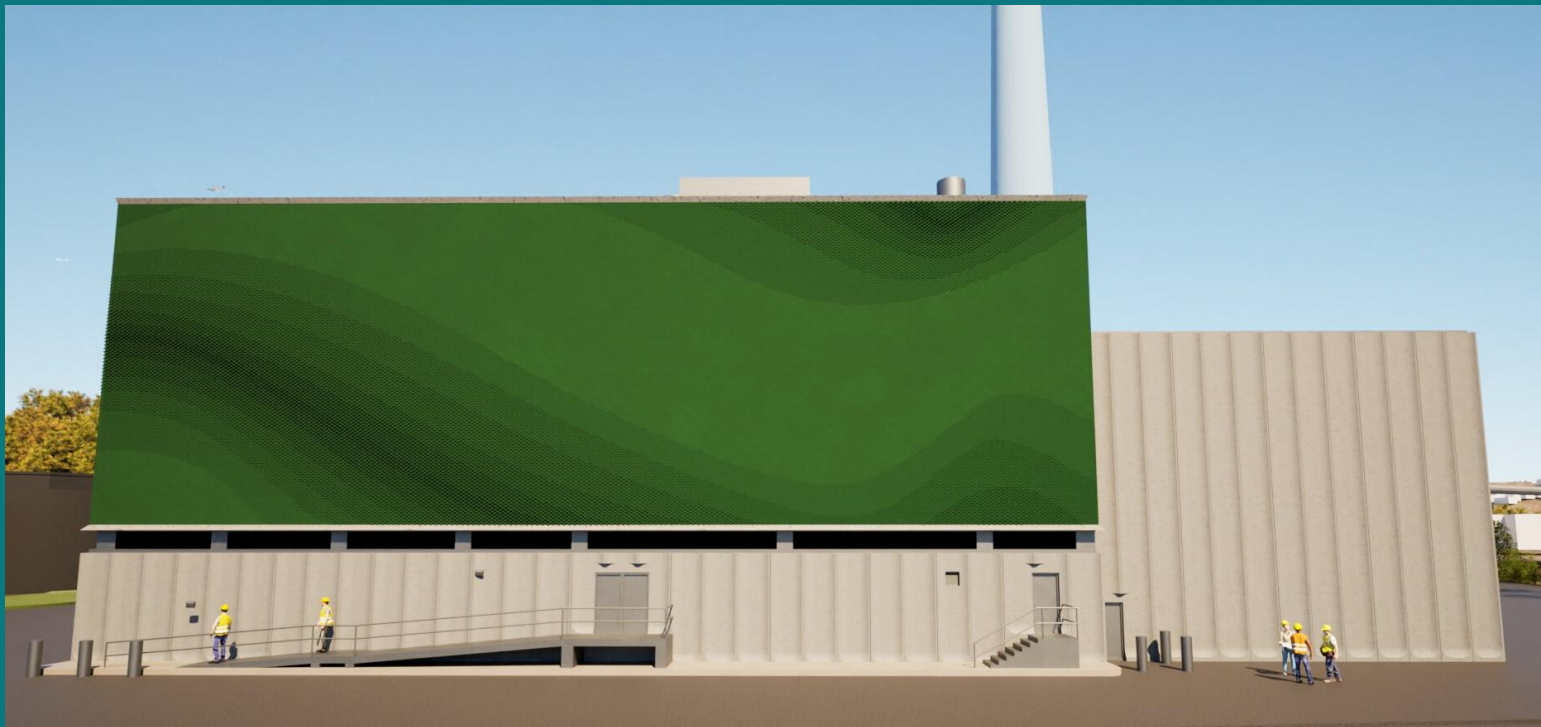
- Wet Weather Pump Station
- 180' deep by 115' diameter shaft and tie-in to Ohio River Tunnel
- Underground structures, conduits, and utilities







# Design Approach: WWPS Exterior



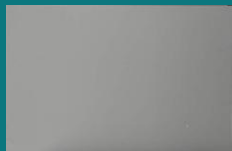


# Design Approach: WWPS Exterior Materials

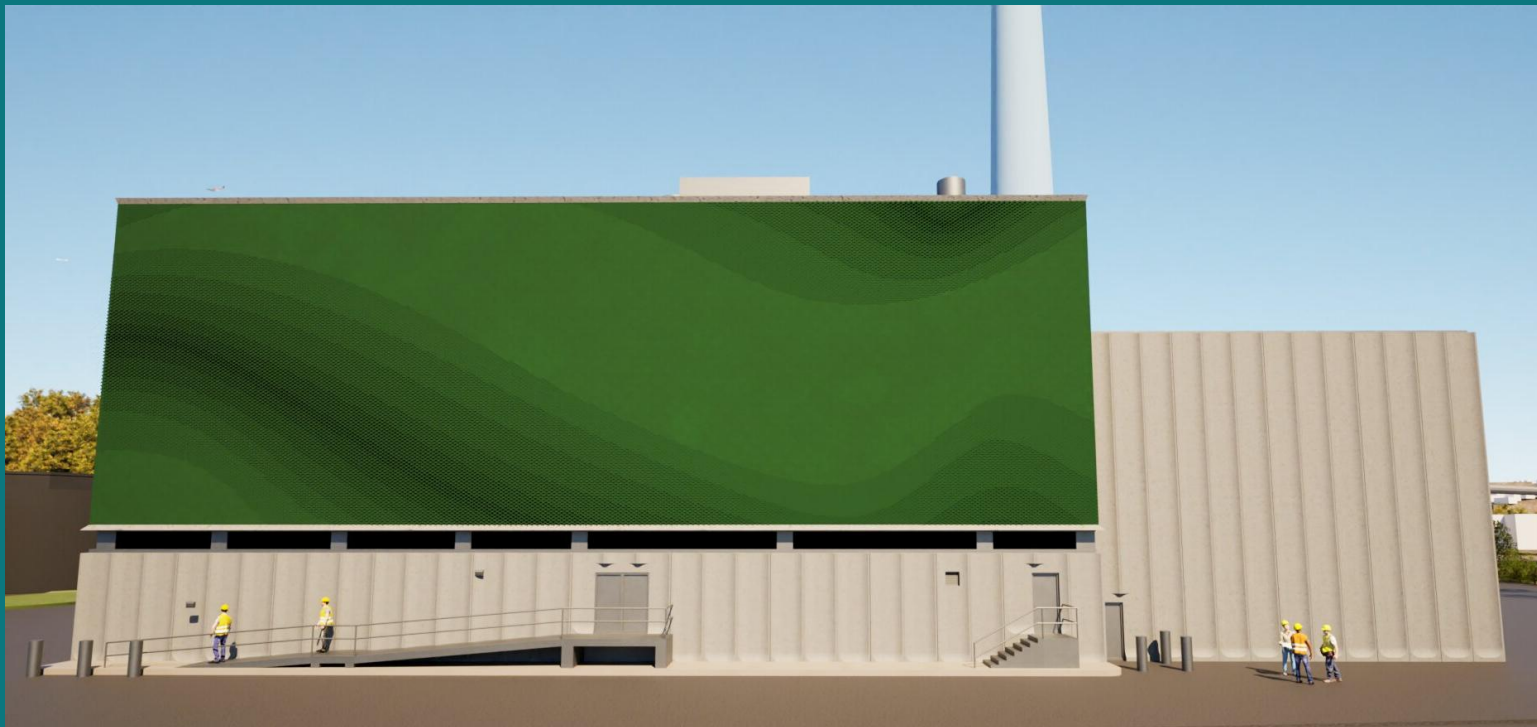
- Green Claycoat Brick



- Gray Metal Panel



- Precast Concrete Panel  
Light Sandblast





# Design Approach: WWPS Brick Shapes

- Standard



- Brick Shape 1



- Brick Shape 2



- Brick Shape 3



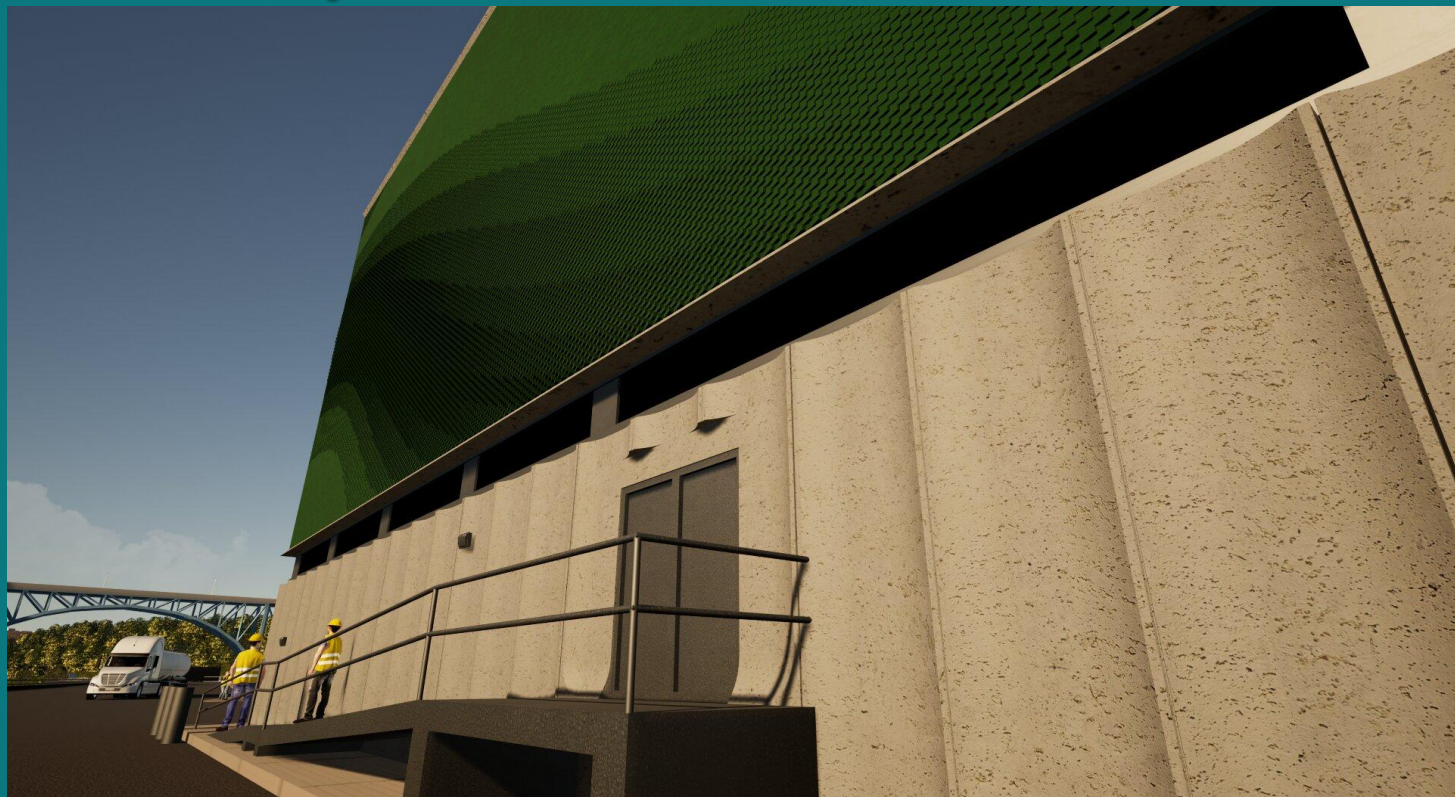
- Brick Shape 4



- Brick Shape 5



- Brick Shape 6







# WWPS View From The River – Looking North





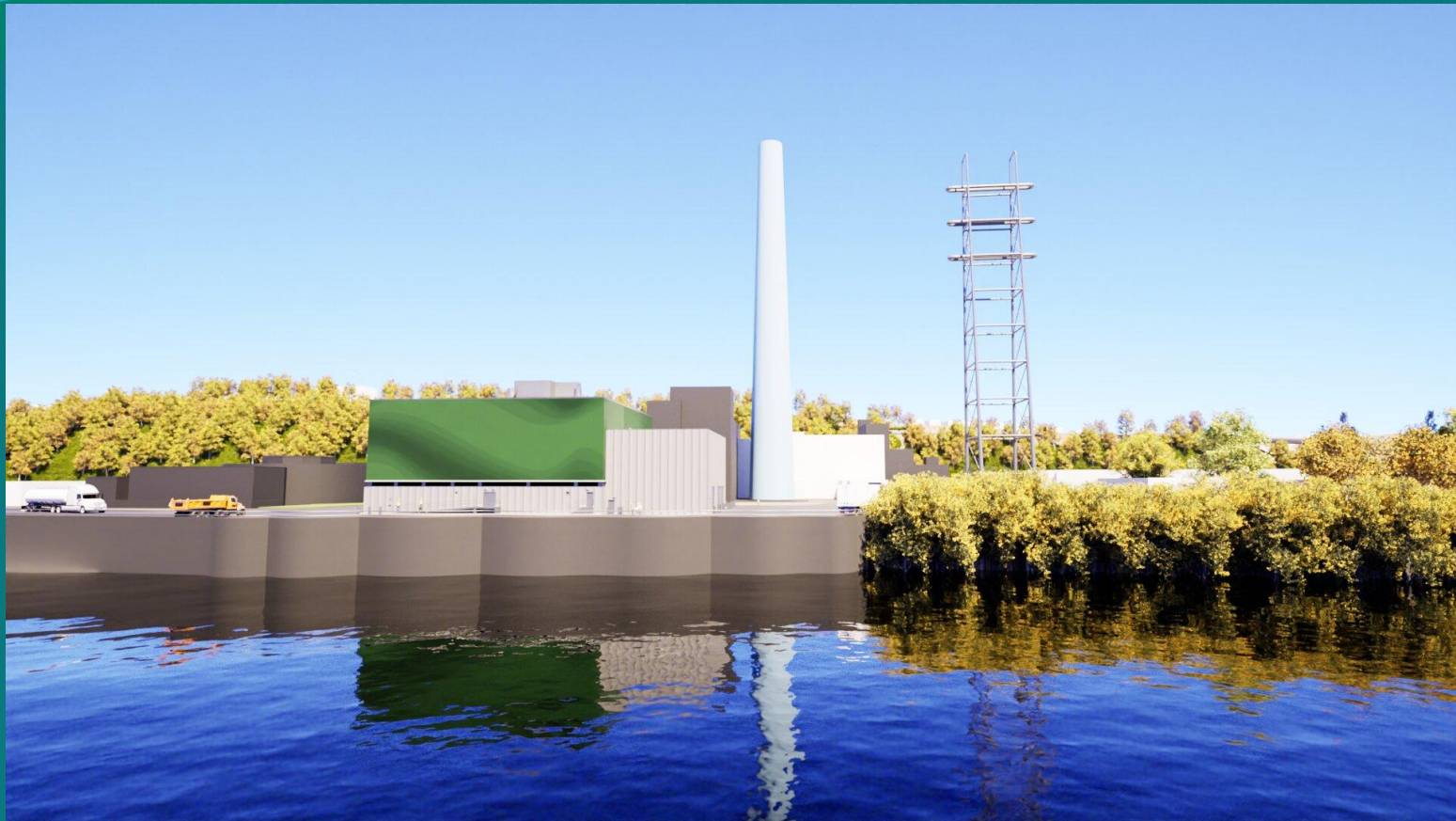


# WWPS View From The River – Looking South





# WWPS View From The River – Looking East





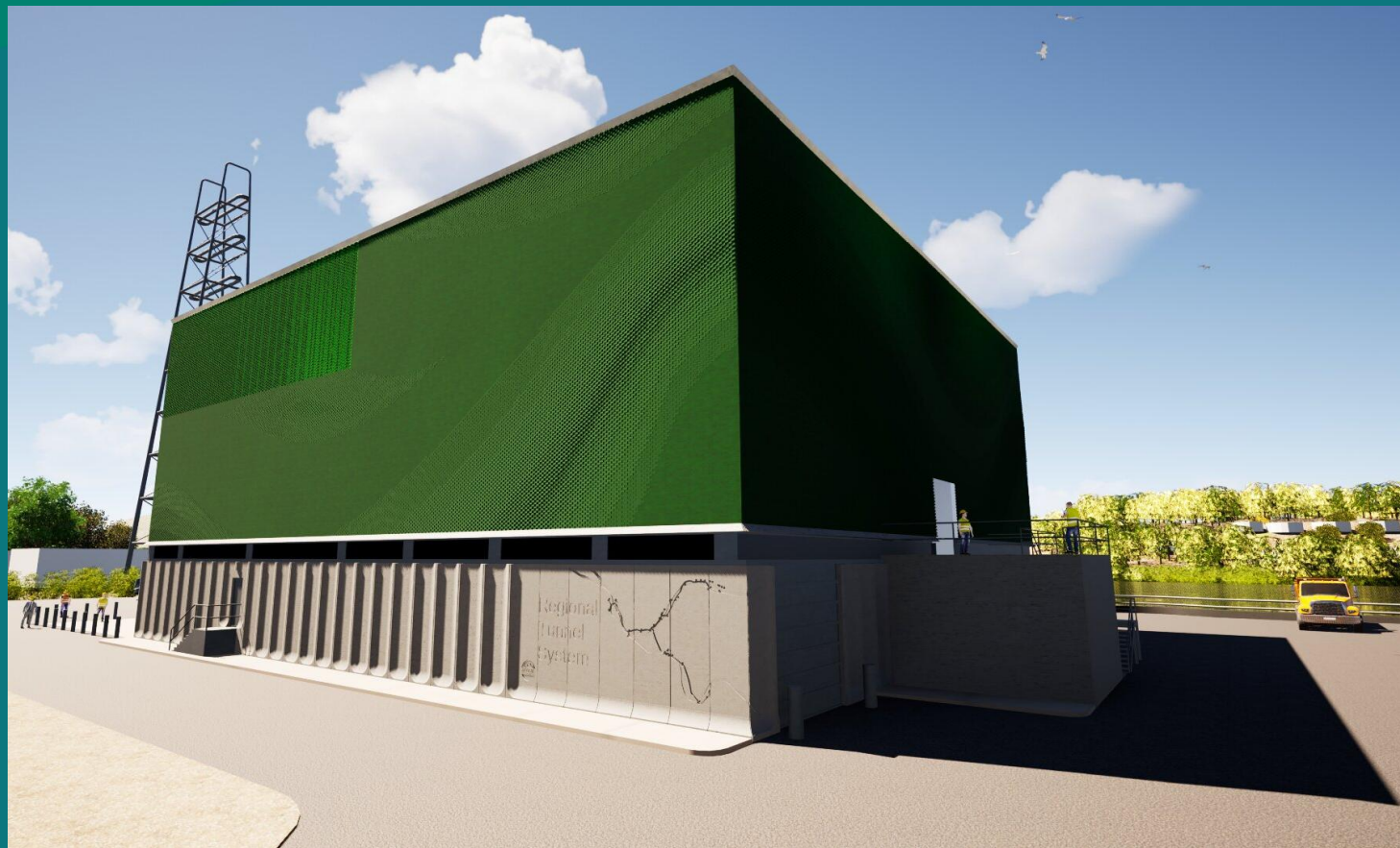
# WWPS View From Tracy Street







# WWPS View From Campus







# WWPS Exterior – Change With Movement





# WWPS Exterior - Change With Light





# WWPS Construction Impacts

Trucks and equipment will enter and exit Woods Run WWTP via Preble Avenue

During shaft construction trucks and equipment will also access the site via Tracy Street

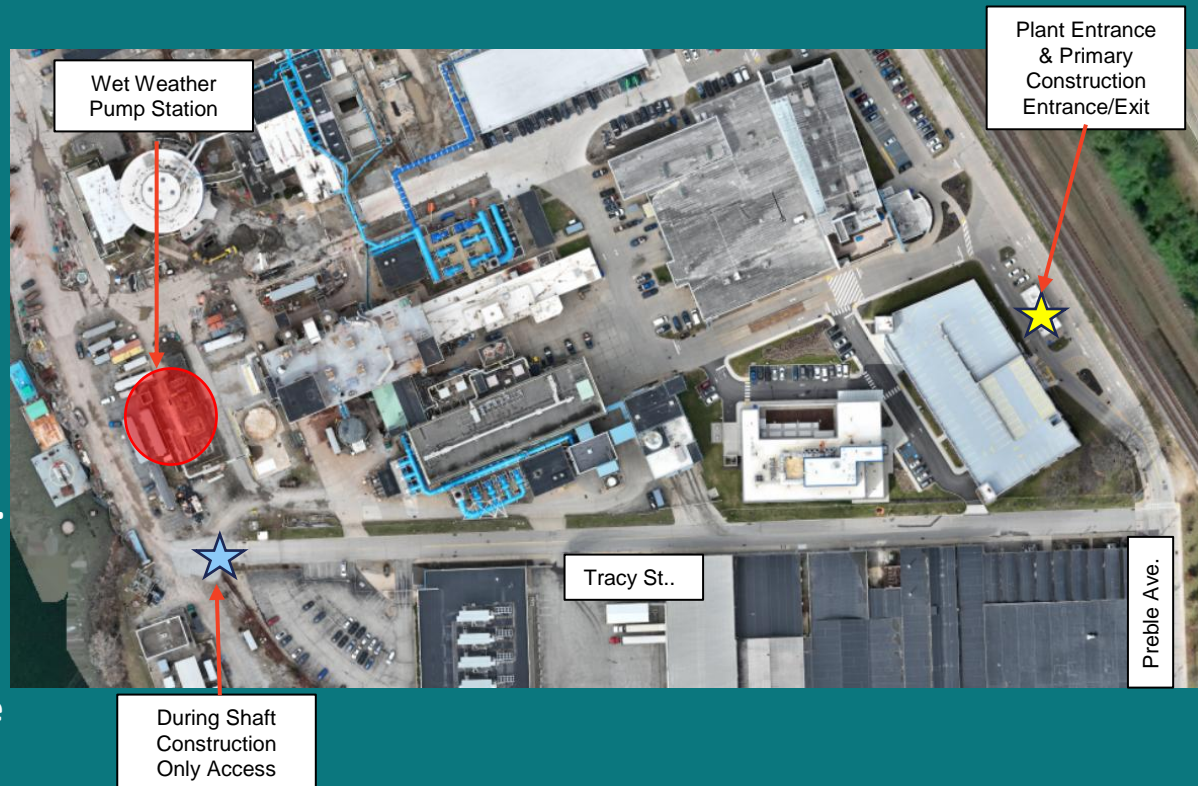
Blasting activities will occur during shaft construction

All work will occur within the facility.

## Project Scheduled Hours

Typical M-F, 7:00 a.m. – 5:00 p.m.

Extended hours may occur during activities such as large slab concrete pours and the shaft construction





# Schedule / Next Steps

Project/Phase	Anticipated Schedule
Key Activities, Meetings, Hearings	<i>Pre-Application Meeting with City Planning – 1/18/2024</i> <i>DAM with Marshall-Shadeland 3/4/2025</i> <i>Contextual Design Advisory Panel – 4/1/2025</i> <i>Planning Commission Briefing – 4/22/2025</i> <b>Planning Commission Hearing and Action – 5/6/2025</b> PLI Review
Contract Deadlines	100% Design Submittal: <b>April 2025</b> Advertise for Bid: <b>May 2025</b> Construction NTP: <b>Late Fall 2025</b> Anticipated Completion: <b>Late 2029</b>





# Questions / Comments?

Contact:

Jeff Argyros, P.E.

ALCOSAN Manager of Capital Projects

(412) 734-6281

[Jeff.Argyros@alcosan.org](mailto:Jeff.Argyros@alcosan.org)