

# Arts Landing Pittsburgh Cultural District

DCP-BDA-2025-00264

February 25, 2025 - Planning Commission Briefing



fieldoperations



- June 2024 - present | Public & Stakeholder Engagement**
- Nov 14, 2024 | Development Activities Meeting (DAM)**
- Nov 15, 2024 | Pre-Application Meeting, City of Pittsburgh**
- Dec 10, 2024 | Planning Commission (Goodyear Demo), City of Pittsburgh**
- Feb 25, 2025 | Planning Commission Hearing, City of Pittsburgh**





DOWNTOWN REVITALIZATION

NEW ON 4

PITTSBURGH'S ACTION NEWS 4

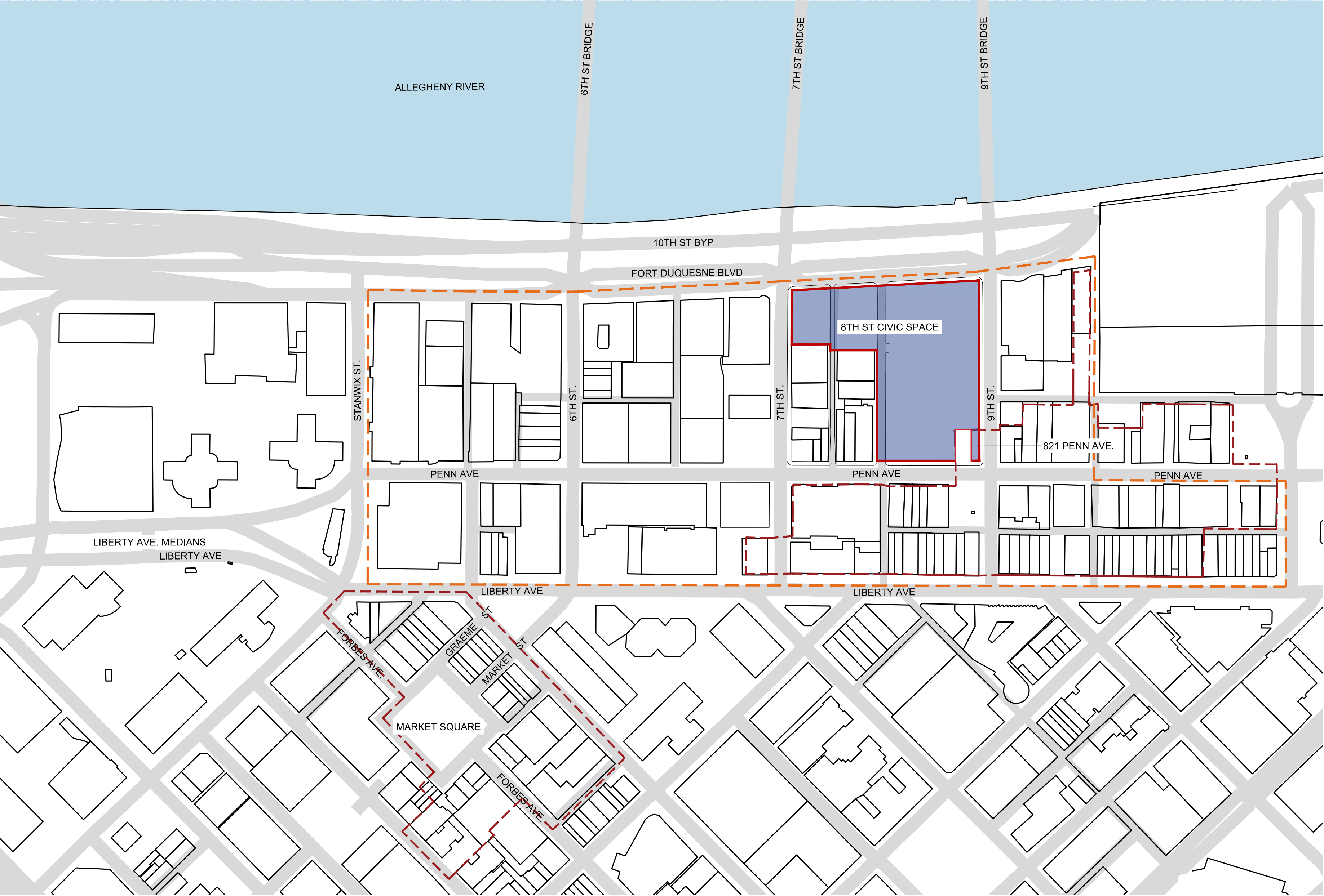


KDKA

CBS NEWS  
PITTSBURGH







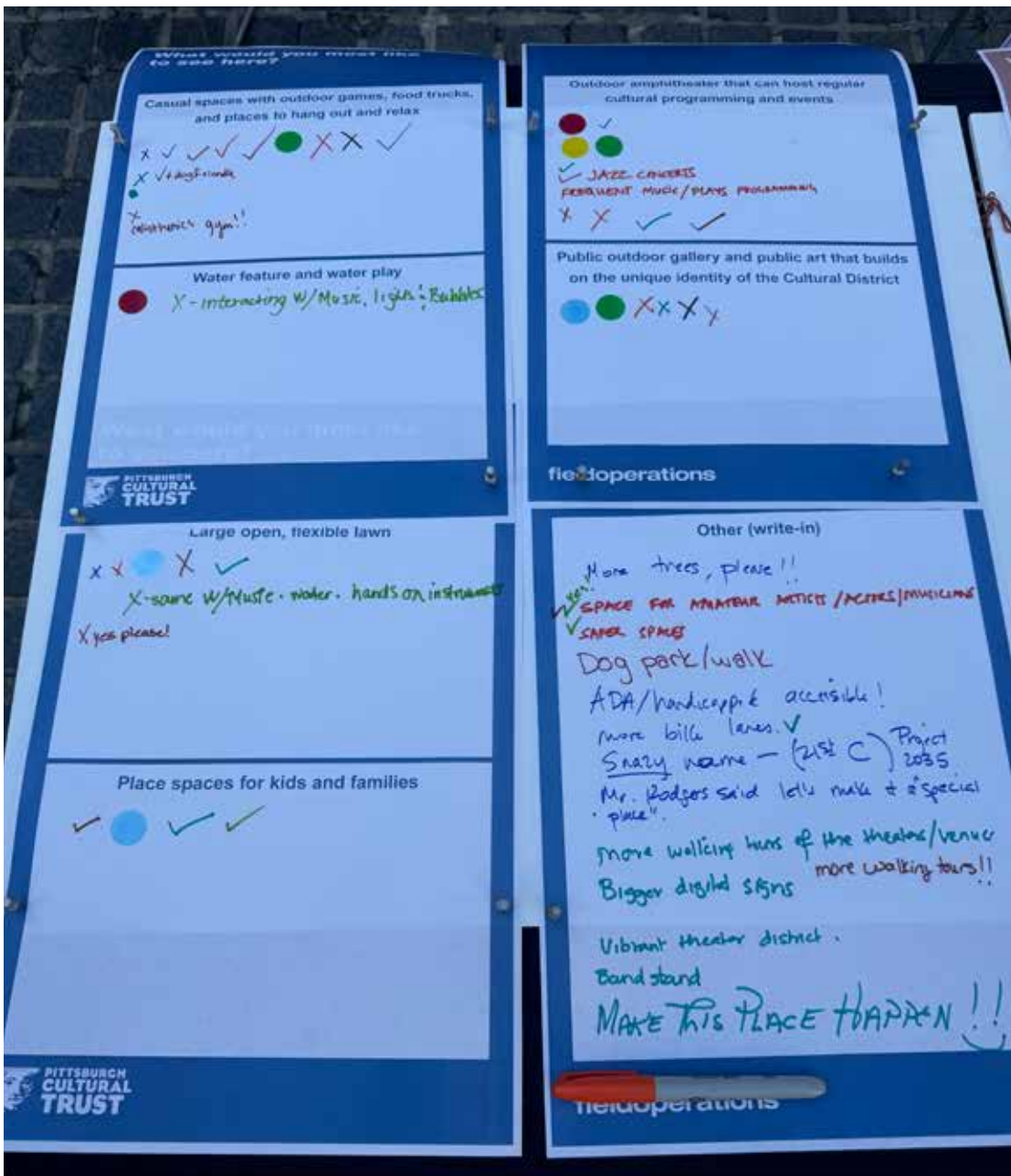
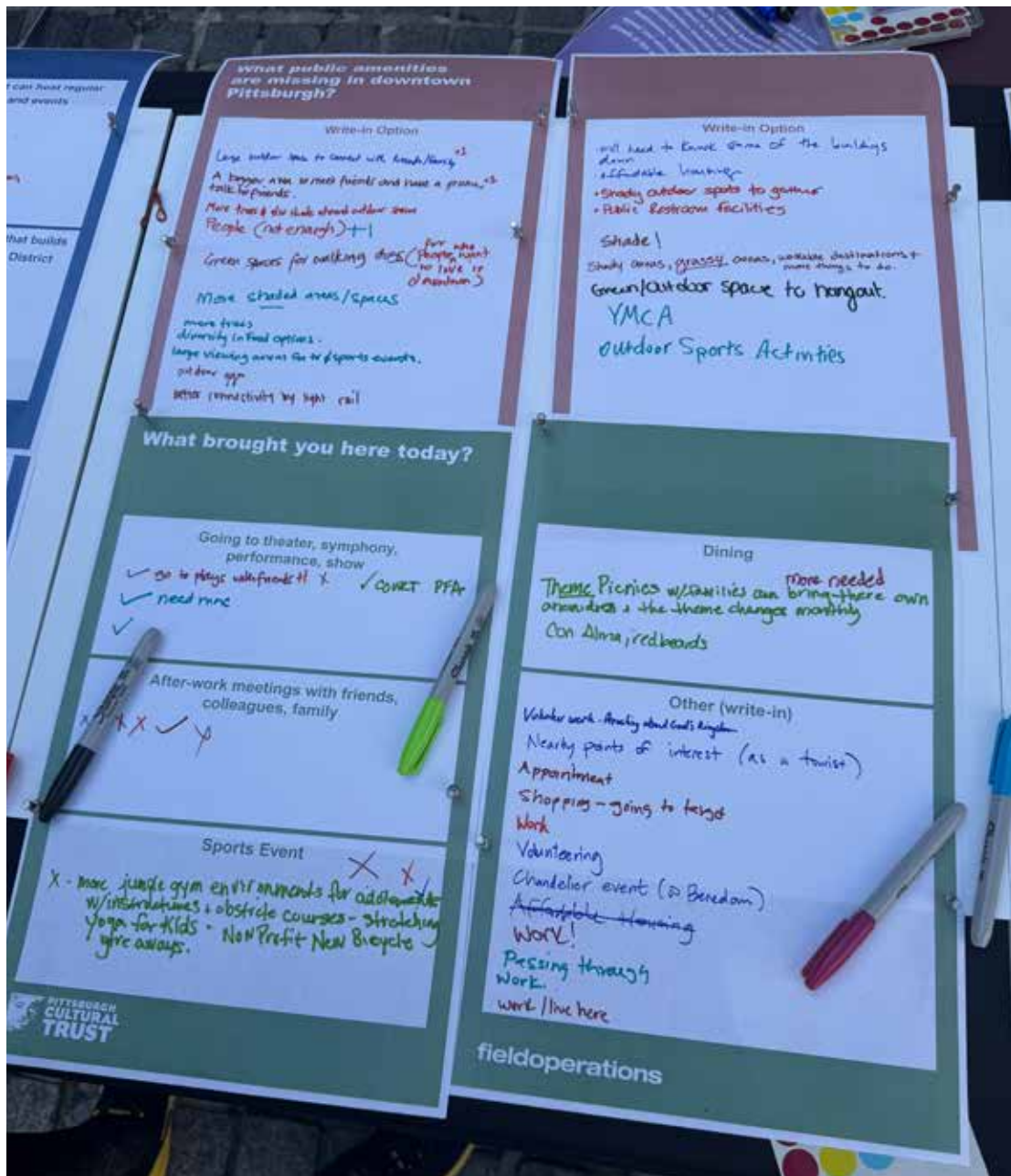
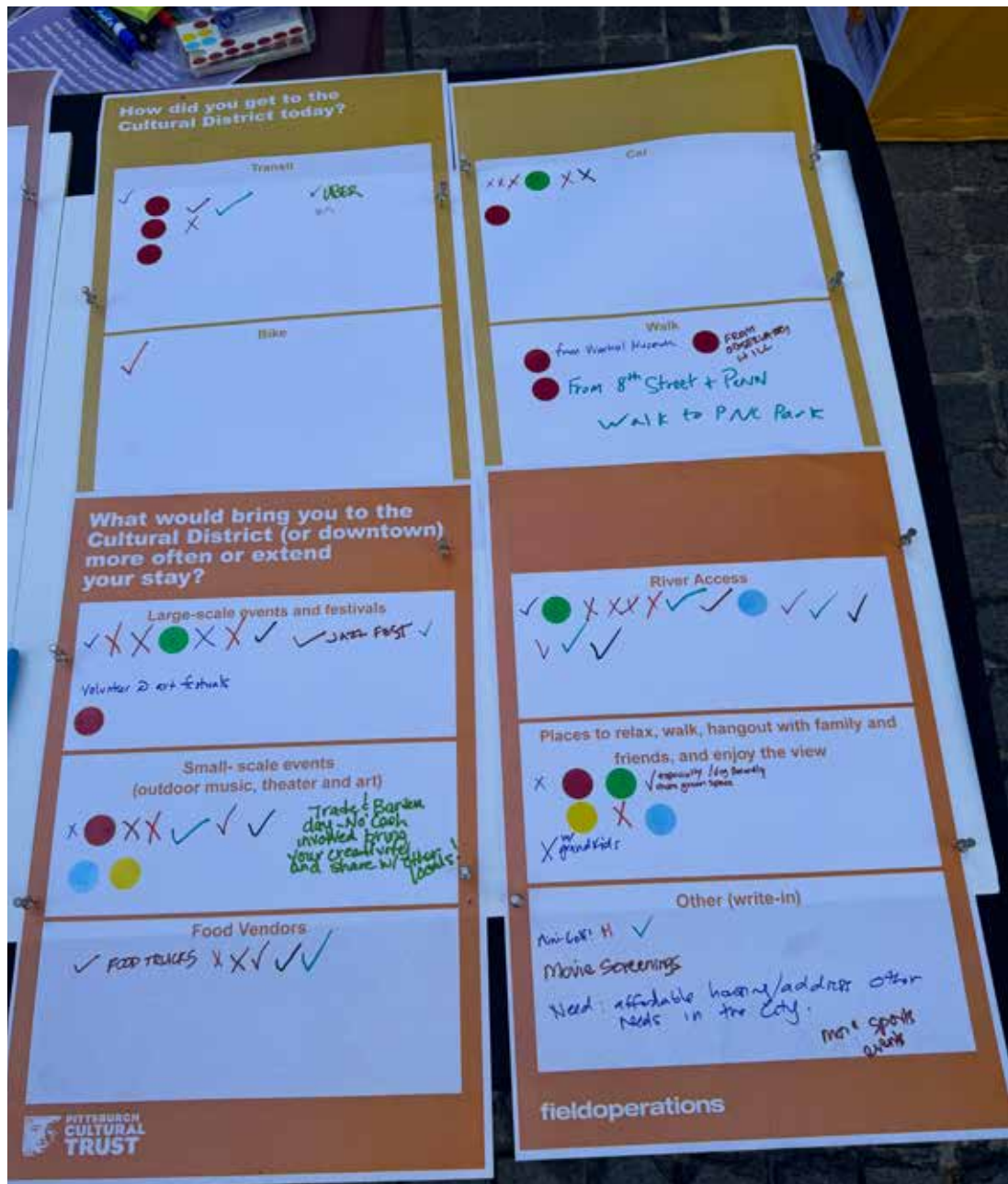
**LEGEND**

-  CULTURAL DISTRICT
-  HISTORICAL DISTRICT

**CLIENT: PCT**

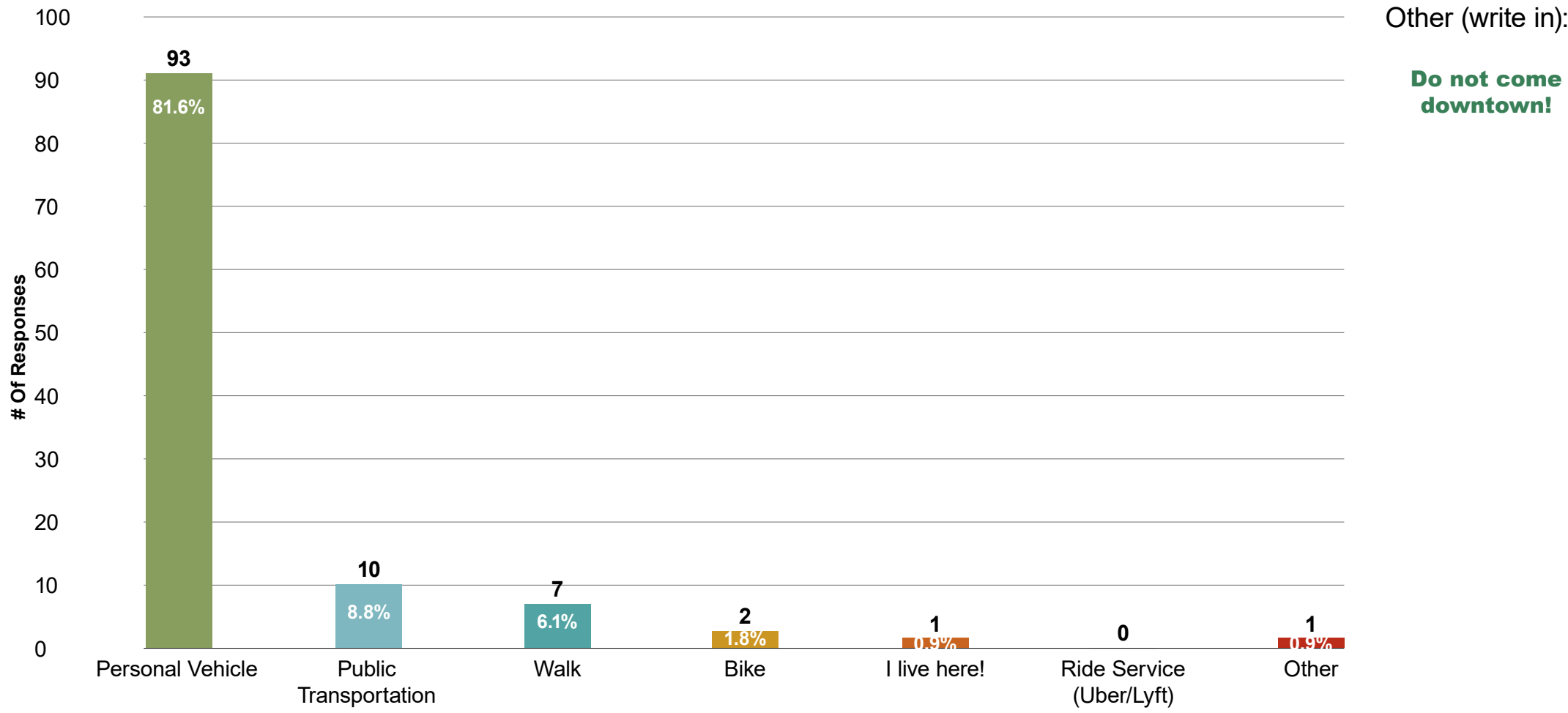
-  8th St. Block Civic Space



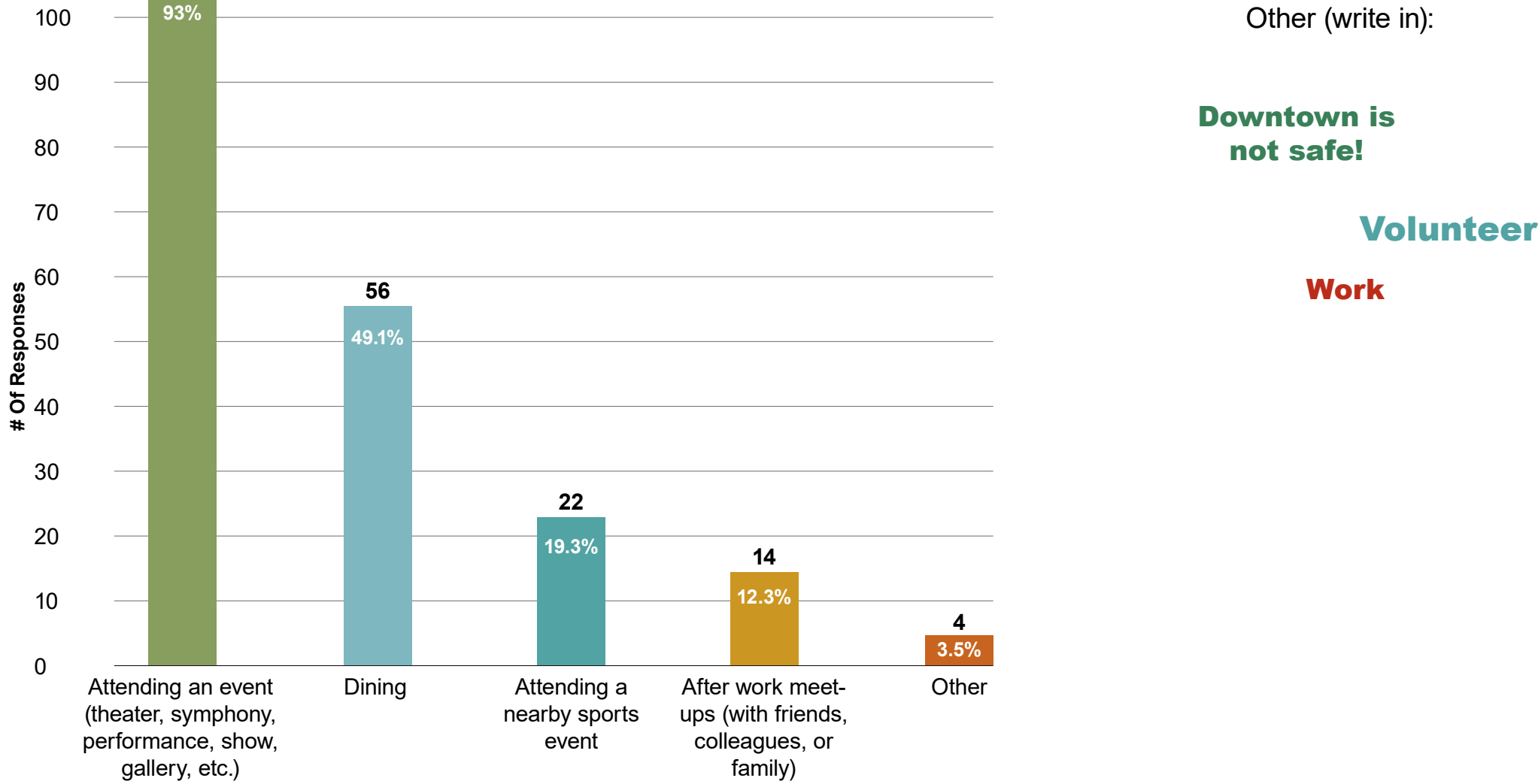




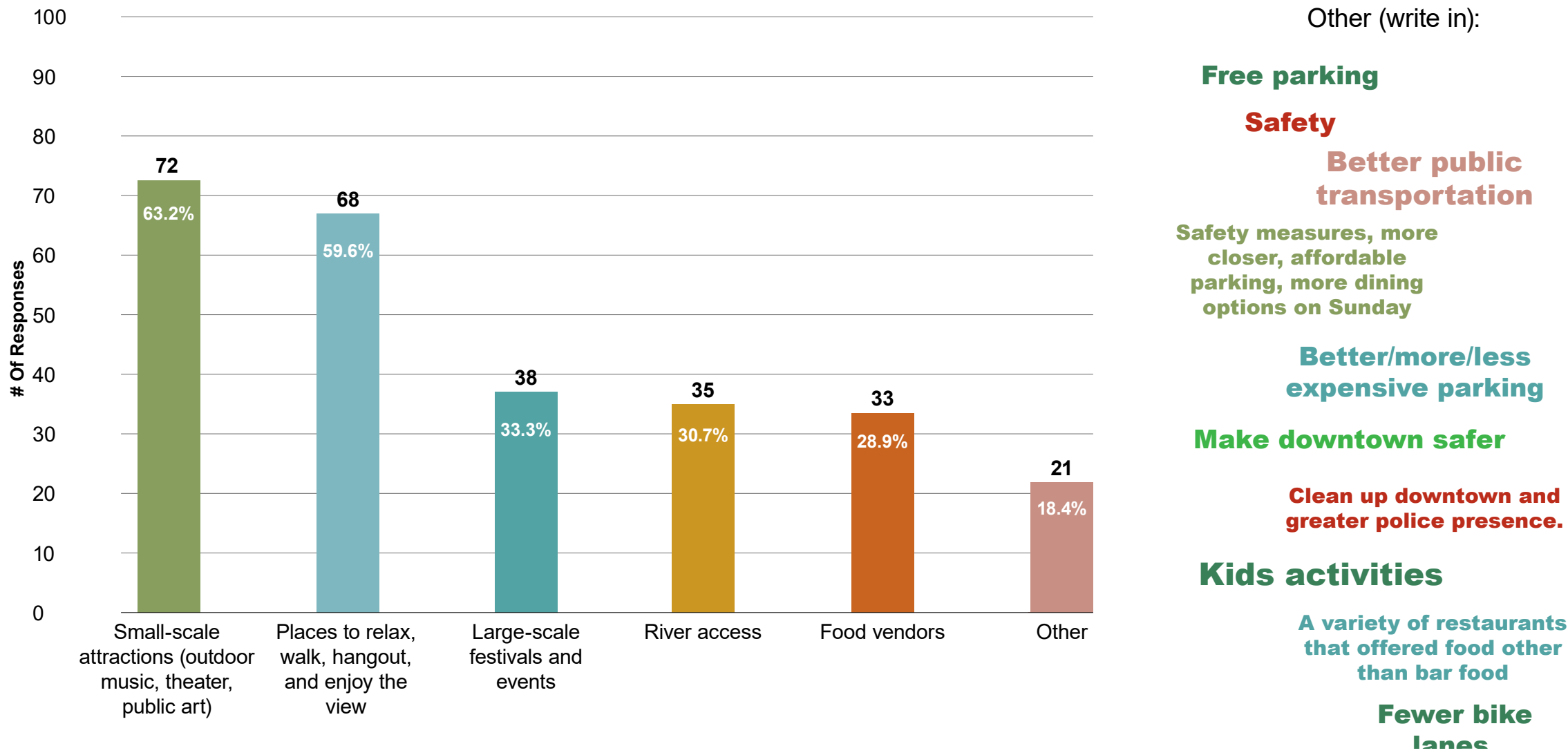
**Question #1** How do you typically commute to the Cultural District? (114 resp.)



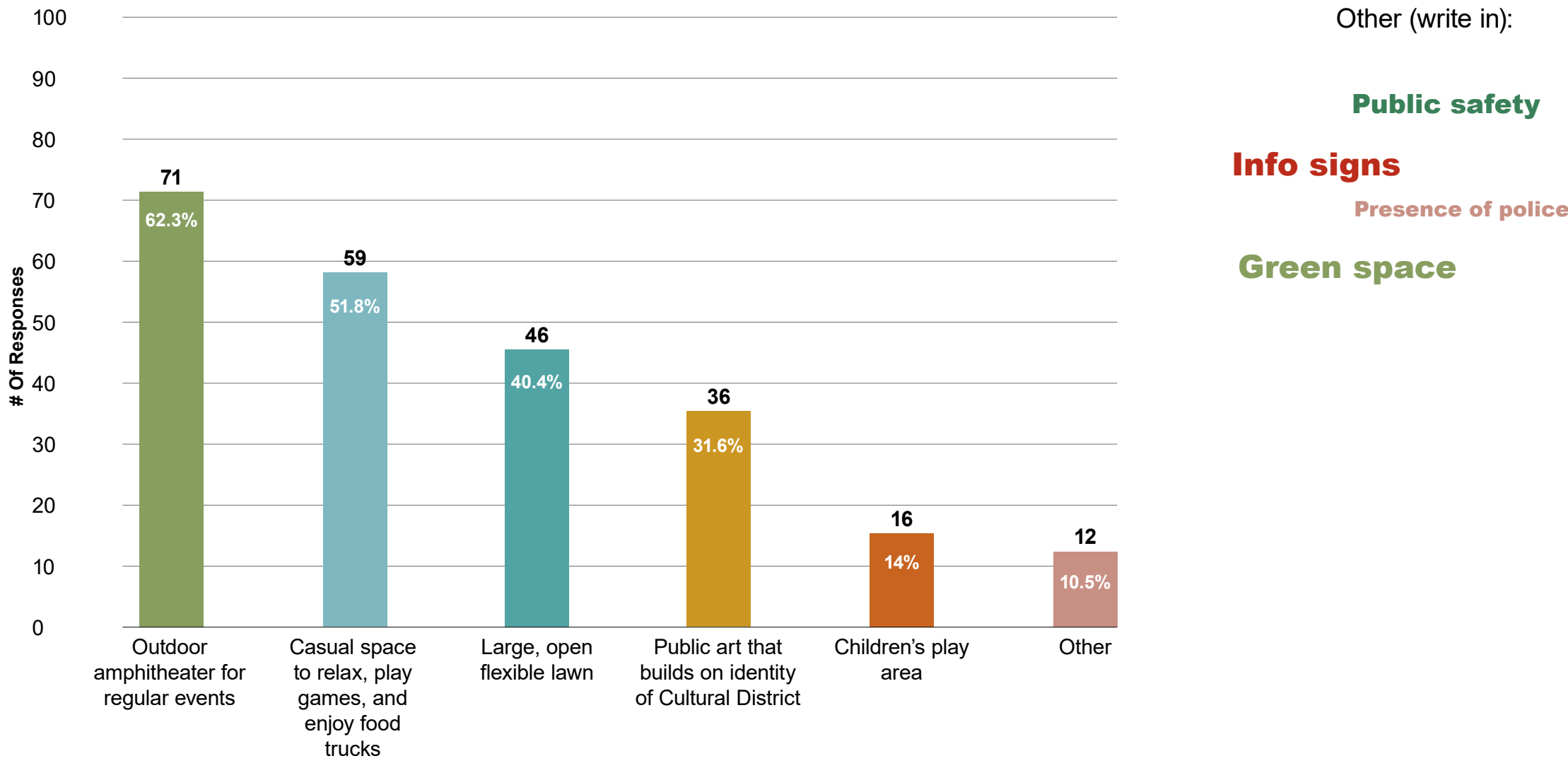
**Question #2** Why do you typically visit the Cultural District? (114 resp.)



**Question #3** What would attract you to the Cultural District more often, or what would extend your stay when you visit? (114 resp.)



**Question #5** What would you most like to see added to the new civic space on the 8th Street Block between Penn & Liberty Avenues? (114 resp.)





- 1. Create a Civic Destination for Downtown and the Cultural District**
- 2. Provide a variety of spaces for residents and visitors to the neighborhood**
- 3. Provide opportunities for play and recreation**
- 4. Create flexible lawn space that can accommodate cultural events**









8th ST

Existing Goodyear Building to be demolished

Existing 8th St 'Backyard'

8TH ST BLOCK FROM PENN AVE



Existing Goodyear Building to be demolished

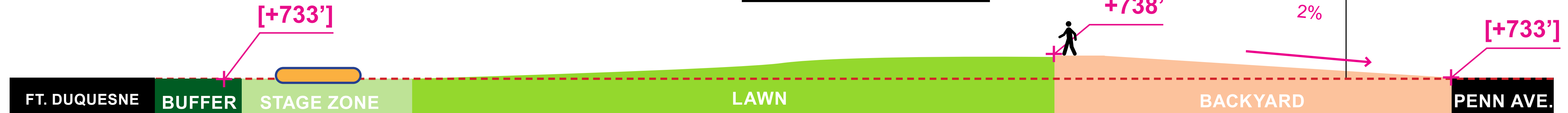
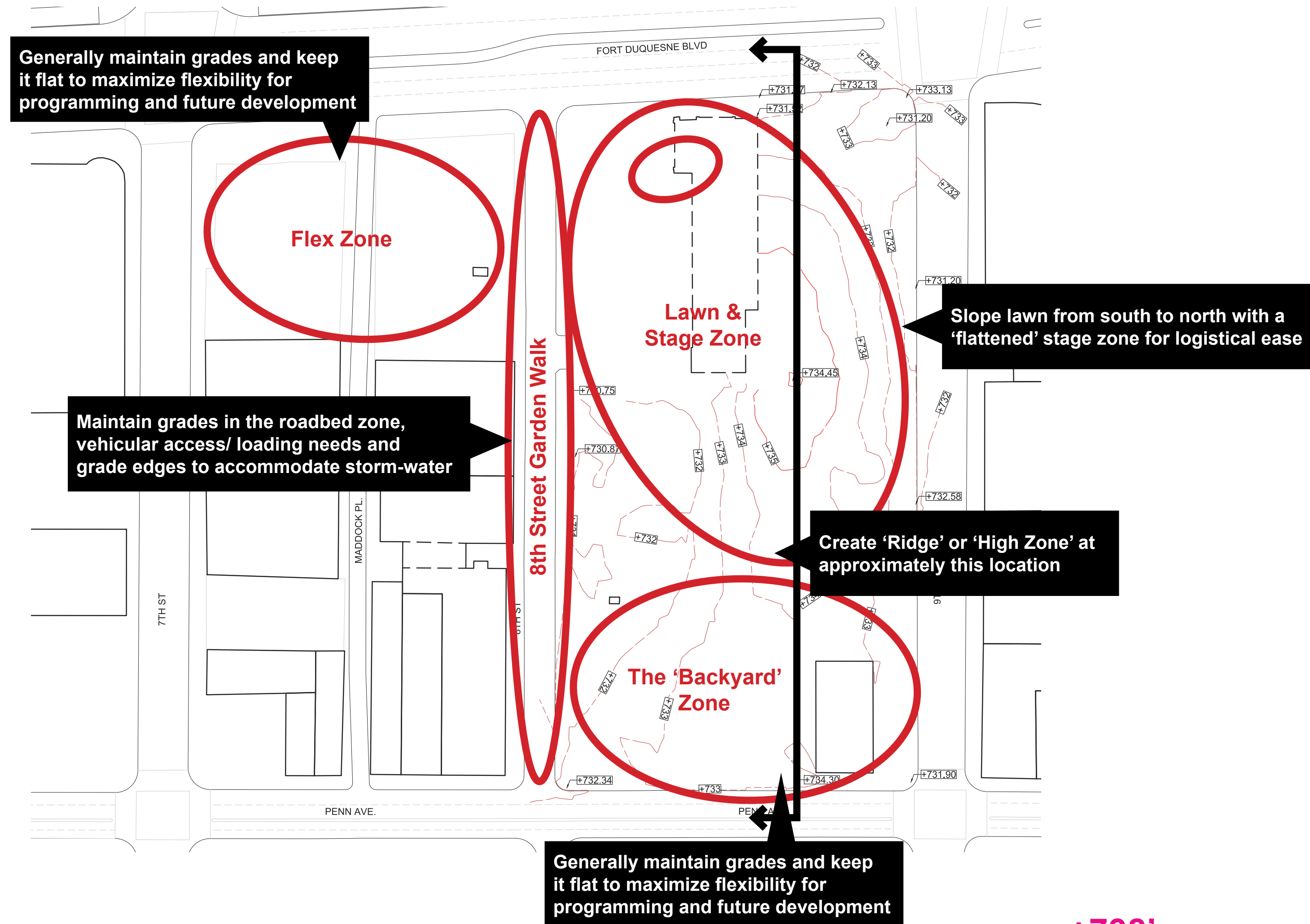


Existing Asphalt Lot





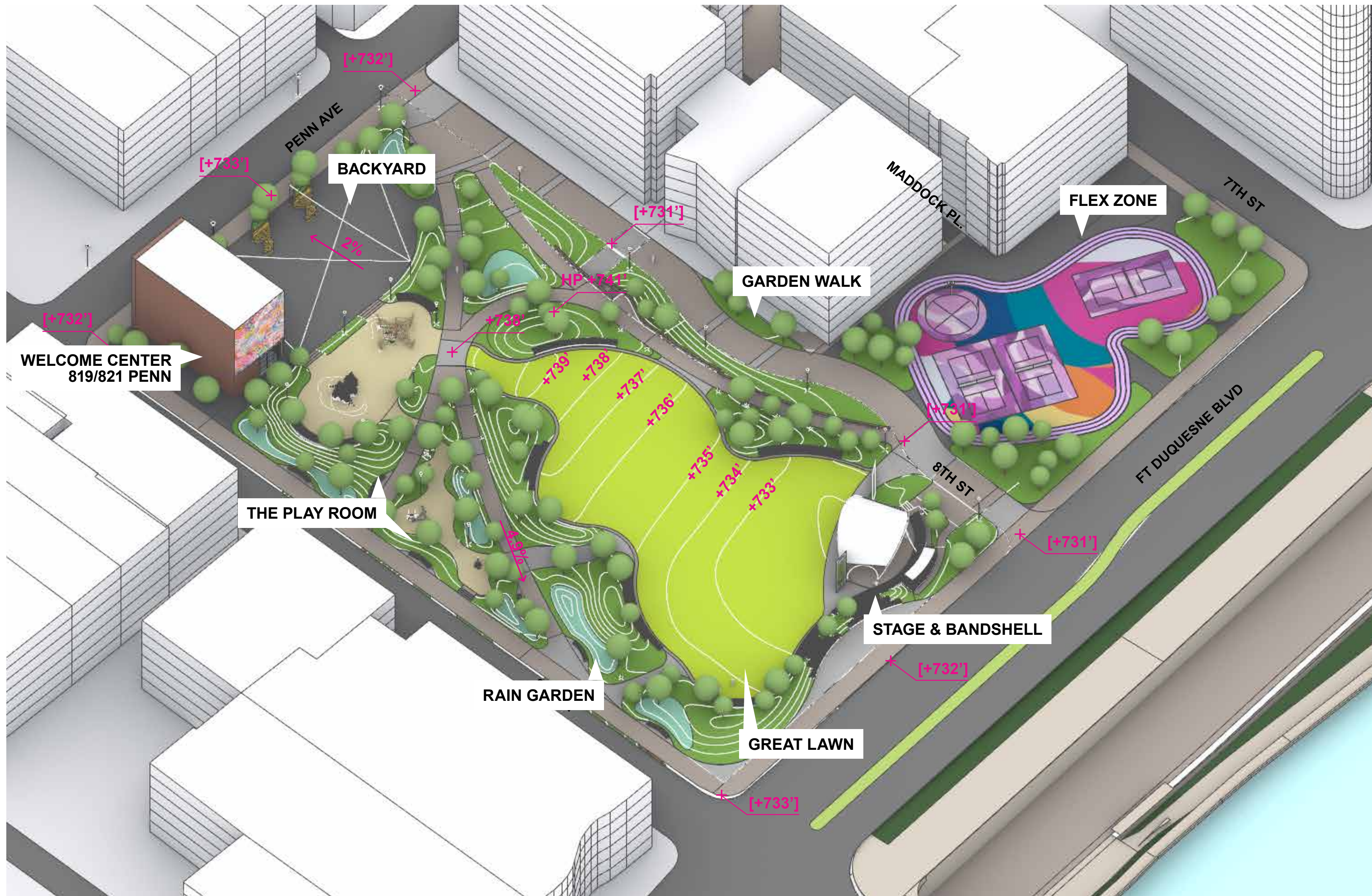




















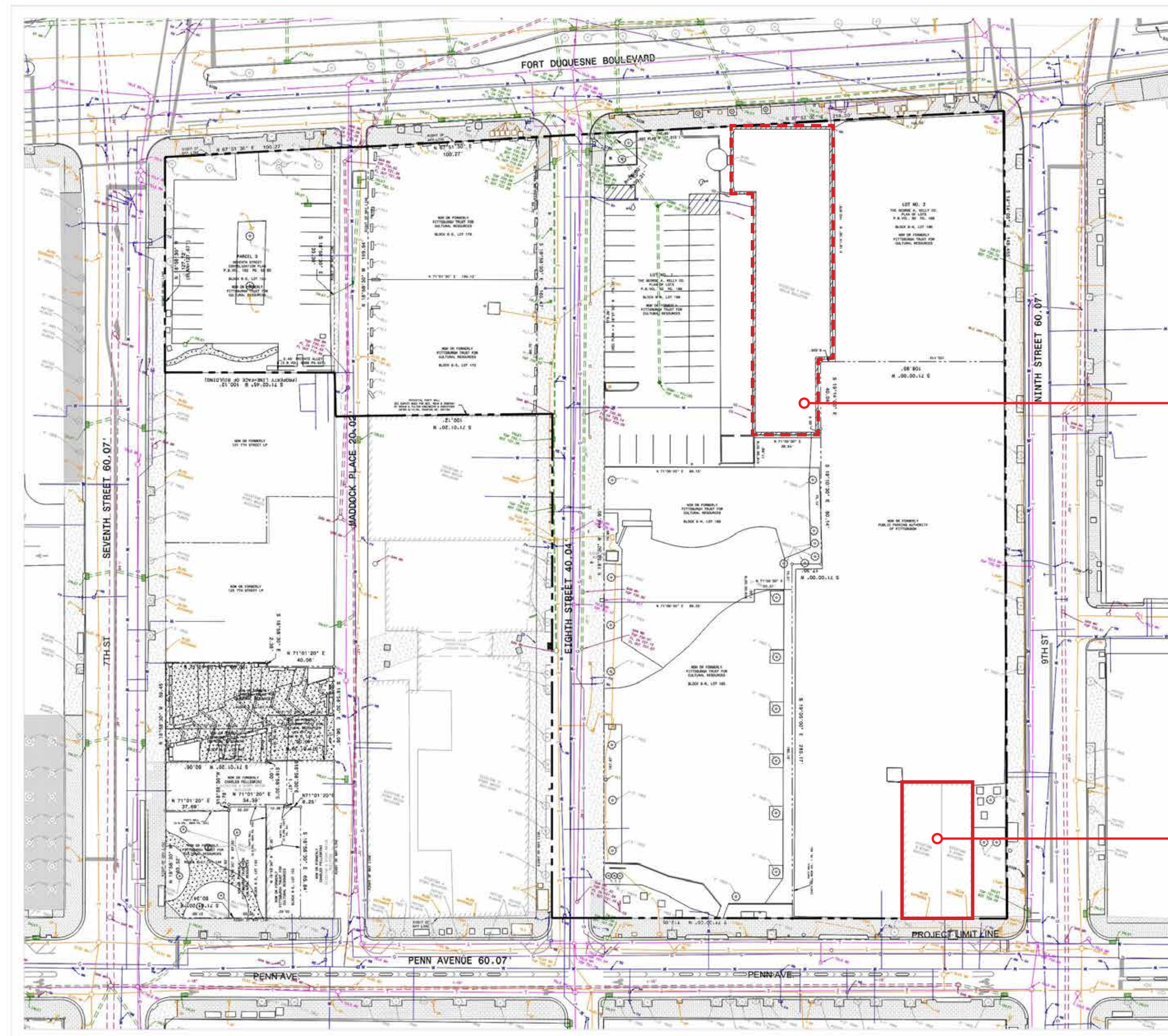












----- PROJECT BOUNDARY

Existing Goodyear to be demolished

Existing 819 & 821 Penn Ave Buildings to remain (Shown for reference, to be permitted / approved under separate cover)





Existing

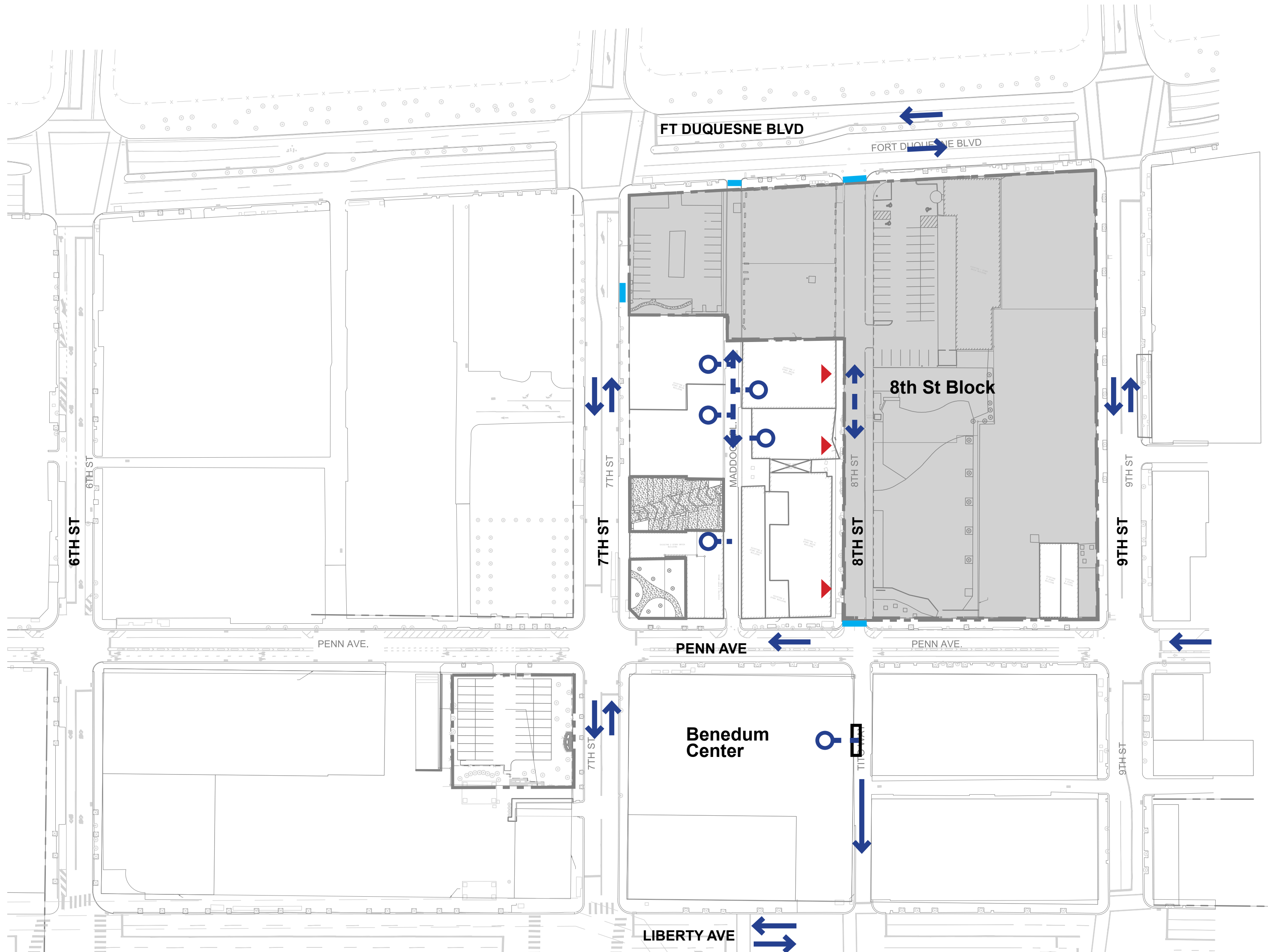


Proposed

**LEGEND**

- PROPERTY LIMIT LINE
- IMPERVIOUS SURFACE
- PERVIOUS SURFACE

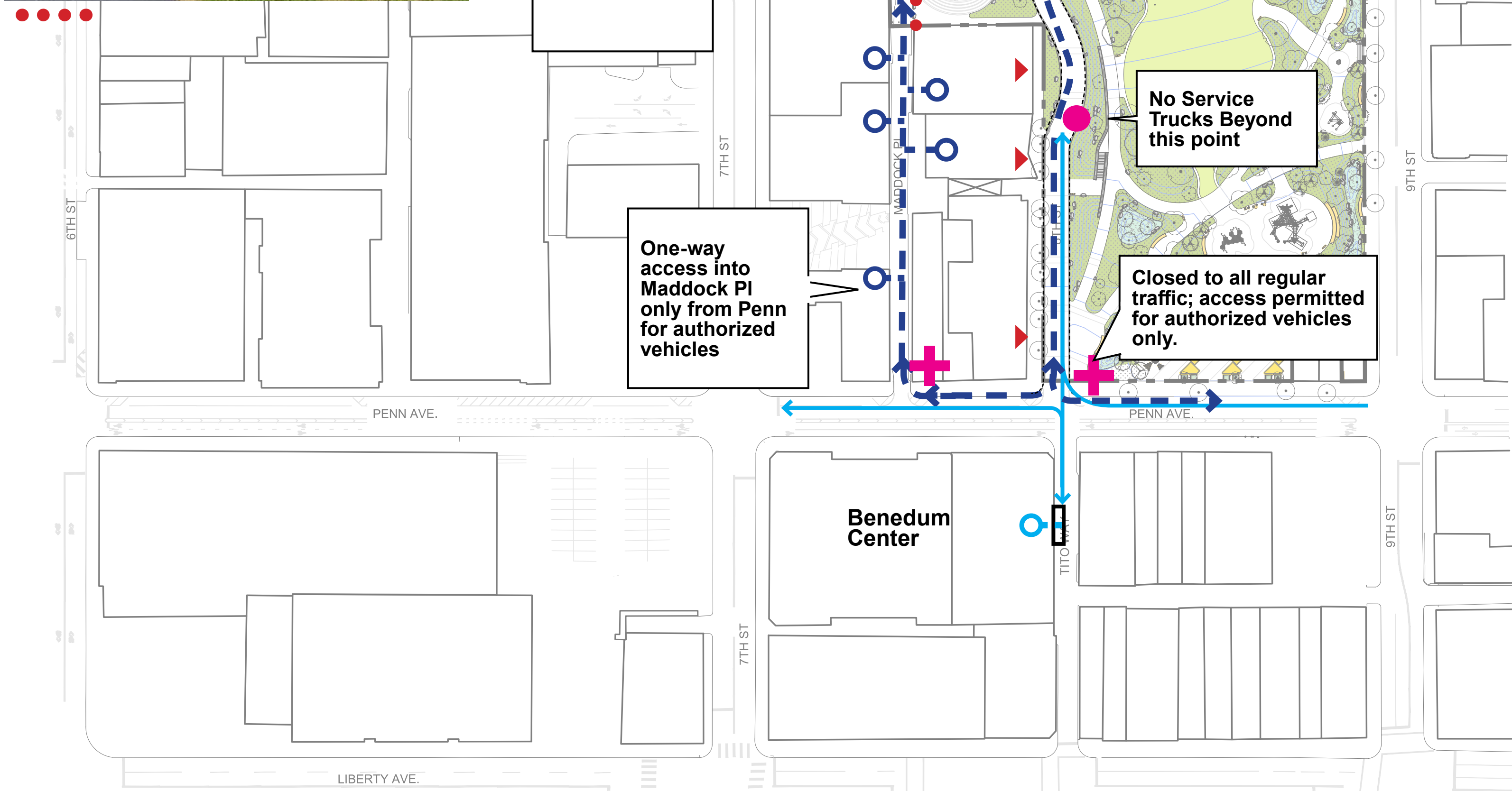




## LEGEND

- Project Boundary
- ➡ Vehicular Route
- ↔ Non Designated Direction (assume 2way)
- Service Dock
- ▶ Building Entrance
- Existing curb cut / sloped sidewalk





### LEGEND

- Project Boundary
- Benedum Loading and access. These vehicles have access from only Penn
- ↔ Permitted/ authorized vehicles access (EMS and Fire Department). These vehicles have access from both Penn and Duquesne.
- ▶ Building Entrance
- Service Dock / Entrance
- +● Proposed Signage
- ☀ Movable Bollards
- Boulders to Designate Vehicular Route







# **DESIGN ELEMENTS:**

- MATERIAL PALETTE**
- PLANTING DESIGN**
- FURNISHING ELEMENTS**
- LIGHTING DESIGN**
- STORM-WATER MANAGEMENT**





fieldoperations



Materials





Garden walk



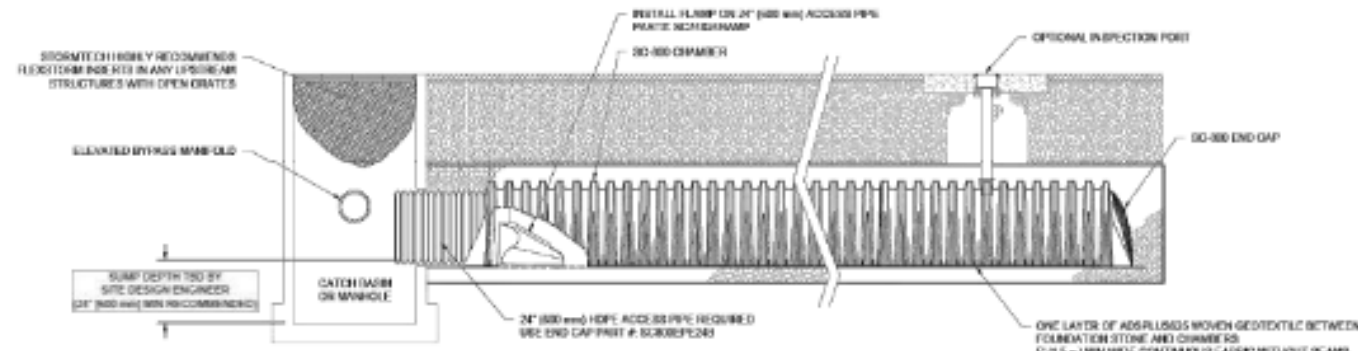
Woodland Walk w. Stormwater Gardens



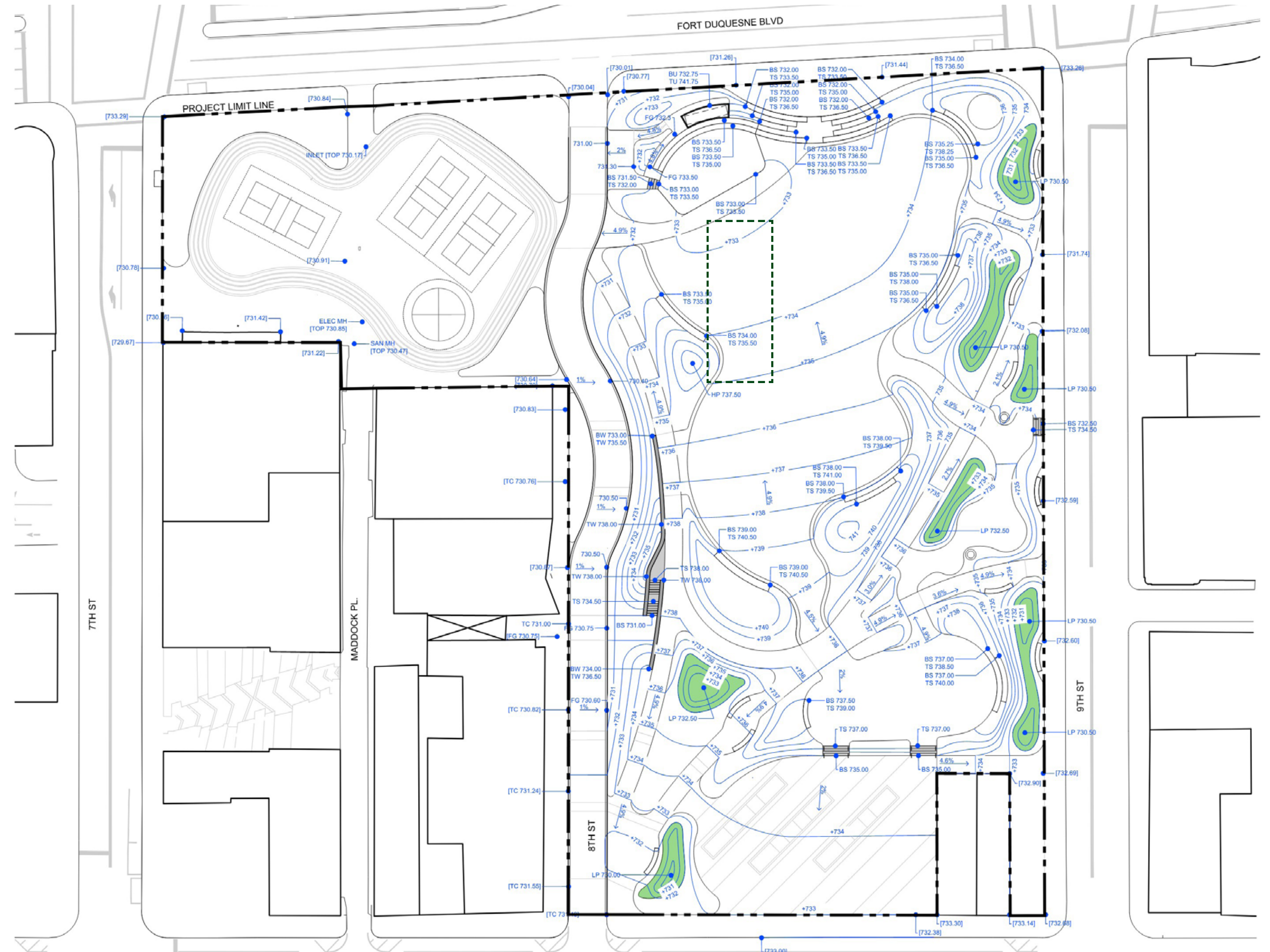




 Storm-water Gardens



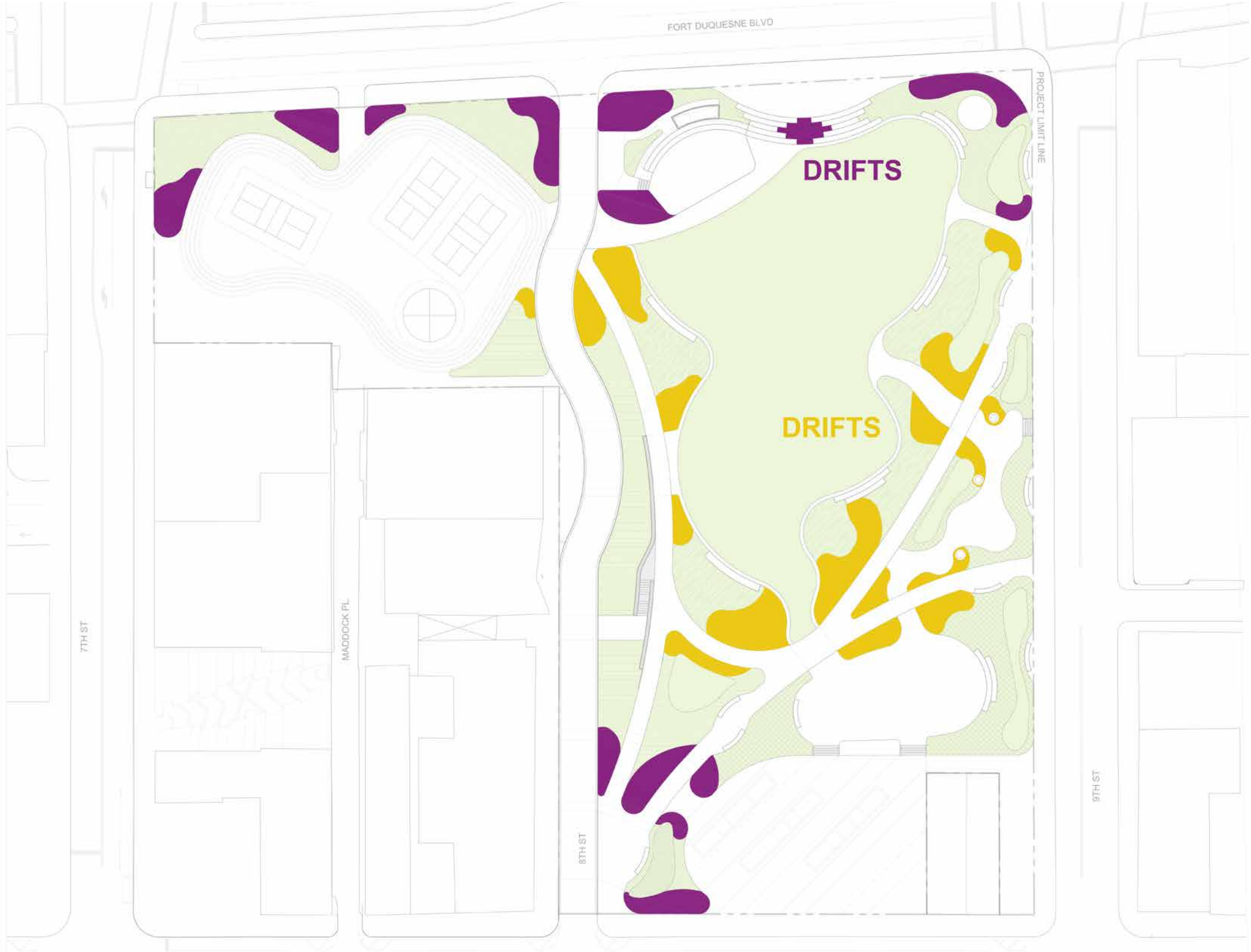
## Underground Storm Chambers







fieldoperations



Color Drifts

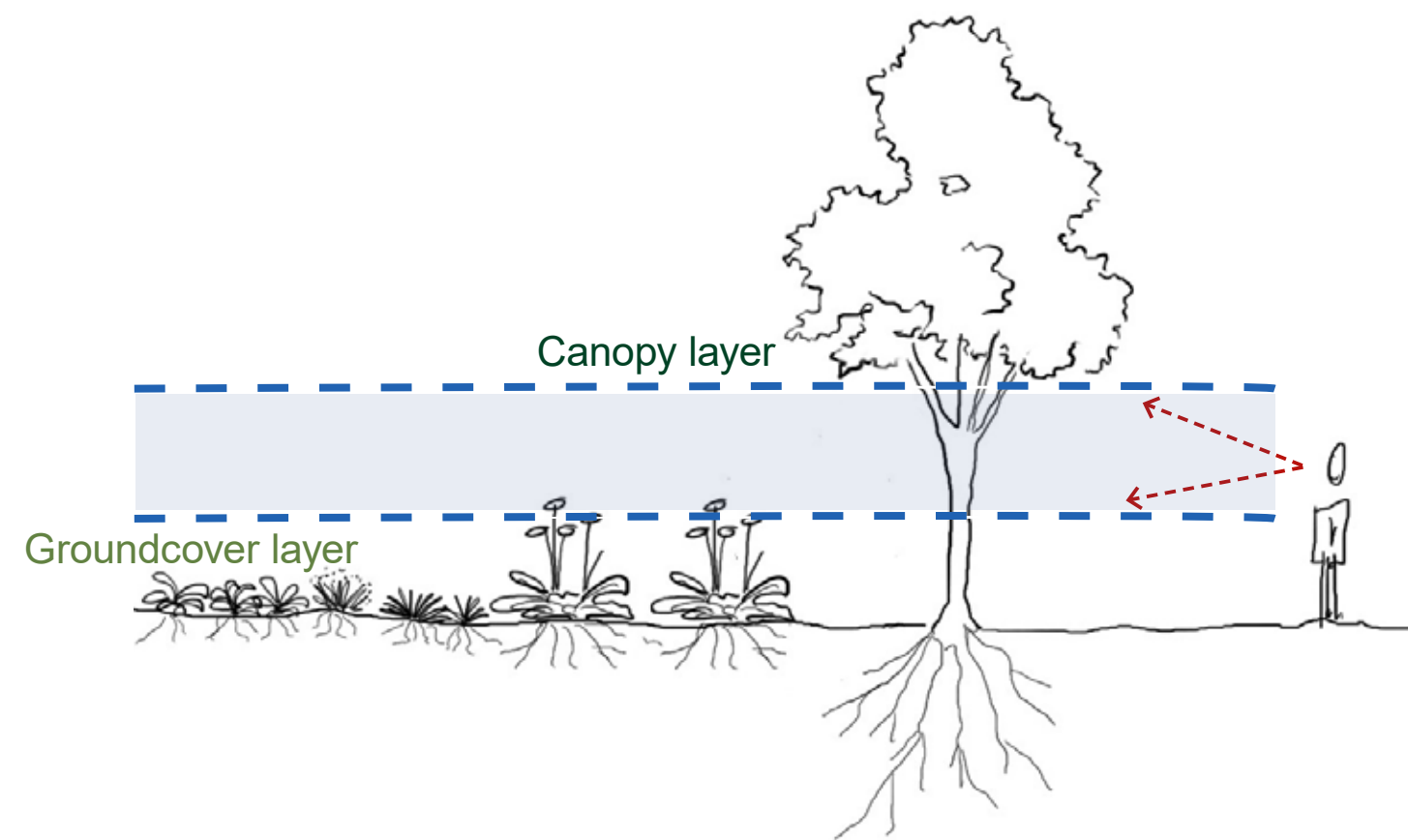




Urban Woodlands and Edge Habitats



Meadows and Grasslands

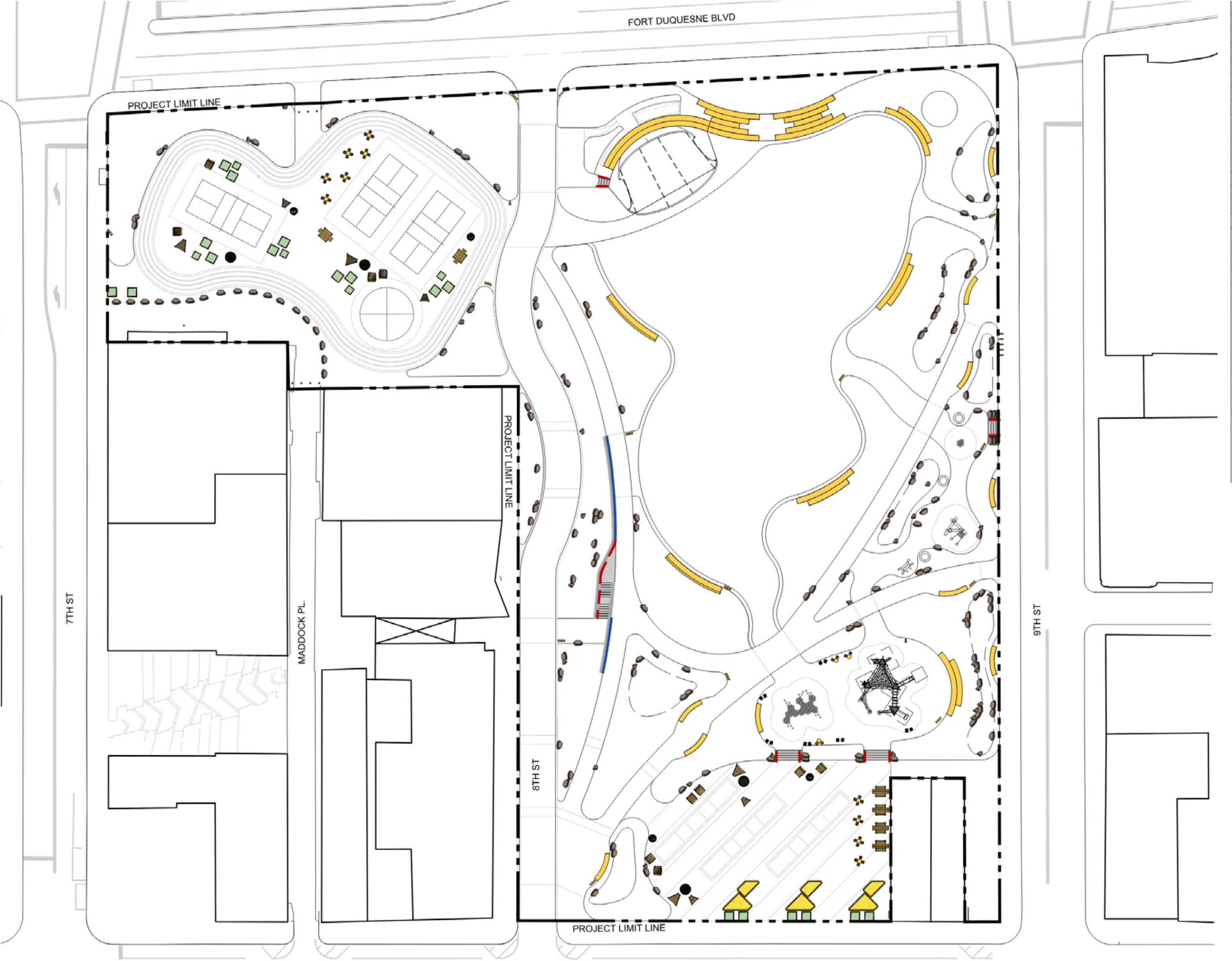


fieldoperations



Trees









## Pole Light



## Moon Light



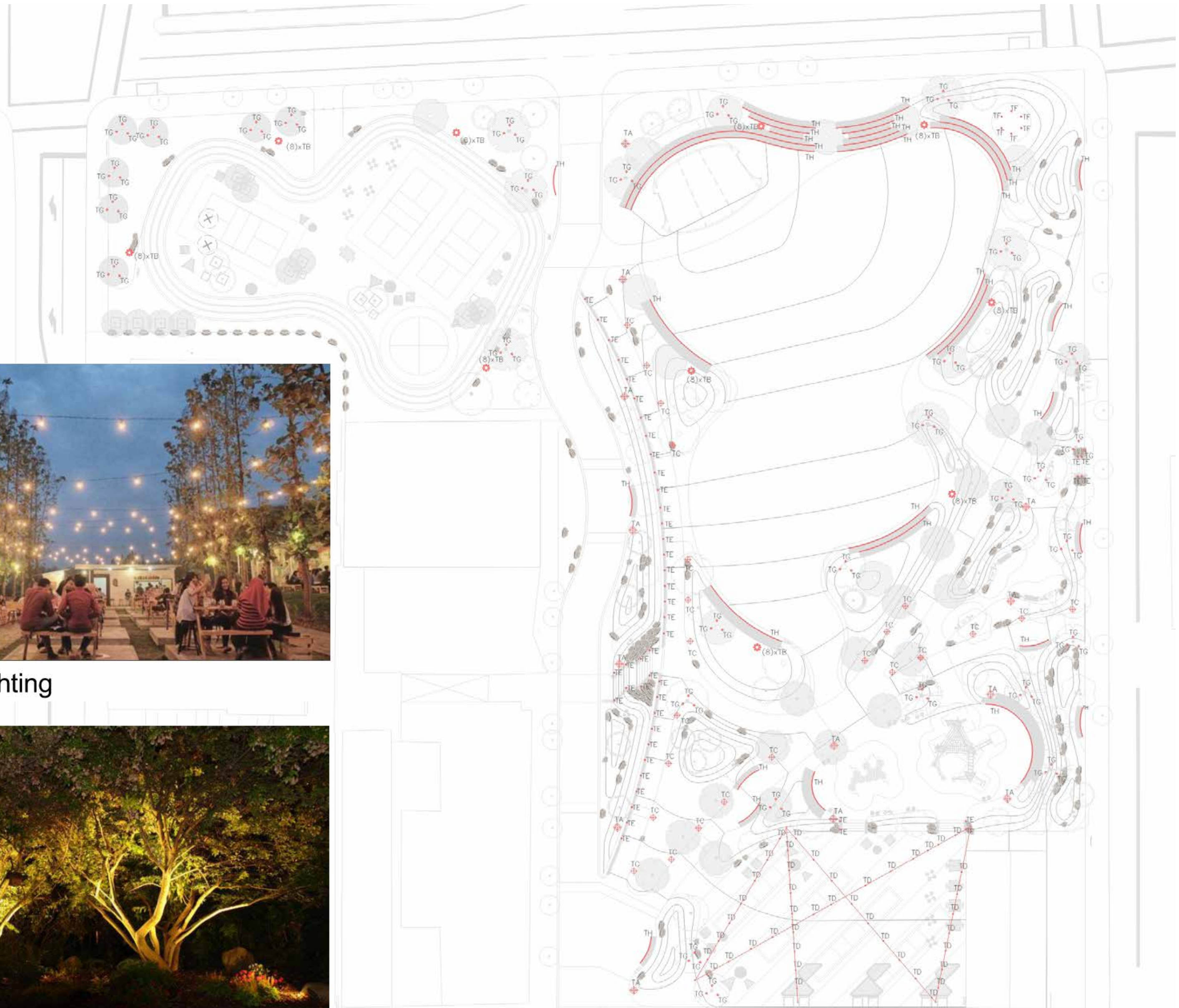
## Catenary Lighting



## Bollard/Garden Light



## Tree Uplight



## Lighting





Pole Light



Moon Light



Bollard/Garden Light



Tree Uplight



Integrated LED Lighting w/ Furnishing, Handrails, Etc.



Special Lighting Integrated w/ Customized Features



Catenary Lighting



Uplight for Art / Sculptures











































# VIDEO





THANK YOU