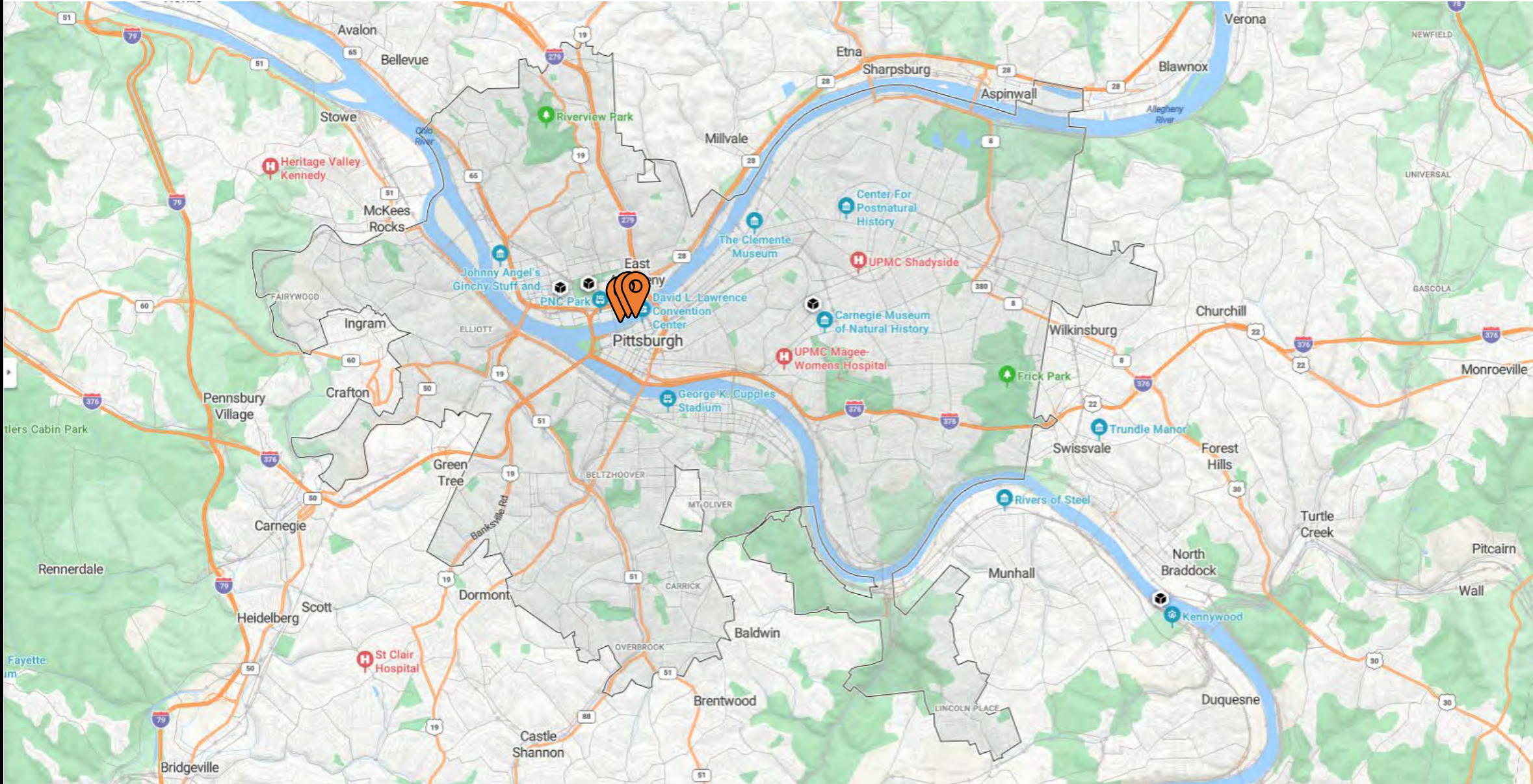
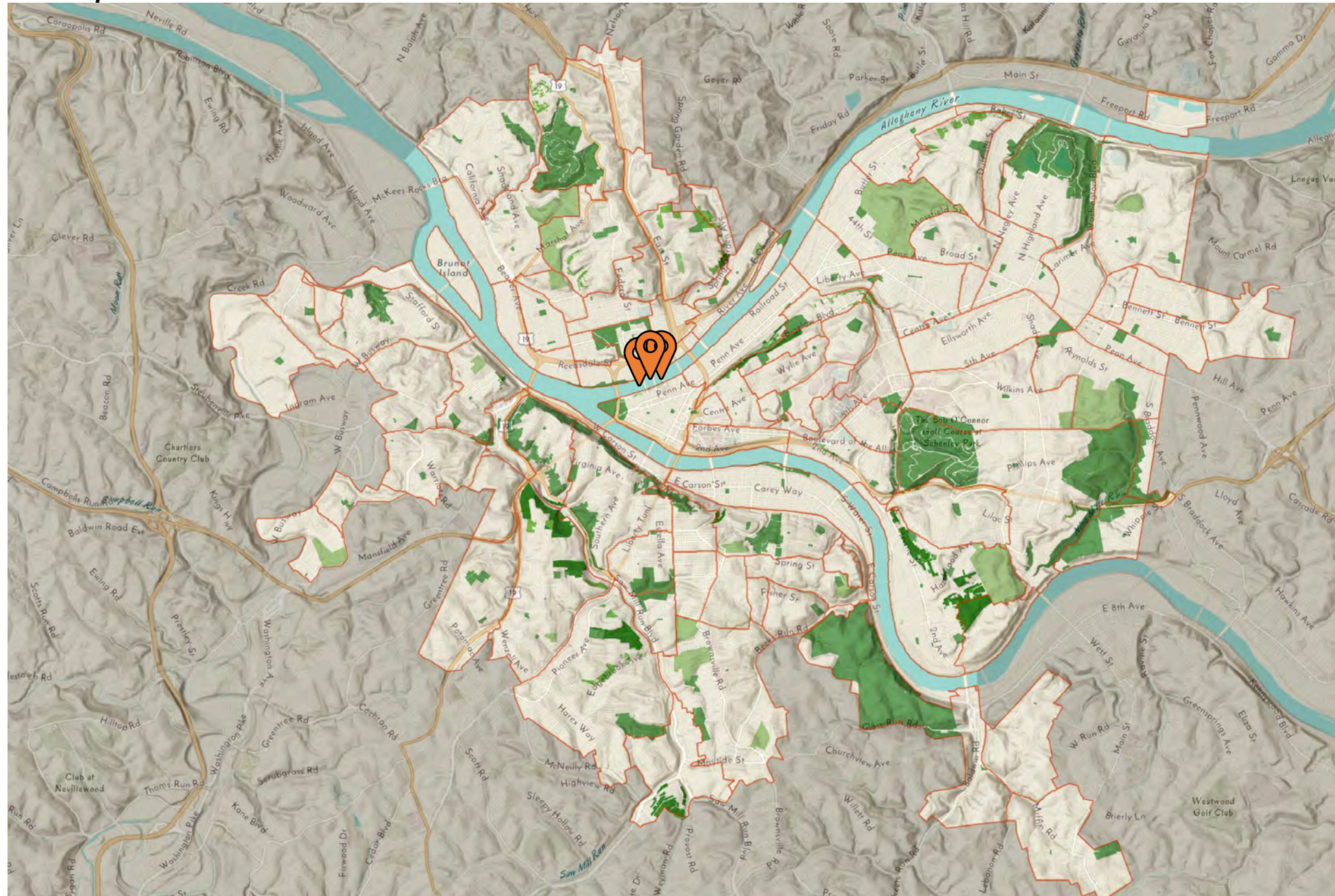


*Three Sisters Bridges
Historic Landmark Nominations
Planning Commission Presentation*

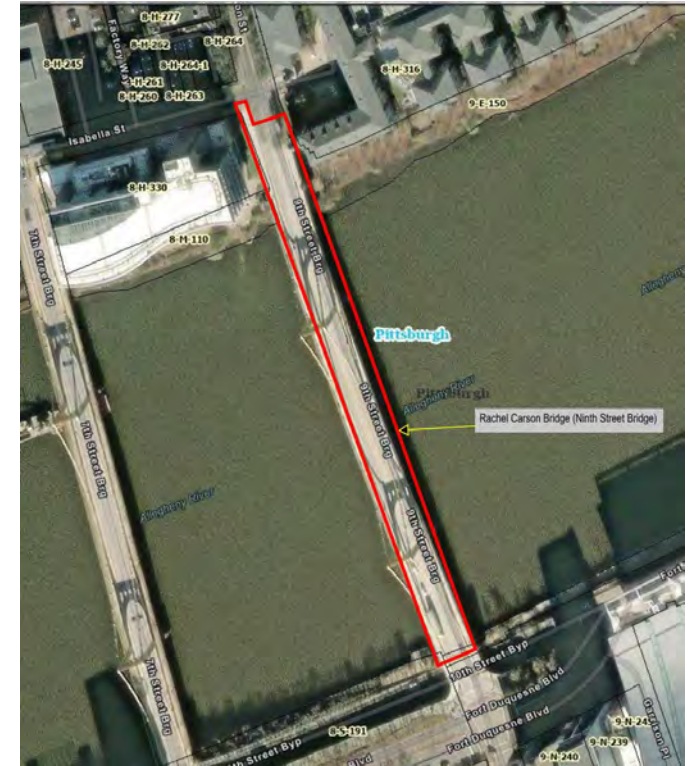
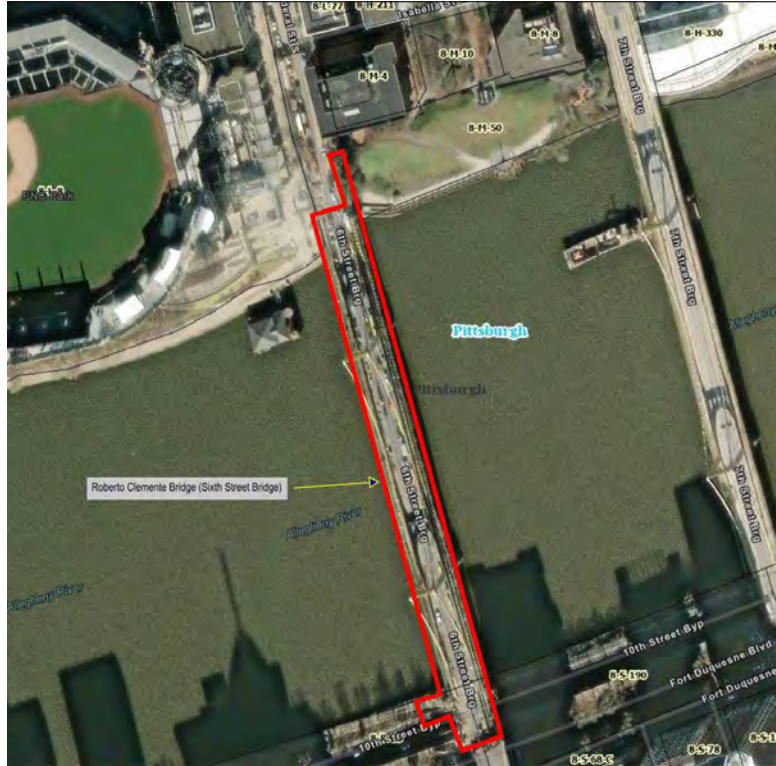
Location Map



Neighborhood Map



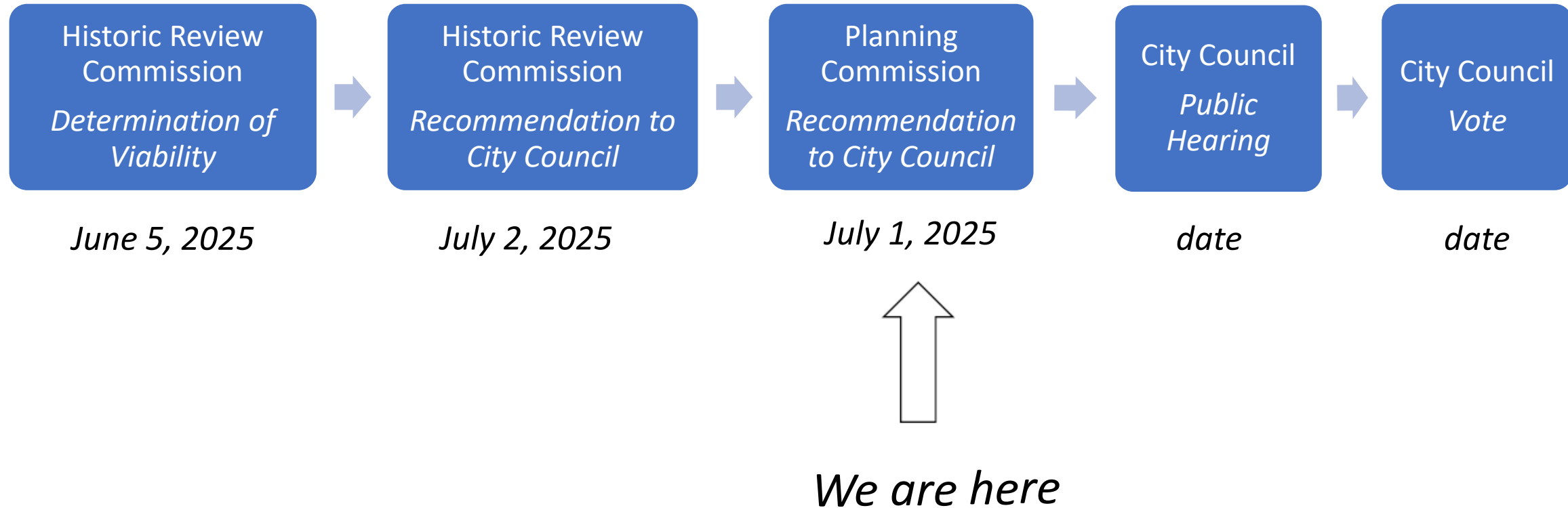
Site Plan






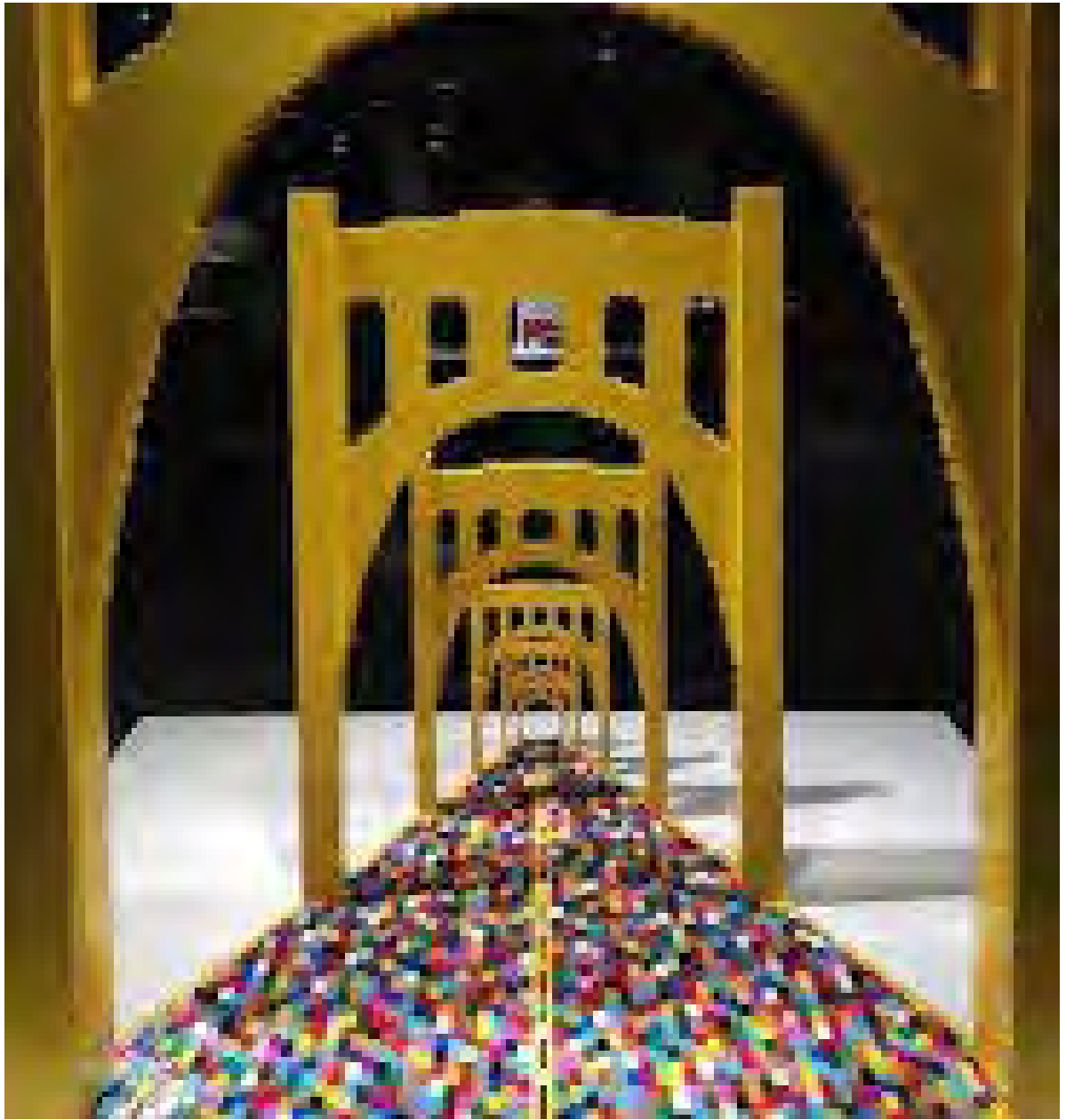
Roberto Clemente Bridge.

Where we are in the process





Title 11 Section 1101.03 (g) - The City Planning Commission shall consider effects of designation on adjoining properties and surrounding neighborhoods within the framework of established planning, development, and land use objectives for the City of Pittsburgh



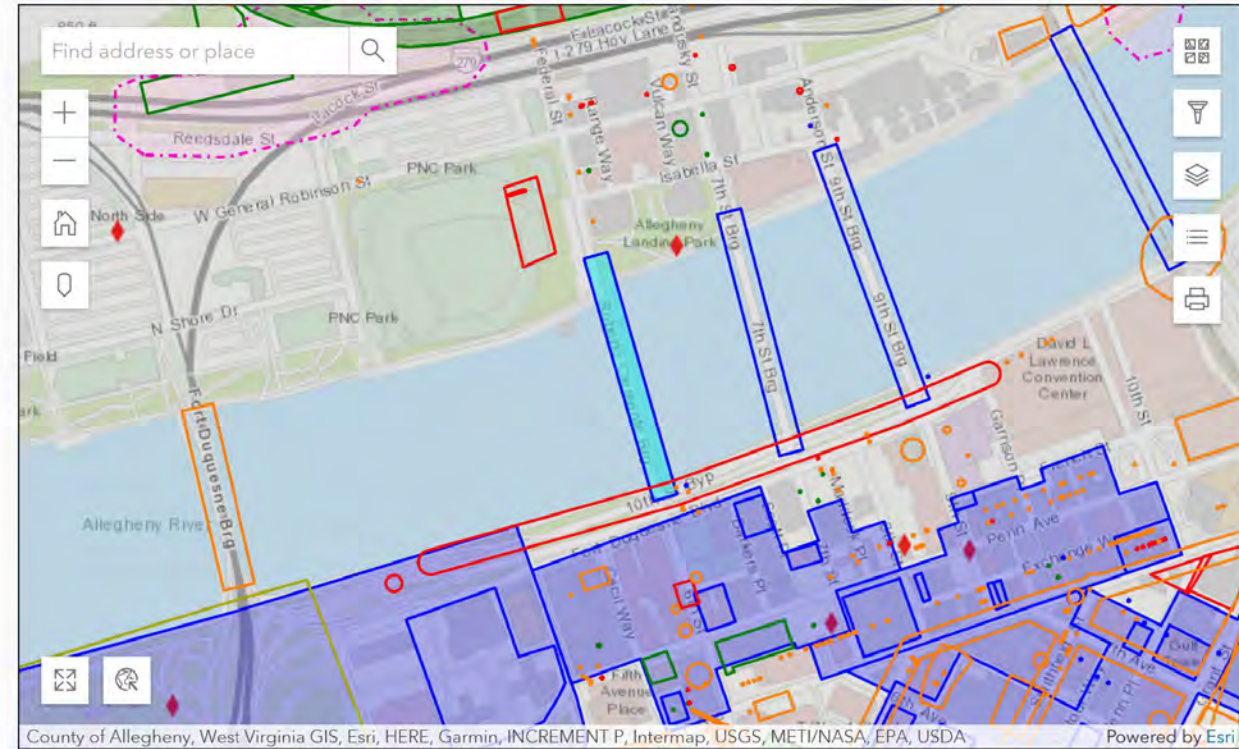
RESOURCE

Sixth Street Bridge

1985RE00526: Listed
Above Ground - Bridge



Resource Overview



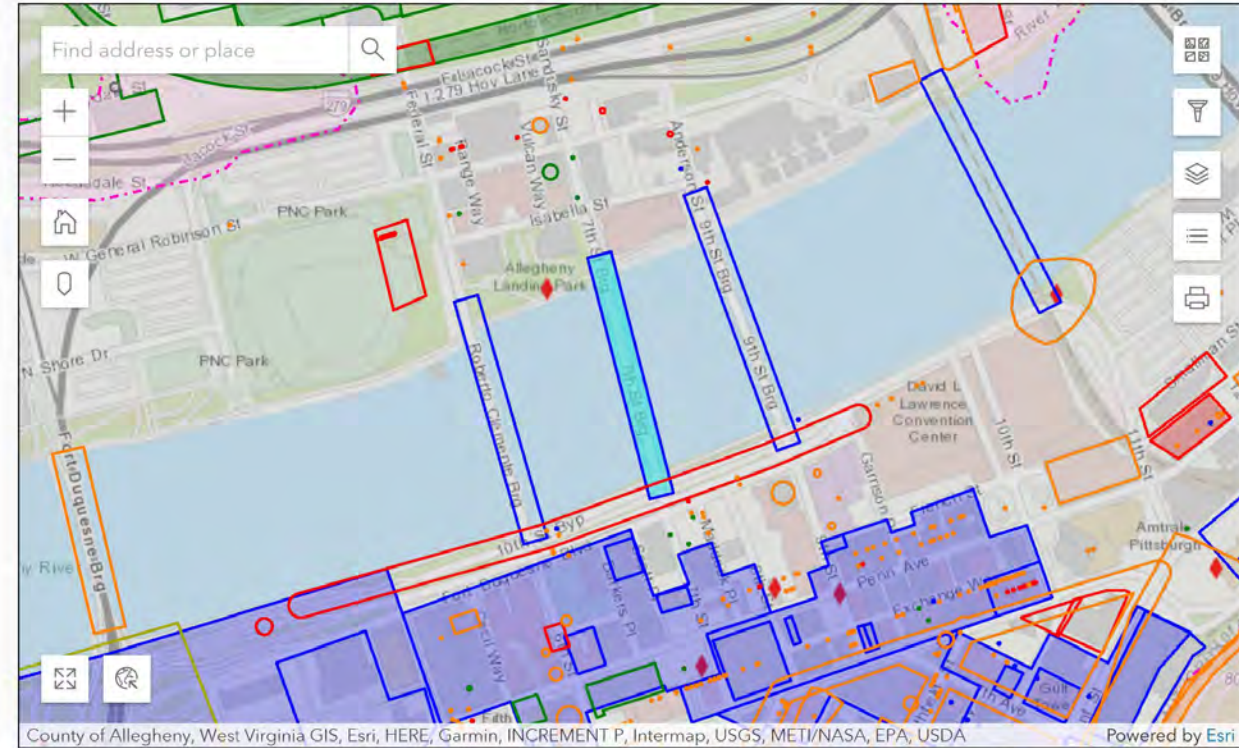
Resource Information

6th Street Listed on the National Register of Historic Places - 1985

RESOURCE

Seventh Street Bridge

1985RE00339: Listed
Above Ground - Bridge



Resource Overview

Resource Number	Resource Classification	Resource Description	Master Eligibility
-----------------	-------------------------	----------------------	--------------------

Resource Information

Resource Names

7th Street Bridge Listed on the National Register of Historic Places - 1985

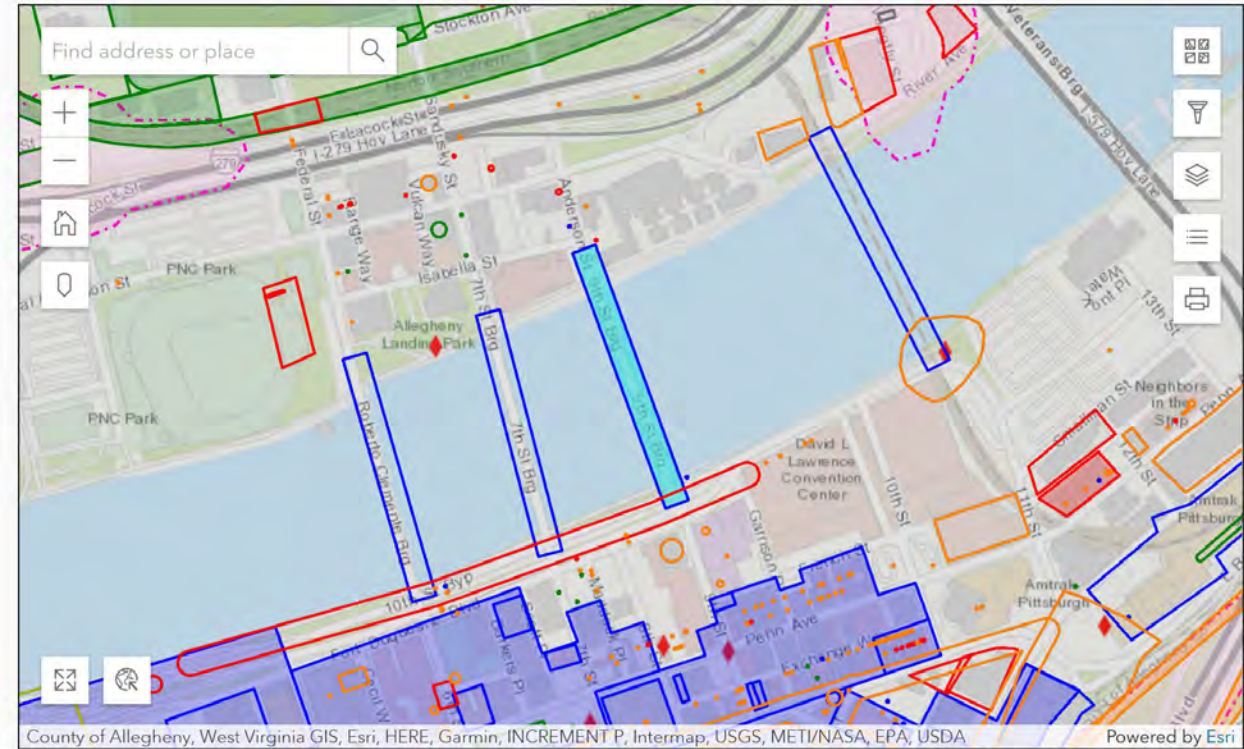
RESOURCE

Ninth Street Bridge

1985RE00729: Listed
Above Ground - Bridge

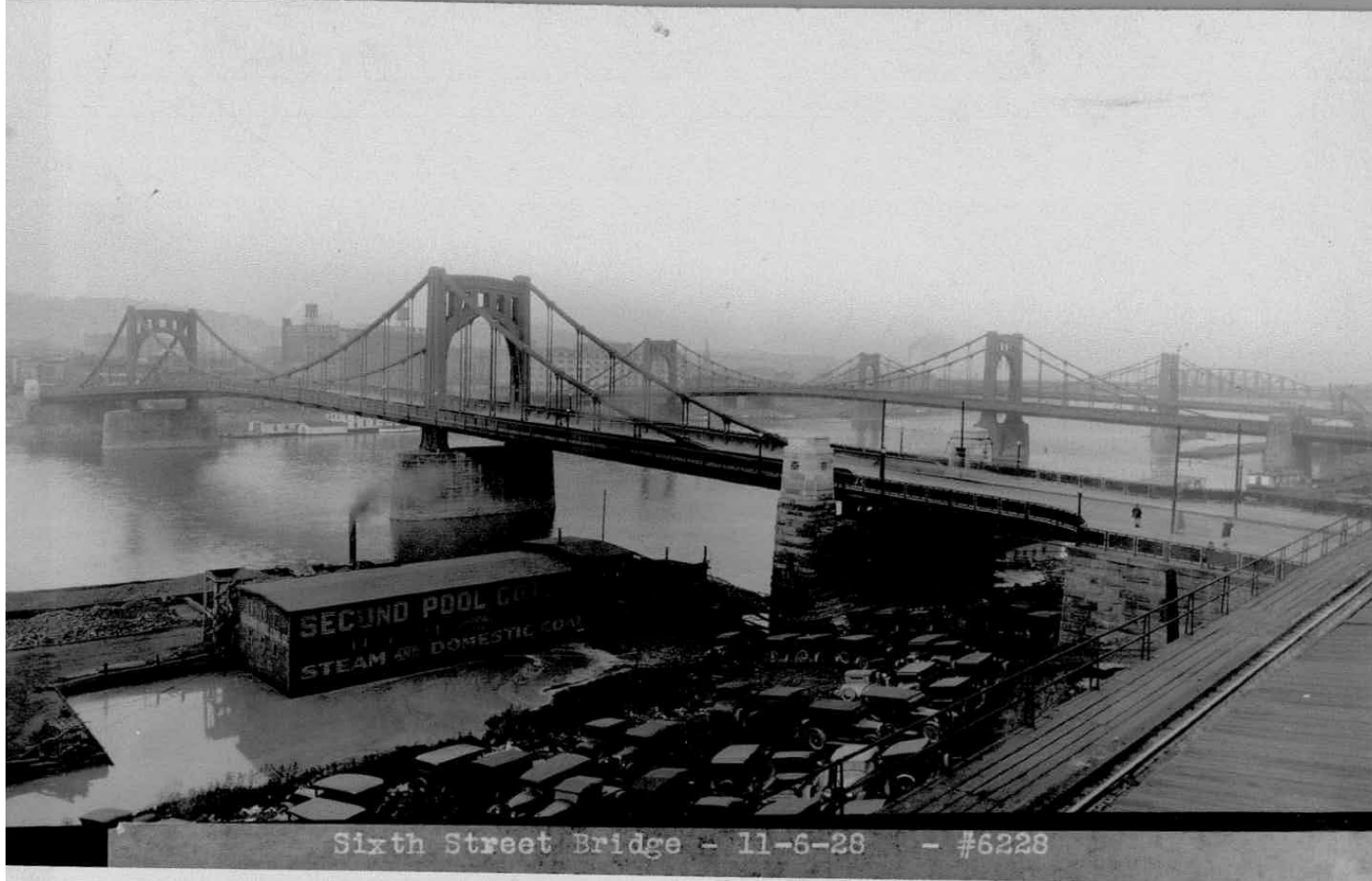


Resource Overview



Resource Information

9th Street Bridge Listed on the National Register of Historic Places - 1985



Sixth Street Bridge - 11-6-28 - #6228

