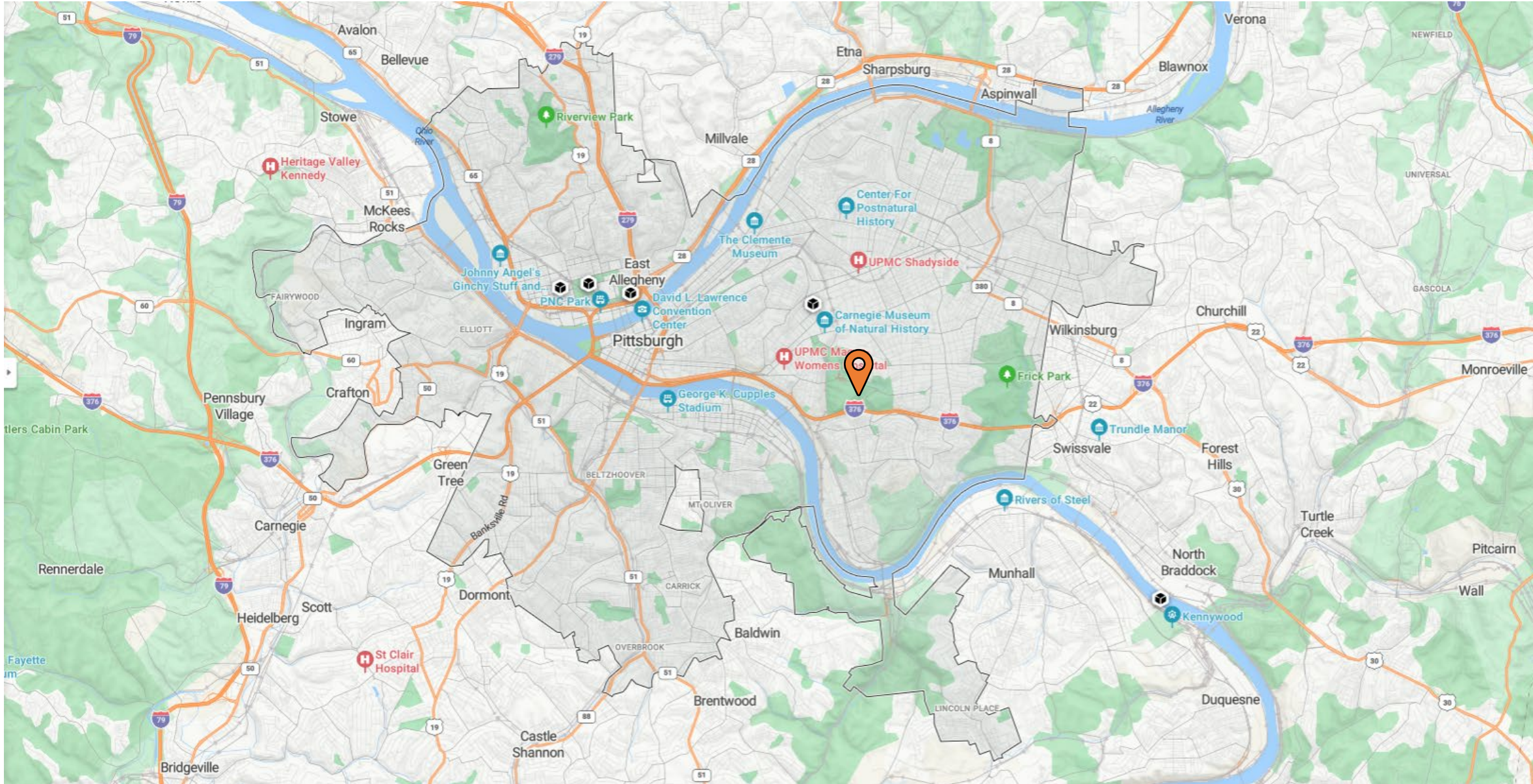




Schenley Park Historic Nomination Planning Commission Presentation

Location Map



Neighborhood Map

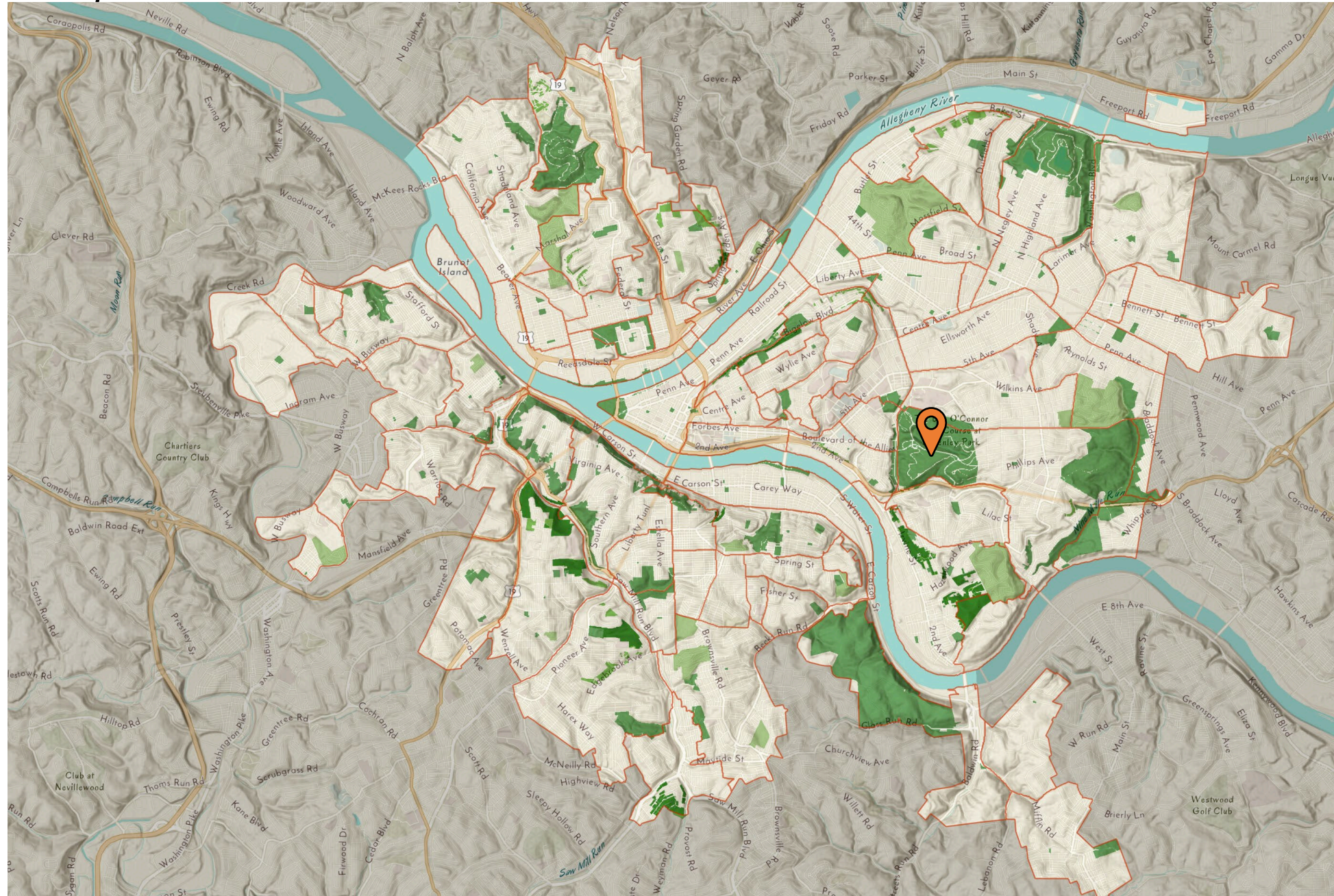


Image courtesy City of Pittsburgh GIS

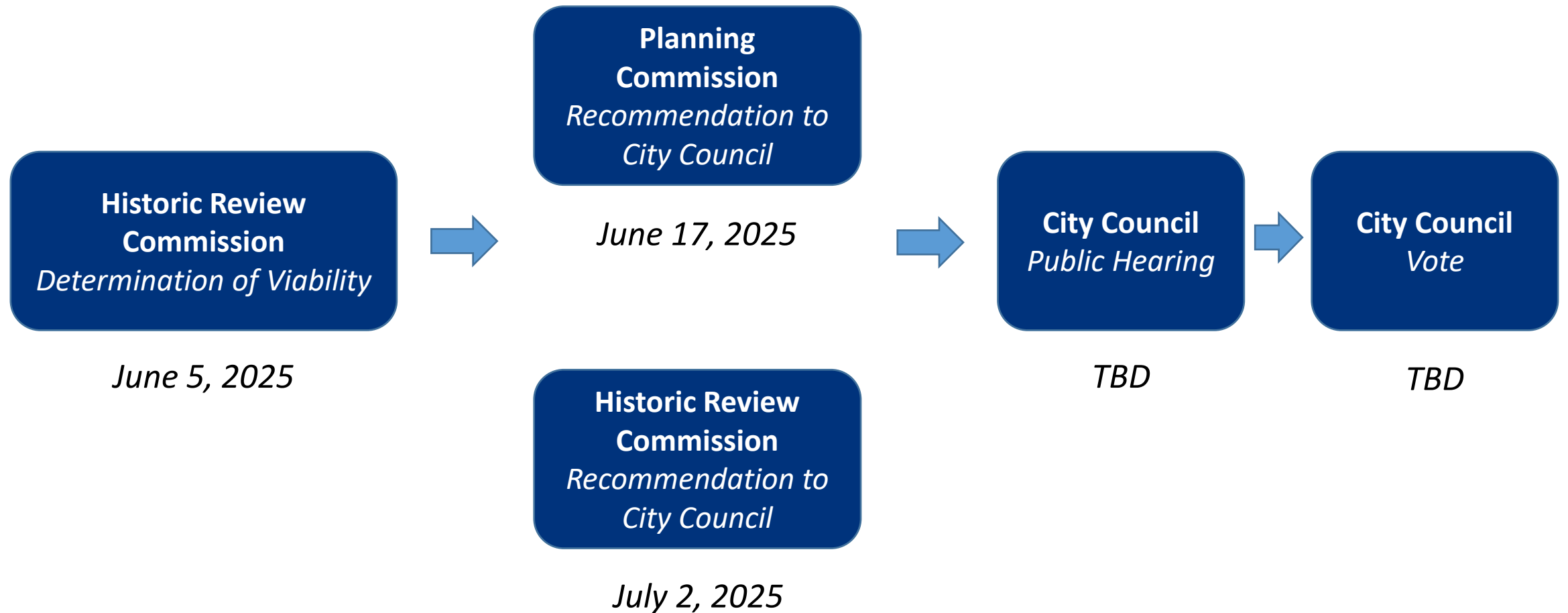
Site Plan





Schenley Park Bridle Trail.

Where we are in the process



Integrity worthy of preservation or restoration

Schenley Park retains a high degree of integrity of location, design, workmanship, and materials.

Schenley Park maintains a high degree of integrity. Its location remains the same as when the land was first donated by Mary Schenley and its elements of design, which were added over time, both convey the intended use and function as a park and maintain a high degree of integrity individually. The sheer size and scale of the park, as well as how many different man-made features exist within it, means that it is home to a wide variety of materials.

Building materials in the park also maintain a high degree of integrity and largely reflect those used in original construction. For example, Phipps Conservatory is a glass and steel structure with tufa lined walkways. The two historic tufa bridges in the park are made of reinforced concrete and faced with tufa, which remain. Schenley Park's ravines have a number of small arch bridges of various sizes constructed of large blocks of sandstone or are concrete arches faced with sandstone blocks. The Neill Log House and Martin Log Cabin are built of wood, chinking, and stone, reflecting their late 1700s construction heritage.



Title 11 – 1101.03(g)

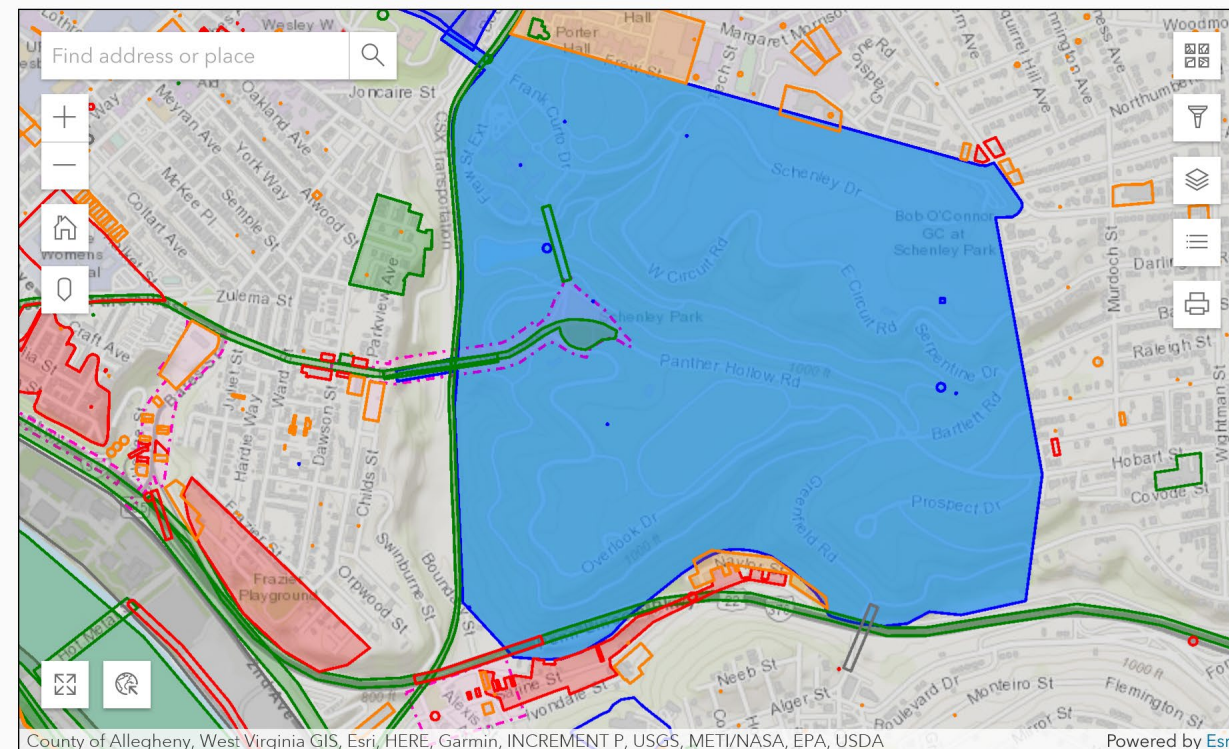
The City Planning Commission shall consider effects of designation on adjoining properties and surrounding neighborhoods within the framework of established planning, development and land use objectives for the City of Pittsburgh.



RESOURCE

Schenley Park

1985RE00090: Listed District



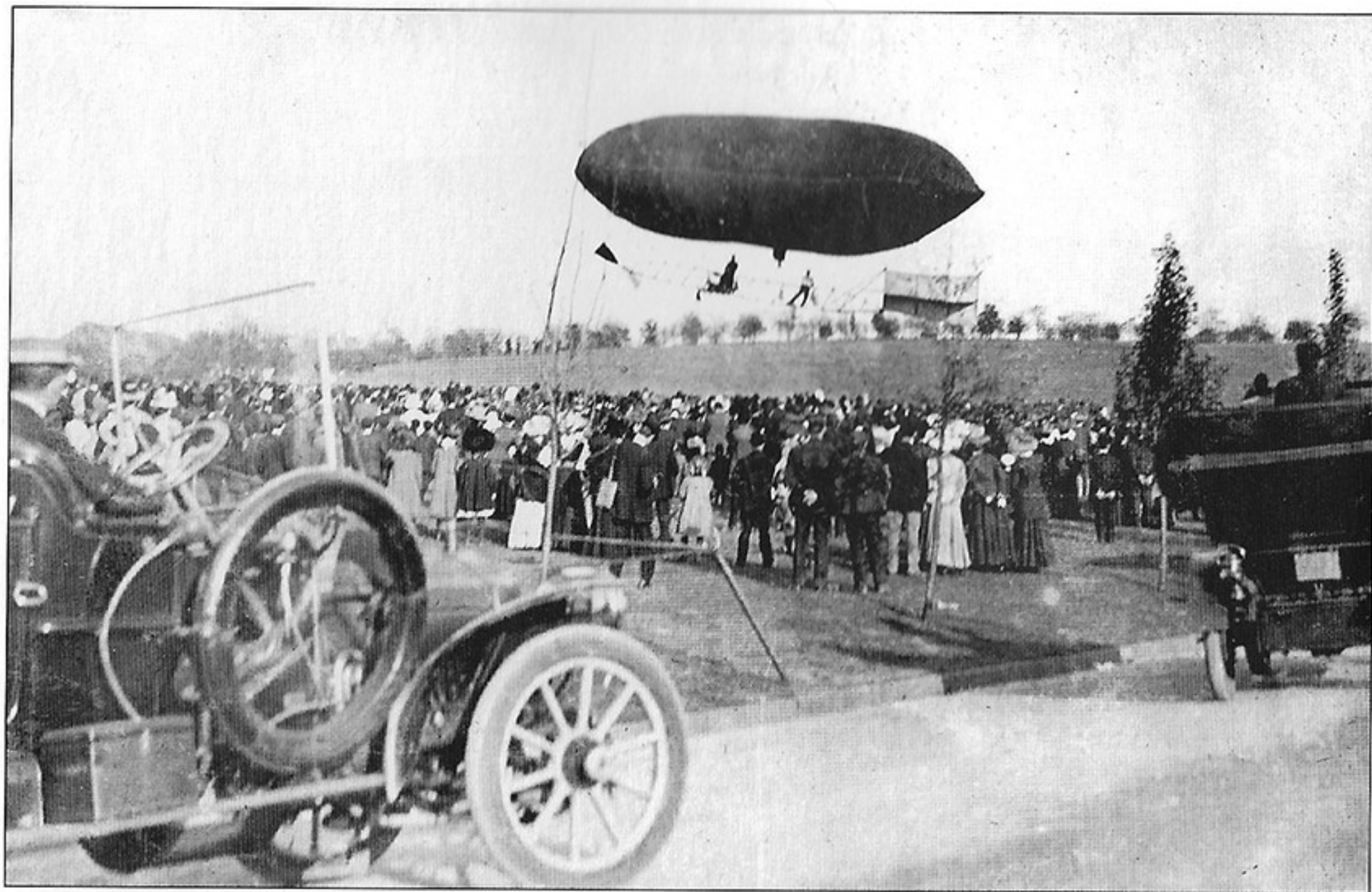
Resource Overview

Master Eligibility Individual Eligibility Owner Category Survey Date

Resource Information

Resource Names

Schenley Park Listed on the National Register in 1985



This air show was given in Schenley Park in 1908, probably in connection with the city's sesquicentennial. (Pittsburgh History & Landmarks Foundation.)