



Institutional Master Plan – 2019 Amendment

June 2019

Institutional Master Plan Text Amendment

Existing IMP

3. Scaife/Roberts Connector

DESCRIPTION	Infill connector between Scaife and Roberts
USES	Academic, research and/or office
SQUARE FEET	10,000 gsf
HEIGHT	2 stories (1 above grade)
SETBACK	North and South: adjacent buildings East: edge of Hamerschlag Dr West: west face of Scaife Hall

Proposed Amendment

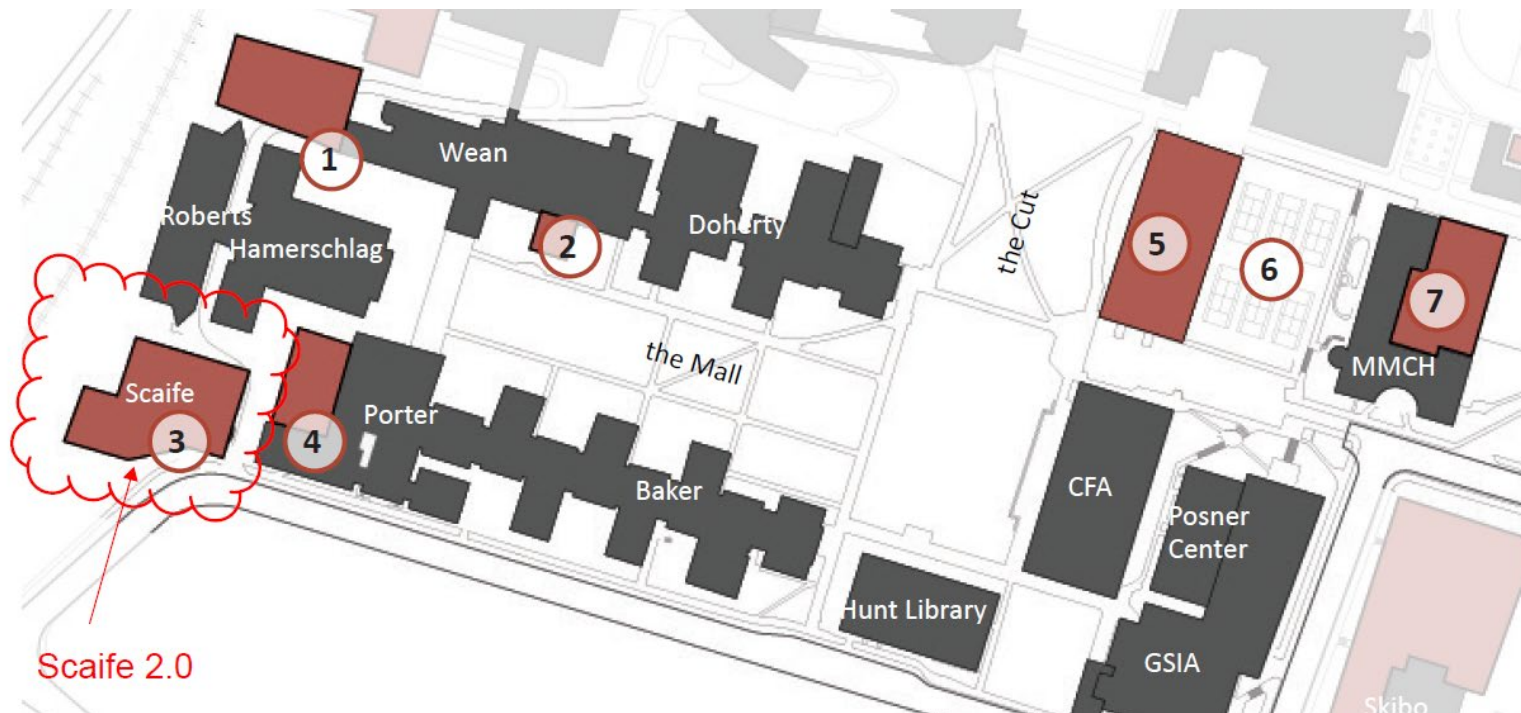
3. Scaife Replacement Engineering Building

DESCRIPTION	New building and underground parking - <i>Note: includes connections to Porter & Roberts Halls</i>
USES	Academic, research, labs, office, retail/restaraunt, structured parking
SQUARE FEET	120,000 gsf
HEIGHT	5 stories (with 4 story mass to match Scott Hall); may also extend 2 stories below grade
SETBACK	North: 40 ft from Hamerschlag Hall South and East: 15 ft from property line and/or fire lane West: north mass to match Scott Hall; south mass may extend up to 50 feet beyond

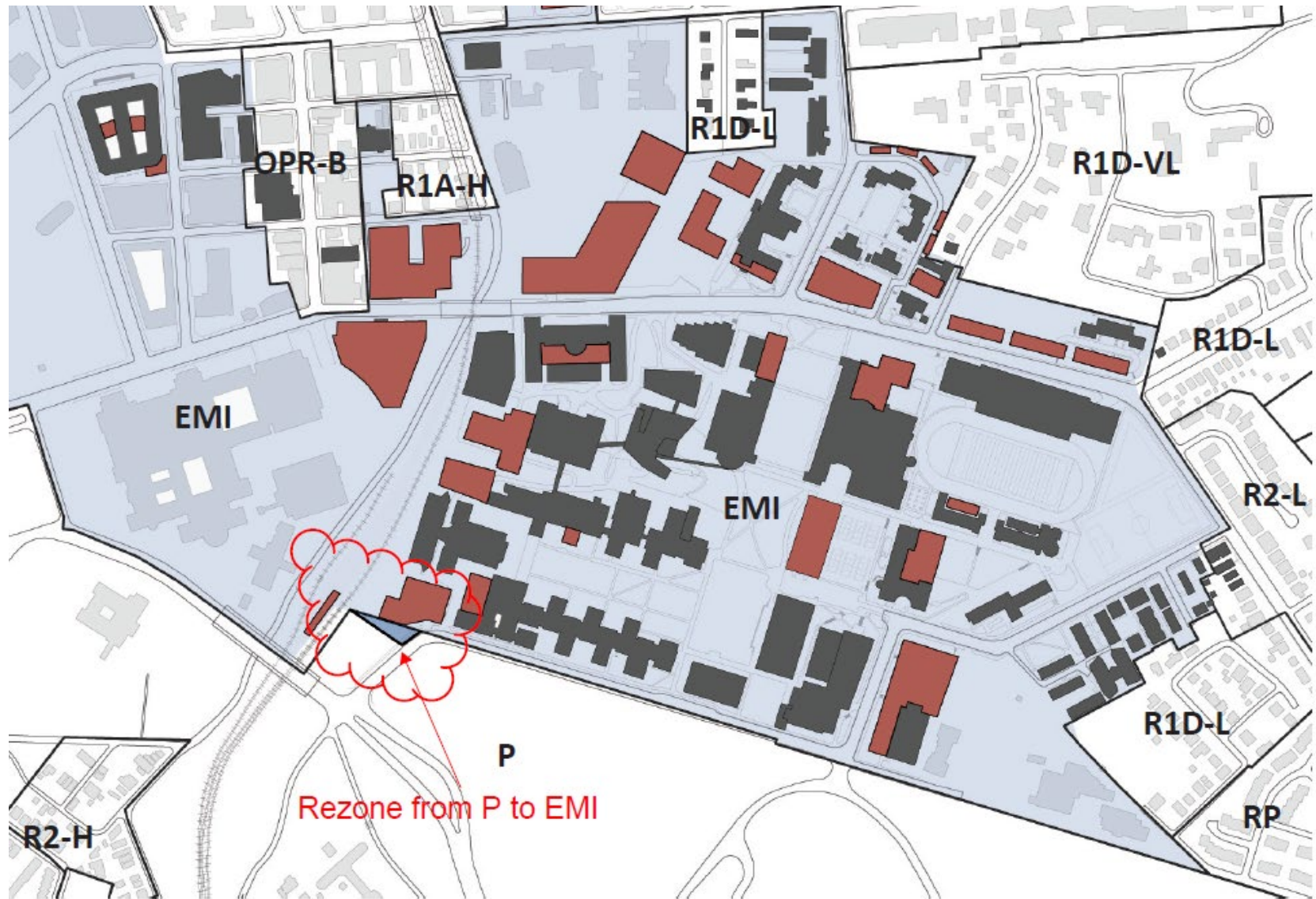
Institutional Master Plan Text Amendment

3. Scaife Replacement Engineering Building

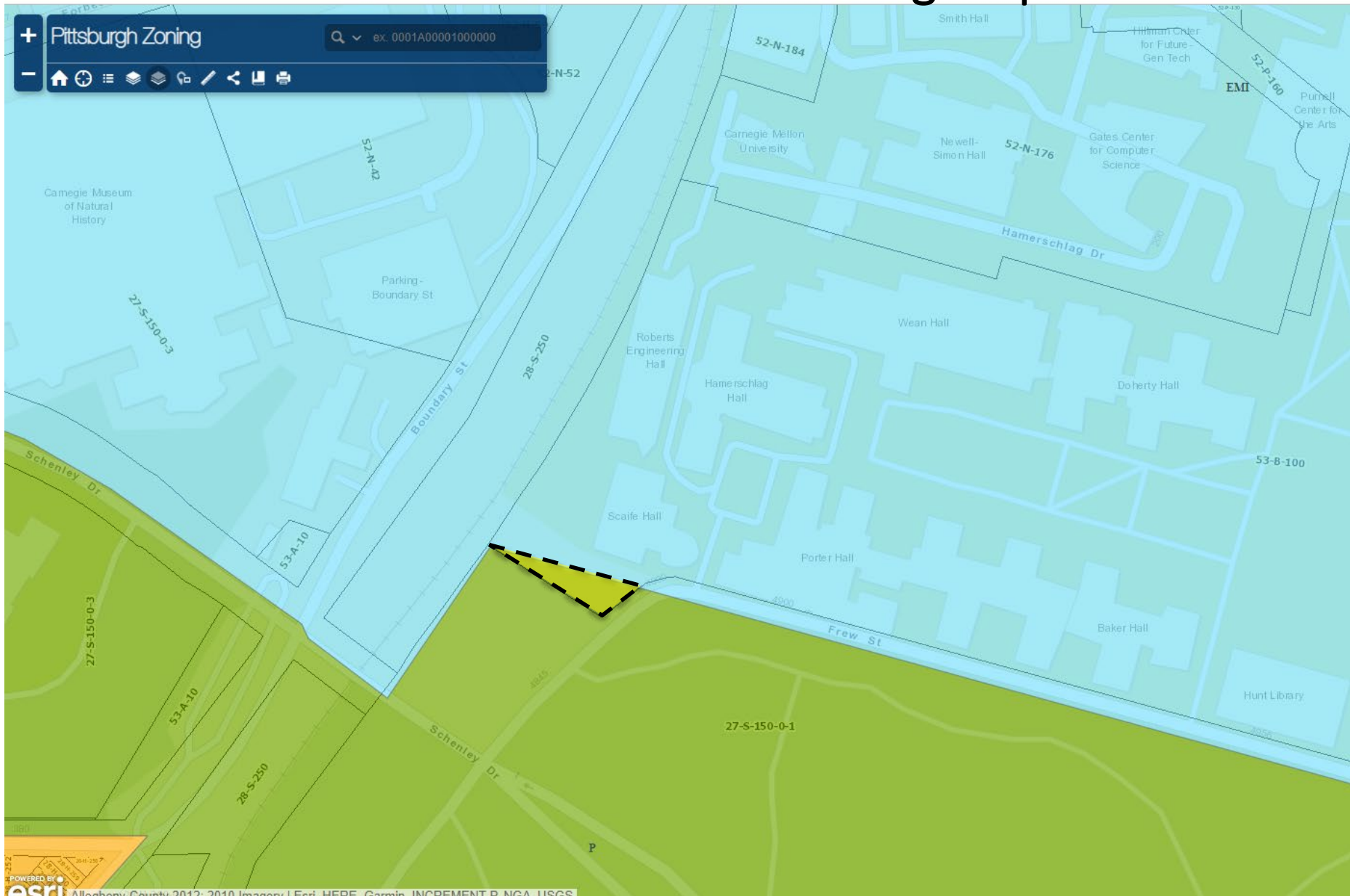
DESCRIPTION	New building and underground parking - <i>Note: includes connections to Porter & Roberts Halls</i>
USES	Academic, research, labs, office, retail/restaraunt, structured parking
SQUARE FEET	120,000 gsf
HEIGHT	5 stories (with 4 story mass to match Scott Hall); may also extend 2 stories below grade
SETBACK	North: 40 ft from Hamerschlag Hall South and East: 15 ft from property line and/or fire lane West: north mass to match Scott Hall; south mass may extend up to 50 feet beyond



Zoning Map Amendment



Zoning Map Amendment



Zoning Map Amendment



Zoning Map Amendment

